



Development Services

4/2013

Subject: DEVELOPMENT STATISTICS – February 2013

File Reference: DB10.2

The information below is provided for the month of February 2013 in the following areas:-

- New planning applications lodged
- Delegated planning approvals
- Council planning approvals
- Graph Showing Planning Lodgements & Approvals
- New operational works applications lodged
- Delegated Operational works approvals
- Graph Showing Operational Works Lodgements & Approvals
- Graph showing Building Searches completed for 2009-2012
- Graph showing Rate Searches completed 2010/2011/2012
- Graph showing New Dwelling Approval Comparison for 2009-2012
- Graph showing New Dwelling Approvals broken down into LG area.
- Graph showing Pool Safety Certificates Issued
- Graph showing Building & Plumbing Inspections conducted

PLANNING - NEW APPLICATIONS LODGED – February 2013

Application No.	Development	Location	Date Lodged
DA/792/2013	Telecommunications Facility (Major Impact)	Lot 59 SP 148532, South Trees Centenary Drive, BOYNE ISLAND QLD 4680	1/02/2013
DA/793/2013	Medical Centre	2041 Dawson Highway, CALLIOPE QLD 4680	5/02/2013
DA/794/2013	Boundary Realignment	4 Racecourse Road, CALLIOPE QLD 4680 10 Racecourse Road, CALLIOPE QLD 4680	5/02/2013
DA/796/2013	Multiple Unit Residential (12 Units) & Access Easement	38 Kent Street, WEST GLADSTONE QLD 4680 & 6-8 Flinders Street, WEST GLADSTONE QLD 4680	6/2/2013
DA/797/2013	Duplex	43 Mellefont Street, WEST GLADSTONE QLD 4680	8/2/2013
DA/798/2013	Preliminary Approval - Multiple unit Residential (26 Units) Development Permit - Small Lot Housing and Reconfiguration of a Lot (21 Lots)	Lot 37 RP 612326, Bradford Road, TELINA QLD 4680	8/2/2013

DA/799/2013	Duplex Unit	34 Blaxland Court, GLEN EDEN QLD 4680	13/2/2013
DA/800/2013	Preliminary Approval Overriding the Planning Scheme (Commercial Precinct), Material Change of Use - Impact - Service Station, Food Premises & Shop, Reconfiguration of a Lot (1 into 2) and ERA for Chemical Storage & Sewerage Treatment	45 Calliope River Road, RIVER RANCH QLD 4680	14/02/2013
DA/801/2013	Telecommunications Facility (Optus Tower)	Lot 49 SP 207327, Glenlyon Road, GLEN EDEN QLD 4680	20/02/2013
DA/802/2013	Residential Subdivision Vantage Estate -Stages 11, 12 & 13 & Reconfiguring a Lot (1 into 141)	Lot 504 SP 233801, Kirkwood Road, NEW AUCKLAND QLD 4680	20/02/2013
DA/803/2013	Dwelling House & Home Business	84 Glenlyon Street, GLADSTONE QLD 4680	20/02/2013
DA/804/2013	Extension to Vehicle and Machinery Sales & Hire yard	69 Lord Street, GLADSTONE QLD 4680 & 2 Crow Street, GLADSTONE QLD 4680	24/02/2013
DA/805/2013	Dwelling within 3m of the Secondary Road Frontage	85 Seaspray Drive, AGNES WATER QLD 4677	25/02/2013
DA/806/2013	(1 into 2) & Access Easement	89 Diamantina Drive, WURDONG HEIGHTS QLD 4680	25/02/2013
DA/807/2013	Reconfiguring a Lot (1 into 2)	Lot 950 SP 250627, Kirkwood Road, KIRKWOOD QLD 4680	26/02/2013
DA/808/2013	Boundary Realignment (Including Small Lot)	62 Beak Street, NEW AUCKLAND QLD 4680	27/02/2013

PLANNING - DELEGATED DECISIONS – February 2013

Application No.	Development	Location	Decision Date
DA/698/2012	Multiple Unit Residential (8 Units)	39 Stirrat Street, CALLIOPE QLD 4680	25/2/2013
DA/757/2012	Multiple Unit Residential (3 Units)	14 Roberts Street, SOUTH GLADSTONE QLD 4680	11/2/2013
DA/725/2012	Multiple Unit Residential (4 Units)	55 Muirhead Street, CALLIOPE QLD 4680	11/2/2013
DA/760/2012	Medical Centre	3 Captain Cook Drive AGNES WATER QLD 4677	5/2/2013
DA/697/2012	Showroom	35-37 Gladstone Benaraby Road, TOOLOOA QLD 4680	6/2/2013
DA/753/2012	Boundary Realignment (3 into 3), Access Easement and Services Easement	Lot 1 RP 614595, Boyne	22/2/2012

DA/727/2012	Reconfiguration of a Lot (1 into 2)	50 Trudy Avenue CALLIOPE QLD 4680	6/2/2013
DA/560/2012	(1 into 34)	9 Wuruma Court CLINTON QLD 4680	6/2/2013
DA/715/2012	Reconfiguration of a Lot (1 into 2)	26 Mylne Street, WEST GLADSTONE QLD 4860	20/2/2013
DA/621/2012	1 into 3	Lot 72 SP 200689, Auckland	20/2/2013
DA/656/2012	Awoonga Country Stage 3 (1 into 23 plus Balance Lot)	140 Awoonga Dam Road, Benaraby QLD 4680	1/2/2013

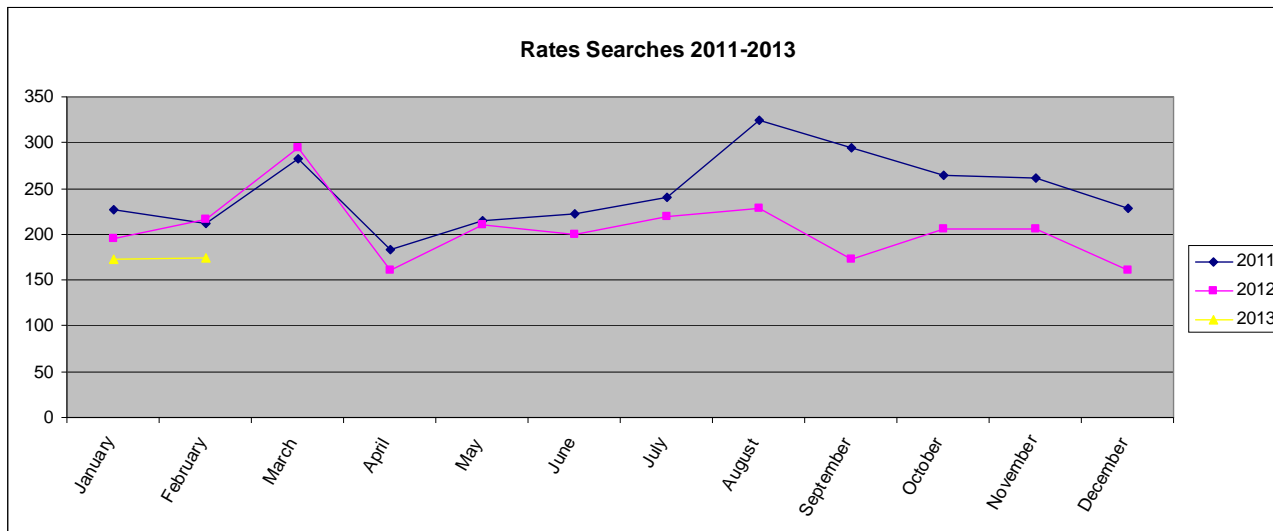
PLANNING – COUNCIL DECISIONS – February 2013

Application No.	Development	Location	Decision Date
DA/605/2012	Multiple Unit Residential (45 Units)	97 Auckland Street, GLADSTONE QLD 4680	5/02/2013
DA/602/2012	Educational Establishment (Industrial Training Facility)	17-19 South Trees Drive, SOUTH TREES QLD 4680	5/2/2013
DA/522/2012	Caravan and Relocatable Home Park (140 Sites)	75 Racecourse Road, CALLIOPE QLD 4680	5/2/2013
DA/713/2012	Multiple Unit Residential (9 Units)	13 Scenery Street, WEST GLADSTONE QLD 4680	5/2/2013
DA/572/2012	Small Lot Housing & Reconfiguring a Lot (1 into 2)	20 Boles Street, WEST GLADSTONE QLD 4680	19/02/2013
DA/662/2012	Industry (Low Impact)	8 Side Street, GLADSTONE QLD 4680	19/2/2012

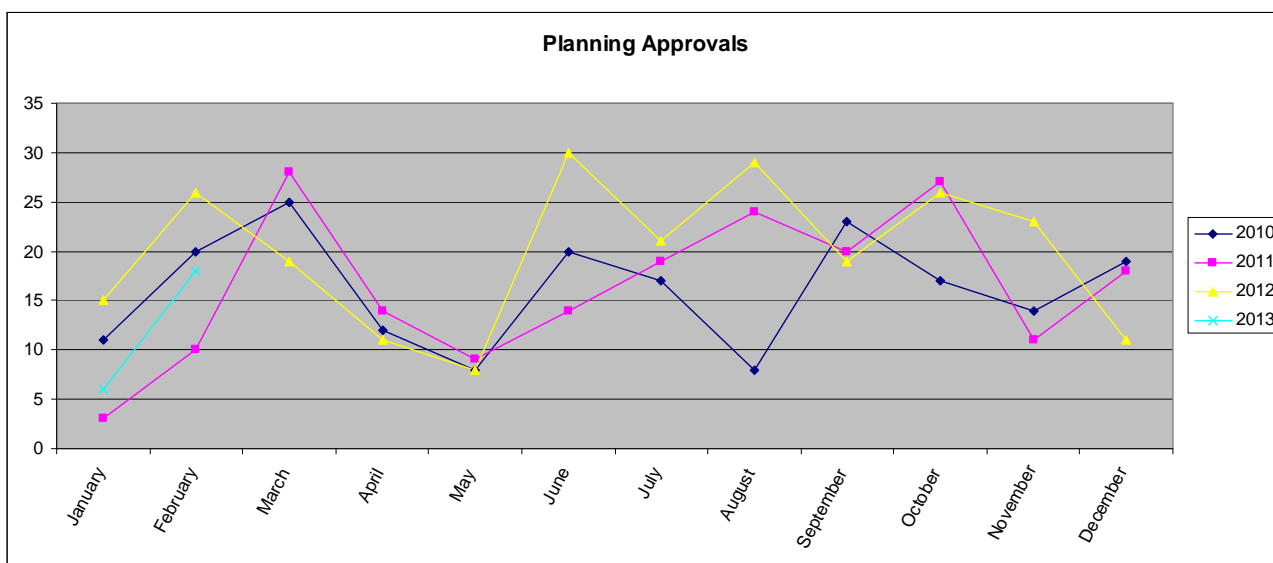
PLANNING – NEGOTIATED DECISIONS – February 2013

Application No.	Development	Location	Decision Date
DA/623/2012	Extension to Existing Aged Persons Accommodation (53 Units)	2 Marten Street SOUTH GLADSTONE QLD 4680	26/2/2013
DA/664/2012	Food Premises (3 Tenancies), Medical Centre (Physiotherapy), Indoor Entertainment (Gymnasium), Extension to Shopping Centre & Reconfiguration of a Lot (1 into 2 plus access easement)	550 Kirkwood Road KIRKWOOD QLD 4680	28/2/2013
DA/689/2012	Change in Zone from Rural to Park Residential & Reconfiguration of a Lot (1 into 2)	47 Dickinson Road NEW AUCKLAND QLD 4680	15/2/2013

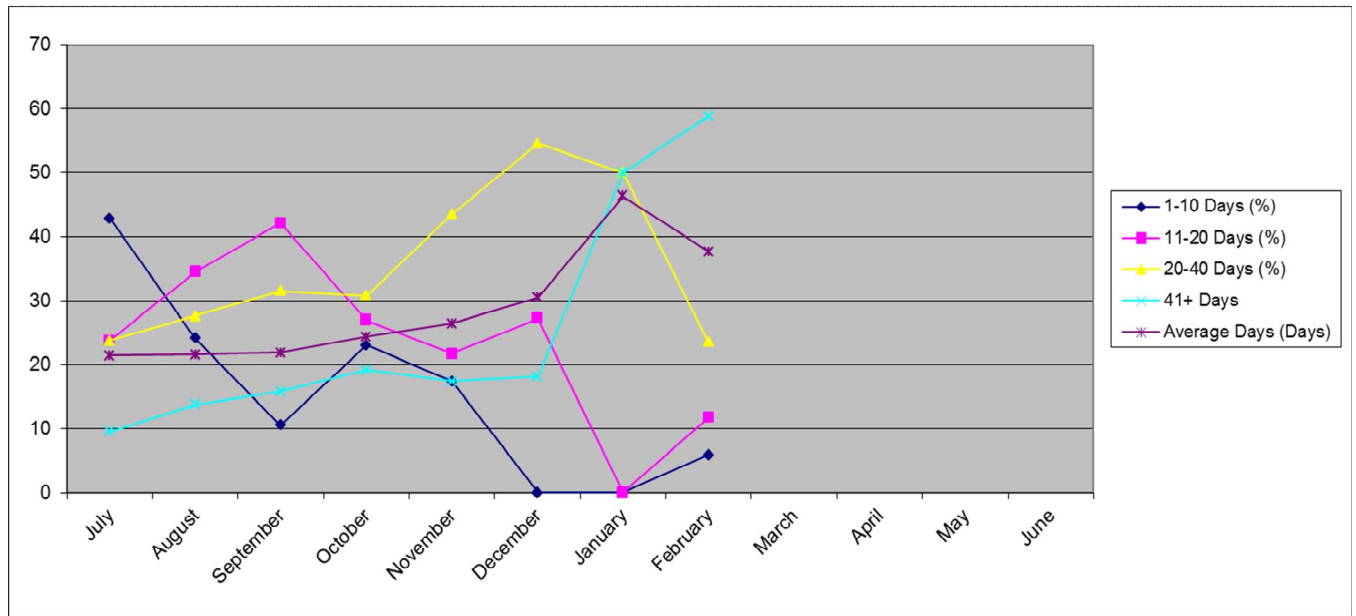
PLANNING APPLICATIONS LODGED 2010-2012



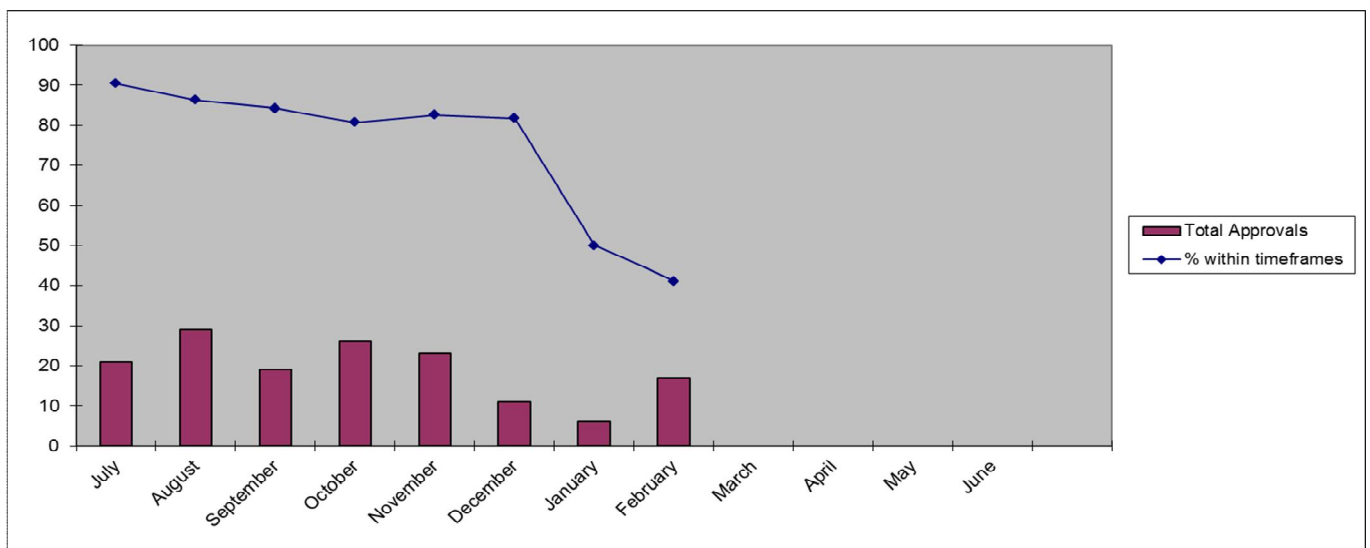
PLANNING APPLICATION APPROVALS 2010-2012



PLANNING APPROVAL TIMEFRAMES



TOTAL APPROVALS & TIMEFRAME %



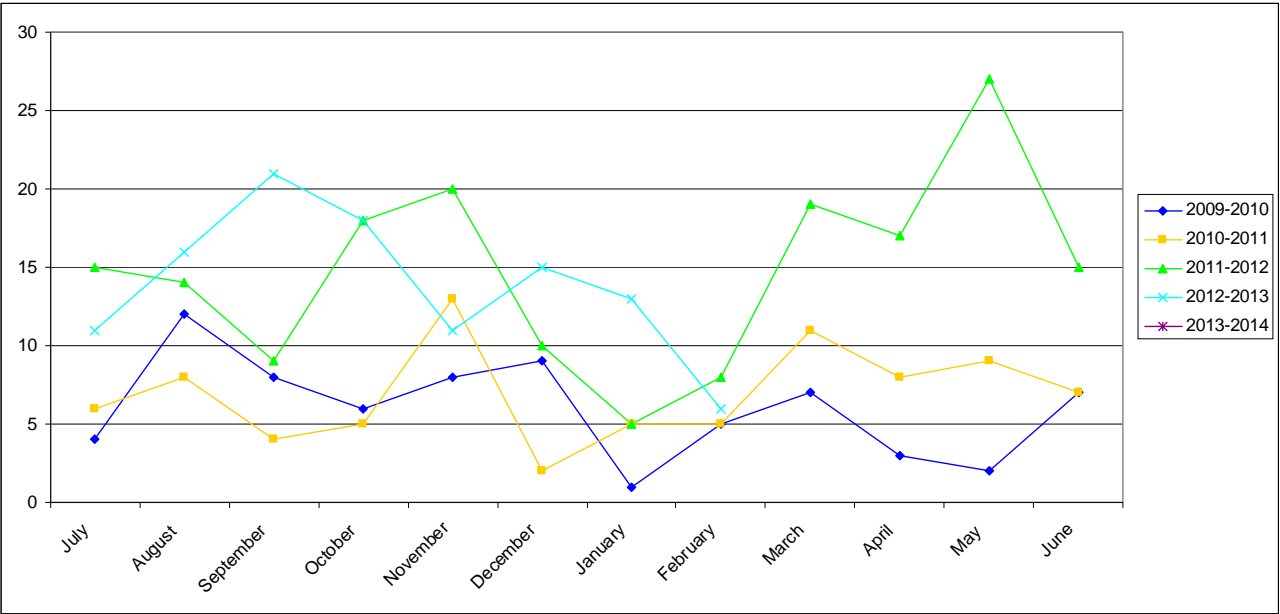
OPERATIONAL WORKS - NEW APPLICATIONS LODGED - February 2013

Application No.	Development	Location	Date Lodged
OPW/448/2013	Earthworks	39 Matson Crescent WEST GLADSTONE QLD 4680	5/2/2013
OPW/450/2013	Stormwater, Water Infrastructure, Drainage Works, Earthworks, Landscaping & Driveway.	5 Hallam Lane SOUTH GLADSTONE QLD 4680	11/2/2013
OPW/451/2013	Road Works, Stormwater, Water Infrastructure & Sewerage Infrastructure	60 Findling Road BOYNE ISLAND QLD 4680	8/2/2013
OPW/452/2013	Road Works, Stormwater, Drainage Works, Earthworks & Sewerage Infrastructure	79 Off Lane SOUTH GLADSTONE QLD 4680	20/2/2013
OPW/453/2013	Road Works, Stormwater, Water Infrastructure, Drainage Works, Earthworks, Sewerage Infrastructure, Signage & Clearing Vegetation Under The Planning Scheme	Lot 501 SP 253205, Capricornia Drive CALLIOPE QLD 4680	20/2/2013
OPW/454/2013	Road Works, Stormwater, Earthworks & Sewerage Infrastructure	4 Dalrymple Drive TOOLOOA QLD 4680	22/2/2013

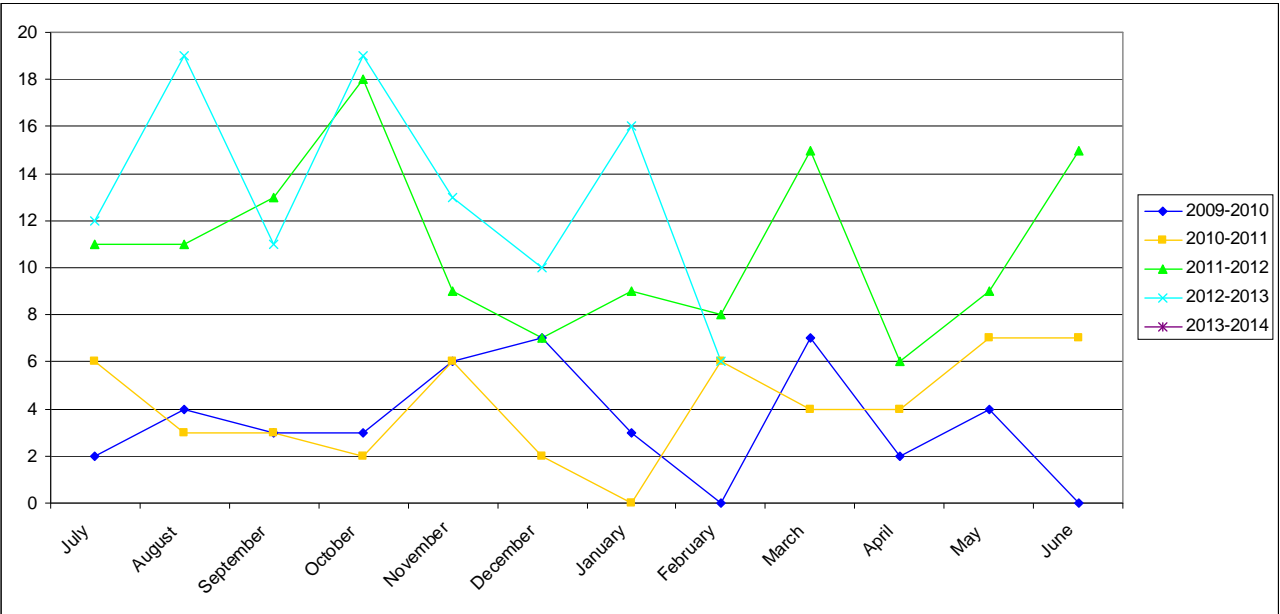
OPERATIONAL WORKS - DELEGATED DECISIONS - February 2013

Application No.	Development	Location	Decision Date
OPW/366/2012	8 Jenny Lind Court BOYNE ISLAND QLD 4680	8 Jenny Lind Court BOYNE ISLAND QLD 4680	18/2/2013
OPW/395/2012	23 Parsloe Street TELINA QLD 4680	23 Parsloe Street TELINA QLD 4680	21/2/2013
OPW/396/2012	49 Ann Street SOUTH GLADSTONE QLD 4680	49 Ann Street SOUTH GLADSTONE QLD 4680	21/2/2013
OPW/405/2012	12 Linville Court KIN KORA QLD 4680	12 Linville Court KIN KORA QLD 4680	26/2/2013
OPW/368/2012	16 Johnson Street GLEN EDEN QLD 4680 & Lot 3 SP 225799, Glenlyon Road GLEN EDEN QLD 4680	16 Johnson Street GLEN EDEN QLD 4680 & Lot 3 SP 225799, Glenlyon Road GLEN EDEN QLD 4680	12/2/2013
OPW/242/2011	Lot 0 SP 252924, Glenlyon Road GLEN EDEN QLD 4680	Lot 0 SP 252924, Glenlyon Road GLEN EDEN QLD 4680	21/2/2013

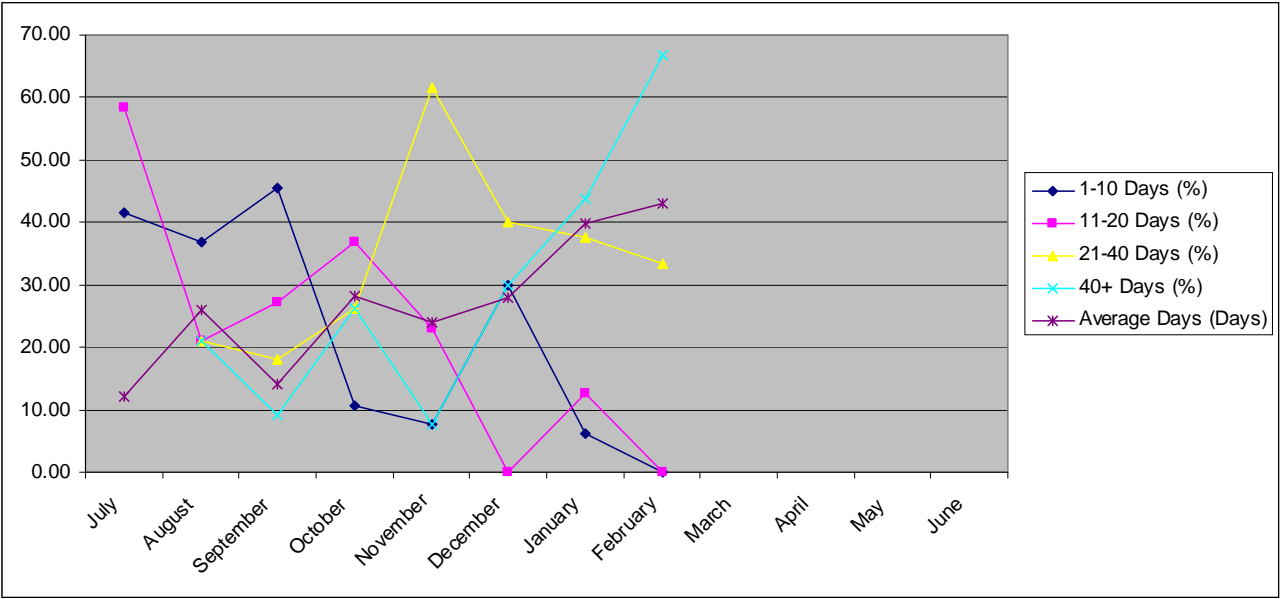
OPERATIONAL WORKS LODGEMENT 2009-2012



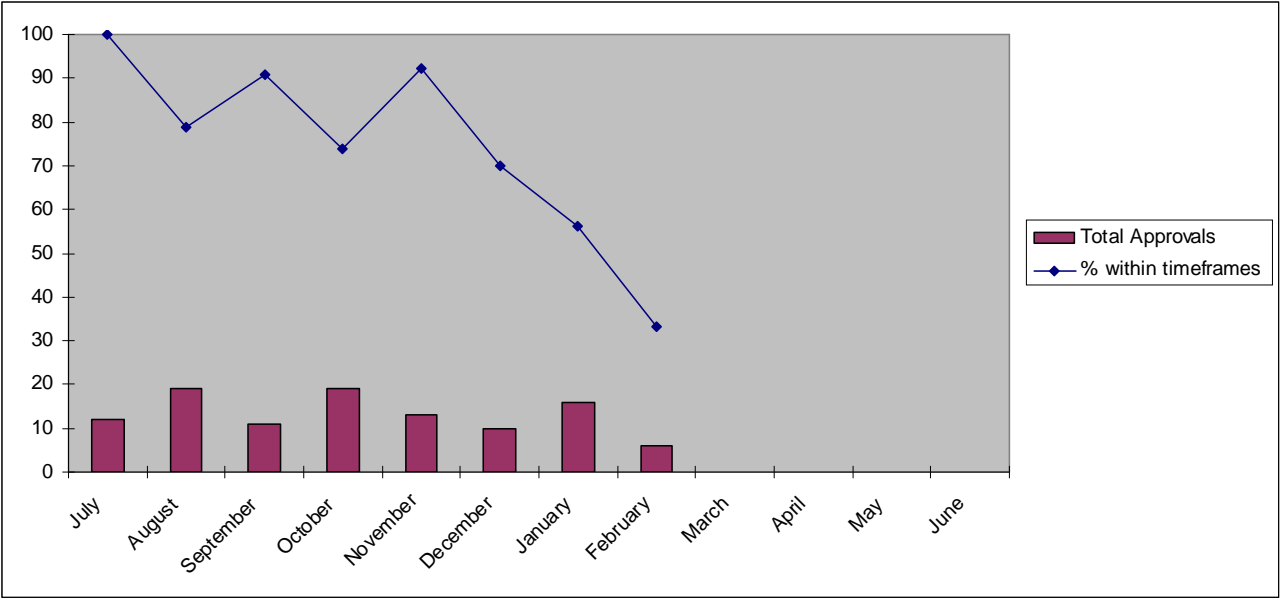
OPERATIONAL WORKS DECISIONS 2009-2012



OPERATIONAL WORKS APPROVAL TIMEFRAMES

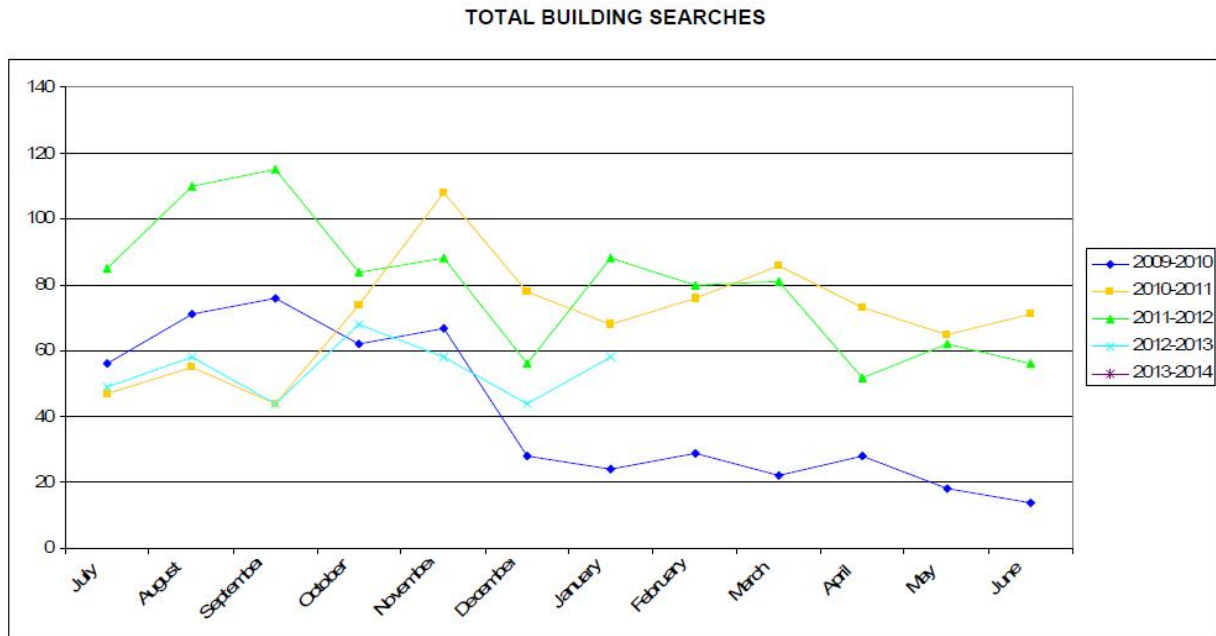


TOTAL APPROVALS & TIMEFRAME %

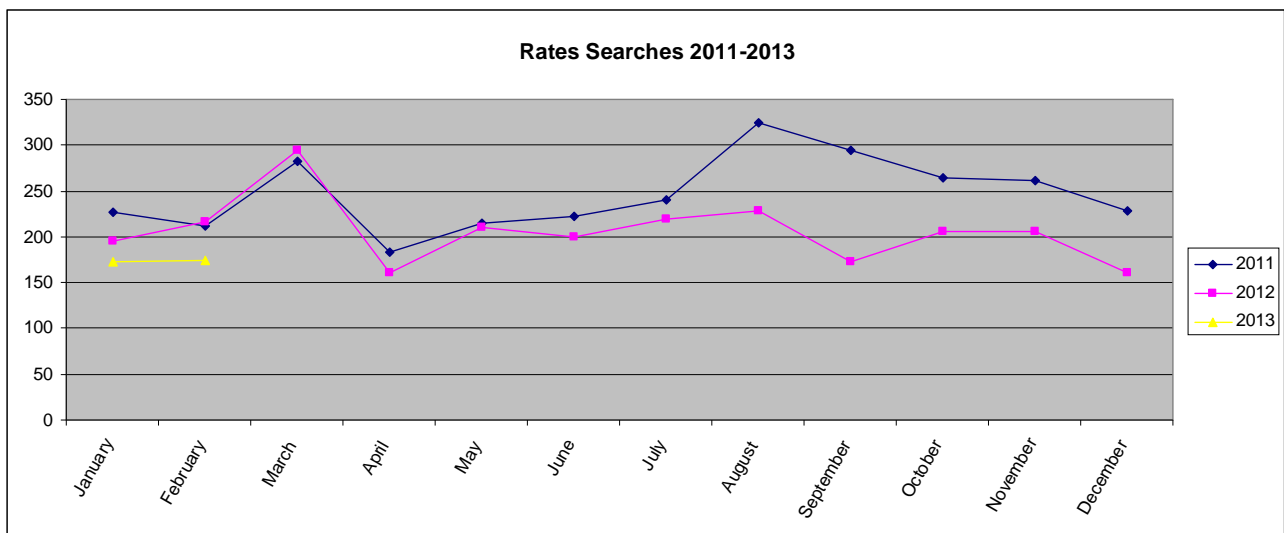


BUILDING SECTION STATISTICS

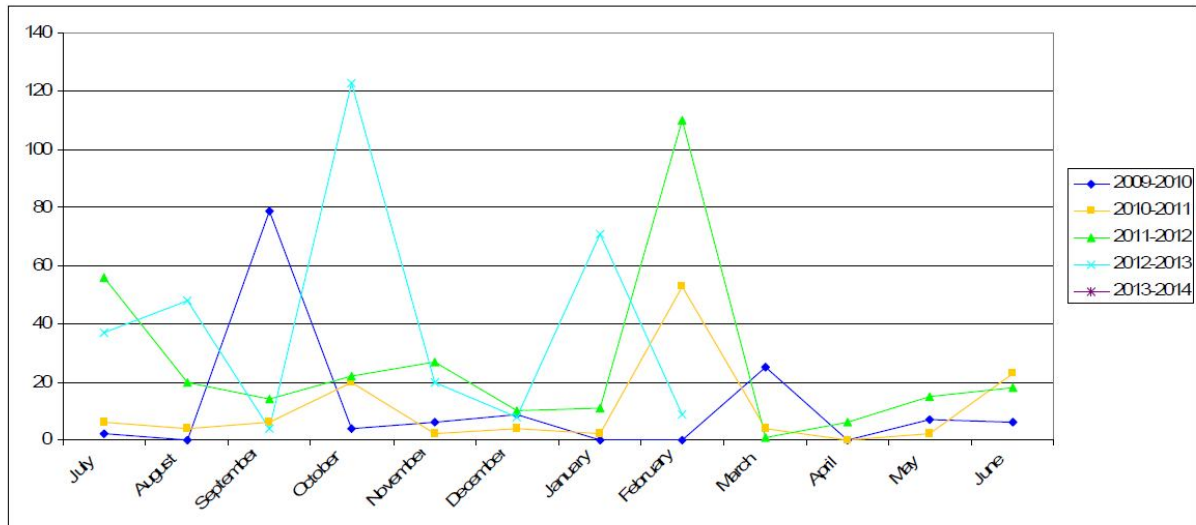
BUILDING SEARCHES CONDUCTED 2009-2013



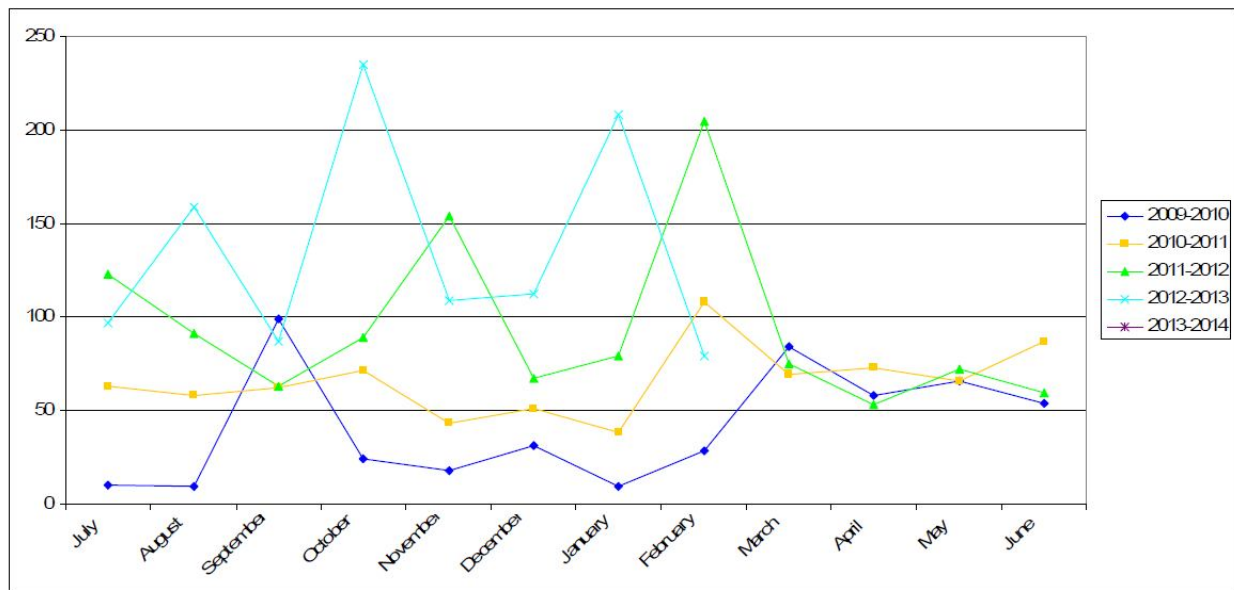
RATES SEARCHES 2011-2013



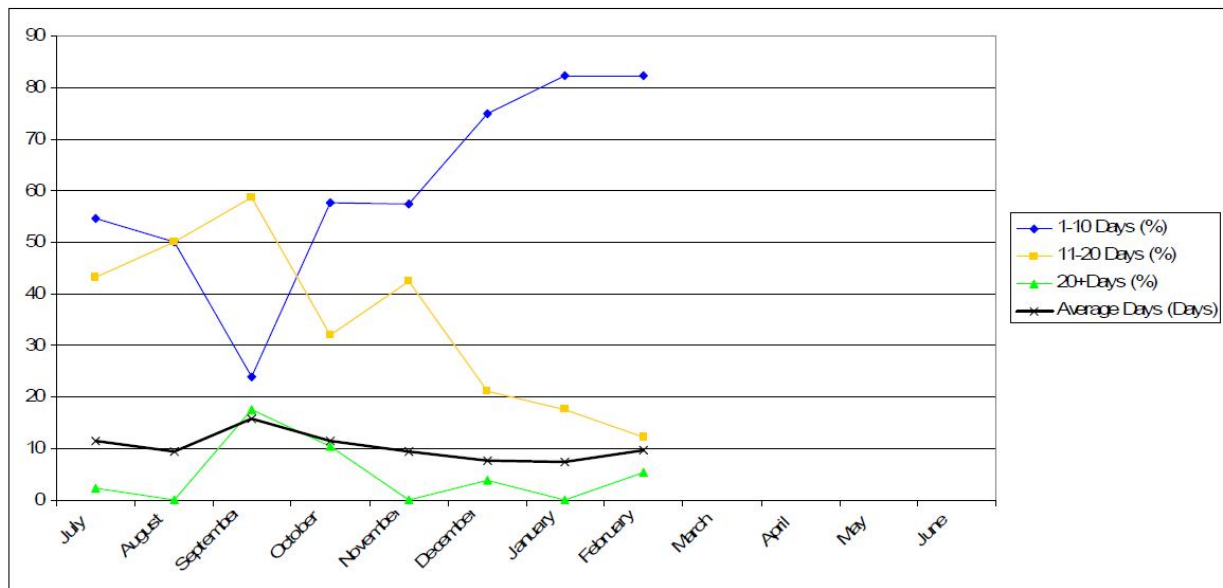
TOTAL UNIT/DUPLEX APPROVALS (NO. OF UNITS)



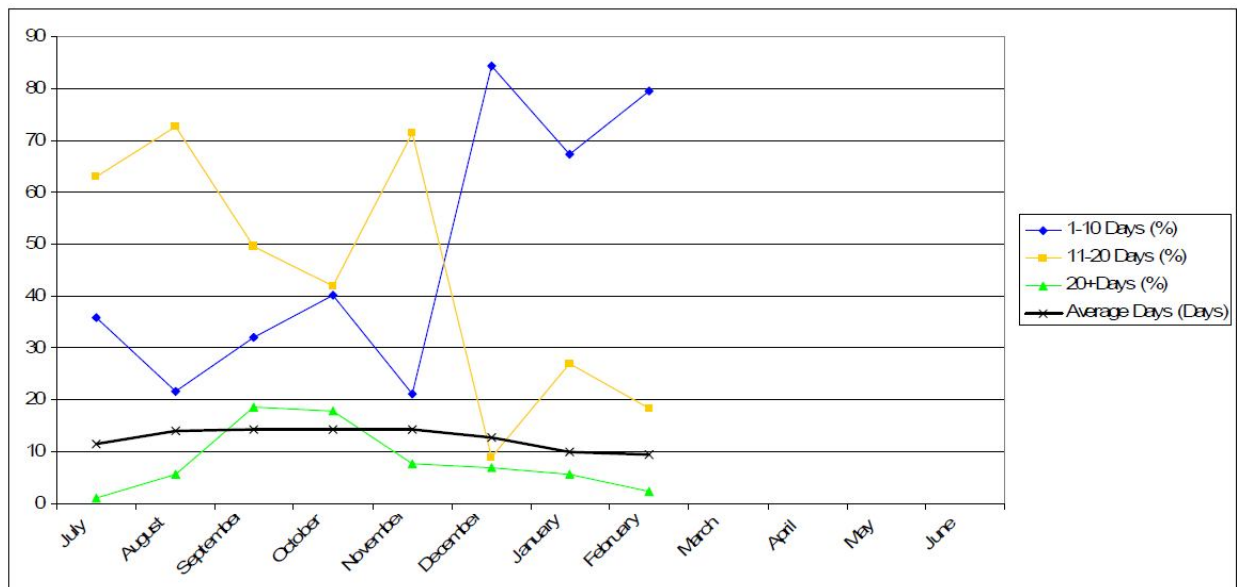
TOTAL HOUSING UNIT APPROVALS (DWELLING, DUPLEX, UNITS)



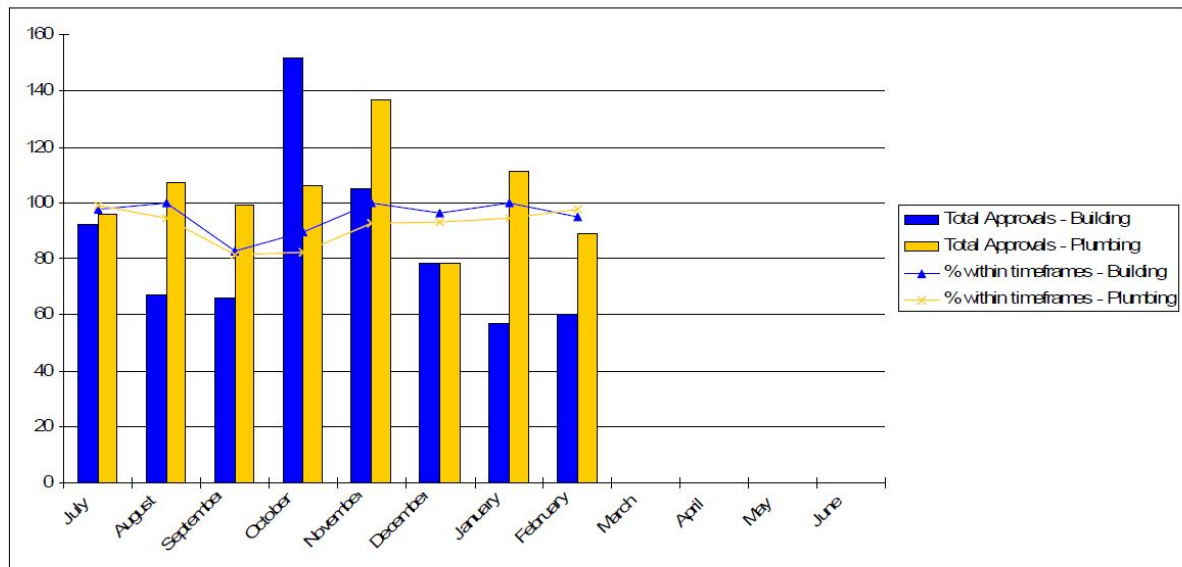
BUILDING APPROVAL TIMES – FROM 1 JULY 2012



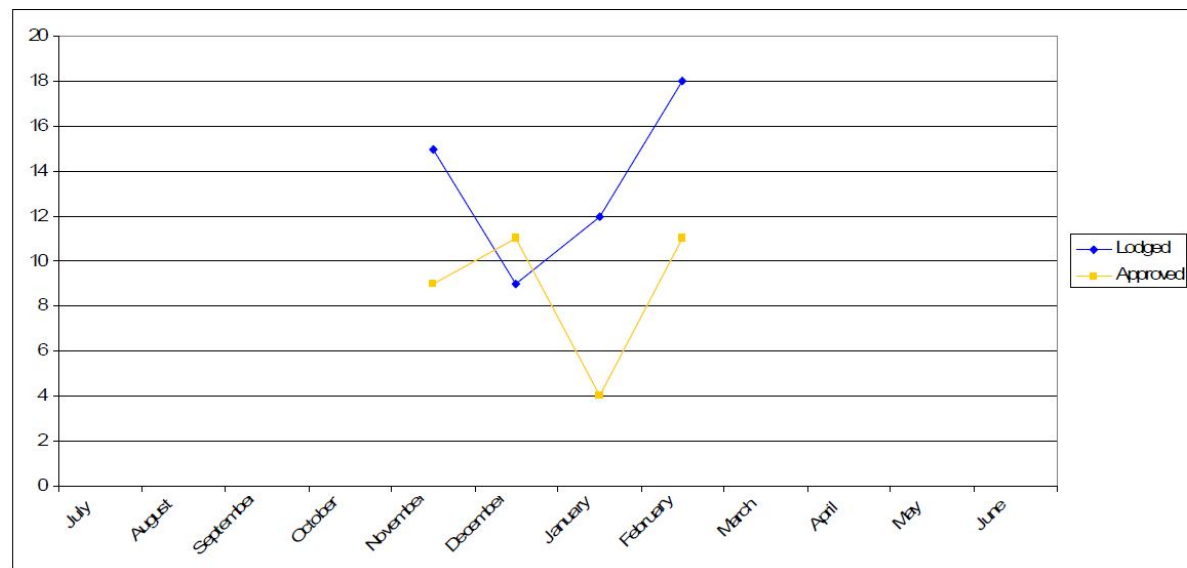
PLUMBING APPROVAL TIMES – FROM 1 JULY 2012



BUILDING & PLUMBING APPROVALS – WITHIN REGULATORY TIMEFRAMES – FROM 1 JULY 2012

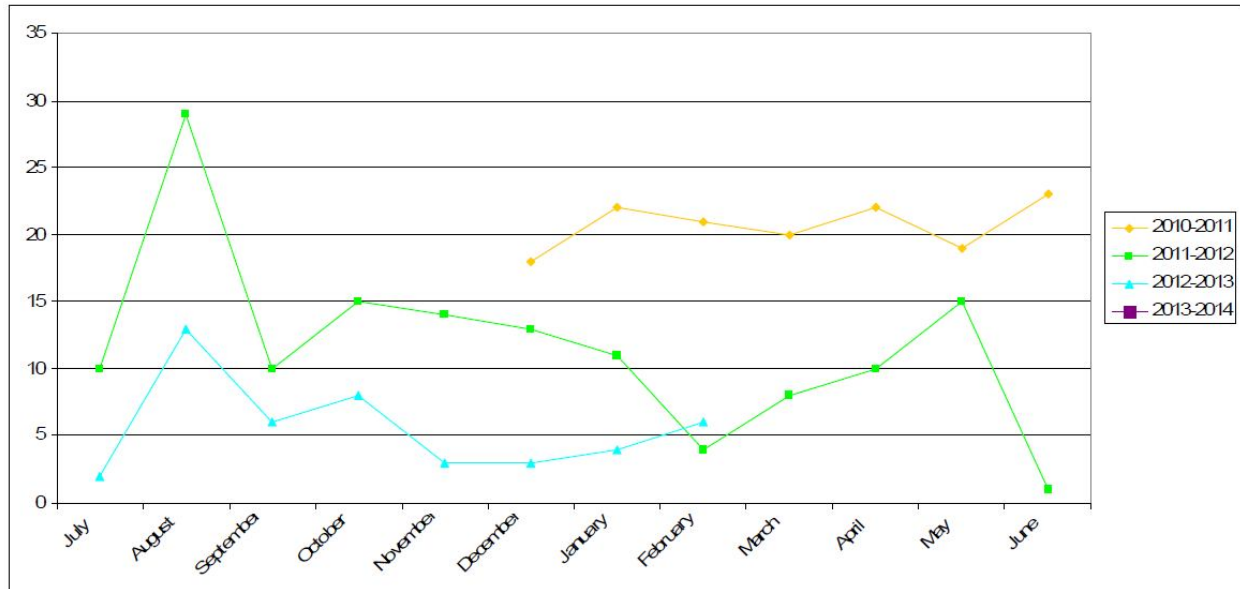


BOUNDARY RELAXATION APPLICATIONS – FROM 1 NOVEMBER 2012



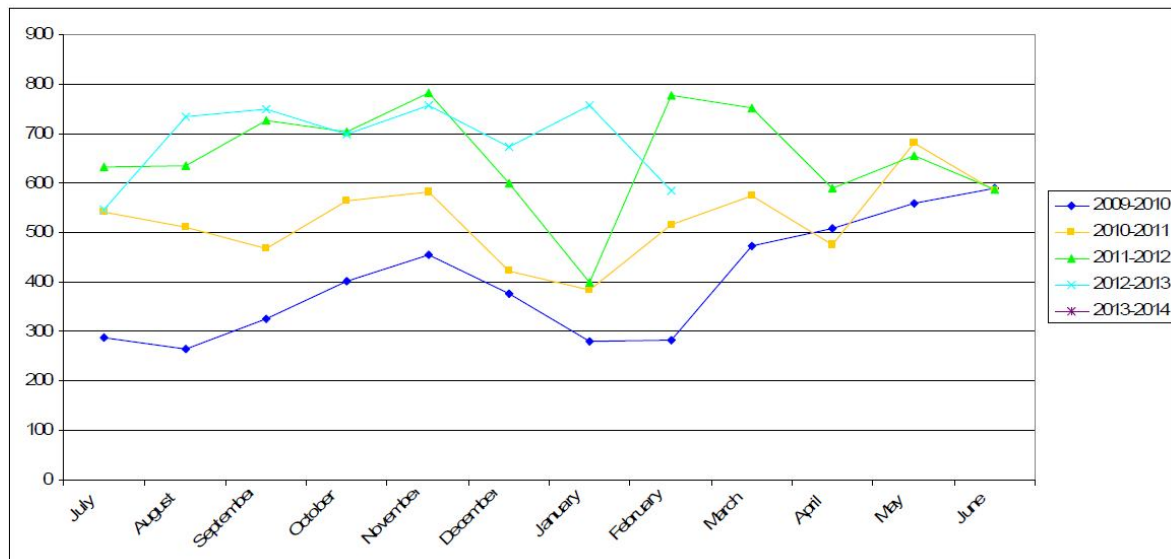
BUILDING & PLUMBING – POOL SAFETY CERTIFICATES ISSUED

POOL SAFETY CERTIFICATES ISSUED



BUILDING & PLUMBING – BUILDING & PLUMBING INSPECTIONS

INSPECTIONS CONDUCTED BY BUILDING & PLUMBING OFFICERS



Jodie Clow
 Technical Officer – Planning
 7 March 2012