



## Development Services

11/2012

**Subject: DEVELOPMENT STATISTICS – JUNE 2012**

**File Reference: DB10.2**

---

The information below is provided for the month of June 2012 in the following areas:-

- New planning applications lodged
- Delegated planning approvals
- Council planning approvals
- Graph Showing Planning Lodgements & Approvals
- New operational works applications lodged
- Delegated Operational works approvals
- Graph Showing Operational Works Lodgements & Approvals
- Graph showing Building Searches completed for 2009-2012
- Graph showing Rate Searches completed 2010/2011/2012
- Graph showing New Dwelling Approval Comparison for 2009-2012
- Graph showing New Dwelling Approvals broken down into LG area.
- Graph showing Pool Safety Certificates Issued
- Graph showing Building & Plumbing Inspections conducted

### **PLANNING - NEW APPLICATIONS LODGED – June 2012**

Application No.	Development	Location	Date Lodged
DA/642/2012	Road Dedication and Balance Lot	19 Applin Place, TANNUM SANDS QLD 4680	4 June 2012
DA/643/2012	Home Occupation	8 Starfish Street, AGNES WATER QLD 4677	4 June 2012
DA/644/2012	Dual Occupancy	42 Grahame Colyer Drive, AGNES WATER QLD 4677	4 June 2012
DA/645/2012	Multiple Unit Residential (3 units)	260 Auckland Street, SOUTH GLADSTONE QLD 4680	4 June 2012
DA/646/2012	Estate Sales Office & Display Home (12 sites)	60 Findling Road, BOYNE ISLAND QLD 4680	4 June 2012
DA/647/2012	Reconfiguring a lot (1 into 2)	7 Bursaria Court, KIN KORA QLD 4680	14 June 2012
DA/649/2012	Estate Sales Office	7 Scholes Way, KIRKWOOD QLD 4680	14 June 2012
DA/650/2012	Reconfiguration of a Lot (1 into 5)	268 Schulze Road, BEECHER QLD 4680	15 June 2012
DA/651/2012	Multiple Unit Residential (33 Units)	71 Auckland Street, GLADSTONE QLD 4680	18 June 2012

DA/652/2012	Gaming Premises	38 Goondoon Street, GLADSTONE QLD 4680	18 June 2012
DA/653/2012	Expansion to Extractive Industry	168 Silica Road, TANNUM SANDS QLD 4680 & 485 Tannum Sands Road, TANNUM SANDS QLD 4680	18 June 2012
DA/654/2012	Relatives Apartment	5 Luana Crescent, BURUA QLD 4680	20 June 2012
DA/655/2012	Change in Zone from Rural to Rural Residential & Reconfiguration of a Lot (2 into 57)	375 Brendonna Road, BURUA QLD 4680 330 Brendonna Road, BURUA QLD 4680	22 June 2012
DA/656/2012	Awoonga Country Stage 3 (1 into 23 plus Balance Lot)	140 Awoonga Dam Road, BENARABY QLD 4680	22 June 2012
DA/657/2012	Duplex	113 Dixon Drive, TELINA QLD 4680	26 June 2012
DA/658/2012	Preliminary Approval - Child Care Centre, Medical Centre, Local Surgery, Food Premises, Shop, Commercial Premises, Office, Neighbourhood Centre, Community Advisory Service, Youth Centre, Murri Centre, Child & Family Centre, Educational Establishment, Dwelling House, Open Space & Recreation, Accommodation Building, Aged Persons Accommodation, Multiple Unit Residential & Duplex Unit & Reconfiguration of a Lot (1 into 67)	Lot 7 RP 618441, Paterson Street, WEST GLADSTONE QLD 4680	27 June 2012
DA/659/2012	Preliminary Approval - Change of Zone to Residential and Reconfiguration of a Lot (1 into 41)	10 Boundary Road, BEECHER QLD 4680	29 June 2012

**PLANNING - COUNCIL DECISIONS – June 2012**

<b>Application No.</b>	<b>Development</b>	<b>Location</b>	<b>Decision Date</b>
DA/490/2011	Office, Licensed Premises, Food Premises, Indoor Entertainment & Car Park & Reconfiguration of Lot (Access Easement)	58 Goondoon Street GLADSTONE QLD 4680 & 19 Yarroon Street GLADSTONE QLD 4680	5/6/2012
DA/525/2012	Small Lot Housing and Reconfiguring a Lot (1 into 2)	1 Telopea Place KIRKWOOD QLD 4680	5/6/2012
DA/543/2012	Duplex Unit	12 Orchard Drive KIRKWOOD QLD 4680	19/6/2012

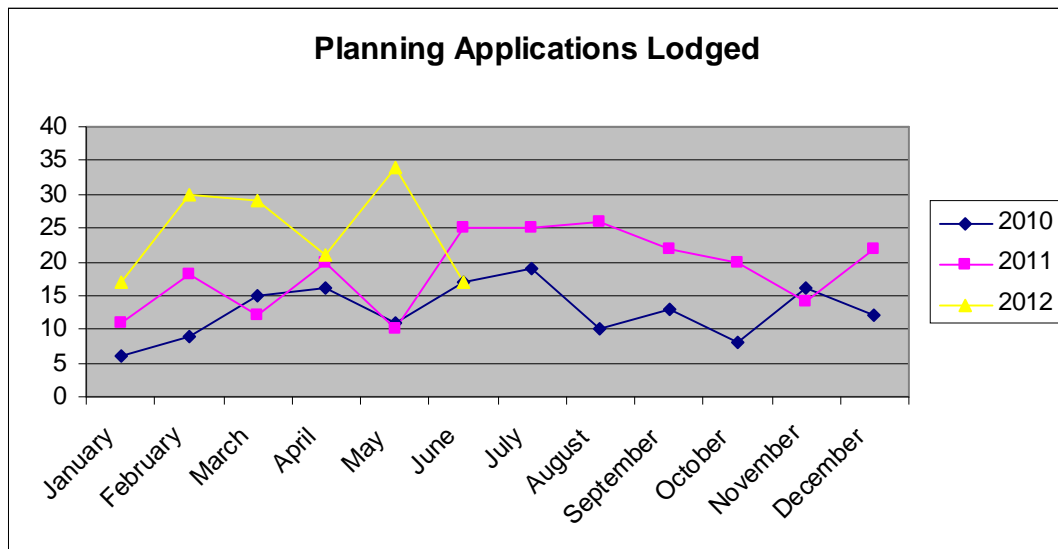
DA/521/2012	Business (Office)	8/100 Goondoon Street GLADSTONE QLD 4680	19/6/2012
DA/494/22011	Multiple Unit Residential (168 units) & Reconfiguring a Lot (1 into 7)	Lot 4 SP 225799, Glenlyon Road, GLEN EDEN QLD 4680	5/6/2012
DA/507/2012	Small Lot Housing & Reconfiguring a Lot (1 into 2)	16 Leichhardt Court, GLEN EDEN QLD 4680	5/6/2012
DA/540/2012	Duplex Unit	10 Telopea Place, KIRKWOOD QLD 4680	5/6/2012
DA/587/2012	Business (Offices)	173-175 Goondoon Street, GLADSTONE QLD 4680	19/06/2012
DA/500/2012	Multiple Unit Residential (31 Units)	Lot 950 SP 246136, Kirkwood Road, KIRKWOOD QLD 4680	19/06/2012
DA/508/2012	Duplex	39 Cairncross Street, SUN VALLEY QLD 4680	19/06/2012
DA/41804/2007	Preliminary Approval for Master Planned Residential Community Comprising Some 1312 Dwellings at Different Densities, Shops, (Shopping Centre), Indoor Recreation (Community Hall), Outdoor Recreation & Sewerage Treatment Plant (Managed by a Community Management Scheme) and currency of period of 12 years. Preliminary Approval for Reconfiguration of lot community title subdivision of some 1138 Lots (Including one Control deed for future medium density housing and one control deed for future town centre) and currency period for 12 years.	Lot 384 FL 4055, Turkey Beach Road, RODDS BAY QLD 4678	19/09/2012

**PLANNING - DELEGATED DECISIONS – June 2012**

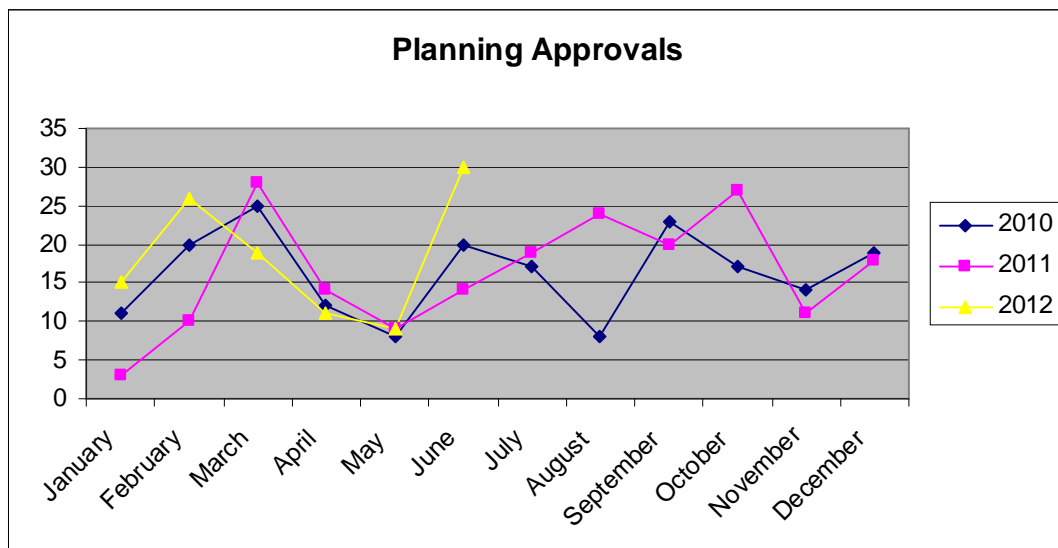
Application No.	Development	Location	Decision Date
DA/579/2012	Extension to Existing Premises - Warehouse	9A Red Rover Road CALLEMONTDAH QLD 4680	26/6/2012
DA/601/2012	Multiple Unit Residential (6 Units)	214 - 216 Oaka Street SOUTH GLADSTONE QLD 4680	29/6/2012
DA/503/2012	Local Industry (Low Impact)	10 Dennis Street BOYNE ISLAND QLD 4680	18/6/2012

DA/557/2012	Dual Occupancy	6 Springs Road AGNES WATER QLD 4677	21/6/2012
DA/445/2011	Multiple Unit Residential (6 Units)	27 Roberts Street SOUTH GLADSTONE QLD 4680	28/6/2012
DA/531/2012	Boundary Realignment (2 into 2)	6-10 Boys Road SOUTH TREES QLD 4680	1/6/2012
DA/547/2012	Reconfiguring a Lot (1 into 2)	19 Parsloe Street TELINA QLD 4680	21/6/2012
DA/548/2012	Reconfiguring a Lot (2 into 3)	16 Ashton Street TELINA QLD 4680	1/6/2012
DA/563/2012	Reconfiguring a Lot (1 into 2)	23 Parsloe Street TELINA QLD 4680	21/6/2012
DA/635/2012	Boundary Realignment (2 into 2)	209 - 2011 Goondoon Street GLADSTONE QLD 4680	28/6/2012
DA/589/2012	Reconfiguring a Lot (1 into 2)	11 Maraboon Court CLINTON QLD 4680	21/6/2012
DA/580/2012	Boundary Realignment	16 Woodrow Drive AGNES WATER QLD 4677	21/6/2012
DA/476/2011	1 into 2	17 Victoria Avenue GLEN EDEN QLD 4680	4/6/2012
DA/586/2012	Reconfiguring a Lot (1 into 2)	69 Chamberlain Road BURUA QLD 4680	18/6/2012
DA/520/2012	Boundary Realignment (2 into 2)	239 Dude Ranch Road IVERAGH QLD 4680 & 30 Christensen Road IVERAGH QLD 4680	25/6/2012
DA/539/2012	LNG Loading Platform Including Access Jetty & Associated Walkways	LOT 3 SP 228454 & LOT 3 SP 228186, UNNAMED ROAD, CURTIS ISLAND QLD 4680	20/6/2012
DA/562/2012	Reconfiguring a Lot (1 into 2)	19 Awoonga Dam Road, BENARABY QLD 4680	1/6/2012
DA/593/2012	Multiple Unit Residential (5 Town Houses)	9 Vincent Street, WEST GLADSTONE QLD 4680	1/6/2012
DA/495/2012	Reconfiguring a Lot - Precinct 1 - Stages 1-5 - 4 into 417 - (412 Residential Lots, 1 Community Lot and 4 Balance Lots) and Material Change of Use - Small Lot Housing (56 Lots)	240 Gladstone Benaraby Road, WURDONG HEIGHTS & 15 Dennis Street, BOYNE ISLAND	1/6/2012

### ***PLANNING APPLICATIONS LODGED 2010-2012***



### ***PLANNING APPLICATION APPROVALS 2010-2012***



# **OPERATIONAL WORKS - NEW APPLICATIONS LODGED - June 2012**

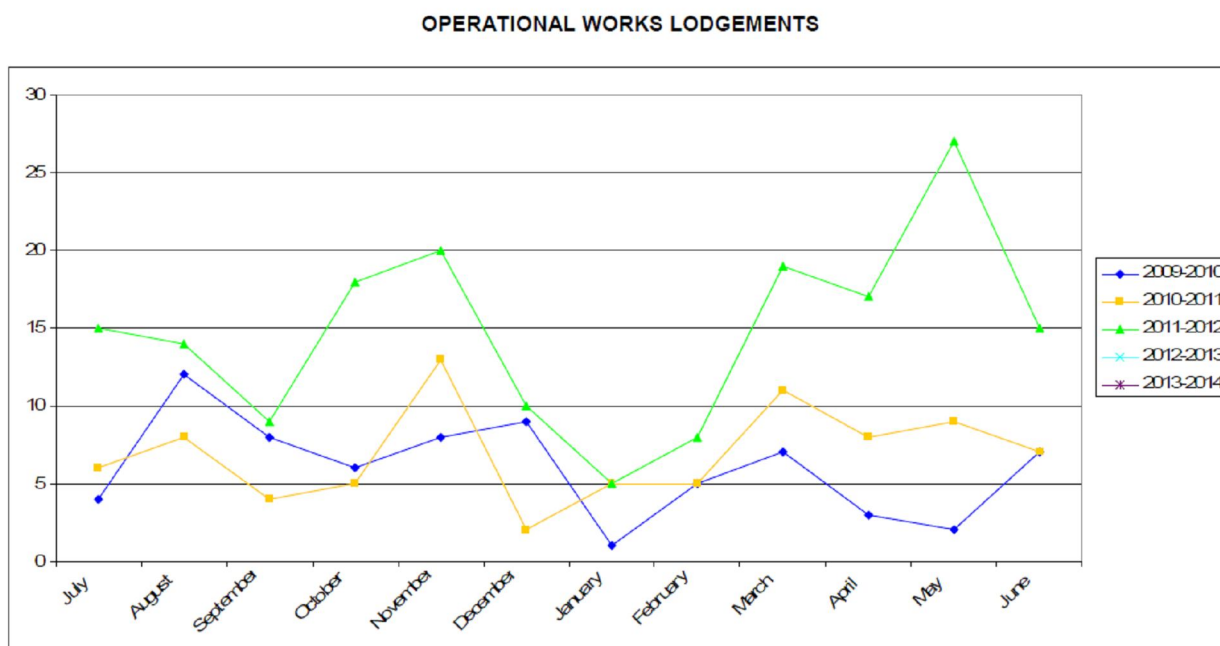
<b>Application No.</b>	<b>Development</b>	<b>Location</b>	<b>Date Lodged</b>
OPW/329/2012	Roadworks, drainage works, earthworks & sewerage infrastructure.	39 Guerassimoff Road YARWUN QLD 4694	21/6/2012
OPW/330/2012	Water Infrastructure	30 Goondoon Street GLADSTONE QLD 4680	22/6/2012
OPW/331/2012	Water Infrastructure & Sewerage Infrastructure	1 Telopea Place KIRKWOOD QLD 4680	26/6/2012
OPW/332/2012	Stormwater, Water Infrastructure, Drainage Works, Earthworks and Landscaping	38 Kent Street WEST GLADSTONE QLD 4680	28/6/2012
OPW/333/2012	Roadworks, stormwater, water infrastructure, drainage works, earthworks, sewerage infrastructure, landscaping & signage.	Lot 2 RP 618453, Rules Beach Road RULES BEACH QLD 4674	29/6/2012
OPW/324/2012	Road Works, Stormwater, Water Infrastructure, Drainage Works, Earthworks, Sewerage Infrastructure, Landscaping, Signage, Clearing Vegetation under the Planning Scheme and Prescribed Tidal Works	Lot 400 CTN 801110, Prince Regent Esplanade BARNEY POINT QLD 4680	7/6/2012
OPW/325/2012	Sewerage Infrastructure	2 Parksville Drive NEW AUCKLAND QLD 4680	12/6/2012
OPW/326/2012	Stormwater, water infrastructure, earthworks and sewerage infrastructure.	39 Scenery Street WEST GLADSTONE QLD 4680	15/6/2012
OPW/327/2012	Roadworks, stormwater, water infrastructure, earthworks and sewerage infrastructure.	2 Pioneer Drive TELINA QLD 4680	15/6/2012
OPW/328/2012	Roadworks, stormwater, water infrastructure, drainage works, earthworks and sewerage infrastructure.	25 Rossella Street WEST GLADSTONE QLD 4680	18/6/2012

# **OPERATIONAL WORKS - DELEGATED DECISIONS - June 2012**

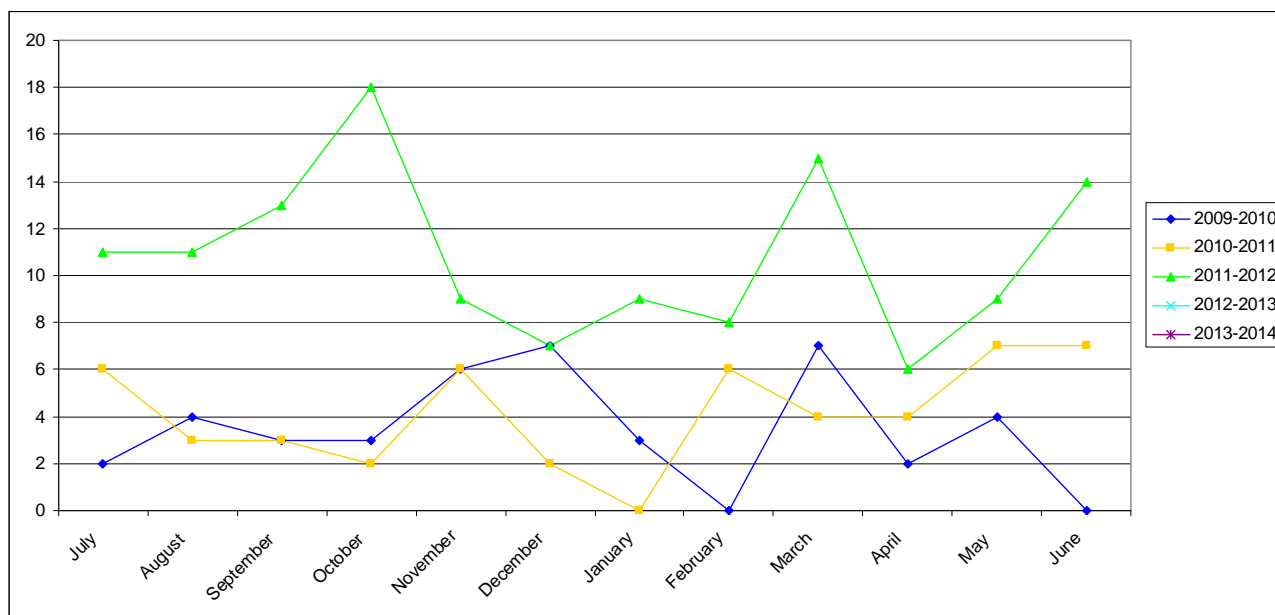
<b>Application No.</b>	<b>Development</b>	<b>Location</b>	<b>Decision Date</b>
OPW/309/2012	Sewerage Infrastructure	214 & 216 Oaka Street SOUTH GLADSTONE QLD 4680	7/6/2012

OPW/224/2011	Roadworks, Stormwater, Drainage Works, Earthworks & Sewerage Infrastructure	30 Goondoon Street GLADSTONE QLD 4680	13/6/2012
OPW/288/2012	Stormwater, Earthworks and Sewerage Infrastructure	3 Jenny Lind Court BOYNE ISLAND QLD 4680	27/6/2012
OPW/196/2011	Roadworks, Stormwater, Drainage Works, Earthworks & Water Infrastructure	2320 Dawson Highway CALLIOPE QLD 4680	1/6/2012
OPW/278/2012	Stormwater, Drainage Works & Landscaping	42 Bensted Road CALLEMONTDAH QLD 4680	12/6/2012
OPW/263/2012	Stormwater, drainage works, earthworks, sewerage infrastructure & other.	5, 7 & 9 View Street WEST GLADSTONE QLD 4680	1/6/2012
OPW/266/2012	Stormwater, Water Infrastructure, Sewerage Infrastructure and Landscaping	2 Beezley Street GLEN EDEN QLD 4680	26/6/2012
OPW/246/2012	Roadworks, Stormwater, Water Infrastructure, Earthworks, Sewerage Infrastructure & Landscaping	5 Cressbrook Street CLINTON QLD 4680	5/6/2012
OPW/270/2012	Road Works, Water Infrastructure, Drainage Works and Sewerage Infrastructure	4 Willow Street NEW AUCKLAND QLD 4680	19/6/2012
OPW/276/2012	Landscaping	Lot 101 RP 836843, Tarrawonga Drive CALLIOPE QLD 4680	14/6/2012
OPW/219/2011	Landscaping	Lot 201 SP 242764, Kirkwood Road O'CONNELL QLD 4680	8/6/2012
OPW/272/2012	Water Infrastructure, Drainage Works, Earthworks and Sewerage Infrastructure	41 McLeod Street BOYNE ISLAND QLD 4680	20/6/2012
OPW/241/2011	Road Works, Storm Water, Water Infrastructure, Drainage Works, Earthworks, Sewerage Infrastructure	60 Findling Road & 15 Dennis Street BOYNE ISLAND QLD 4680	21/6/2012
OPW/252/2012	Roadworks, drainage works, stormwater, earthworks, water infrastructure, sewerage infrastructure & clearing vegetation under the planning scheme.	11 John Dory Drive TOOLOOA QLD 4680	5/6/2012

## OPERATIONAL WORKS LODGEMENT 2009-2012



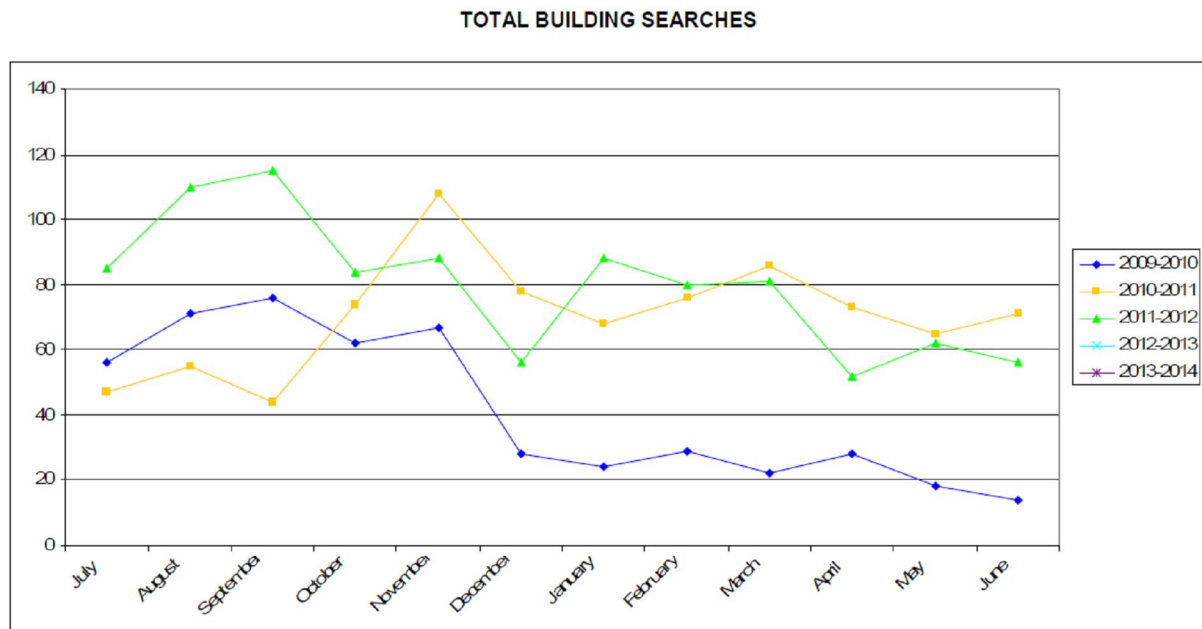
## OPERATIONAL DECISIONS 2009-2012



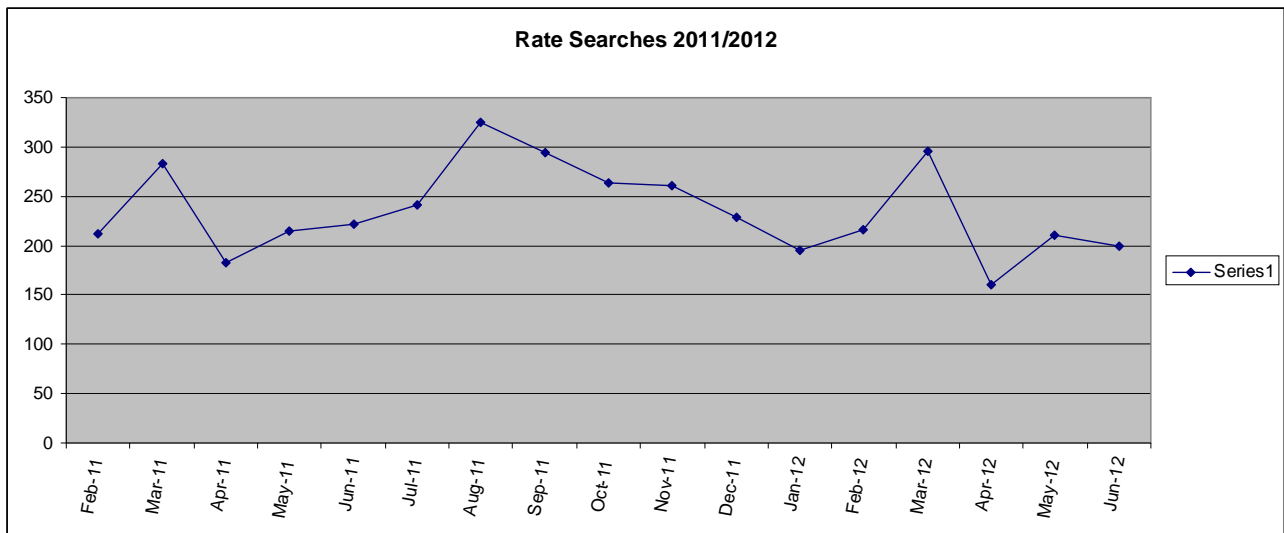


## BUILDING SECTION STATISTICS

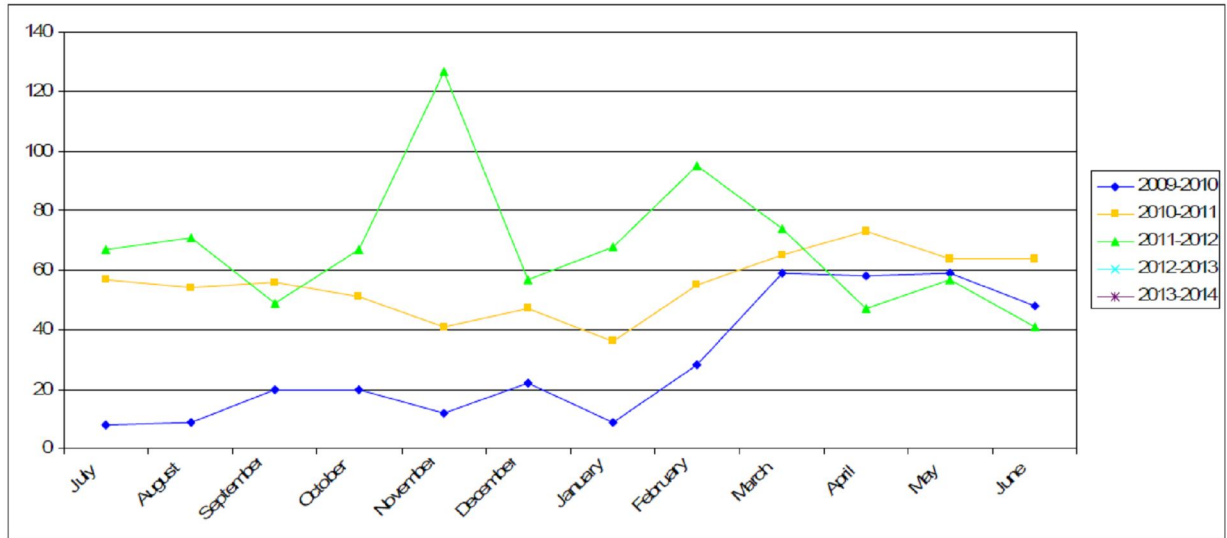
### *BUILDING SEARCHES CONDUCTED 2009-2012*



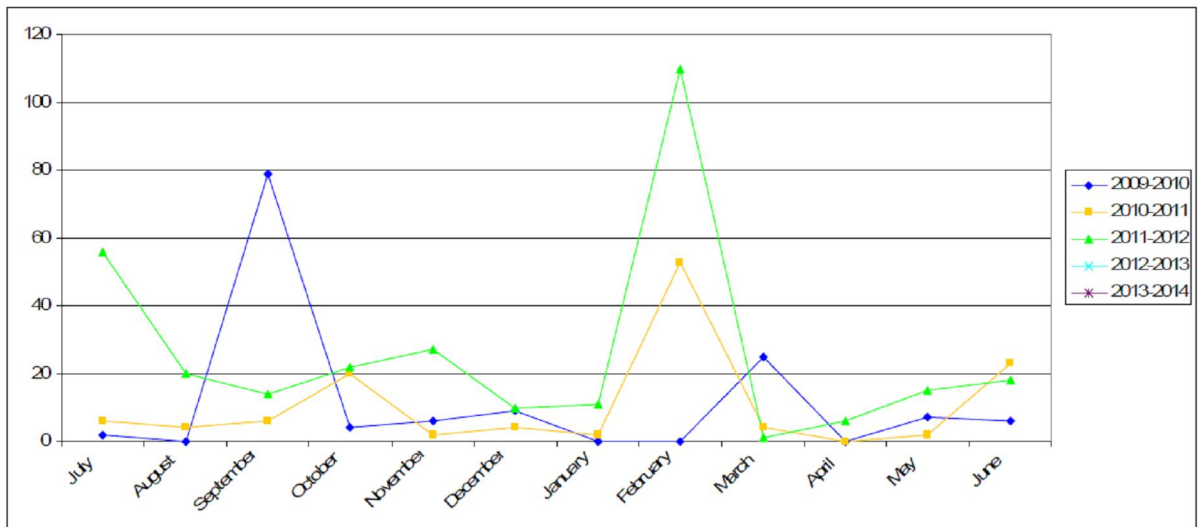
### *RATES SEARCHES 2011/2012*



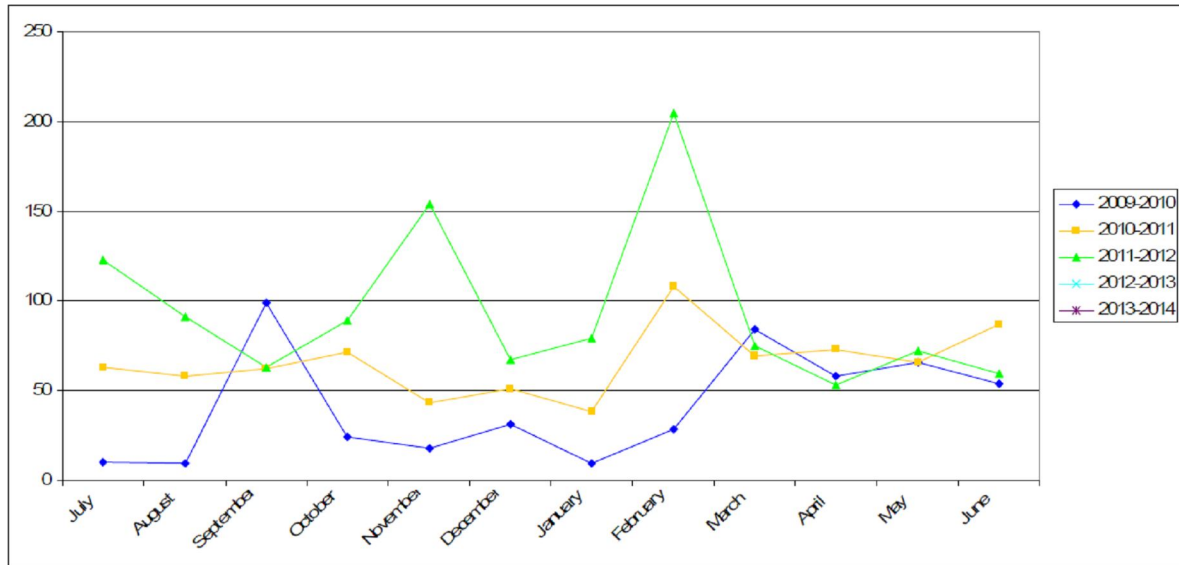
### TOTAL DWELLING APPROVALS



### TOTAL UNIT/DUPLEX APPROVALS (NO. OF UNITS)

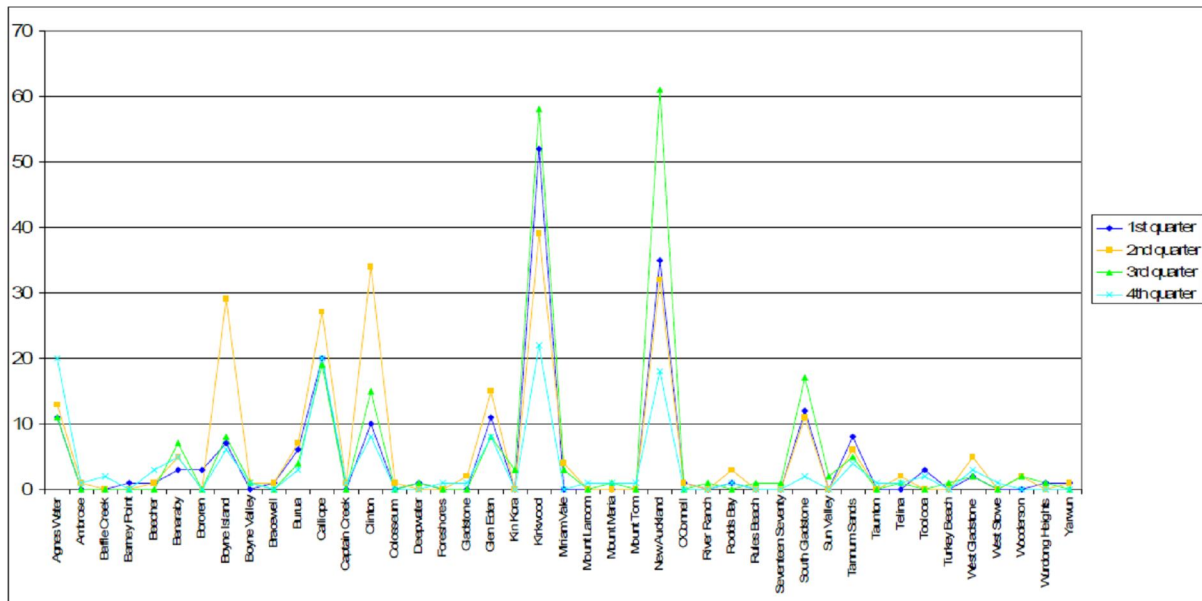


### TOTAL HOUSING UNIT APPROVALS (DWELLING, DUPLEX, UNITS)



### DWELLING APPROVALS BY SUBURB

Year to Date = 820



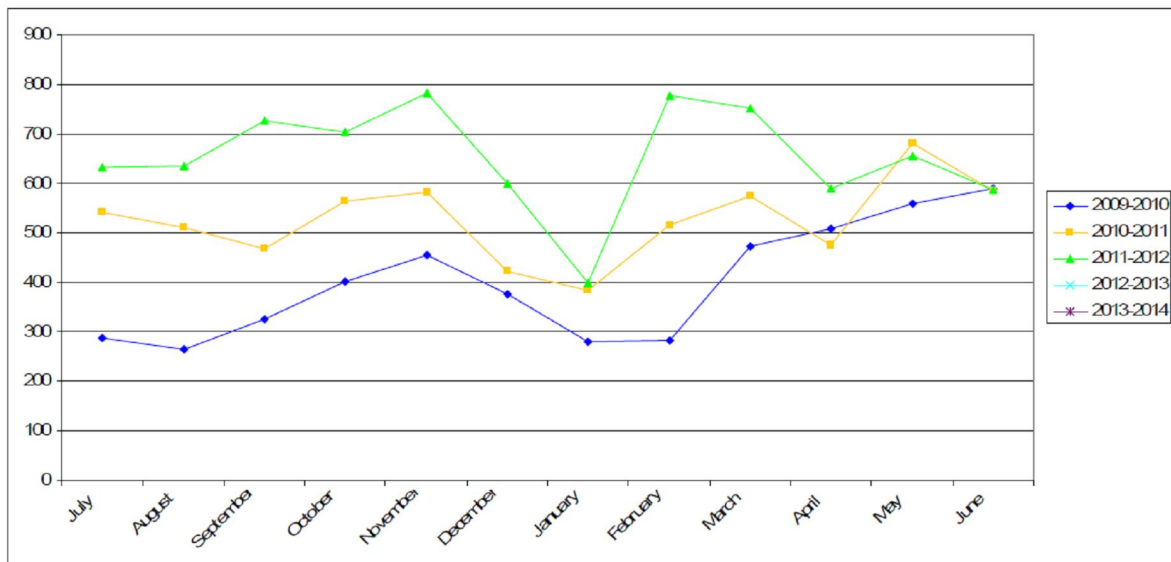
## **BUILDING & PLUMBING – POOL SAFETY CERTIFICATES ISSUED**

**POOL SAFETY CERTIFICATES ISSUED**



## **BUILDING & PLUMBING – BUILDING & PLUMBING INSPECTIONS**

**INSPECTIONS CONDUCTED BY BUILDING & PLUMBING OFFICERS**



Jodie Clow  
Technical Officer - Planning  
3 July 2012