



Development Services

7/2012

Subject: DEVELOPMENT STATISTICS – APRIL 2012

File Reference: DB10.2

The information below is provided to Councillors for the month of February 2012 in the following areas:-

- New planning applications lodged
- Delegated planning approvals
- Council planning approvals
- Graph Showing Planning Lodgements & Approvals
- New operational works applications lodged
- Delegated Operational works approvals
- Graph Showing Operational Works Lodgements & Approvals
- Graph showing Building Searches completed for 2009-2012
- Graph showing Rate Searches completed 2010/2011/2012
- Graph showing New Dwelling Approval Comparison for 2009-2012
- Graph showing New Dwelling Approvals broken down into LG area.
- Graph showing Pool Safety Certificates Issued
- Graph showing Building & Plumbing Inspections conducted

PLANNING - NEW APPLICATIONS LODGED – April 2012

Application No.	Development	Location	Date Lodged
DA/581/2012	Stage 1 (1 into 40)	15 Mingara Crescent CALLIOPE QLD 4680	2/4/2012
DA/582/2012	Stage 2 (8 Lots)	15 Mingara Crescent CALLIOPE QLD 4680	2/4/2012
DA/583/2012	Bulk Store	16 Neil Street CLINTON QLD 4680	2/4/2012
DA/584/2012	Change in Zone from Rural to Rural Residential & Residential Subdivision 2 into 57	330 Brendonna Road BURUA QLD 4680	2/4/2012
DA/586/2012	Reconfiguring a Lot (1 into 2)	69 Chamberlain Road BURUA QLD 4680	5/4/2012
DA/587/2012	Business (Offices)	173-175 Goondoon Street GLADSTONE QLD 4680	5/4/2012
DA/588/2012	Reconfiguring a Lot (1 into 2)	8 Jenny Lind Court BOYNE ISLAND QLD 4680	5/4/2012

DA/589/2012	Reconfiguring a Lot (1 into 2)	11 Maraboon Court CLINTON QLD 4680	5/4/2012
DA/590/2012	Workshop & Office Extensions to Vehicle & Machinery Sales and Hire (Industry Low Impact)	58 Yarroon Street GLADSTONE QLD 4680	5/4/2012
DA/591/2012	Food Premises (Business) & Reconfiguring a Lot (1 into 2)	4 Centenary Drive BOYNE ISLAND QLD 4680	5/4/2012
DA/592/2012	Machinery and Transport Depot	1929 Gladstone-Mount Larcom Road MOUNT LARCOM QLD 4695	10/4/2012
DA/593/2012	Multiple Unit Residential (5 Town Houses)	9 Vincent Street WEST GLADSTONE QLD 4680	11/4/2012
DA/594/2012	Multiple Unit Residential (6 Units), Medical Centre & Offices	5 Booth Avenue TANNUM SANDS QLD 4680	11/4/2012
DA/595/2012	Accommodation Building (Motel), Caravan & Cabin Accommodation, Catering Premises, Shop, Indoor & Outdoor Recreation, Conference Room, Maintenance & Service Buildings in Two Stages	Lot 4 RP 897424, Captain Cook Drive AGNES WATER QLD 4677	11/4/2012
DA/597/2012	Multiple Unit Residential (4 Units)	133 Toolooa Street SOUTH GLADSTONE QLD 4680	18/4/2012
DA/599/2012	Stage 3 (28 Lots)	15 Mingara Crescent CALLIOPE QLD 4680	16/4/2012
DA/600/2012	Multiple Unit Residential (6 Units)	4 Norton Lane WEST GLADSTONE QLD 4680	23/4/2012
DA/601/2012	Multiple Unit Residential (5 Units)	214 Oaka Street SOUTH GLADSTONE QLD 4680	23/4/2012
DA/602/2012	Educational Establishment (Industrial Training Facility)	17 South Trees Drive SOUTH TREES QLD 4680	23/4/2012
DA/604/2012	Multiple Dwelling (5 Units) & Commercial Premises	4 Jeffery Court AGNES WATER QLD 4677	26/4/2012
DA/605/2012	Multiple Unit Residential (45 Units)	97 Auckland Street GLADSTONE QLD 4680	30/4/2012

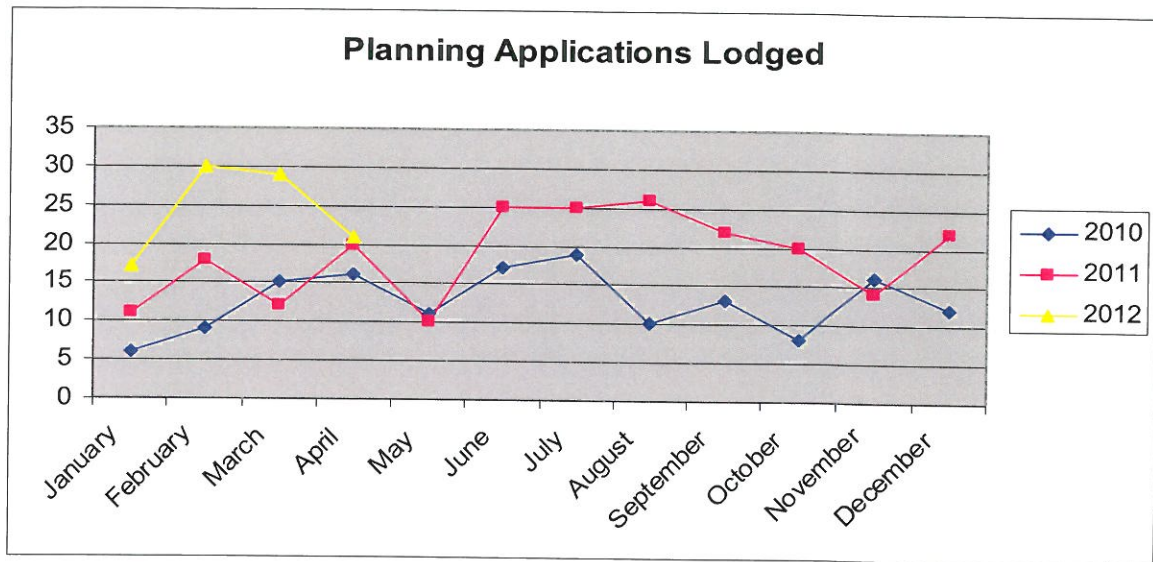
PLANNING - DELEGATED DECISIONS – APRIL 2012

Application No.	Development	Location	Decision Date
DA/537/2012	Reconfiguring a Lot (1 into 2)	Lot 22 SP 223995, Laird Road BOYNE VALLEY QLD 4680	24/4/2012
DA/542/2012	Access Easement	101 Calliope River Road WEST STOWE QLD 4680	13/4/2012
DA/550/2012	Relatives Apartment	1 Terina Court CALLIOPE QLD 4680	18/4/2012
DA/575/2012	Relative's Apartment	13 Lincoln James Drive BURUA QLD 4680	23/4/2012
DA/477/2012	Relative's Apartment	82 Awoonga Dam Road, BENARABY QLD 4680	5/4/2012
DA/448/2012	Multiple Dwelling (3 Units)	1 The Promenade, AGNES WATER QLD 4677	30/4/2012

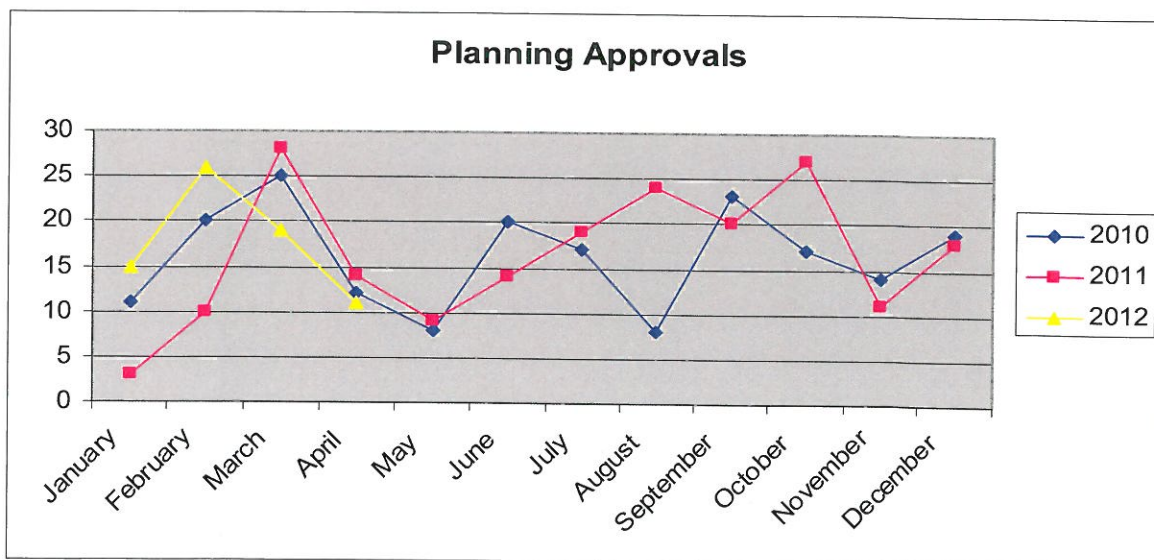
PLANNING - COUNCIL DECISION – April 2012

Application No.	Development	Location	Decision Date
DA/469/2011	Material Change of Use (Small Lot Housing) & Reconfiguring a Lot (1 into 32)	33 Bradford Road TELINA QLD 4680	17/4/2012
DA/485/2011	Extension to Storage Depot (58 additional Self Storage Units)	4 Shaw Street NEW AUCKLAND QLD 4680	17/4/2012
DA/288/2011	Preliminary Approval - Material Change of Use - Impact - Aged Persons Accommodation (Retirement Village - 144 units)	75 & 105 Tannum Sands Road, Tannum Sands QLD 4680	17/4/2012
DA/514/2012	Workers Accommodation	76 Adelaide Street, SOUTH GLADSTONE QLD 4680	17/4/2012
DA/468/2012	Multiple Unit Residential (11 Units)	39 Scenery Street, WEST GLADSTONE QLD 4680	17/4/2012

PLANNING APPLICATIONS LODGED 2010-2012



PLANNING APPLICATION APPROVALS 2010-2012



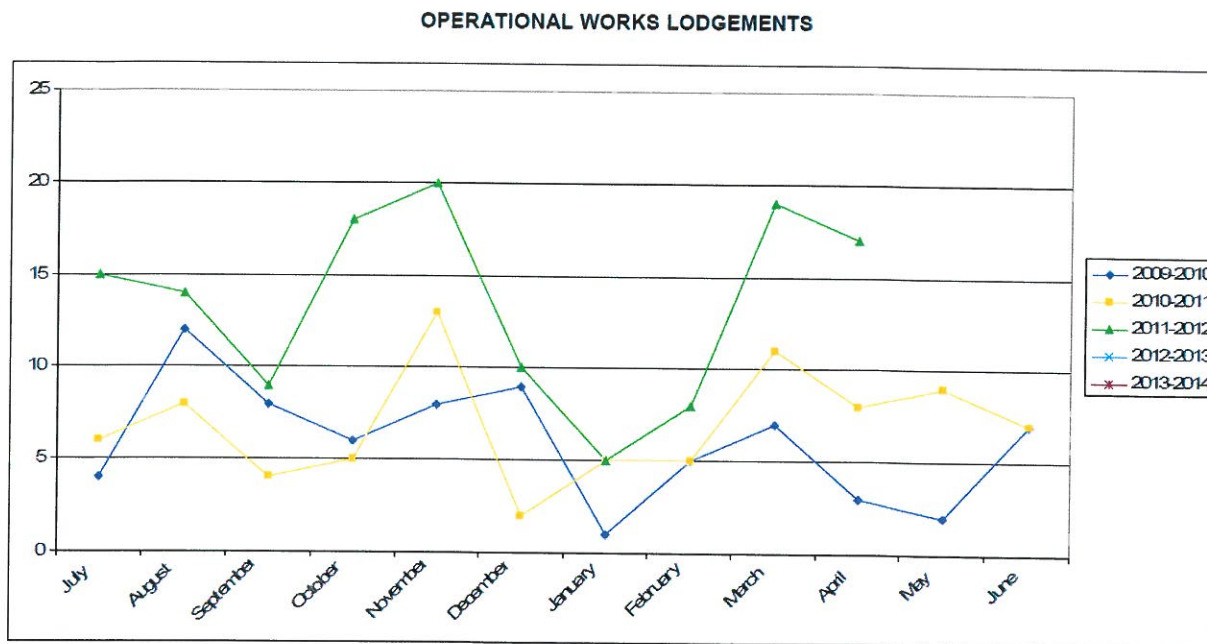
OPERATIONAL WORKS - NEW APPLICATIONS LODGED - APRIL 2012

Application No.	Development	Location	Date Lodged
COMASS/11/2012	Compliance Assessment - Stormwater	47 Harbour Terrace GLADSTONE QLD 4680	27/4/2012
OPW/292/2012	Stormwater & Earthworks	2 Boowan Court CALLEMONTDAH QLD 4680	30/4/2012
OPW/286/2012	Landscaping	60 Findling Road BOYNE ISLAND QLD 4680	23/4/2012
OPW/287/2012	Road Works, Stormwater and Earthworks	17 Dalrymple Drive TOOLOOA QLD 4680	23/4/2012
OPW/288/2012	Stormwater, Earthworks and Sewerage Infrastructure	3 Jenny Lind Court BOYNE ISLAND QLD 4680	23/4/2012
OPW/289/2012	Stormwater, Drainage, Sewerage Infrastructure & Landscaping	216 Oaka Street SOUTH GLADSTONE QLD 4680	23/4/2012
OPW/290/2012	Road Works, Drainage Works, Earthworks and Other	104 Central Lane GLADSTONE QLD 4680	24/4/2012
OPW/291/2012	Stormwater, earthworks and sewerage infrastructure.	15 Mingara Crescent CALLIOPE QLD 4680	24/4/2012
OPW/277/2012	Stormwater, Drainage Works & Sewerage Works	55 Toolooa Street SOUTH GLADSTONE QLD 4680	3/4/2012
OPW/278/2012	Stormwater, Drainage Works & Landscaping	42 Bensted Road CALLEMONTDAH QLD 4680	4/4/2012
OPW/279/2012	Stormwater & Landscaping	12 Leonard Street SOUTH GLADSTONE QLD 4680	12/4/2012
OPW/280/2012	Stormwater, Earthworks and Landscaping	8 Goondoon Street GLADSTONE QLD 4680	12/4/2012
OPW/282/2012	Other - Retaining Wall	13 Namadgi Terrace NEW AUCKLAND QLD 4680	12/4/2012
OPW/283/2012	Road Works, Stormwater, Water Infrastructure, Drainage Works, Sewerage Infrastructure and Other	60 Findling Road BOYNE ISLAND QLD 4680	13/4/2012
OPW/284/2012	Sewerage Infrastructure	104 Central Lane GLADSTONE QLD 4680	16/4/2012
OPW/285/2012	Landscaping	60 Findling Road BOYNE ISLAND QLD 4680	17/4/2012
OPW/281/2012	Earthworks	60 Findling Road BOYNE ISLAND QLD 4680	12/4/2012

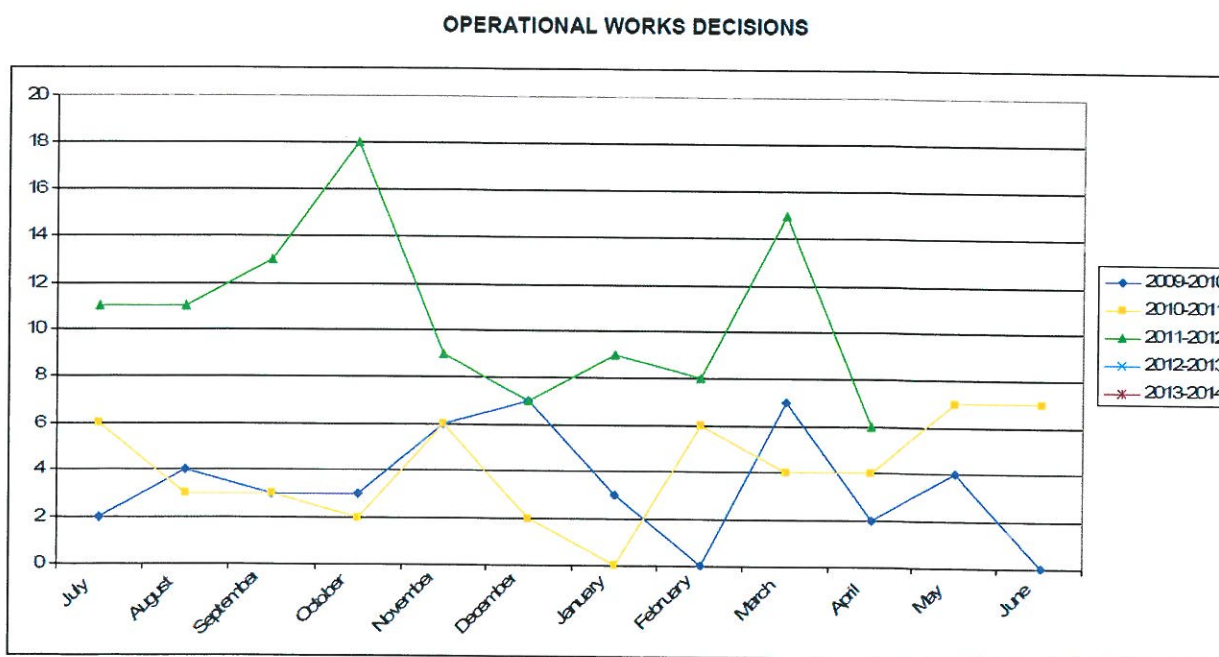
OPERATIONAL WORKS - DELEGATED DECISIONS - APRIL 2012

Application No.	Development	Location	Decision Date
OPW/256/2012	Drainage Works & Water Infrastructure	5 & 17 Wyndham Road BEECHER QLD 4680	18/4/2012
OPW/205/2011	Roadworks, Stormwater, Drainage Works, Water & Sewerage Infrastructure	Lot 201 SP 242764, Kirkwood Road O'CONNELL QLD 4680	16/4/2012
OPW/206/2011	Earthworks	Lot 201 SP 242764, Kirkwood Road O'CONNELL QLD 4680	11/4/2012
OPW/199/2011	Roadworks, Drainage, Landscaping, Stormwater, Earthworks, Water Infrastructure & Sewerage Infrastructure	Lot 93 & 95 SP 140240, Don Young Drive & 7 Don Young Drive BYELLE QLD 4680	27/4/2012
OPW/226/2011	Roadworks, Stormwater, Drainage Works, Water & Sewerage Infrastructure	31 John Dory Drive TOOLOOA QLD 4680	10/4/2012
OPW/281/2012	Earthworks	60 Findling Road BOYNE ISLAND QLD 4680	27/4/2012

OPERATIONAL WORKS LODGEMENT 2009-2012

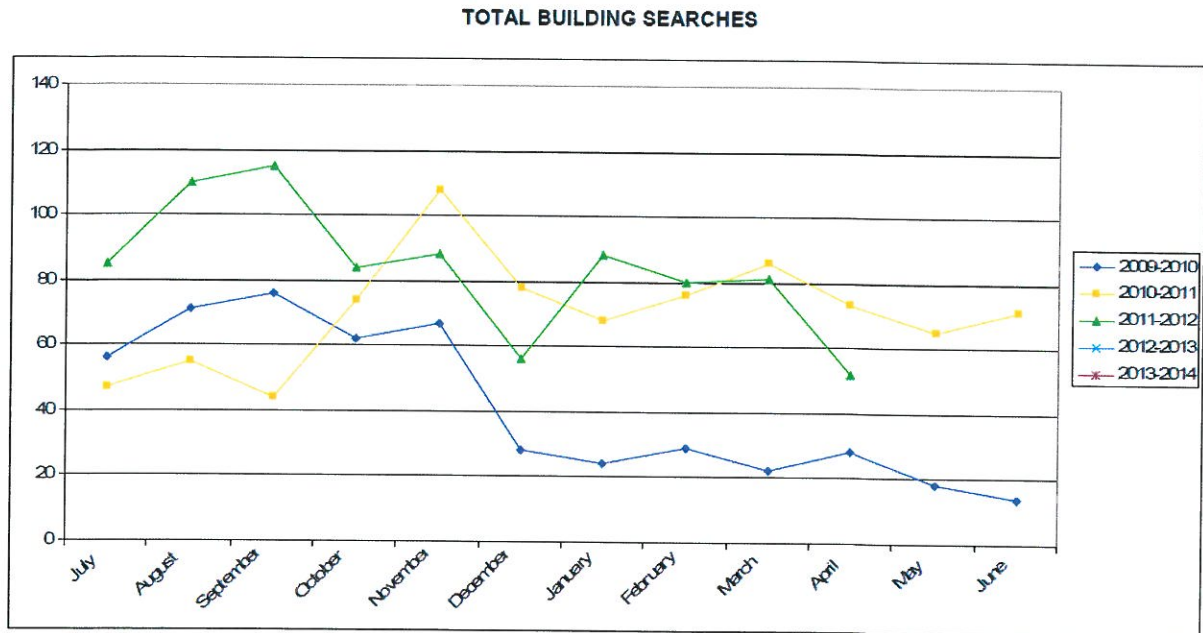


OPERATIONAL DECISIONS 2009-2012

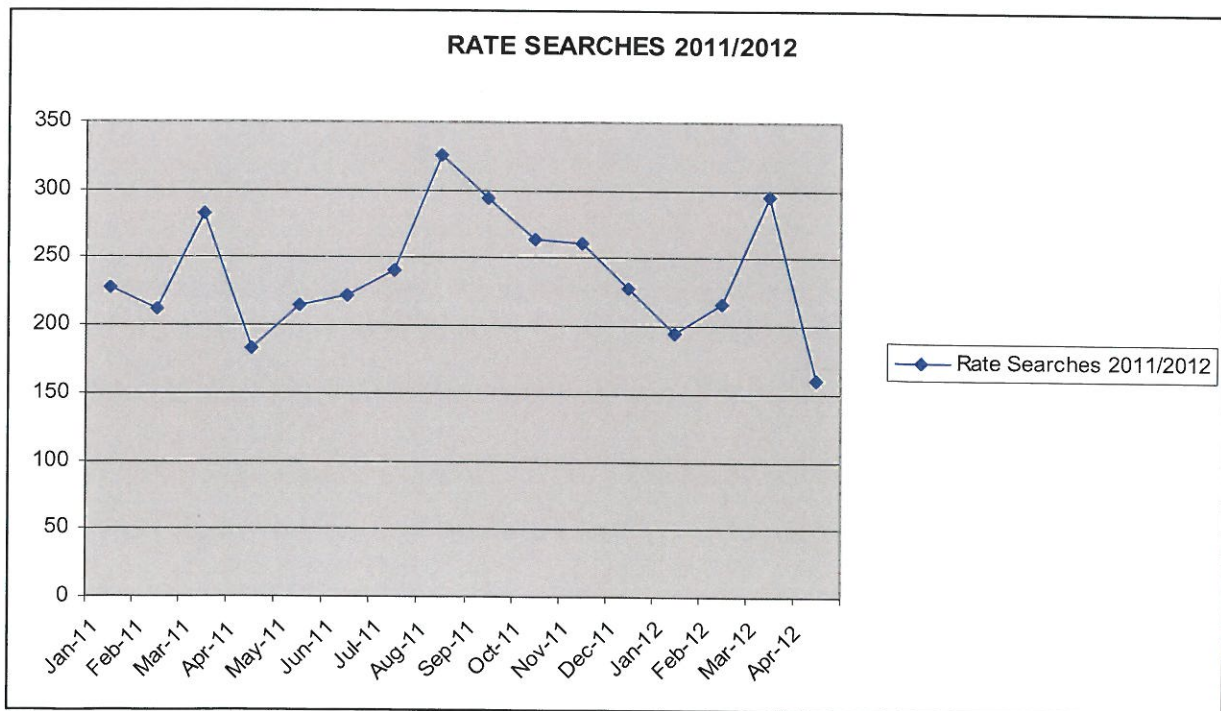


BUILDING SECTION STATISTICS

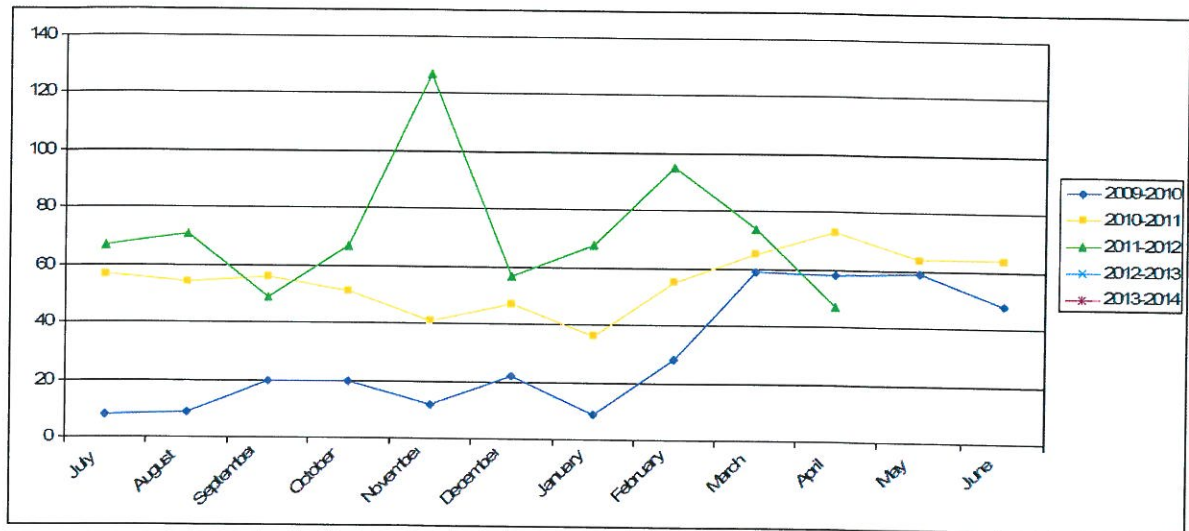
BUILDING SEARCHES CONDUCTED 2009-2012



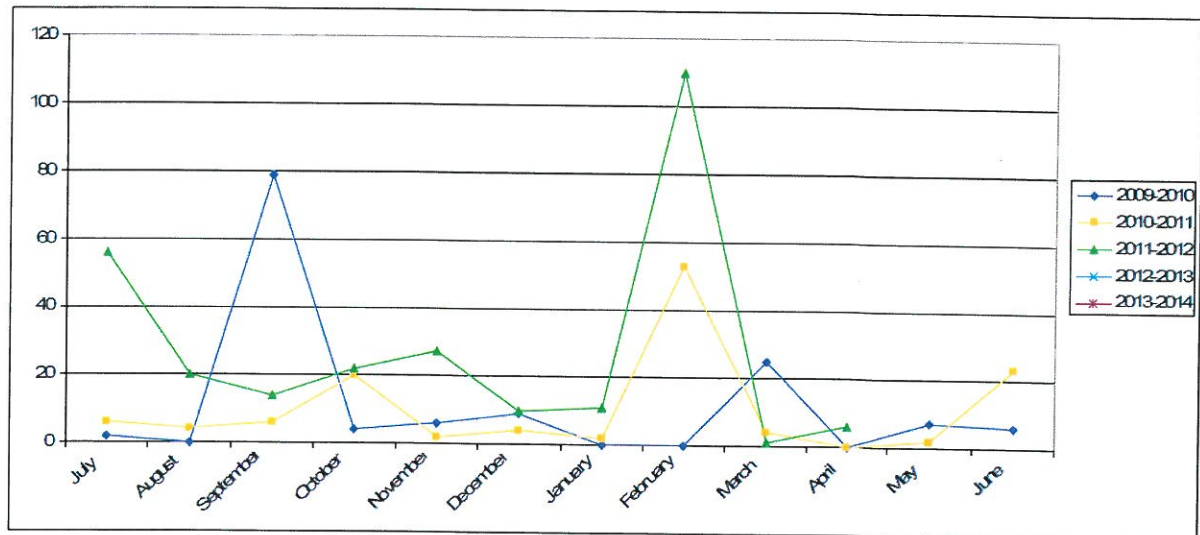
RATES SEARCHES 2011/2012



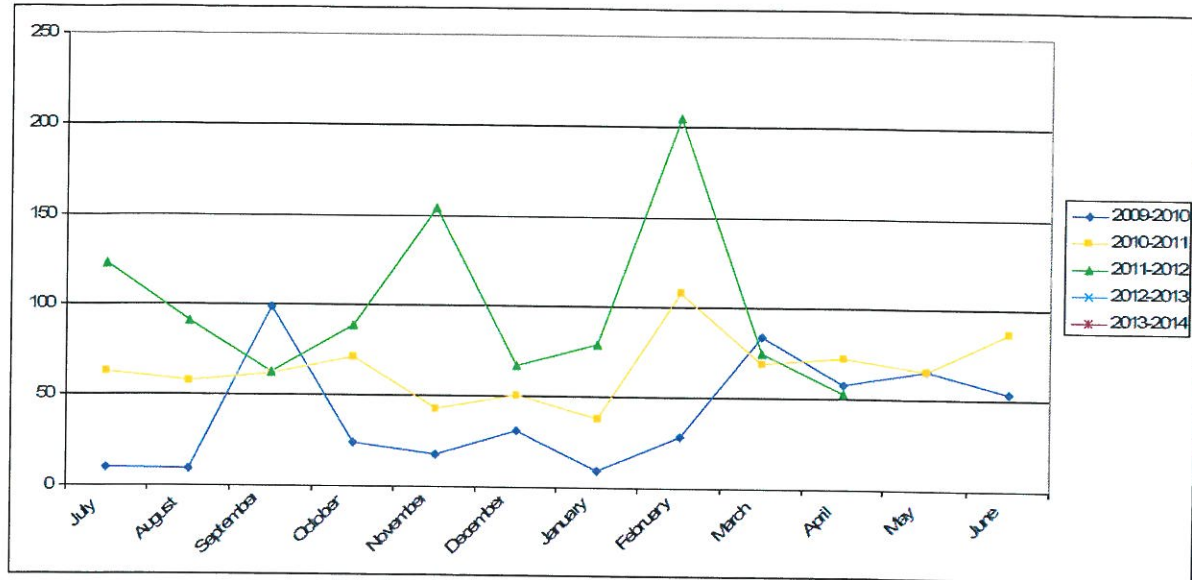
TOTAL DWELLING APPROVALS



TOTAL UNIT/DUPLEX APPROVALS (NO. OF UNITS)

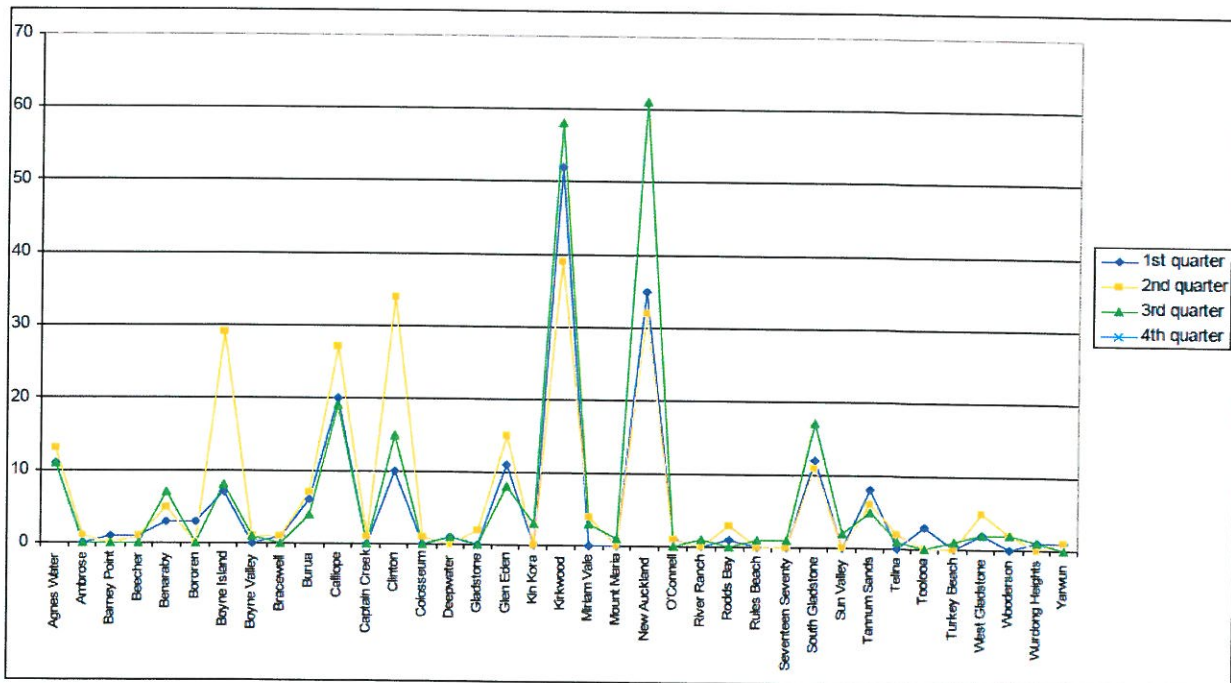


TOTAL HOUSING UNIT APPROVALS (DWELLING, DUPLEX, UNITS)

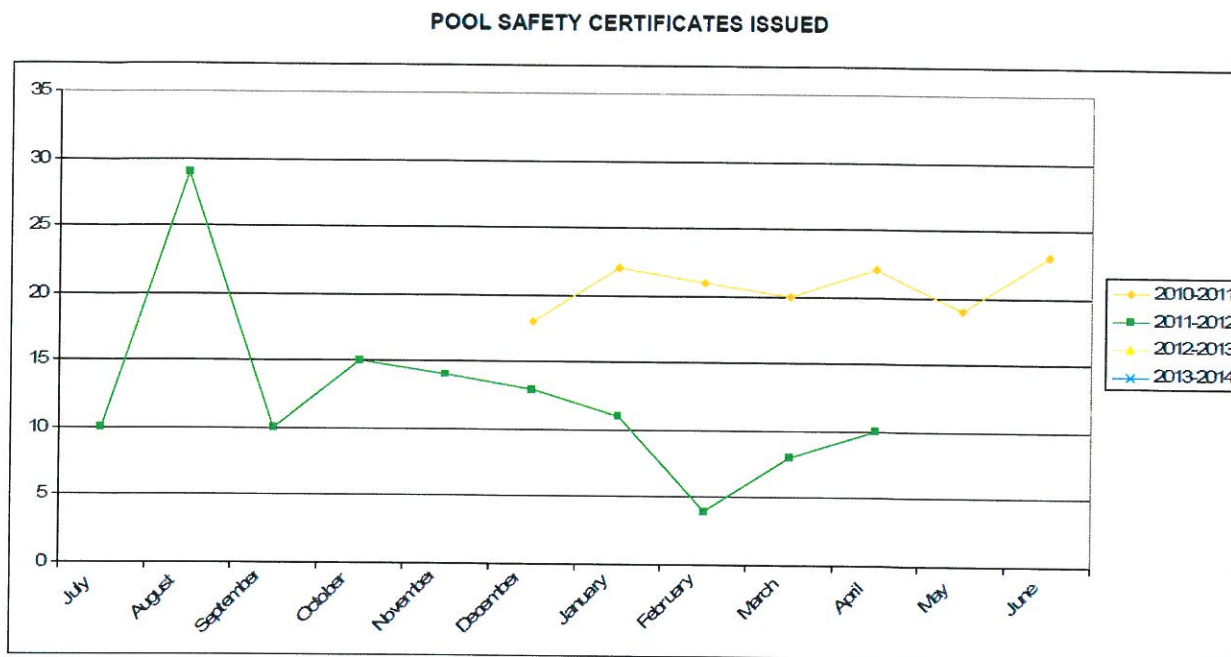


DWELLING APPROVALS BY SUBURB

Year to Date = 669



BUILDING & PLUMBING – POOL SAFETY CERTIFICATES ISSUED



BUILDING & PLUMBING – BUILDING & PLUMBING INSPECTIONS

