



Development Services

Subject: DEVELOPMENT STATISTICS – FEBRUARY 2012

File Reference: DB10.2

The information below is provided for the month of February 2012 in the following areas:-

- New planning applications lodged
- Delegated planning approvals
- Council planning approvals
- Graph Showing Planning Lodgements & Approvals
- New operational works applications lodged
- Delegated Operational works approvals
- Graph Showing Operational Works Lodgements & Approvals
- Graph showing Building Searches completed for 2009-2012
- Graph showing Rate Searches completed 2010/2011/2012
- Graph showing New Dwelling Approval Comparison for 2009-2012
- Graph showing New Dwelling Approvals broken down into LG area.
- Graph showing Pool Safety Certificates Issued
- Graph showing Building & Plumbing Inspections conducted

PLANNING - NEW APPLICATIONS LODGED – FEBRUARY 2012

Application No.	Development	Location	Date Lodged
DA/519/2012	Reconfiguring a Lot (1 into 4)	Lot 41 SP 228188, Unnamed Road WURDONG HEIGHTS QLD 4680	2/02/2012
DA/520/2012	Boundary Realignment (2 into 2)	30 Christensen Road & 239 Dude Ranch Road IVERAGH QLD 4680	2/02/2012
DA/521/2012	Business (Office)	8/100 Goondoon Street GLADSTONE QLD 4680	2/02/2012
DA/522/2012	Caravan and Relocatable Home Park (140 Sites)	75 Racecourse Road CALLIOPE QLD 4680	2/02/2012
DA/523/2012	Relatives Apartment	187 Auckland Street SOUTH GLADSTONE QLD 4680	2/02/2012
DA/524/2012	Extension to Existing Showroom	36 Far Street WEST GLADSTONE QLD 4680	6/02/2012

DA/525/2012	Small Lot Housing and Reconfiguring a Lot (1 into 2)	1 Telopea Place KIRKWOOD QLD 4680	7/02/2012
DA/526/2012	Office (Business)	93 Goondoon Street GLADSTONE QLD 4680	7/02/2012
DA/527/2012	Multiple Unit Residential (24 Dwelling Units) (Stage One Only)	43 - 49 Yarroon Street & 26 Hanson Road GLADSTONE QLD 4680	7/02/2012
DA/528/2012	Open Space & Recreation - Extension to Fitness Centre & Equipment Shed	26 Bell Street & 20 O'Connell BARNEY POINT QLD 4680	9/02/2012
DA/529/2012	Boundary Realignment (2 into 2)	Lot 900 SP 190798, Glen Eden Drive GLEN EDEN QLD 4680	10/02/2012
DA/530/2012	Relatives Apartment	Lot 718 SP 246142, Jim Whyte Way BURUA QLD 4680	13/02/2012
DA/531/2012	Boundary Realignment (2 into 2)	6-10 Boys Road SOUTH TREES QLD 4680	13/02/2012
DA/532/2012	48352 Bruce Highway IVERAGH QLD 4680	Reconfiguring a Lot (3 into 4)	14/2/2012
DA/533/2012	Medical Centre (Dental Surgery)	15 Drynan Drive CALLIOPE QLD 4680	15/2/2012
DA/534/2012	Shopping Centre- Staged Redevelopment & Expansion	75 Dawson Highway NEW AUCKLAND QLD 4680	15/2/2012
DA/535/2012	Boundary Realignment (2 into 2)	16 Cressbrook Street & 9 Wuruma Court CLINTON QLD 4680	15/02/2012
DA/537/2012	Reconfiguring a Lot (1 into 2)	Lot 22 SP 223995, Laird Road BOYNE VALLEY QLD 4680	17/2/2012
DA/538/2012	Duplex Unit	25 Telopea Place KIRKWOOD QLD 4680	17/2/2012
DA/539/2012	LNG Loading Platform Including Access Jetty & Associated Walkways	Lot 3 SP 228186 & Lot 3 SP 228454, Curtis Unnamed Road CURTIS ISLAND QLD 4680	17/2/2012
DA/540/2012	Duplex Unit	10 Telopea Place KIRKWOOD QLD 4680	17/02/2012
DA/541/2012	Multiple Unit Residential (52 Units)	Lot 507 SP 240771, Daintree Boulevard NEW AUCKLAND QLD 4680	20/2/2012
DA/542/2012	101 Calliope River Road WEST STOWE QLD 4680	Access Easement	21/2/2012
DA/543/2012	12 Orchard Drive KIRKWOOD QLD 4680	Duplex Unit	21/2/2012

DA/544/2012	261 Auckland Street SOUTH GLADSTONE QLD 4680	Multiple Unit Residential (3 Units)	21/2/2012
DA/545/2012	15 Rollo Street GLADSTONE QLD 4680	Warehouse, Office & Multiple Unit Residential (12 Units)	22/2/2012
DA/546/2012	820 Targinie Road TARGINIE QLD 4694	Pipeline and Associated Temporary Infrastructure for the Narrows Bundled Crossing Components of the QCLNG & APLNG Projects	24/2/2012
DA/547/2012	19 Parsloe Street TELINA QLD 4680	Reconfiguring a Lot (1 into 2)	28/2/2012
DA/548/2012	16 Ashton Street TELINA QLD 4680	Reconfiguring a Lot (2 into 3)	28/2/2012
DA/549/2012	31-37 Glenlyon Street & 26 Hanson Road GLADSTONE QLD 4680	Food Premises (Business)	29/2/2012

PLANNING - DELEGATED DECISIONS – FEBRUARY 2012

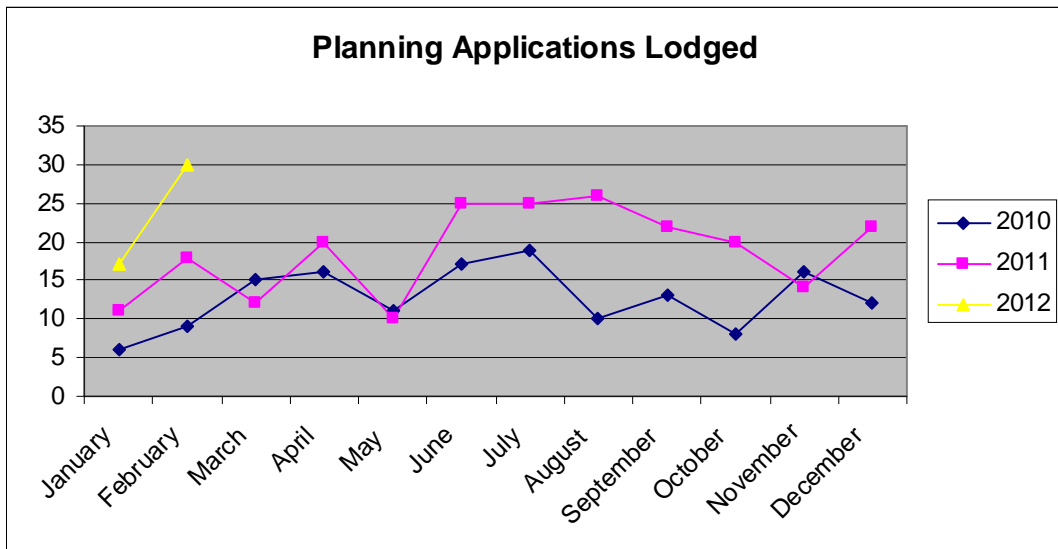
Application No.	Development	Location	Decision Date
DA/464/2011	Boundary Realignment (2 into 2)	50148 Bruce Highway CALLIOPE QLD 4680	1/2/2012
DA/465/2011	Extension to Medical Centre	2041 Dawson Highway CALLIOPE QLD 4680	1/2/2012
DA/499/2011	Dwelling House	Lot 71 SP 150901, Sunrise Close AGNES WATER QLD 4677	6/2/2012
DA/446/2011	Additional Tourist Cabins (4) & Caretaker's Residence	754 Fingerfield Road DEEPWATER QLD 4674	7/2/2012
DA/479/2011	Prescribed Tidal Works Including the Disturbance of Marine Plants for Temporary Reverse Osmosis, Sewerage Treatment Plant and Sea Water Intake and Outfall Infrastructure	Lot 2 SP 228454, Unnamed Road CURTIS ISLAND QLD 4680	7/2/2012
DA/481/2011	Reconfiguring a Lot (2 into 4)	125 Taylor Lane MACHINE CREEK QLD 4695	9/2/2012
DA/443/2011	Workers Accommodation (55 Units)	1906 Dawson Highway CALLIOPE QLD 4680	22/2/2012
DA/502/2012	Vehicle and Machinery Sales and Hire (Industry (Low Impact))	40 Callemondah Drive CLINTON QLD 4680	23/2/2012
DA/517/2012	Boundary Realignment (3 into 3)	30 Zwisler Road & 84 Dalga Road BOYNE VALLEY QLD 4680	23/2/2012
DA/359/2011	Prescribed Tidal Works - Pipeline and associated temporary infrastructure required as part of the The Narrows Bundled Crossing component of the QCLNG Project	Lot 4 SP 235007, Unnamed Road CURTIS ISLAND QLD 4680	24/2/2012

	(Eastern Section)		
DA/466/2011	Dual Occupancy	16 Waterfront Drive, AGNES WATER QLD 4677	27/2/2012
DA/480/2011	Reconfiguring a Lot 3 into 4	Lot 13 FD 31, Bruce Highway BOROREN QLD 4678	28/02/2012

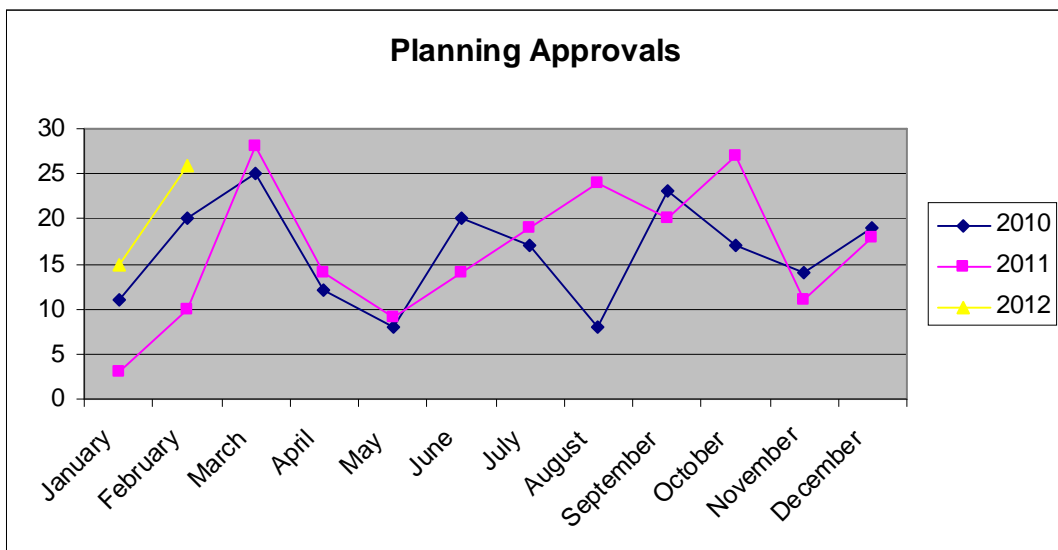
PLANNING - COUNCIL DECISION – FEBRUARY 2012

Application No.	Development	Location	Decision Date
DA/450/2011	Multiple Unit Residential (30 Units)	6 Harvey Road, CLINTON QLD 4680	7/02/2012
DA/374/2011	Office	Lot 10 CTN 1208, Breslin Street WEST GLADSTONE QLD 4680	7/02/2012
DA/451/2011	Multiple Unit Residential (3 units)	58 Off Lane SOUTH GLADSTONE QLD 4680	7/02/2012
DA/457/2011	Duplex	6 Walnut Street NEW AUCKLAND QLD 4680	7/02/2012
DA/349/2011	Contractors Depot (Set down area)	53887 Bruce Highway & 980 Popenia Road MACHINE CREEK QLD 4680	7/02/2012
DA/441/2011	Residential Subdivision and Reconfiguration of a Lot (1 into 6) Over 2 Stages	41 McLeod Street BOYNE ISLAND QLD 4680	7/02/2012
DA/427/2011	Material Change of Use (Small Lot Housing) & Reconfiguring a Lot (1 into 2)	3 Jenny Lind Court BOYNE ISLAND QLD 4680	7/02/2012
DA/425/2011	Multiple Unit Residential (42 Townhouses)	Lot 902 SP 221488, Glen Eden Drive GLEN EDEN QLD 4680	7/02/2012
DA/437/2011	Duplex Unit	28 Flounder Crescent TOOLOOA QLD 4680	7/02/2012
DA/334/2011	Reconfiguration of a Lot (1 into 2)	2 Anson Close TOOLOOA QLD 4680	7/02/2012
DA/474/2011	Duplex Unit	17 Koowin Drive KIRKWOOD QLD 4680	21/02/2012
DA/453/2011	Shop and Offices	20 - 22 Herbert Street GLADSTONE QLD 4680	21/02/2012
DA/371/2011	Residential Subdvision Stages 8, 9 & 10 & Reconfiguring a Lot (1 into 138)	Lot 507 SP 240771, Daintree Boulevard NEW AUCKLAND QLD 4680	21/02/2012
DA/402/2011	Stage 7 Residential Subdivision & Reconfiguring a Lot (1 into 46, Plus 1- Park Lot & Balance Lot)	Lot 507 SP 240771, Daintree Boulevard NEW AUCKLAND QLD 4680	21/02/2012

PLANNING APPLICATIONS LODGED 2010-2012



PLANNING APPLICATION APPROVALS 2010-2012



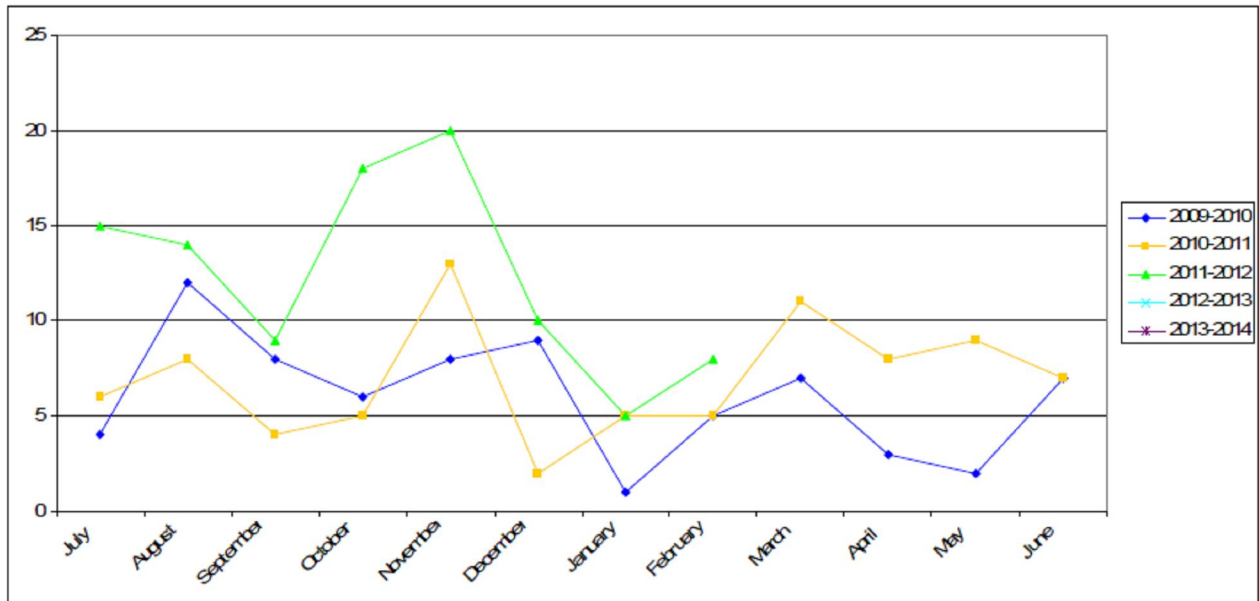
OPERATIONAL WORKS - NEW APPLICATIONS LODGED - FEBRUARY 2012

Application No.	Development	Location	Date Lodged
OPW/248/2012	Road Works, Stormwater, Drainage Works, Earthworks & Sewerage Infrastructure	Lot 1 SP 207635, Dean Street GLEN EDEN QLD 4680	2/2/2012
OPW/249/2012	Sewerage Infrastructure	Pt(zz) Lot 210 SP 120888, Bryan Jordan Drive CALLEMONDAH QLD 4680	2/2/2012
OPW/250/2012	Road Works, Stormwater, Water Infrastructure, Earthworks, Sewerage Infrastructure and Landscaping	127 Toolooa Street SOUTH GLADSTONE QLD 4680	6/2/2012
OPW/251/2012	Roadworks, Stormwater, Drainage Works, Water & Sewerage Infrastructure	17 Amelia Street WEST GLADSTONE QLD	8/2/2012
OPW/252/2012	Roadworks, drainage works, stormwater, earthworks, water infrastructure, sewerage infrastructure & clearing vegetation under the planning scheme.	11 John Dory Drive TOOLOOA QLD 4680	10/2/2012
OPW/253/2012	Roadworks, drainage works, stormwater, earthworks, signage, water infrastructure, sewerage infrastructure.	Lot 101 RP 836843, Tarrawonga Drive CALLIOPE QLD 4680	10/2/2012
OPW/254/2012	Road works, stormwater, drainage works, earthworks, sewerage infrastructure & landscaping.	52 Oaka Lane GLADSTONE QLD 4680	14/2/2012
OPW/255/2012	Earthworks	Lot 3 SP 188635, Kirkwood Road KIRKWOOD QLD 4680	21/2/2012
OPW/256/2012	Drainage Works & Water Infrastructure	5 & 17 Wyndham Road BEECHER QLD 4680	28/2/2012
OPW/257/2012	Stormwater, water infrastructure, drainage works, earthworks & sewerage infrastructure.	2 Anson Close TOOLOOA QLD 4680	28/2/2012

OPERATIONAL WORKS - DELEGATED DECISIONS - FEBRUARY 2012

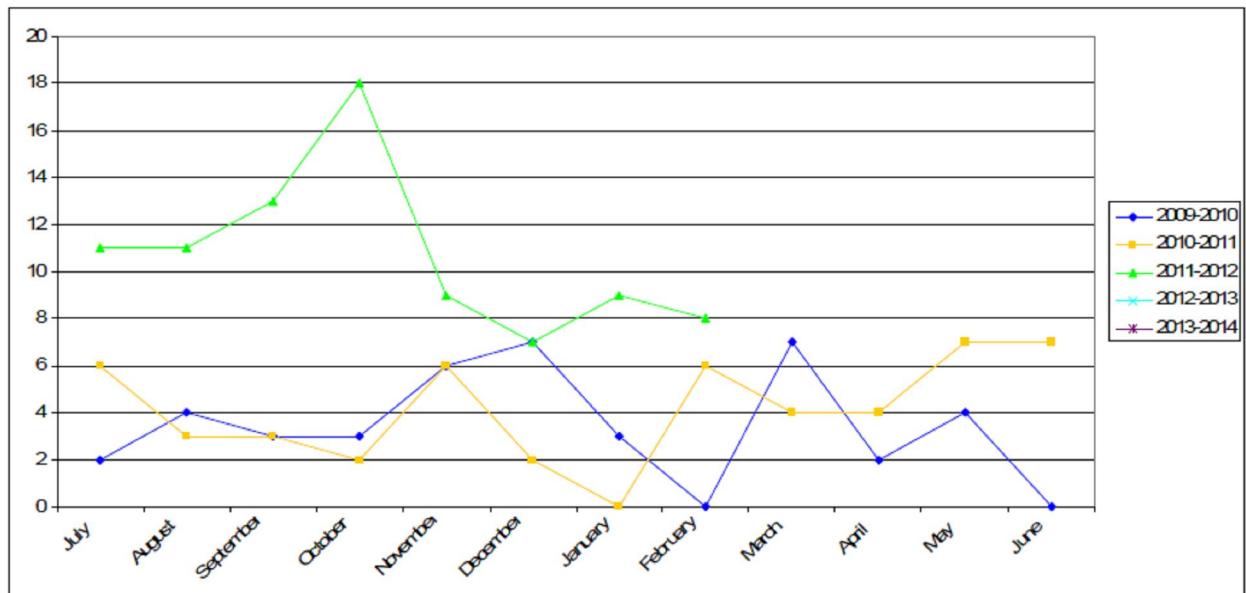
Application No.	Development	Location	Decision Date
OPW/187/2011	Roadworks, Stormwater, Drainage Works & Earthworks	43 Hibiscus Avenue KIN KORA QLD 4680	17/02/2012
OPW/189/2011	Roadworks, Stormwater, Drainage Works, Earthworks, Landscaping, Signage, Clearing Vegetation, Water & Sewerage Infrastructure	Lot 900 SP 190798, Glen Eden Drive GLEN EDEN QLD 4680	3/2/2012
OPW/204/2011	Sewerage Infrastructure	Lot 1 RP 906248, Kirkwood Road. 8 Johnson Street & 803 Glenlyon Road GLEN EDEN QLD 4680	1/2/2012
OPW/210/2011	Stormwater, Drainage Works, Earthworks, Footpath, Driveway & Car Parking	14 Short Street SOUTH GLADSTONE QLD 4680	6/2/2012
OPW/218/2011	Roadworks, Stormwater, Drainage Works, Earthworks, Signage, Clearing Vegetation, Water & Sewerage Infrastructure	Lot 901 SP 221484, Auckland	7/2/2012
OPW/223/2011	Roadworks, Stormwater, Drainage Works, Earthworks, Signage, Clearing Vegetation, Water & Sewerage Infrastructure	Lot 950 SP 246136, Kirkwood Road KIRKWOOD QLD 4680	23/2/2012

OPERATIONAL WORKS LODGEMENTS



OPERATIONAL DECISIONS 2009-2012

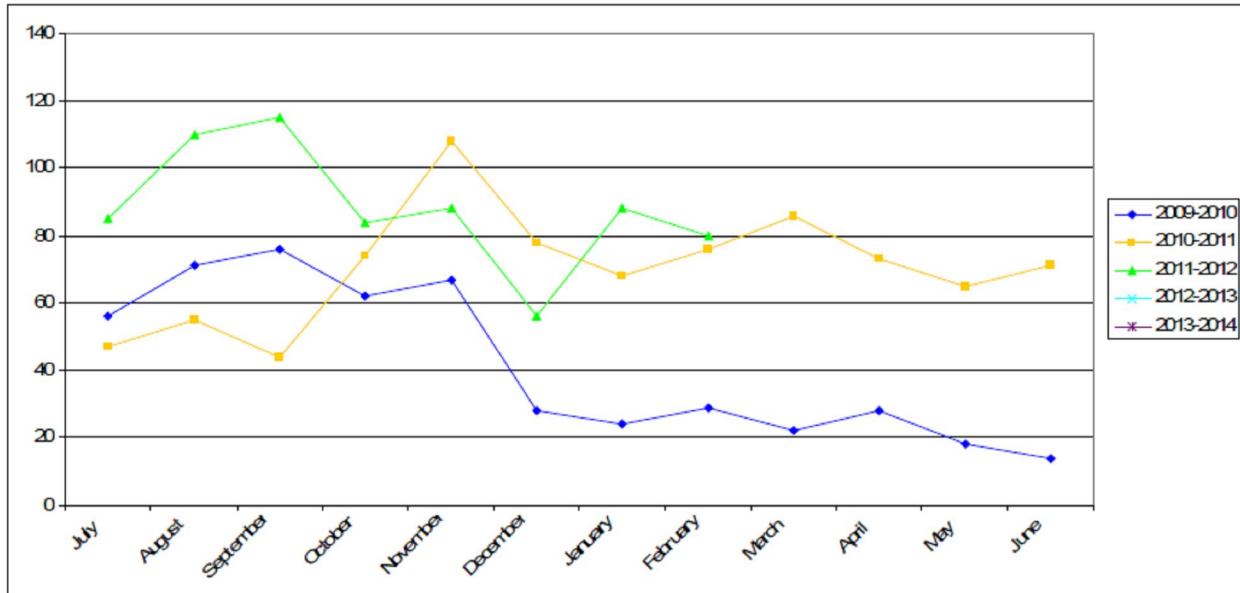
OPERATIONAL WORKS DECISIONS



BUILDING SECTION STATISTICS

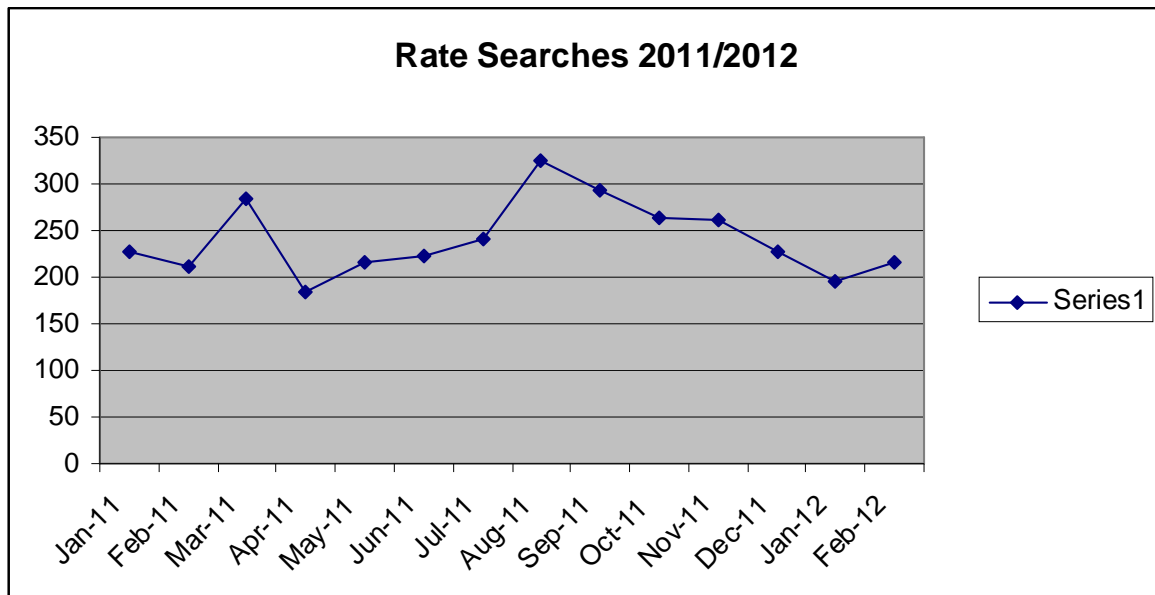
BUILDING SEARCHES CONDUCTED 2009-2012

TOTAL BUILDING SEARCHES

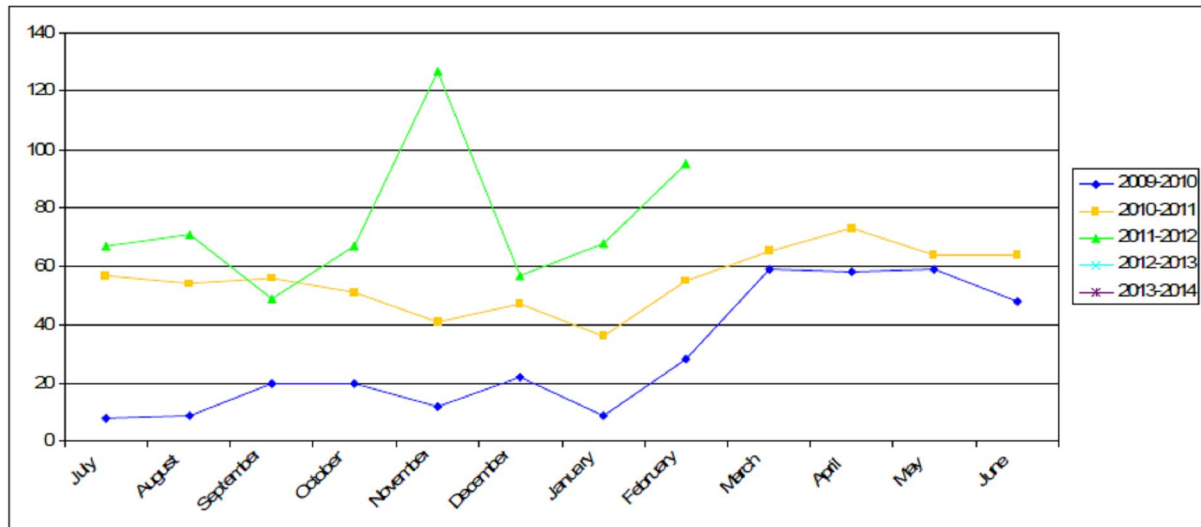


RATES SEARCHES 2011/2012

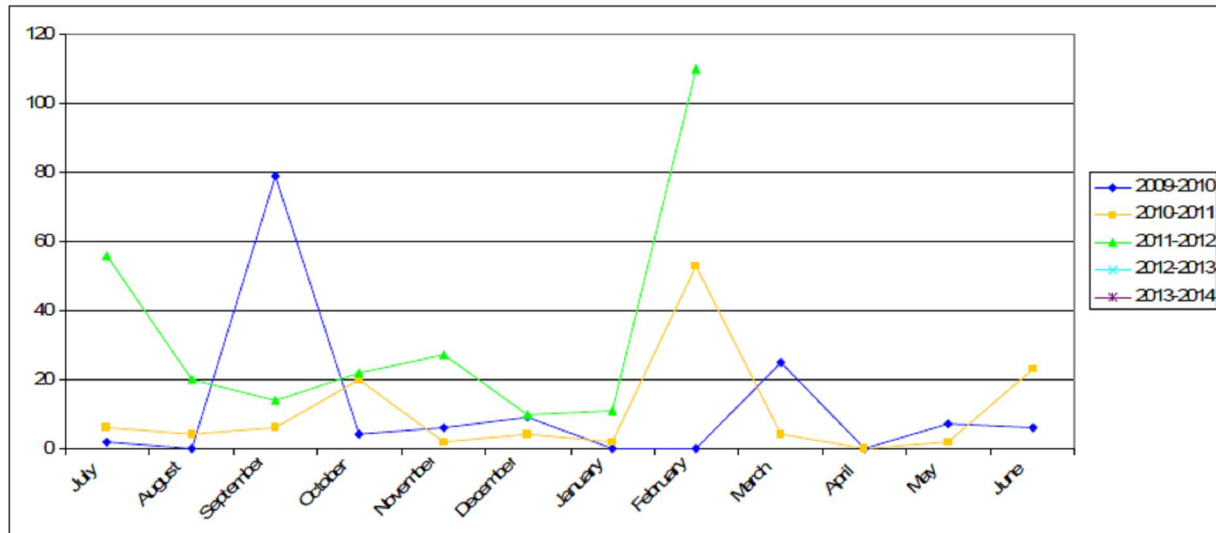
Rate Searches 2011/2012



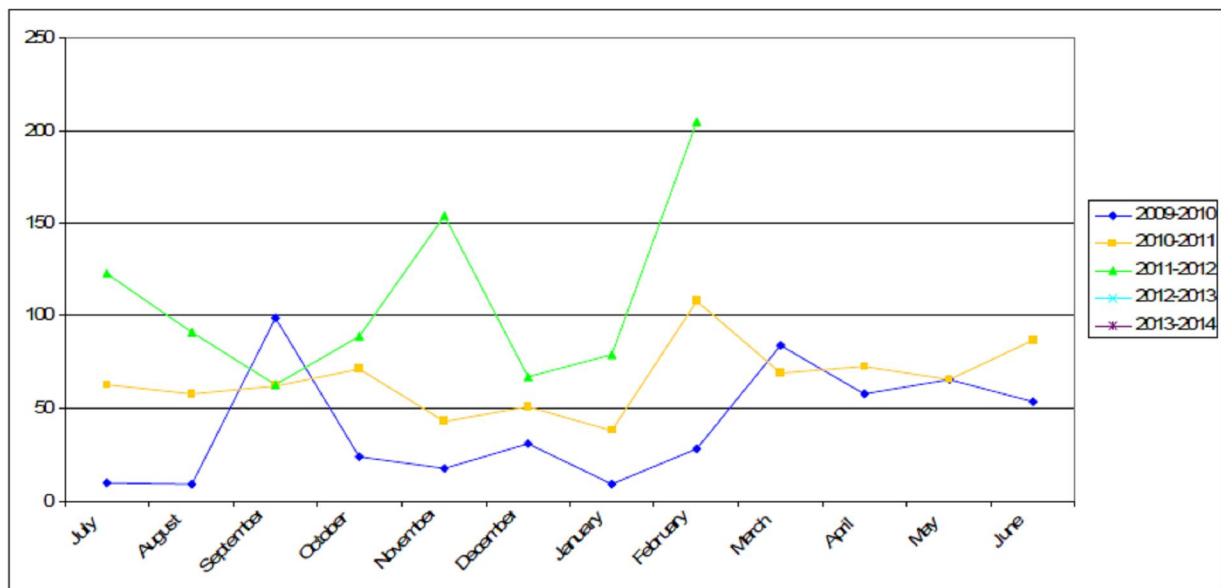
TOTAL DWELLING APPROVALS



TOTAL UNIT/DUPLEX APPROVALS (NO. OF UNITS)

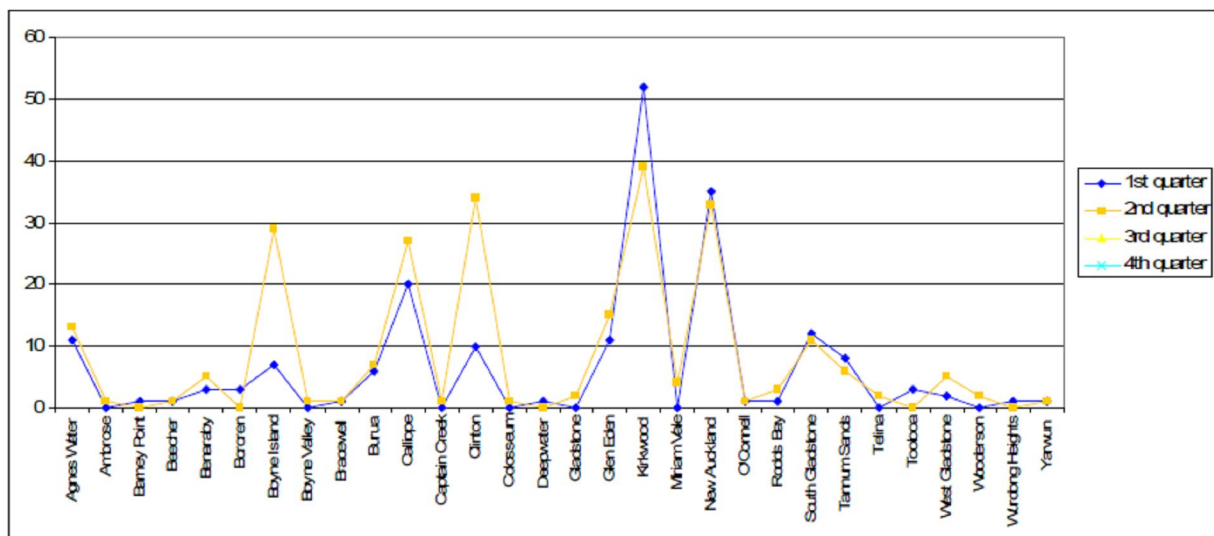


TOTAL HOUSING UNIT APPROVALS (DWELLING, DUPLEX, UNITS)

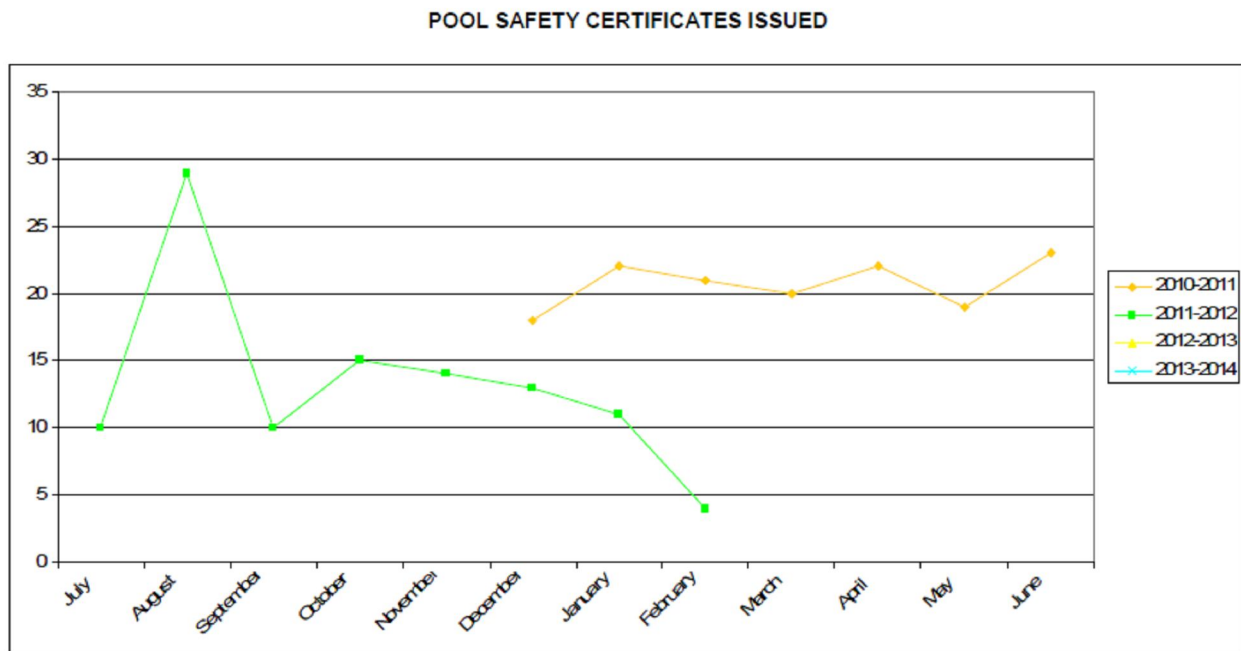


DWELLING APPROVALS BY SUBURB

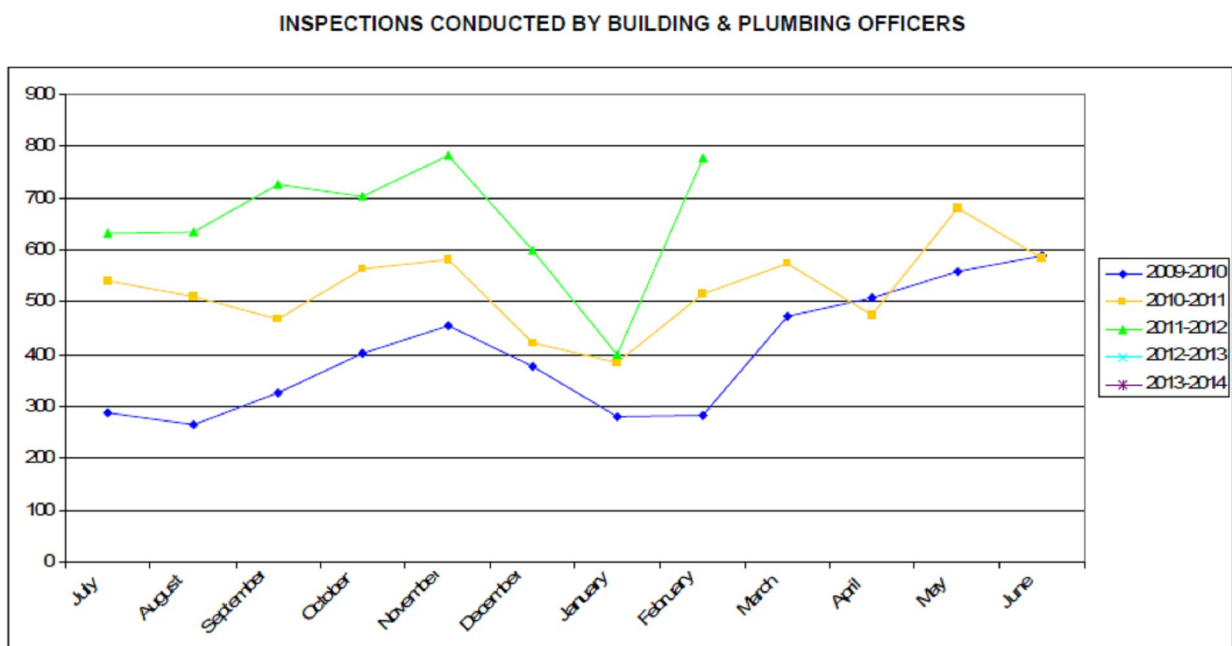
Year to Date = 436



BUILDING & PLUMBING – POOL SAFETY CERTIFICATES ISSUED



BUILDING & PLUMBING – BUILDING & PLUMBING INSPECTIONS



Jodie Clow
PA – Manager Development Assessment
5 March 2012