



**Development Services
Information to Councillors
13/2014**

Major Development Snapshot - June Quarter 2014

File Reference: DB10.2

The information below is provided for the March-June Quarter.

The information report contains a brief overview of major developments within the Gladstone region and has three sections:

1. Major developments currently under construction
2. Major developments with development approval (Town Planning) but not under construction
3. Major developments currently under development assessment (Town Planning)

SECTION 1: GLADSTONE - MAJOR DEVELOPMENTS UNDER CONSTRUCTION

RESIDENTIAL ESTATES

Vantage Estate – Kirkwood Road, KIRKWOOD

Stages 1,2,3,4 & 5 (177 Lots inc Balance Lots)	Construction Completed & Off Maintenance	DA/4480/2004 DA/8752/2007 DA/8753/2007 DA/10279/2008 OPW/9538/2007 OPW/73/2010 OPW/136/2011
Stage 6 (72 lots inc Balance Lots)	Construction Completed & On Maintenance 29 November 2012. Survey Plan Signed 20 September 2012.	DA/302/2011 OPW/172/2011 OPW/222/2011 OPW/304/2012
Stage 7A & 7B (46 Lots)	Construction Completed & On Maintenance 21 November 2012. Survey Plan Signed 20 September 2013.	DA/402/2011 OPW/308/2012 OPW/353/2012 OPW/365/2012 OPW/373/2012
Stage 9 (50 Lots)	Construction Completed & On Maintenance 17 October 2013.	DA/371/2011 OPW/361/2012 OPW/419/2012



Vantage Estate Stage 8 to 10 Approved Lot Layout

Little Creek Estate - Kirkwood Road, KIRKWOOD

Stages 1, 2, 3, 4A, 5, 8, 12, 13 and 14	Construction Completed & Off Maintenance Stage 5 Survey Plan Signed on 11 May 2012. Stage 1 Survey Plan signed on 7 December 2009. Stage 2 Survey Plan signed on 9 March 2010. Stage 3 Survey Plan signed on 3 March 2011. Stage 8 Survey Plan signed on 29 November 2011. Stage 4A Survey Plan signed on 29 November 2011. Stage 14 Survey Plan signed on 20 September 2013. Stage 13 Survey Plan signed on 14 June 2012. Stage 12 Survey Plan signed on 30 May 2012.	DA/6696/2005 DA/10280/2008 DA/10630/2008 DA/432/2011 OPW/11293/2008 OPW/128/2011 OPW/10592/2008 OPW/10671/2008 OPW/10947/2008 OPW/10886/2008 OPW/11349/2009 OPW/135/2011 OPW/156/2011 OPW/155/2011 OPW/181/2011 OPW/176/2011(On Maintenance) OPW/167/2011 OPW/173/2011 OPW/166/2011 OPW/175/2011(On Maintenance)
Stage 4B, 15A, 16A & 17A (Total 128 Lots)	Construction Completed & On Maintenance Stage 4B Survey Plan signed on 3 December 2013. Stage 15A Survey Plan signed on 21 December 2012. Stage 16 Survey Plan signed on 2 April 2013. Stage 17A Survey Plan signed 9 April 2013.	DA/6696/2005 DA/10280/2008 DA/10630/2008 DA/432/2011 OPW/318/2012 OPW/377/2012 OPW/376/2012 OPW/259/2012 OPW/223/2011 OPW/234/2011 OPW/235/2011 OPW/229/2011 OPW/231/2011 OPW/236/2011
Stage 6 (36 Lots)	Early stages of construction commenced.	DA/432/2011 OPW/317/2012 OPW/379/2012 OPW/378/2012



Little Creek Estate Stage 6

Forest Springs Estate - Kirkwood Road, KIRKWOOD

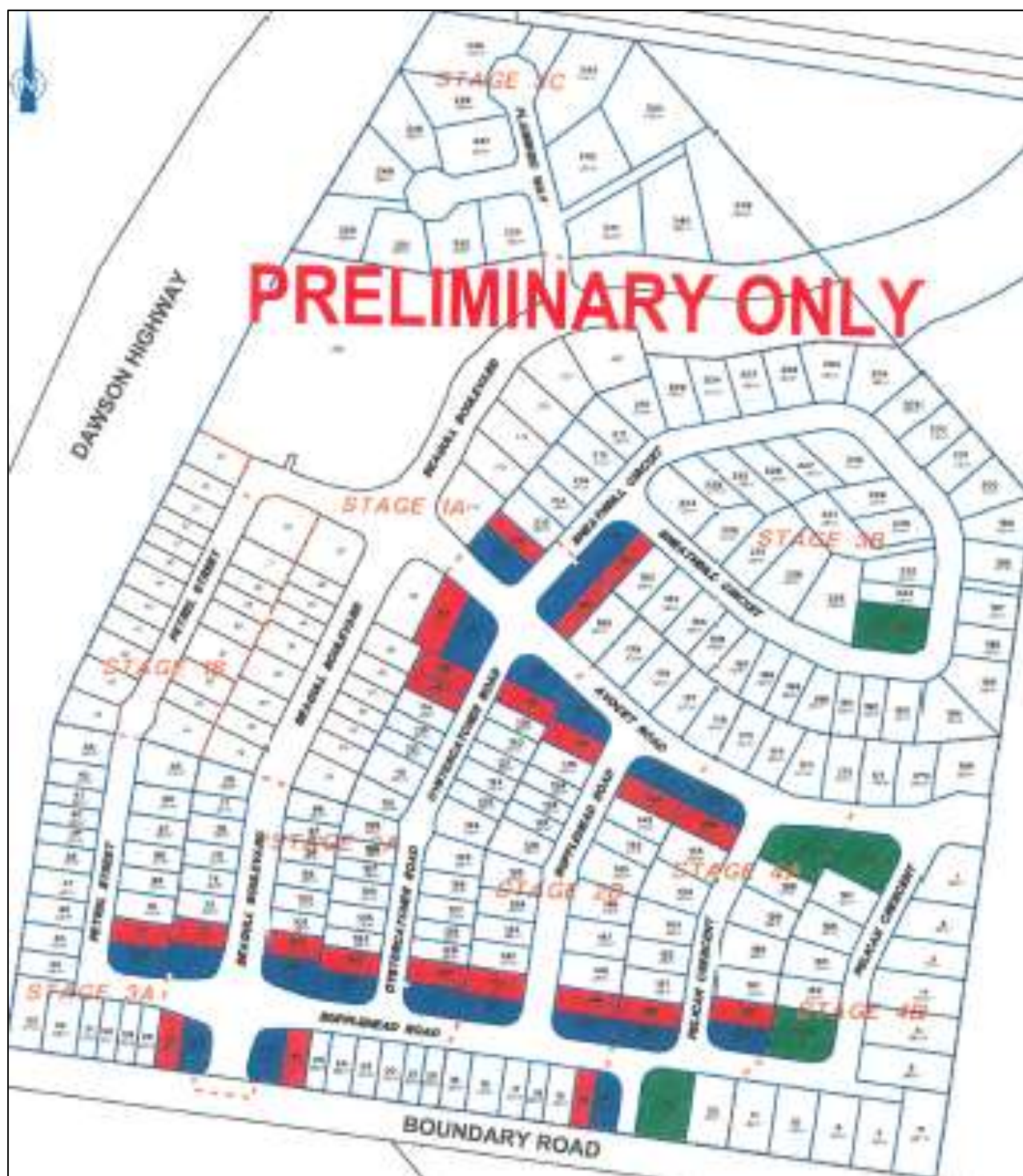
<p>Stage 1,2 & 3 (Total 187 Lots inc Balance Lots)</p>	<p>Construction Completed & On Maintenance Stage 1 & 2 Survey Plan signed 5 July 2012 Stage 1 & 2 On Maintenance 10 January 2013 Stage 3 Survey Plan signed 3 April 2013 Stage 3 On Maintenance 7 July 2013.</p>	<p>DA/11680/2009 DA/1717/2002 OPW/8407/2007 OPW/72/2010 OPW/78/2010 OPW/84/2010 OPW/208/2011 OPW/367/2012 OPW/421/2012 OPW/420/2012 OPW/359/2012 OPW/426/2012 OPW/260/2012 OPW/255/2012 OPW/589/2014</p>
------------------------------------------------------------	--------------------------------------------------------------------------------------------------------------------------------------------------------------------------------------------------------------------------------------------------	--------------------------------------------------------------------------------------------------------------------------------------------------------------------------------------------------------------------------------------------------------------------------------



Forest Springs Estate Approved Lot Layout

Oasis on Kirkwood, Kirkwood Road, KIRKWOOD

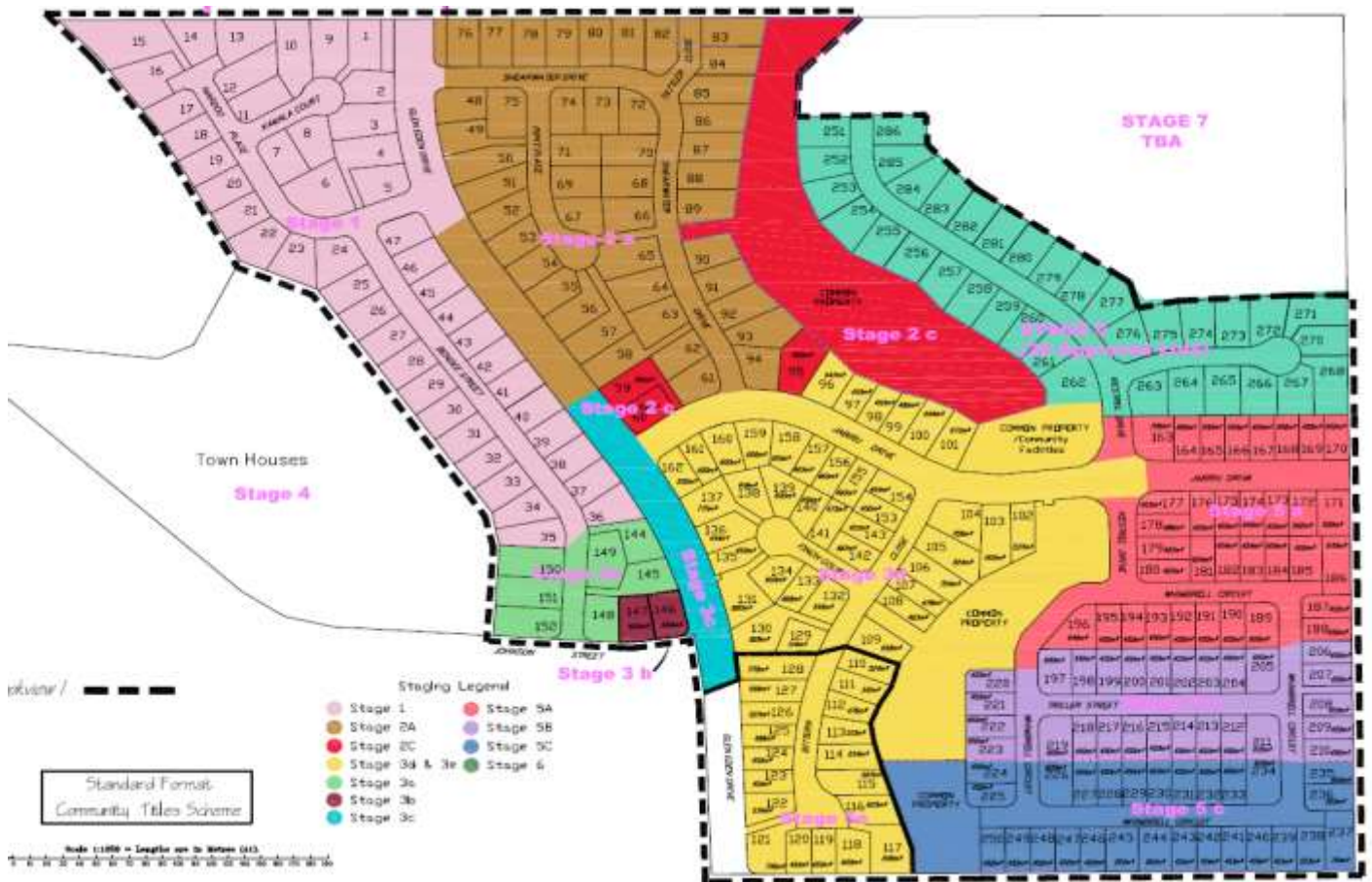
Stage 1A,2A & 2A & 2B	Construction Completed & On Maintenance Stage 1A Survey Plan Signed 24 January 2013 Stage 1B Survey Plan Signed 8 May 2013 Stage 2A Survey Plan Signed 25/10/2013 Stage 2B Survey Plan Signed 24 March 2014.	DA/10986/2008 OPW/10990/2008 OPW/141/2011 OPW/302/2012
Stage 3A,B&C and 4A&B	Construction on hold	DA/10986/2008 OPW/10990/2008 OPW/141/2011 OPW/302/2012



Oasis Estate Approved Lot Layout

Brookview Estate, Glen Eden Drive, GLEN EDEN

Stage 1 & 3A	Construction Completed & Off Maintenance	DA/9839/2007 OPW/209/2011 OPW/230/2011
Stage 2	Construction Completed & On Maintenance 2 May 2013 Stage 2A & 2C Survey Plan signed 26 April 2013	DA/9839/2007 OPW/242/2011
Stage 3	Construction Completed & On Maintenance 29 November 2013	DA/10556/2008 OPW/262/2012
Brookview Estate Stage 3B & 4J - Johnson Street	Construction Completed & On Maintenance 7 November 2013.	DA/10556/2008 OPW/509/2013



Brookview Estate Approved Lot Layout



Brookview Estate Stage 4 (Townhouse Site)

Hillclose Estate, Harvey Road, CLINTON (EDQ Development, formerly ULDA)

Stage 1,2 & 3,3A,5,6 (Total 234 Lots)	<p>Construction completed</p> <p>Stage 1 Survey Plan signed 29 June 2011</p> <p>Stage 2 Survey Plan signed 18 May 2012</p> <p>Stage 3 Survey Plan signed 25 September 2012</p> <p>Stage 3A Survey Plan signed 25 September 2012</p> <p>Stage 5 Survey plan signed 31 January 2013</p> <p>Stage 6 Survey plan signed 13 August 2013</p>	<p>DEV2010/055</p> <p>DEV2011/144</p> <p>DEV2012/229</p> <p>DEV2012/263</p> <p>DEV2012/264</p>
---------------------------------------	----------------------------------------------------------------------------------------------------------------------------------------------------------------------------------------------------------------------------------------------------------------------------------------------------------------------------------------	------------------------------------------------------------------------------------------------



Hillclose Estate Masterplan

Toolooa Central Estate, John Dory Drive, TOOLOOA

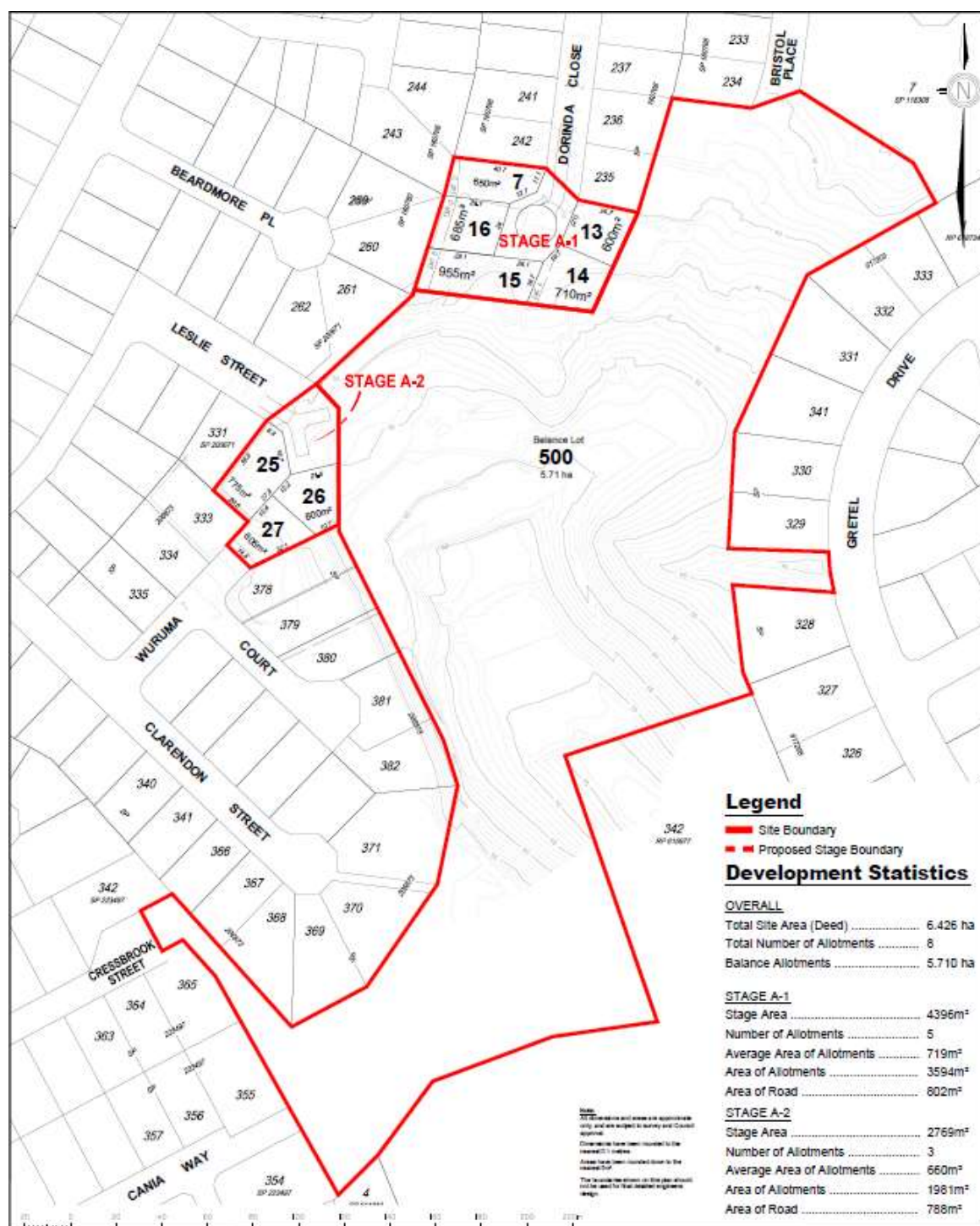
Stage 1 (7 Lots)	Construction Completed & On Maintenance. Stage 1 Survey Plan signed 5 April 2013	DA/411/2011 OPW/252/2012 OPW/275/2012
Stage 2 (7 Lots)	Construction on Hold	DA/411/2011 OPW/252/2012 OPW/275/2012



John Dory Drive Approved Lot Layout

Wuruma Court, CLINTON

Reconfiguration of a Lot (1 into 8)	Construction commenced and significantly advanced.	DA/484/2011 DA/535/2012 DA/840/2013 DA/908/2013. OPW/341/2012 OPW/355/2012 OPW/575/2014
Reconfiguration of a Lot (1 into 5) Small Lot Housing		
Detached Dwelling and Reconfiguration of a Lot (1 into 3)		



Wuruma Court Approved Lot Layout

Wilmott Street, GLADSTONE

Reconfiguring a lot (1 into 26)	Construction commenced and significantly advanced.	DA/9398/2007 OPW/10659/2008 OPW/11139/2008
---------------------------------	----------------------------------------------------	--------------------------------------------------

**Construction Work - Chapple Street**

UNIT/ TOWN HOUSE DEVELOPMENTS

Multiple Unit Residential - 52 Oaka Lane, GLADSTONE & 67-69 Auckland Street, GLADSTONE

78 Units	Construction completed. Survey plan signed & sealed.	DA/185/2010 OPW/254/2012 BP/4712/2011 BP/4713/2011 CA/281/2014
----------	------------------------------------------------------	----------------------------------------------------------------------------



Completed Work - Auckland Street

Multiple Unit Residential - 2 Pioneer Drive, Telina

Multiple Unit Residential (36 Units) , Manager's Residence and Ancillary Community Centre	Construction commenced nearing completion (Partial Building/ Plumbing Final).	DA/261/2010 OPW/327/2012 BP/2497/2013 BP/2498/2013
-------------------------------------------------------------------------------------------	-------------------------------------------------------------------------------	-------------------------------------------------------------

**Completed Work - Pioneer Drive**

Multiple Unit Residential - 1 Bayne Street, WEST GLADSTONE

(11 Units)	Construction commenced and nearing completion.	DA/456/2011 OPW/500/2013 BP/2366/2013 BP/2462/2013
------------	------------------------------------------------	-------------------------------------------------------------



Construction Work - Corner Bayne/ Scenery Street

Multiple Unit Residential - 11 Side Street, WEST GLADSTONE

(11 Units)	Construction completed.	DA/10237/2008 BP/597/2013 BP/598/2013 OPW/476/2013
------------	-------------------------	-------------------------------------------------------------

**Completed Work - Side Street**

OTHER DEVELOPMENTS

Prince Regent Esplanade, BARNEY POINT

Barney Point Foreshore Redevelopment	Construction commenced and significantly advanced.	OPW/324/2012 BP/994/2014 BP/995/2014 BP/996/2014
--------------------------------------	----------------------------------------------------	-----------------------------------------------------------

Flinders Parade, GLADSTONE

Gladstone East Shores Redevelopment Master Plan (Gladstone Ports Corporation)	Construction commenced and significantly advanced.	OPW/554/2014
-------------------------------------------------------------------------------	----------------------------------------------------	--------------



Gladstone East Shores Redevelopment Masterplan - Artist Impression

CALLIOPE - MAJOR DEVELOPMENTS UNDER CONSTRUCTION

RESIDENTIAL ESTATES

Beecher Estate, Jim Whyte Way, BURUA

Stages 1,2,3,4,5,6, 10 & 10C (Total 161 Lots)	Construction completed & Off Maintenance	DA/20567/2007 DA/20706/2009 DA/20738/2009 DA/20711/2009 DA/65/2009 DA/66/2009 DA/67/2009 DA/68/2009 DA/73/2009 DA/142/2010 OPW/160/2011 OPW/76/2010 OPW/239/2011
Stages (6A, 6B, 7 & 9, 10B2, 10D & 12 (Total 52 Lots)	Construction completed & On Maintenance Stage 6A Survey Plan signed 9 March 2010. Stage 6B Survey Plan signed 18 October 2013. Stage 7 Survey Plan signed 6 May 2008. Stage 9 Survey Plan signed 21 December 2010. Stage 10B2 Survey Plan signed 31 August 2012. Stage 10D Survey Plan signed 6 August 2013. Stage 12 Survey Plan signed 29 August 2011.	DA/20537/2007 DA/20672/2008 DA/20711/2009 DA/67/2009 DA/142/2010 DA/394/2011 DA/685/2012 DA/703/2012 OPW/468/2013 OPW/20502/2007 OPW/20580/2007 OPW/61/2010 OPW/267/2012 OPW/425/2012 OPW/107/2010
Stage 10B1 (Total 7 Lots)	Construction completed & Pending On Maintenance Survey Plan signed 22 December 2011.	DA/67/2009 DA/142/2010 OPW/76/2010 OPW/124/2011
Brendonna & Thomsen Road Upgrade	Construction commenced and significantly advanced.	OPW/323/2012
Stage 13 (Total 56 Lots over 5 Sub Stages)	Stage 13A & 13C Early stages of construction commenced.	DA/655/2012 OPW/564/2014



Construction Work - Brendonna & Thomsen Road Upgrade & Stage 13

Cloudscape Estate, Capricornia Drive, CALLIOPE

Stage 1,2,3,4 (Total 147 Lots)	Construction Completed & Pending On Maintenance. Uncompleted Works to be completed prior to On Maintenance. Stage 1 Survey Plan signed 21 September 2012 Stage 2 Survey Plan signed 9 May 2013 Stage 3 Survey Plan signed 29 November 2012 Stage 4 Survey Plan signed 9 May 2013	DA/20599/2008 OPW/178/2011 OPW/276/2012 DA/384/2011 OPW/220/2011 OPW/388/2012 DA/384/2011 OPW/213/2011 OPW/337/2012 DA/384/2011 OPW/253/2012 OPW/386/2012
Stage 5 (33 Lots)	Construction Completed & pending On Maintenance. Uncompleted Works to be completed prior to On Maintenance. Survey Plan signed 1/10/2013	DA/384/2011 OPW/320/2012 OPW/477/2013
Stage 6 (41 Lots)	Construction Completed & pending On Maintenance. Uncompleted Works to be completed prior to On Maintenance Survey Plan signed 19/11/2013	DA/384/2011 OPW/336/2012 OPW/478/2013

Cole Ridge Estate, Tarrawonga Drive, CALLIOPE

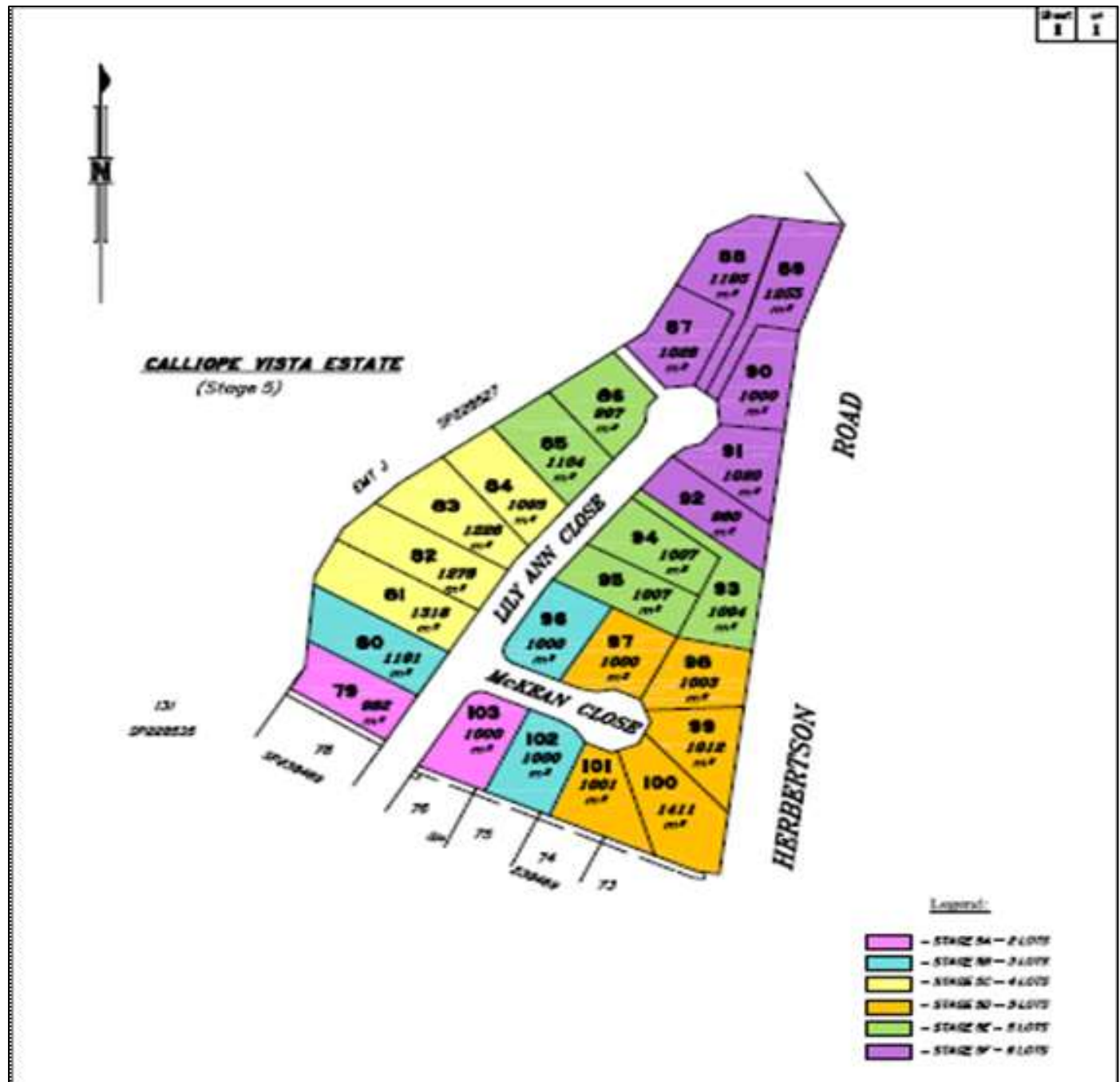
Stage 1 (64 Lots)	Construction Completed & On Maintenance 14 May 2014.	DA/20596/2008 OPW/137/2011 DA/980/2014
-------------------	------------------------------------------------------	----------------------------------------------

Stage 1 (18 lots)	Construction completed and pending On Maintenance.	DA/20483/2006 OPW/20558/2007
-------------------	----------------------------------------------------	---------------------------------



Calliope Vista, Trudy Avenue, CALLIOPE

Stage1, 2 & 3 (Total 60 Lots)	Construction Completed & Off Maintenance	DA/20539/2007 OPW/20473/2006 OPW/20551/2007
Stage 4 (18 Lots)	Construction Completed & On Maintenance Stage 4 Survey Plan signed 1/8/2012 Stage 4 On Maintenance 2 August 2013.	DA/20630/2008 OPW/20683/2008
Stage 5 - (25 Lots)	Early Stages of Construction Commenced	DA/20631/2008 OPW/268/2012 OPW/269/2013



Calliope Vista Stage 5 Approved Lot Layout

OTHER DEVELOPMENT

Motel, Caravan & Relocatable Home Park & Travel Centre, Dawson Highway, CALLIOPE

Motel, Caravan Park & Relocatable Home Park & Travel Centre	Internal works commenced and significantly advanced. External works nearing completion.	DA/496/2011 BP/874/2012 BP/875/2012 OPW/380/2012 OPW/449/2013
-------------------------------------------------------------	--------------------------------------------------------------------------------------------	---------------------------------------------------------------------------

TANNUM SANDS/ BOYNE ISLAND - MAJOR DEVELOPMENTS UNDER CONSTRUCTION

RESIDENTIAL ESTATES

The Sands Estate, Broadacres Drive, TANNUM SANDS

Stage 1A & 1B (110 Lots)	Construction commenced and nearing completion.	DA/20465/2006 DA/638/2012 DA/665/2012 DA/666/2012 DA/640/2012 OPW/434/2013 OPW/467/2013 OPW/441/2013 OPW/504/2013 OPW/496/2013 OPW/440/2013 OPW/542/2013
--------------------------	------------------------------------------------	-------------------------------------------------------------------------------------------------------------------------------------------------------------------------------------------



Construction Work - The Sands Stage 1A & 1B



Construction Work - The Sands Stage 1A & 1B



Construction Work - The Sands Stage 1A & 1B

Riverstone Rise Estate, Boyne Island Road, BOYNE ISLAND

Stage 1A, 1B, 1C1, 2A, 2B, 3 & 4B (Total 280 Lots)	Construction completed and On Maintenance Stage 1A survey plan signed 29 October 2012 Stage 1B Survey Plan signed 29 October 2012 Stage 1C1 Survey Plan signed 1 August 2013. Stage 2A Survey Plan signed 29 April 2013 Stage 2B Survey Plan signed 13 May 2013. Stage 3 Survey Plan signed 29 April 2013. Stage 4B Survey Plan signed 19 February 2014.	DA/495/2011 OPW/311/2011 OPW/286/2012 OPW/283/2012 OPW/447/2013 OPW/507/2013 OPW/515/2013 OPW/506/2013 OPW/281/2012 OPW/285/2012 OPW/241/2011 OPW/240/2011 OPW/305/2012 OPW/451/2013
Riverstone Rise Precinct 1 - Stage 1C (18 Lots)	Early Stages of Construction Commenced	DA/495/2011 OPW/240/2011 OPW/241/2011
Riverstone Rise Precinct 1 - Stage 4A & 4C (Total 45 Lots)	Early Stages of Construction Commenced	DA/495/2011 OPW/451/2013 OPW/506/2013 OPW/515/2013



Riverstone Rise Stage 4A & 4C Approved Lot Layout

Marina Avenue, Marina Avenue, BOYNE ISLAND

Stage 2 (10 lots)	Construction Completed & pending On Maintenance.	DA/20384/2004 OPW/20645/2008
-------------------	-----------------------------------------------------	---------------------------------



Completed Work - Marina Avenue

UNIT/ TOWN HOUSE DEVELOPMENTS

Multiple Unit Residential - 10 Wyndham Avenue, BOYNE ISLAND

Multiple Unit Residential (21 Units)	Construction commenced and significantly advanced.	DA/20188/2003 BP/3077/2012 OPW/410/2012 BP/2162/2013
--------------------------------------	----------------------------------------------------	---------------------------------------------------------------



Construction Work - Wyndham Avenue

Multiple Unit Residential - 1 Pacific Avenue, TANNUM SANDS

Multiple Unit Residential (20 Units), Shops & Office	Construction commenced and significantly advanced.	DA/270/2011 BP/1232/2013 OPW/456/2013
------------------------------------------------------	----------------------------------------------------	---------------------------------------------



Construction Work - Pacific Avenue

Multiple Unit Residential - 3 Crest Avenue, BOYNE ISLAND

Multiple Unit Residential (5 Units)	Early stages of construction commenced.	DA/553/2012 OPW/444/2013 BP/3611/2012 BP/2612/2012
-------------------------------------	-----------------------------------------	-------------------------------------------------------------



Construction Work - Crest Avenue

AGNES WATER/ 1770 - MAJOR DEVELOPMENTS UNDER CONSTRUCTION

RESIDENTIAL ESTATES

Point View Estate, Beaches Village Circuit, AGNES WATER

Stage 1 (7 Lots)	Construction commenced & significantly advanced.	DA/44721/2009 OPW/363/2012
------------------	--------------------------------------------------	-------------------------------

Agnes Shores Estate , Round Hill Road, AGNES WATER & Seascape Close, AGNES WATER

Stage 3 (20 Lots)	Construction commenced & significantly advanced.	DA/44743/2009 OPW/423/2012 OPW/522/2013
-------------------	--------------------------------------------------	-----------------------------------------------

OTHER DEVELOPMENTS

Heights Entrance, AGNES WATER

Shopping Centre	Early stages of construction commenced.	DA/44649/2008 OPW/81/2010 BP/2867/2013
-----------------	-----------------------------------------	----------------------------------------------

Lagoons @ 1770 Beaches Village Circuit, AGNES WATER

60 Dual Key Units, Managers Residence and Reception Office & Catering Premises (Restaurant), Indoor Recreation (Conference Facilities) and Commercial Premises (Day Spa)	Construction re-commenced.	Court Appeal No 2632 of 2013 DA/40416/2004 43970/2007/DA 44019/2007/DA 44606/2008/DA OPW/43809/2007 OPW/44225/2008 DA/890/2013
--------------------------------------------------------------------------------------------------------------------------------------------------------------------------	----------------------------	-----------------------------------------------------------------------------------------------------------------------------------------------------

SECTION 2: GLADSTONE - MAJOR DEVELOPMENTS WITH DEVELOPMENT APPROVAL (TOWN PLANNING) BUT NOT UNDER CONSTRUCTION

Application Number	Description	Location	Approved	Associated Applications
DA/5850/2005	Preliminary Approval - Mixed Use Development Precinct, Higher Density Residential Precinct, Urban Residential Precinct, Rural Residential Precinct, Community Title Precinct, & Open Space Precinct	Lot 7 RP 905784, Kirkwood Road, KIRKWOOD QLD 4680 Lot 1 SP 228533, Kirkwood Road, KIRKWOOD QLD 4680 Lot 10 SP 118590, Koowin Drive, KIRKWOOD QLD 4680	27-Apr-2007	
DA/7732/2006	Byellee Estate - Rural Residential Subdivision (3 into 75)	Lot 95 CTN 1717, Dawson Highway, BYELLEE QLD 4680 Lot 93 SP 140240, Don Young Drive, BYELLEE QLD 4680	22-Oct-2010	OPW/199/2011, Roadworks, Drainage, Landscaping, Stormwater, Earthworks, Water Infrastructure & Sewerage Infrastructure
DA/9228/2007	Multiple Unit Residential (61 Units)	9 Shaw Street, NEW AUCKLAND QLD 4680	05-Dec-2007	OPW/488/2013, Road Works, Stormwater, Drainage Works, Earthworks and Sewerage Infrastructure
Court Appeal No 529 of 2013 DA/10817/2008	Stockwood Estate Stage 2A (43 Lots), Stage 2B (61 Lots) & Stage 2C (54 Lots)	Lot 201 SP 242764, Kirkwood Road, O'CONNELL QLD 4680	21-Mar-2013	OPW/381/2012, Roadworks, stormwater, water infrastructure, drainage works, earthworks, sewerage infrastructure, signage & clearing vegetation under planning scheme.
Court Appeal No 995 of 2012 DA/11307/2008	Development Permit for Material Change of Use for residential development Development Permit for Stage 1 of staged reconfiguration of a lot (1 into 91) new road and park Preliminary Approval over-riding a Planning Scheme (S3.1.6) for all stages	Lot 3 SP 253021, Glen Eden Drive, GLEN EDEN QLD 4680	29-Jun-2012	OPW/383/2012, Landscaping OPW/312/2012, Earthworks OPW/313/2012, Road Works, Stormwater, Water Infrastructure, Drainage Works, Sewerage Infrastructure and Signage OPW/314/2012, Road Works, Stormwater, Water Infrastructure, Drainage Works, Sewerage Infrastructure and Signage
DA/10280/2008	Little Creek Estate Stage 17B (22 Lots)	Lot 950 SP 250628, Kirkwood Road, KIRKWOOD QLD 4680	21-May-2012	
DA/10280/2008	Little Creek Estate Stage 18A	Lot 950 SP 250628, Kirkwood	21-May-2012	

DA/10330/2008	(41 Lots) & Stage 18B (20 Lots) Multiple Unit Residential (5 Units)	Road, KIRKWOOD QLD 4680 14 Short Street, SOUTH GLADSTONE QLD 4680	17-Dec-2008	OPW/210/2011, Stormwater, Drainage Works, Earthworks, Footpath, Driveway & Car Parking
DA/10556/2008	Brookview Estate Stage 5A, 5B & 5C (Total 88 Lots)	Lot 3 SP 225799, Glenlyon Road, GLEN EDEN QLD 4680 Lot 0 SP 252926, Glenlyon Road, GLEN EDEN QLD 4680	20-Apr-2010	OPW/492/2013, Road Works, Stormwater, Water Infrastructure, Drainage Works, Earthworks & Sewerage Infrastructure
DA/10762/2008	Preliminary Approval - Change of Zone From Urban Expansion to Residential - Development Permit for Residential Subdivision in Urban Expansion & Rural Zones, Staged Reconfiguring A Lot (5 into 516) and Multiple Unit (233 Units) Residential Over 5 Key Sites (Forrest Springs)	Lot 900 SP 144790, Parksville Drive, NEW AUCKLAND QLD 4680 Lot 2 RP 899392, Kirkwood Road, KIRKWOOD QLD 4680 Lot 905 SP 253014, Kirkwood Road, KIRKWOOD QLD 4680 Lot 243 SP 174113, Kirkwood Road, KIRKWOOD QLD 4680 Lot 301 SP 174113, Kirkwood Road, KIRKWOOD QLD 4680	11-Oct-2013	OPW/372/2012, Earthworks OPW/429/2012, Road Works, Stormwater, Water Infrastructure, Earthworks, Drainage Works & Sewerage Infrastructure OPW/525/2013, Landscaping OPW/432/2012, Earthworks OPW/529/2013, Landscaping OPW/579/2014, Road Works, Stormwater, Water & Sewerage Infrastructure, Drainage Works, Earthworks & Landscaping OPW/486/2013, Roadworks, Stormwater, Water Infrastructure, Drainage Works & Sewerage Infrastructure
DA/62/2009	3 into 191 (Stages 1 - 4)	Lot 1 RP 612870, Auckland, Lot 1 SP 228533, Kirkwood Road, KIRKWOOD QLD 4680	28-Feb-2011	DA/5850/2005, Preliminary Approval - Mixed Use Development Precinct, Higher Density Residential Precinct, Urban Residential Precinct, Rural Residential Precinct, Community Title Precinct, & Open Space Precinct
DA/77/2009	Multiple Unit Residential (28 units) under the superseded Planning Scheme	Lot 2 Sun Valley Road, KIN KORA QLD 4680	04-Oct-2011	
Court Appeal No 296 of 2010 DA/118/2010	Multiple Unit Residential (8 Units)	15 Agnes Street, SOUTH GLADSTONE QLD 4680	16-Nov-2010	OPW/461/2013, Landscaping BP/661/2013, Plumbing Works - Units (6) BP/763/2013, 6x Units OPW/493/2013, Stormwater & Sewerage Infrastructure
DA/112/2010	Multiple Unit Residential (59	21 Lord Street, GLADSTONE	01-Mar-2011	

	Units), Shop, Office & Food Premises	QLD 4680 7 Goondoon Street, GLADSTONE QLD 4680		
DA/139/2010	Multiple Unit Residential (8 Units)	153 Off Street, SOUTH GLADSTONE QLD 4680	02-Jul-2010	BP/5822/2011, Plumbing Work - Units
DA/154/2010	Motel (79 units)	7 Goondoon Street, GLADSTONE QLD 4680 8 Central Lane, GLADSTONE QLD 4680	01-Mar-2011	
DA/207/2010	Workers Accommodation - 1000 Unit Village	Lot 1 CTN 805594, Callemondah Drive, CLINTON QLD 4680 Lot 1 RP 608482, Aerodrome Road, CLINTON QLD 4680	07-Dec-2010	
DA/255/2010	Staged Development - Cluster Housing (41 Units)	112 Sun Valley Road, KIN KORA QLD 4680	04-Oct-2011	
DA/303/2011	Reconfiguration of a Lot (Stage 1 - 24 residential lots, balance lot and road) & (Stage 2 - 17 residential lots, park, pedestrian connections and road) & Material Change of Use - (Small Lot Housing for Proposed Lots 7 to 24 in Stage 1)	Lot 70 SP 165443, Kirkwood Road, CLINTON QLD 4680	06-Sep-2011	OPW/127/2011, Roadworks, Stormwater, Drainage Works, Earthworks, Signage, Water & Sewerage Infrastructure
DA/310/2011	Multiple Unit Residential (11 units)	68 Glenlyon Street, GLADSTONE QLD 4680	15-Nov-2011	
DA/331/2011	Multiple Unit Residential - Stage 1 (8 Units) & Stage 2 (4 Units)	71-73 Toolooa Street, SOUTH GLADSTONE QLD 4680 104 Off Lane, SOUTH GLADSTONE QLD 4680	26-Oct-2011	
DA/333/2011	Reconfiguring a Lot (1 into 39 plus balance lot) and Material Change Of Use - Code - Small Lot Housing	Lot 1 SP 211059, Kirkwood Road, NEW AUCKLAND QLD 4680	11-Dec-2013	
DA/337/2011	Multiple Unit Residential (18 Units)	8 Scenery Street, WEST GLADSTONE QLD 4680	11-Nov-2011	OPW/511/2013, Stormwater, Earthworks, Landscaping
DA/343/2011	Multiple Unit Residential (24 Units)	8-10 Boles Street, WEST GLADSTONE QLD 4680	18-Oct-2011	
DA/351/2011	Multiple Unit Residential (12 Units)	5 Murray Street, WEST GLADSTONE QLD 4680	11-Nov-2011	DA/736/2012, Multiple Unit Residential (Stage 2 - 2 additional Units)
DA/364/2011	Multiple Unit Residential (6 Units)	2 View Street, WEST GLADSTONE QLD 4680	31-Oct-2011	
DA/367/2011	Multiple Unit Residential (8 Units)	25 Rossella Street, WEST GLADSTONE QLD 4680	14-Oct-2011	OPW/308/2012, Earthworks OPW/328/2012, Roadworks,

				stormwater, water infrastructure, drainage works, earthworks and sewerage infrastructure.
DA/371/2011	Vantage Estate Stage 10 (35 Lots)	Lot 509 SP 251455, Kirkwood Road, NEW AUCKLAND QLD 4680	06-Aug-2012	OPW/417/2012, Road Works, Stormwater, Water Infrastructure, Drainage Works, Earthworks, Sewerage Infrastructure & Signage
DA/371/2011	Vantage Estate Stage 8 (48 Lots)	Lot 509 SP 251455, Kirkwood Road, NEW AUCKLAND QLD 4680	06-Aug-2012	OPW/308/2012, Earthworks OPW/360/2012, Road Works, Stormwater, Water Infrastructure, Drainage Works, Earthworks, Sewerage Infrastructure and Signage OPW/418/2012, Landscaping
DA/380/2011	Multiple Unit Residential (5 Units)	6 Ormonde Street, WEST GLADSTONE QLD 4680	26-Sep-2011	
DA/382/2011	Multiple Unit Residential (20 Units)	38-38A Kent Street, WEST GLADSTONE QLD 4680	02-Nov-2011	OPW/332/2012, Stormwater, Water Infrastructure, Drainage Works, Earthworks and Landscaping
DA/387/2011	Industrial Subdivision (1 into 10)	47 Bensted Road, CALLEMONDAH QLD 4680	17-Jan-2012	
DA/419/2011	Multiple Unit Residential (5 Units)	5 Ormonde Street, WEST GLADSTONE QLD 4680	07-Aug-2012	
DA/432/2011	Little Creek Estate Stage 7A (20 Lots), Stage 7B (19 Lots)	Lot 950 SP 250628, Kirkwood Road, KIRKWOOD QLD 4680	03-Oct-2013	OPW/394/2012, Roadworks, Drainage Works, Stormwater, Earthworks, Water Infrastructure, Sewerage Infrastructure & Clearing Vegetation Under the Planning Scheme. (Little Creek - 7A) OPW/470/2013, Landscaping (Little Creek - 7A Streetscape) OPW/471/2013, Landscaping (Little Creek - 7A Drainage) OPW/402/2012, Road Works, Stormwater, Water Infrastructure, Drainage Works, Earthworks, Sewerage Infrastructure & Clearing Vegetation Under The Planning Scheme (Little Creek - 7B) OPW/472/2013, Landscaping

DA/432/2011	Little Creek Estate Stage 9 (30 Lots)	Lot 950 SP 250628, Kirkwood Road, KIRKWOOD QLD 4680	03-Oct-2013	(Little Creek - 7B Streetscape) OPW/490/2013, Landscaping (Little Creek - 9 Drainage) OPW/491/2013, Landscaping (Little Creek - 9 Streetscape) OPW/571/2014, Road Works, Stormwater, Water & Sewerage Infrastructure, Drainage Works, Earthworks & Clearing Vegetation under the Planning Scheme
DA/432/2011	Little Creek Estate Stage 11A (22 lots) & Stage 11B (20 lots)	Lot 950 SP 250628, Kirkwood Road, KIRKWOOD QLD 4680	03-Oct-2013	OPW/428/2012, Road Works, Stormwater, Water Infrastructure, Drainage Works, Earthworks, Sewerage Infrastructure, Signage & Clearing Vegetation Under the Planning Scheme (Little Creek - 11A) OPW/427/2012, Road Works, Stormwater, Water Infrastructure, Drainage Works, Earthworks, Sewerage Infrastructure, Signage & Clearing Vegetation Under the Planning Scheme (Little Creek - 11B)
DA/432/2011	Little Creek Estate Stage 17B, 18A, 18B, 18C, 10 & 19 (Total 104 Lots)	Lot 950 SP 250628, Kirkwood Road, KIRKWOOD QLD 4680	27-Feb-2013	
DA/445/2011	Multiple Unit Residential (6 Units)	27 Roberts Street, SOUTH GLADSTONE QLD	30-Jul-2012	
DA/450/2011	Multiple Unit Residential (30 Units)	6 Harvey Road, CLINTON QLD 4680	10-Apr-2012	
DA/482/2011	Motel (52 Units)	8 Wenitong Street, WEST GLADSTONE QLD 4680	06-Dec-2012	OPW/413/2012, Stormwater & Sewerage Infrastructure BP/553/2013, Plumbing Works - Route 66 Motel BP/1050/2013, PC Motel
DA/488/2011	Multiple Use Residential (10 Units)	3 French Street, SOUTH GLADSTONE QLD 4680	10-Jul-2012	
DA/494/2011	Brookview Estate Stage 4 - Brookview Gardens Multiple Unit Residential (168 units) & Reconfiguring a Lot (1 into 7)	Lot 0 SP 252926, Glenlyon Road, GLEN EDEN QLD 4680	02-Aug-2012	OPW/520/2013, Earthworks OPW/532/2013, Earthworks

DA/500/2012	Little Creek Estate Stage 10 - Multiple Unit Residential (31 Units)	Lot 950 SP 250628, Kirkwood Road, KIRKWOOD QLD 4680	23-Aug-2013	OPW/400/2012, Roadworks, Stormwater, Water Infrastructure, Drainage Works, Earthworks, Sewerage Infrastructure & Clearing Vegetation Under the Planning Scheme. OPW/430/2013, Landscaping OPW/80/2010, Earthworks
DA/509/2012	Preliminary Approval - Change in Density (Community Purpose Zone to Residential Zone) & Reconfiguring a Lot (1 into 23)	90 Boles Street, WEST GLADSTONE QLD 4680	20-Aug-2013	
DA/527/2012	Multiple Unit Residential (24 Dwelling Units) (Stage One Only)	43-49 Yarroon Street, GLADSTONE QLD 4680 26 Hanson Road, GLADSTONE QLD 4680	13-Mar-2013	DA/872/2013, 10 into 3 & Access Easement DA/549/2012, Food Premises (Business) DA/999/2014, Motel & Shopping Centre
DA/541/2012	Vantage Estate Multiple Unit Residential (52 Units)	Lot 509 SP 251455, Kirkwood Road, NEW AUCKLAND QLD 4680	20-Nov-2012	
DA/552/2012	Reconfiguring a Lot (2 into 309)	Lot 25 SP 206873, Col Brown Avenue, CLINTON QLD 4680 2 Julius Crescent, CLINTON QLD 4680	6-Aug-2013	
DA/560/2012	Reconfiguring a Lot (1 into 34)	9 Wuruma Court, CLINTON QLD 4680	16-Apr-2013	
DA/567/2012	Small Lot Housing & Reconfiguring a Lot (1 into 21)	Lot 1 SP 211059, Kirkwood Road, NEW AUCKLAND QLD 4680	12-Dec-2013	
DA/568/2012	Multiple Unit Residential (12 Units)	4 Boles Street, WEST GLADSTONE QLD 4680	27-Mar-2013	
DA/570/2012	Multiple Unit Residential (6 Town Houses)	67 Flinders Parade, GLADSTONE QLD 4680	07-Aug-2012	
DA/593/2012	Multiple Unit Residential (5 Town Houses)	9 Vincent Street, WEST GLADSTONE QLD 4680	31-May-2012	
DA/598/2012	Multiple Unit Residential (11 Units)	108-110 Off Lane, SOUTH GLADSTONE QLD 4680	27-Sep-2012	
DA/600/2012	Multiple Unit Residential (6 Units)	4 Norton Lane, WEST GLADSTONE QLD 4680	09-Oct-2012	OPW/403/2012, Stormwater, Earthworks & Sewerage Infrastructure BP/1116/2013, Plumbing work - 6 townhouses
DA/605/2012	Multiple Unit Residential (45	97 Auckland Street,	31-May-2013	OPW/485/2013, Roadworks,

	Units)	GLADSTONE QLD 4680		Stormwater, Water Infrastructure, Drainage Works, Earthworks & Sewerage Infrastructure
DA/615/2012	Multiple Unit Residential (5 Units)	14 Ailsa Street, WEST GLADSTONE QLD 4680	17-Sep-2012	OPW/435/2012, Road Works, Stormwater, Water Infrastructure & Drainage Works
DA/617/2012	Multiple Unit Residential (5 Town Houses)	62 Flinders Street, WEST GLADSTONE QLD 4680	27-Aug-2012	OPW/390/2012, Stormwater, Drainage Works, Earthworks and Sewerage Infrastructure
DA/620/2012	Multiple Unit Residential (14 Units)	6-8 Mylne Street, WEST GLADSTONE QLD 4680	14-Feb-2013	
DA/623/2012	Extension to Existing Aged Persons Accommodation (53 Units)	2 Marten Street, SOUTH GLADSTONE QLD 4680	26-Feb-2013	
DA/651/2012	Multiple Unit Residential (33 Units)	71-73 Auckland Street, GLADSTONE QLD 4680	30-Nov-2012	OPW/466/2013, Road Works, Stormwater, Drainage Works, Earthworks, Sewerage Infrastructure and Signage
DA/658/2012	Preliminary Approval for Change in Density for Residential Land Use, Material Change of Use for Community Advisory Service Centre, Neighbourhood Centre, Child Care Centre, 4 Community Facility Lots, Food Premises, 54 Dwelling House Lots, 7 Duplex Lots, 6 Park Lots & Reconfiguration of a Lot (1 into 67)	Lot 7 RP 618441, Paterson Street, WEST GLADSTONE QLD 4680	17-Dec-2013	OPW/482/2013, Landscaping
DA/668/2012	Little Creek Estate Stage 14B - 16B - Reconfiguring a Lot (1 into 43)	Lot 950 SP 250628, Kirkwood Road, KIRKWOOD QLD 4680	08-Oct-2013	
DA/675/2012	Multiple Unit Residential (11 Units)	11 Pacific Court, KIN KORA QLD 4680	02-Apr-2013	
DA/677/2012	Reconfiguring a Lot (3 into 27)	Lot 332 - 334 CTN 1657, Hanson Road, GLADSTONE QLD 4680	25-Oct-2013	
DA/683/2012	Multiple Unit Residential (5 Units)	12 Ailsa Street, WEST GLADSTONE QLD 4680	23-Oct-2012	
DA/684/2012	Multiple Unit Residential (66 Units)	40 Glenlyon Street, GLADSTONE QLD 4680	11-Sep-2013	OPW/550/2013, Road Works, Stormwater, Water

				Infrastructure, Drainage Works, Earthworks & Sewerage Infrastructure BP/2905/2013, Plumbing Works - Units (Stage 1 - Block C)
DA/690/2012	Multiple Unit Residential (18 Units)	15 Kent Street, WEST GLADSTONE QLD 4680	15-Jan-2013	OPW/518/2013, Stormwater, Water Infrastructure, Drainage Works, Earthworks, Sewerage Infrastructure, Landscaping
DA/695/2012	Multiple Unit Residential (30 Units)	38 Barney Street, BARNEY POINT QLD 4680	19-Mar-2013	
DA/713/2012	Multiple Unit Residential (9 Units)	13 Scenery Street, WEST GLADSTONE QLD 4680	05-Feb-2013	OPW/483/2013, Road Works, Stormwater, Drainage Works, Earthworks and Sewerage Infrastructure BP/851/2013, Plumbing Work - Units
DA/739/2012	Multiple Unit Residential (8 Units)	19 Side Street, WEST GLADSTONE QLD 4680	08-May-2013	OPW/546/2013, Road Works, Stormwater, Drainage Works, Earthworks & Sewerage Infrastructure
DA/747/2012	Multiple Unit Residential (9 Units)	8 Railway Street, WEST GLADSTONE QLD 4680	31-May-2013	OPW/523/2013, Stormwater, Water Infrastructure, Drainage Works, Earthworks, Sewerage Infrastructure, Landscaping & Driveway
DA/752/2012	Multiple Unit Residential (19 Townhouses) (Proposed Lot 309)	Lot 25 SP 206873, Col Brown Avenue, CLINTON QLD 4680	20-Aug-2013	
Court Appeal No 4825 of 2013 DA/775/2012	Extension of Shopping Centre	75 Dawson Highway, WEST GLADSTONE QLD 4680	03-Dec-2013	
DA/768/2012	Multiple Unit Residential (32 Units)	7-11 Fisher Street, WEST GLADSTONE QLD 4680	17-Sep-2013	OPW/565/2014, Road Works, Stormwater, Water & Sewerage Infrastructure, Drainage Works, Earthworks, Landscaping
DEV2012/264 EDQ Development	Hillclose Estate Stage 4 (34 Lots), Stage 4A (2 Lots) & 7 (18 Lots)	2 Harvey Road, CLINTON QLD 4680	24-Sep-2012	
DA/770/2012	Multiple Unit Residential (10 Units)	7 Ailsa Street, WEST GLADSTONE QLD 4680	02-Jul-2013	
DA/778/2012	Multiple Unit Residential (10 Units in 4 Stages)	79 Central Lane, GLADSTONE QLD 4680 40-42 Bramston Street, GLADSTONE QLD 4680	19-Sep-2013	
DA/781/2012	Multiple Unit Residential (11 Units)	60-62 Flinders Street, WEST GLADSTONE QLD 4680	16-Aug-2013	

DA/811/2013	Units) Multiple Unit Residential (12 Units)	GLADSTONE QLD 4680 7 Railway Street, WEST GLADSTONE QLD 4680	26-Jul-2013	OPW/530/2013, Roadworks, Stormwater, Drainage Works, Sewerage Infrastructure.
DA/8419/2007	Multiple Unit Residential (7 Units)	40 Yarroon Street, GLADSTONE QLD 4680	02-Jan-2008	OPW/216/2011, Roadworks, Stormwater, Drainage Works, Earthworks, Water & Sewerage Infrastructure BP/1180/2012, PC Units x 7 BP/5817/2011, Plumbing Work - Seven (7) Units
DA/847/2013	Motel (20 Units)	30 Far Street, WEST GLADSTONE QLD 4680	28-Nov-2013	
DA/854/2013	Multiple Unit Residential (11 Units)	2 View Street, WEST GLADSTONE QLD 4680	06-Nov-2013	OPW/547/2013, Roadworks, Stormwater, Drainage Works & Sewerage Infrastructure
DA/898/2013	Motel (198 rooms) & Food Premises	30-32 & 31 Goondoon Street GLADSTONE QLD 4680 28 Yarroon Street GLADSTONE QLD 4680	3-Jun-2014	
DA/911/2013	Multiple Unit Residential (8 Units)	70 Flinders Street WEST GLADSTONE QLD 4680	17-Apr-2014	

CALLIOPE - MAJOR DEVELOPMENTS WITH DEVELOPMENT APPROVAL (TOWN PLANNING) BUT NOT UNDER CONSTRUCTION

Application Number	Description	Location	Approved	Associated Applications
DA/20370/2006	1 Rural Lot into 44 Rural Residential Lots	2320 Dawson Highway, CALLIOPE QLD 4680	29-Nov-2007	OPW/196/2011, Roadworks, Stormwater, Drainage Works, Earthworks & Water Infrastructure
DA/20568/2007	Material Change of Use & Boundary Realignment & Reconfiguring a Lot (1 into 61 Lots)	105 Stowe Road, CALLIOPE QLD 4680	14-Mar-2008	OPW/20670/2008, Operational Works - Stage 1 Golf Club Estate - 21 Lots
DA/20583/2007	Material Change of Use (Rural to Village) & Reconfiguring a Lot (1 into 216) in 5 stages - 1986 Dawson Highway, Calliope (Calliope Outlook Estate)	1986 Dawson Highway, CALLIOPE QLD 4680	21-Sep-2008	OPW/20615/2008, Op Works - Bulk Earthworks
DA/20600/2008	Material Change of Use Residential Density & Reconfiguring a Lot - 1 lot into 61 lots (Elliot's Run Estate)	Lot 800 SP 249368, Tarrawonga Drive, CALLIOPE QLD 4680	09-Apr-2010	OPW/100/2010, Roadworks, Stormwater, Earthworks, Water & Sewerage Infrastructure
DA/20609/2008	Material Change of Use Rural Residential Density & Reconfiguring a Lot - 1 lot into 31 lots	20 Ivy Road, CALLIOPE QLD 4680	06-Oct-2009	
DA/20629/2008	Change in Zone from Rural to Rural Residential & Reconfiguring a Lot - (1 into 83)	2402 & 2416 Dawson Highway, CALLIOPE QLD 4680	08-Aug-2013	
DA/20631/2008	Calliope Vista Estate Stage 6-7 (78 Lots)	Lot 132 SP 238469, Trudy Avenue, CALLIOPE QLD 4680	02-Sep-2008	
DA/20662/2008	Preliminary Approval - 147 rural residential lots - Development Approval, Stages 1 & 2 - 73 rural residential lots - Material Change of Use Rural Residential Density & Reconfiguring a Lot	2303 Dawson Highway, CALLIOPE QLD 4680 78 Racecourse Road, CALLIOPE QLD 4680	21-Jul-2009	OPW/119/2011, Roadworks, Stormwater, Drainage Works, Earthworks, Signage, Water Infrastructure, External Water Reticulation & Bikepath OPW/524/2013, Water Infrastructure
DA/20669/2008	DA/20669/2008, Reconfiguring a Lot - 1 lot into 332 lots - Stages 1-11 - Panorama Estate	85 Morcom Street, CALLIOPE QLD 4680	19-Apr-2010	OPW/228/2011, Roadworks, Stormwater, Drainage Works, Earthworks, Signage, Clearing

				Vegetation, Water & Sewerage Infrastructure
DA/93/2009	Beecher Estate Stage 11 (14 Lots)	290 & 302 Jim Whyte Way, BURUA QLD 4680	22-Sep-2011	OPW/469/2013, Roadworks, Stormwater Water Infrastructure, Earthworks & Clearing Vegetation Under the Planning Scheme (Refused)
DA/655/2012	Beecher Estate Stage 13 (5 Sub Stages) Change in Density from Rural to Rural Residential & Reconfiguration of a Lot (3 into 56)	375 Brendonna Road, BURUA QLD 4680 330 Brendonna Road, BURUA QLD 4680	12-Feb-2014	OPW/574/2014, Water Infrastructure & Earthworks OPW/594/2014, Road works, stormwater, earthworks, water infrastructure & Clearing vegetation under the planning scheme. OPW/576/2014, Water Infrastructure
DA/312/2011	Multiple Unit Residential (9 Units)	Lot 194 SP 231566, Katherine Road, CALLIOPE QLD 4680	25-Oct-2012	
DA/384/2011	Cloudscape Estate Stage 7 (30 Lots), Stage 8 (51 Lots) & Stage 9 (40 Lots)	Lot 101 RP 836843, Arthur Hulme Way, CALLIOPE QLD 4680	24-Jan-2012	OPW/453/2013, Road Works, Stormwater, Water Infrastructure, Drainage Works, Earthworks, Sewerage Infrastructure, Signage & Clearing Vegetation Under The Planning Scheme OPW/455/2013, Road Works, Stormwater, Water Infrastructure, Drainage Works, Earthworks, Sewerage Infrastructure, Signage & Clearing Vegetation Under the Planning Scheme
Court Appeal No 635 of 2012 DA/401/2011	Workers Accommodation Staged (166 Units - 498 Persons) & Environmentally Relevant Activity 63 Sewerage Treatment	Lot 102 RP 802833, Hooke Road, CALLIOPE QLD 4680	29-Aug-2012	OPW/431/2012, Earthworks & Clearing Vegetation Under the Planning Scheme OPW/464/2013, Road Works, Stormwater, Water Infrastructure and Drainage Works
DA/405/2011	Calliope Chase Estate Stage 12& 13A (1 into 28 plus Balance Lot)	Lot 500 SP 246149, Orpheus Drive, CALLIOPE QLD 4680	21-Dec-2011	OPW/306/2012, Roadworks, stormwater, water infrastructure, drainage works, earthworks & sewerage infrastructure.
DA/504/2012	Multiple Unit Residential (14	2041 Dawson Highway,	04-Sep-2012	

	Townhouses) & Reconfiguring a Lot (1 into 2)	CALLIOPE QLD 4680		
DA/522/2012	Caravan and Relocatable Home Park (140 Sites)	75 Racecourse Road, CALLIOPE QLD 4680	07-May-2013	
DA/641/2012	Change in Zone from Rural Residential to Village & Reconfiguration of a Lot (1 into 11)	22 Morcom Street, CALLIOPE QLD 4680	04-Jul-2013	
DA/663/2012	Workers Accommodation - 450 Rooms (Stage 2)	149 Stowe Road, CALLIOPE QLD 4680	16-Jul-2013	
DA/687/2012	Workers Accommodation & Supporting Ancillary Uses	1195 Calliope River Road, WEST STOWE QLD 4680	03-Sep-2013	
DA/698/2012	Multiple Unit Residential (8 Units)	39 Stirrat Street, CALLIOPE QLD 4680	25-Feb-2013	OPW/462/2013, Road Works, Stormwater, Drainage Works and Earthworks
DA/755/2012	Workers Accommodation (1408 Rooms) & ERA # 63 (Sewage Treatment)	45 & 101 Calliope River Road RIVER RANCH QLD 4680	03-Jul-2014	
DA/813/2013	Multiple Unit Residential (9 Units)	21 Drynan Drive CALLIOPE QLD 4680	3-Feb-2014	
DA/815/2013	Reconfiguration of a Lot (1 into 10)	101 Siding Road BEECHER QLD 4680	4-Jun-2014	
DA/899/2013	Licensed Premises, Food Premises & Gaming Premises (Tavern & Drive-Through Bottle Shop)	2041 Dawson Highway CALLIOPE QLD 4680	18-Feb-2014	
DA/922/2013	Reconfiguring a Lot (1 into 246) in 12 Stages	2120 Dawson Highway CALLIOPE QLD 4680	23-Jun-2014	

TANNUM SANDS/ BOYNE ISLAND - MAJOR DEVELOPMENTS WITH DEVELOPMENT APPROVAL (TOWN PLANNING) BUT NOT UNDER CONSTRUCTION

Application Number	Description	Location	Approved	Associated Applications
DA/20549/2007	Preliminary Approval Overriding the Planning Scheme - Boyne Island Community Resort	Lot 1 & 3 SP 150256, Boyne Island Road, Lot 10 SP 171136 Jacaranda Drive & Lot 35 CTN 1238, Pioneer Drive, BOYNE ISLAND QLD 4680	07-Oct-2009	
DA/166/2010	Boyne Island Community Resort - Attached Townhouses (38 Units), 3 Tower Unit Complex (120 Units) and Hotel (100 rooms)	Lot 10 SP 171136 Jacaranda Drive, BOYNE ISLAND 4680	02-Apr-2012	
DA/369/2011	Sport and Recreation (Aquatic Centre)	Lot 10 SP 171136 Jacaranda Drive, BOYNE ISLAND 4680	20-Mar-2012	
DA/396/2011	Reconfiguring a Lot (1 into 6)	Lot 10 SP 171136, Jacaranda Drive, BOYNE ISLAND QLD 4680	02-Apr-2012	
DA/20634/2008	Material Change of Use - Residential Density & Reconfiguring a Lot - 1 lot into 45 lots	70 Silverton Drive, TANNUM SANDS QLD 4680	04-Oct-2011	OPW/258/2012, Road Works, Stormwater, Water Infrastructure, Drainage Works, Earthworks, Sewerage Infrastructure, Signage and Clearing Vegetation Under The Planning Scheme
DA/20668/2008	Reconfiguring of a Lot - Stage 9 Riverdowns Estate - 1 lot into 13 lots	12 Baruby Boulevard, BENARABY QLD 4680	10-Jun-2009	OPW/44/2009, Earthworks, Roadworks, Stormwater & Water Reticulation
DA/20673/2008	Material Change of Use - 9 Units	4 The Promenade, BOYNE ISLAND QLD 4680	15-Sep-2009	OPW/188/2011, Drainage Works, Earthworks, Vehicle Access BP/144/2012, Plumbing Work - Units (9)
DA/209/2010	Material Change of Use for Multiple Unit Residential (119 units), Motel (60 rooms and Restaurant), Commercial Premises (Conference Facility), Licensed Premises (Hotel & Bottle Shop) & Gaming Premises and Reconfiguring a Lot (11 into 3 & access	Lot 61 RP 608758, Pacific Avenue, TANNUM SANDS QLD 4680 30-32 Pacific Avenue, TANNUM SANDS QLD 4680 1-11 Donald Street, TANNUM SANDS QLD 4680	05-Jul-2011	

	easements)			
DA/288/2011	Preliminary Approval - Material Change of Use - Impact - Aged Persons Accommodation (Retirement Village - 144 units)	75 & 105 Tannum Sands Road, TANNUM SANDS QLD 4680	17-Apr-2012	
DA/325/2011	Reconfiguration of a Lot (1 into 18 and Balance Lot)	Lot 8 SP 182691, The Oaks Road, TANNUM SANDS QLD 4680	27-Jul-2011	
DA/434/2011	Multiple Unit Residential (5 Additional Units)	6 Wyndham Avenue, BOYNE ISLAND QLD 4680	18-Jan-2012	BP/1125/2012, Plumbing Works - Units (5) OPW/424/2012, Roadworks, Stormwater, Water Infrastructure and Drainage works
DA/495/2011	Riverstone Rise Precinct 1 - Stage 5A, 5B, 5C & 5D (Total 93 Lots)	Lot 33 & 36 P4041, Lot 1 RP612624, Lot 3 RP612625 and Lot 11 RP801171, Parish of Boyne 60 Findling Road, BOYNE ISLAND QLD 4680 15 Dennis Street, BOYNE ISLAND QLD 4680		OPW/505/2013, Roadworks, Stormwater, Water Infrastructure & Sewerage Infrastructure
DA/656/2012	Awoonga Country Stage 3 (1 into 23 plus Balance Lot)	140 Awoonga Dam Road, BENARABY QLD 4680	08-Aug-2013	
DA/874/2013	Reconfiguring a Lot (1 into 72) - Riverstone Rise Precinct 2 - Stage 6 (37 Lots) & Stage 7 (34 Lots)	Lot 9503 SP 256735, Riverstone Rise Boulevard, BOYNE ISLAND QLD 4680	15-Jan-2014	
DA/878/2013	Multiple Unit Residential (25 Units)	Lot 1 RP 619033, Hampton Drive, BOYNE ISLAND QLD 4680	02-Jul-2013	
DA/927/2013	Reconfiguring a Lot (2 into 13)	9-13 Applin Place TANNUM SANDS QLD 4680	13-Feb-2014	

AGNES WATER/ 1770 - MAJOR DEVELOPMENTS WITH DEVELOPMENT APPROVAL (TOWN PLANNING) BUT NOT UNDER CONSTRUCTION

Application Number	Description	Location	Approved	Associated Applications
DA/277/2011	Multiple Dwelling (6 units) - Superseded Planning Scheme for former Miriam Vale Shire	Lot 19 RP 861421, Thomson Street, AGNES WATER QLD 4677	29-May-2012	
DA/304/2011	Stage 1 - Commercial Premises, Catering Premises & Shop and Stage 2 - Accommodation Building (20 Bed Backpacker Hostel) & Caretaker's Residence.	8 Agnes Street, AGNES WATER QLD 4677	02-Aug-2011	
DA/41854/2007	Reconfiguring a Lot (1 into 17)	2654 Round Hill Road, AGNES WATER QLD 4677	18-Mar-2011	OPW/595/2014, Road Works, Stormwater, Earthworks, Landscaping & Clearing Vegetation Under the Planning Scheme
DA/44596/2008	Agnes Shores Estate Stage 12-14 Reconfiguring a Lot - 2 Lots Into 69 Lots Over 3 Stages Including New Road and Balance Lot	Lot 3 SP 221743, Round Hill Road, AGNES WATER QLD 4677 Lot 102 SP 176830, Round Hill Road, AGNES WATER QLD 4677 Lot 204 SP 151245, Seascope Close, AGNES WATER QLD 4677	17-Aug-2011	
DA/44743/2009	Agnes Shores Estate Stage 2 & 4 Reconfiguring a Lot (2 lots into 71 Residential Lots, Park and Drainage Reserve over 4 Stages)	Lot 102 SP 176830, Round Hill Road, AGNES WATER QLD 4677 Lot 204 SP 151245, Seascope Close, AGNES WATER QLD 4677	17-Dec-2010	
DA/44882/2009	Reconfiguring a Lot (1 into 18)	Lot 2 SP 117407, Captain Cook Drive, AGNES WATER QLD 4677	08-Aug-2011	
DA/44883/2009	Reconfiguring a Lot (1 Lot into 20 Lots)	Lot 2 SP 117407, Captain Cook Drive, AGNES WATER QLD 4677	08-Aug-2011	
DA/44884/2009	Reconfiguring a Lot (1 into 21)	Lot 2 SP 117407, Captain Cook Drive, AGNES WATER QLD 4677	08-Aug-2011	
DA/470/2011	Multiple Dwelling (6 Units)	6 Ocean Ridge & 3 The	30-Apr-2012	

DA/595/2012	Accommodation Building (Motel), Caravan & Cabin Accommodation, Catering Premises, Shop, Indoor & Outdoor Recreation, Conference Room, Maintenance & Service Buildings in Two Stages	Promenade, Agnes Water Lot 4 RP 897424, Captain Cook Drive, AGNES WATER QLD 4677	20-Aug-2013	
DA/604/2012	Multiple Dwelling (5 Units) & Commercial Premises (Real Estate Office)	4 Jeffery Court, AGNES WATER QLD 4677	07-Sep-2012	
DA/721/2012	Reconfiguring a Lot (2 into 18)	Lot 205 SP 160911, Round Hill Road AGNES WATER QLD 4677	23-Jan-2014	
DA/814/2013	Educational Establishment, Reconfiguration a Lot (2 into 4) & Future Community Title Subdivision	Pt (a) Lot 213 SP 257657, Round Hill Road AGNES WATER QLD 4677 & Lot 4 SP 196790, Round Hill Road AGNES WATER QLD 4677	30-May-2014	OPW/517/2013, Road Works, Stormwater, Water Infrastructure, Drainage Works, Earthworks, Sewerage Infrastructure and Clearing Vegetation under the Planning Scheme OPW/592/2014, Water Infrastructure, Drainage Works & Earthworks
DA/9/2009	Reconfiguring a Lot (1 into 11)	565 & 570 Springs Road Agnes Water Queensland 4677	14-Mar-2011	
DA/926/2013	Multiple Dwelling (6 units)	Lot 3 SP 164002, Beaches Village Circuit AGNES WATER QLD 4677	19-Feb-2014	OPW/583/2014, Roadworks, Stormwater & Water & Sewerage Infrastructure

OTHER - MAJOR DEVELOPMENTS WITH DEVELOPMENT APPROVAL (TOWN PLANNING) BUT NOT UNDER CONSTRUCTION

Application Number	Description	Location	Approved	Associated Applications
DA/20648/2008	Preliminary Approval Overriding the Planning Scheme - Material Change of Use - 220 Dwellings & Commercial Land Use & Reconfiguring a lot (1 into 225 under Community Management Scheme) & Environmentally Relevant Activity 15B (Sewerage Treatment)	53785 Bruce Highway, MOUNT LARCOM QLD 4695	19-Jul-2011	
DA/398/2011	Worker's Accommodation (405 Units) and Environmentally Relevant Activity (ERA no. 63 Sewerage Treatment)	Lot 45 SP 235946 Forest Road, TARGINIE QLD 4680 Lot 45 SP 235946, Forest Road, TARGINNIE QLD 4694	21-Nov-2013	
DA/973/2014	Community Facility (Expansion to existing Training Centre including 24 Accommodation Units & ancillary facilities) and ERA No. 63 - Sewerage Treatment	Lot 11 RP 841674, Bruce Highway GINDORAN QLD 4676	27-Jun-2014	

SECTION 3: MAJOR DEVELOPMENTS PENDING DEVELOPMENT APPROVAL (TOWN PLANNING)

Application Number	Description	Location	Lodged	Status
DA/439/2011	Reconfiguring a Lot (2 into 35)	2 Chamberlain Road BURUA QLD 4680	24-Apr-2014	Info Response
DA/788/2013	Caravan Park - 771 sites - 2 Stage Development	72 Old Bruce Highway, BURUA QLD 4680	25-Jan-2013	Info & Referral
DA/796/2013	Multiple Unit Residential (12 Units) & Access Easement	6-8 Flinders Street, WEST GLADSTONE QLD 4680 38-38A Kent Street, WEST GLADSTONE QLD 4680	06-Feb-2013	Info Response
DA/798/2013	Preliminary Approval - Multiple unit Residential (26 Units) Development Permit - Small Lot Housing and Reconfiguration of a Lot (21 Lots)	Lot 37 RP 612326, Bradford Road, TELINA QLD 4680	08-Feb-2013	Awaiting Notice of Compliance
DA/800/2013	Preliminary Approval Overriding the Planning Scheme (Commercial Precinct), Material Change of Use - Impact - Service Station, Food Premises & Shop, Reconfiguration of a Lot (1 into 2) and ERA for Chemical Storage & Sewerage Treatment	45 Calliope River Road, RIVER RANCH QLD 4680	14-Feb-2013	Under Assessment
DA/802/2013	Residential Subdivision Vantage Estate -Stages 11, 12 & 13 & Reconfiguring a Lot (1 into 141)	Lot 504 SP 233801, Kirkwood Road, NEW AUCKLAND QLD 4680	20-Feb-2013	Info & Referral
DA/946/2013	Multiple Unit Residential (18 Units)	51 Tank Street WEST GLADSTONE QLD 4680	3-Dec-2013	Under Assessment
DA/905/2013	Transport & Storage (Machinery Depot)	1929 Gladstone-Mount Larcom Road MOUNT LARCOM QLD 4695	26-Aug-2013	Awaiting Public Notification
DA/933/2013	Light Industry (Seafood Processing)	Lot 1 SP 212170, Rocky Crossing Road ROUND HILL QLD 4677	9-Oct-2013	Info Response
DA/910/2013	Reconfiguring a Lot (1 into 8)	14 Chapman Street MIRIAM VALE QLD 4677	3-Sep-2013	Info Response
DA/943/2013	5 into 485 (Stage 8-23) - Riverstone Rise Precinct 2	60 Findling Road BOYNE ISLAND QLD 4680	7-Nov-2013	Info Response
DA/980/2014	Change in Density from Community Use to Residential	Lot 159 CTN 1545, Tarrawonga Drive	4-Mar-2014	Under Assessment

and Reconfiguring a Lot - Stage 1 (32 lots, easement & Balance Lot) & Stage 2 (32 Lots)

CALLIOPE QLD 4680

DA/963/2014	Change in Density from Rural to Rural Residential & Reconfiguration of a Lot (1 into 17)	40 Weeroona Road BURUA QLD 4680	30-Jan-2014	Under Assessment
DA/965/2014	Community Title Subdivision (1 into 5 and Common Property)	Lot 1000 SP 261774, Broadacres Drive TANNUM SANDS QLD 4680	31-Jan-2014	Info Response
DA/1008/2014	Preliminary Approval - Change in Density (Urban Expansion to Commercial Zone) & Showroom and Development Permit - Reconfiguring a Lot (1 into 4)	Lot 243 SP 174113, Kirkwood Road KIRKWOOD QLD 4680	10-Jun-2014	Info & Referral
DA/989/2014	Extension of Shopping centre	2041 Dawson Highway CALLIOPE QLD 4680	2-Apr-2014	Public Notice
DA/997/2014	Sport & Recreation (Speedway)	Pt(zz) Lot 1 RP 902548, Jono Porter Drive BENARABY QLD 4680	28-Apr-2014	Info & Referral
DA/998/2014	Extension of Food Premises	21 Drynan Drive CALLIOPE QLD 4680	28-Apr-2014	Info & Referral
DA/999/2014	Motel & Shopping Centre	49-51 Yarroon Street GLADSTONE QLD 4680	12-May-2014	Info & Referral
DA/1005/2014	9 Display Homes	Lot 1000 SP 261774, Broadacres Drive TANNUM SANDS QLD 4680	28-May-2014	Lodged
DA/1007/2014	Sport & Recreation	125 Racecourse RoadCALLIOPE QLD 4680	4-Jun-2014	Info & Referral
DA/993/2014	Reconfiguring a Lot (1 into 5)	1 Watermark Avenue AGNES WATER QLD 4677	22-Apr-2014	Under Assessment