

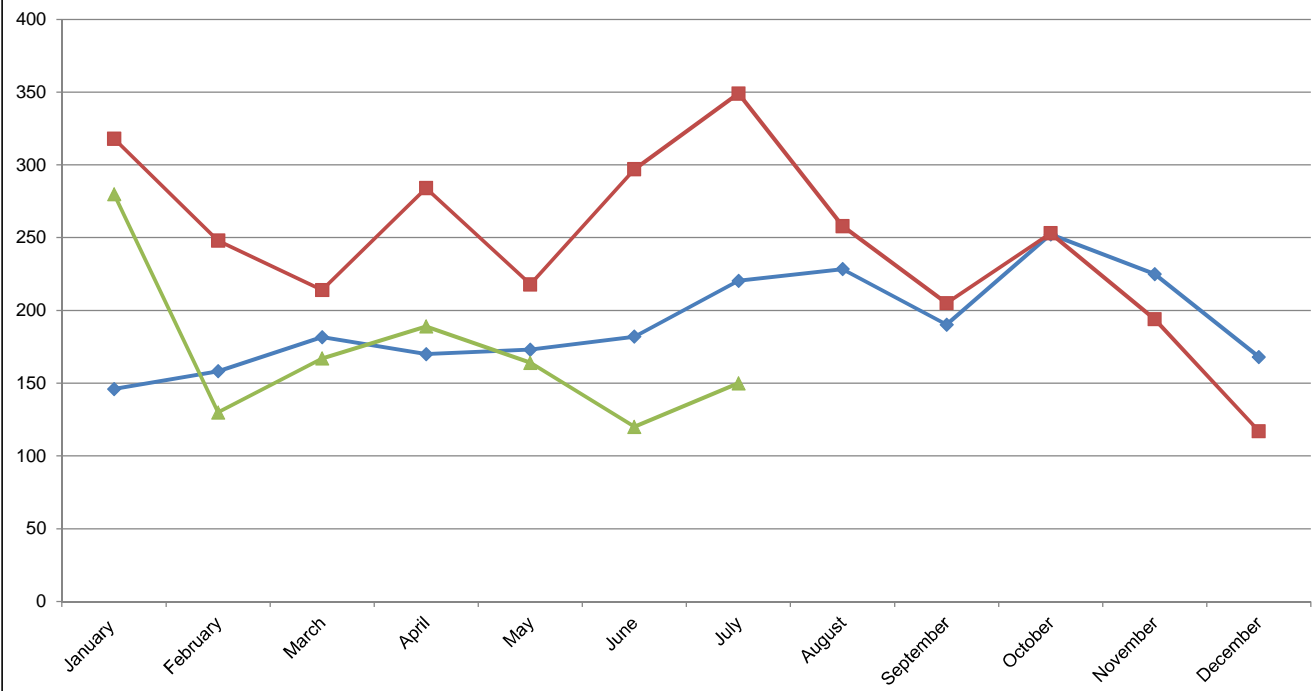


Building & Plumbing End of Month Report for July 2014

Building & Plumbing Approvals

	Agnes Water - Seventeen Seventy		Boyne Island - Tannum Sands - Benaraby - Wurdong		Calliope (incl. Beecher and Burua)		Clinton - Byellee - Callemondah		Gladstone City		Kin Kora - Sun Valley		New Auckland - Kirkwood		Rural South East - Miriam Vale		Rural West		South Gladstone - Barney Point		Telina - South Trees - Glen Eden - Toolooa		West Gladstone		TOTAL	
	July	YTD	July	YTD	July	YTD	July	YTD	July	YTD	July	YTD	July	YTD	July	YTD	July	YTD	July	YTD	July	YTD	July	YTD	July	YTD
Building Work																										
Dwelling	4	28	3	51	4	46	1	8	0	0	0	1	3	64	3	15	2	6	0	2	3	39	0	2	23	263
Duplex	0	10	0	8	0	4	0	9	0	1	0	0	3	11	0	4	0	1	0	1	0	7	0	1	3	29
Units/Accommodation	0	1	0	4	0	0	0	1	0	0	0	0	0	1	0	0	0	0	0	0	0	0	0	0	0	0
Institution	0	0	0	0	0	0	0	0	0	0	0	0	0	0	0	0	0	0	0	0	0	0	0	0	0	0
Demolition	0	0	1	1	0	0	0	0	0	0	0	0	0	0	0	0	0	0	0	0	0	0	0	3	1	8
Pool/Spa	1	4	0	15	1	13	0	3	0	0	1	3	2	10	1	6	1	1	1	5	3	7	0	0	11	70
Commercial/Industrial	1	6	0	3	1	2	0	10	2	13	0	1	0	2	0	3	1	8	1	4	1	4	0	5	7	58
Other Structures (Class 1a/10a/10b)	7	30	18	98	7	70	6	41	2	10	5	17	5	39	4	34	2	11	4	29	8	49	5	24	73	452
TOTAL	13	69	22	176	13	132	7	71	4	25	6	22	13	124	8	58	6	26	6	41	15	100	5	36	118	880
Plumbing Work																										
Sewered - Dwelling	3	17	2	39	0	20	1	14	1	2	0	1	8	80	0	1	0	0	0	1	3	32	0	5	18	212
Non-Sewered - Dwelling	0	5	2	8	2	18	0	0	0	0	0	0	0	0	1	12	0	4	0	0	0	1	0	0	5	48
Sewered - Commercial/Industrial	0	1	0	0	0	0	0	1	0	0	0	0	0	0	0	0	0	0	0	3	0	1	0	1	0	7
Non-Sewered - Commercial/Industrial	0	0	0	0	0	0	0	0	0	0	0	0	1	2	0	0	0	0	0	0	0	0	0	0	1	2
Sewered - Additions	1	1	1	1	0	2	1	1	0	0	0	1	0	0	0	0	0	0	0	0	0	0	0	0	3	6
Non-Sewered - Additions	0	0	2	2	0	0	0	0	0	0	0	0	0	0	0	1	0	0	0	0	0	0	0	0	2	3
Other	0	0	0	0	0	1	0	2	0	1	0	0	0	2	0	20	0	2	1	1	0	0	0	2	1	31
TOTAL	4	24	7	50	2	41	2	18	1	3	0	2	8	82	2	36	0	6	1	5	3	34	0	8	30	309
TOTAL APPROVALS	17	93	29	226	15	173	9	89	5	28	6	24	21	206	10	94	6	32	7	46	18	134	5	44	148	1189

Total Building & Plumbing Approvals



- 5 Year Average (2009-2013)
- 2013
- 2014