



Gladstone Regional Council

Council Policy

Title	COUNCIL INVOLVEMENT IN RURAL FIRE EMERGENCIES
Policy Number	P-2015/35
Responsible Directorate	ENGINEERING SERVICES
Responsible Officer	MANAGER ROAD SERVICES
Date of Adoption	17 NOVEMBER 2015
Resolution Number	G/15/2644
Date Review Due	17 NOVEMBER 2018

1.0 PURPOSE:

The purpose of this policy is to outline how and to what extent Council will assist with provision of plant, equipment and operators during rural fire emergencies. This policy does not override authorities held by relevant agencies to requisition plant and equipment under relevant legislation¹.

2.0 SCOPE:

This policy applies to all Rural Areas in the region.

This policy does not apply to arrangements whereby Council carries out agreed routine and programmed maintenance of fire trails.

3.0 RELATED LEGISLATION:

Nil

4.0 RELATED DOCUMENTS:

- Gladstone Region Local Disaster Management Plan
- Gladstone Regional Council's Rural Fire Brigades Funding Arrangements Policy

¹ As, for example, where an emergency situation has been declared under the *Public Safety Preservation Act 1986* and the relevant officer under that Act directs that a resource in Council's control be placed under the control of that officer Or Council has been issued with a direction under the *Disaster Management Act 2003* to make available resources.

- Procedure for Issuing Plant to Rural Fire Service and Queensland Fire and Emergency Services Department

5.0 DEFINITIONS:

To assist in interpretation of this policy the following definitions apply:-

"Council" - means Gladstone Regional Council

"Firecom" - means the QFES Communications Centre set up for taking reports of fires [e.g. 000 (triple zero) calls] and responding accordingly.

"Local Disaster Control Centre (LDCC)" - means a centre established to operationalise the LDMG decisions, plan and implement strategies and activities on behalf of the LMDG during responses to a disaster event.

"Local Disaster Management Group (LDMG)" - means the group set up by Council to ensure that disaster management and operations in an area are consistent with State policy framework.

"Natural Disaster Declaration" - means a declaration made under the *Disaster management Act 2003*.

"Queensland Fire & Emergency Service (QFES)" - means the group set up as the primary provider of fire and emergency services in Queensland, and to provide the coordination and planning for state wide emergency services adopting an 'all hazards' approach to emergency management.

"Rural Areas" means areas in the Council area outside of the areas serviced by the Urban Fire Brigades in the Council area.

"Rural Fire Emergency" means an emergency identified by Firecom resulting in a request for assistance by Firecom or a Natural Disaster Declaration involving a fire (or fires) in a Rural Area of Council's area.

"Rural Fire Service (RFS)" - means entities set up by QFES with the primary role of fire mitigation for rural, semi-rural and some urban fringe areas.

"Rural Fire Brigade (RFB)" - means a entities established by QFES to assist in mitigating the risk to communities from the impact of wildfire.

6.0 POLICY STATEMENT:

6.1 BACKGROUND

The lead agency responsible for the threat posed by rural fire is the Rural Fire Service (RFS) division of Queensland Fire and Emergency Services (QFES).

The RFS will coordinate its own resources and volunteers when responding to a rural fire emergency.

There are generally two types of fire to which Council may be requested to provide assistance.

1. A local emergency with a formal request for assistance from the Firecom.
2. In times of a Natural Disaster Declaration the Local Disaster Management Group (LDMG) is convened and this group oversees a coordinated response to the fire threat. The LDMG will set up a Local Disaster Coordination Centre (LDCC) which will be staffed by representatives for various disaster combat and support agencies. In times of a Natural Disaster Declaration if the RFS requires assistance in their effort to manage the fire threat the RFS - LDCC Liaison Officer will seek assistance from Council's Liaison Officer in the LDCC.

6.2 POLICY

- 6.2.1 Council will provide plant and equipment (with operators) when requested by Firecom, or Council's LDCC Liaison Officer during times of a Natural Disaster Declaration, under the following conditions:-
- a. The request is for a response within the Council area;
 - b. No, or insufficient, Council subcontractors are available to respond
 - c. Council plant and equipment and operators are available to leave their current worksite in a safe condition;
 - d. Plant and equipment (including operators) are only required to provide a support/protection role and not required to directly fight a fire;
 - e. Operators are under the direct supervision of the trained QFES "Officer-in-Charge" at the scene;
 - f. Plant operators have two way communications with the trained QFES "Officer-in-Charge" at the scene; and
 - g. Plant Operators (grader or loader etc) are not required to work during hours of darkness.
- 6.2.2 Where assistance is provided, the Council staff responding to the request are to register the details of their response with the Council Call Centre, and the Call Centre staff are to advise the Director Engineering Services of the response details via an email.
- 6.2.3 Where possible, the State Government is to be requested to cover the full cost of any assistance provided by Council. Any shortfall in recoupment of costs incurred will be charged against Council's Rural Fire Brigades Assistance budget.

7.0 ATTACHMENTS:

1. Procedure for Issuing Plant to Rural Fire Service and Queensland Fire and Emergency Services Department

8.0 REVIEW TRIGGER:

This policy will be reviewed when any of the following occur:-

1. The related legislation/documents are amended or replaced.
2. Other circumstances as determined from time to time by a resolution of Council
3. Periodic Review – 3 years from date of adoption.

TABLE OF AMENDMENTS		
Originally Adopted	18 August 2009	09/473
Amendment 1	3 December 2013	G/13/1826
Amendment 2	17 November 2015	G/15/2644
Amendment 3	<INSERT DATE COUNCIL MEETING>	<INSERT RESOLUTION NUMBER>

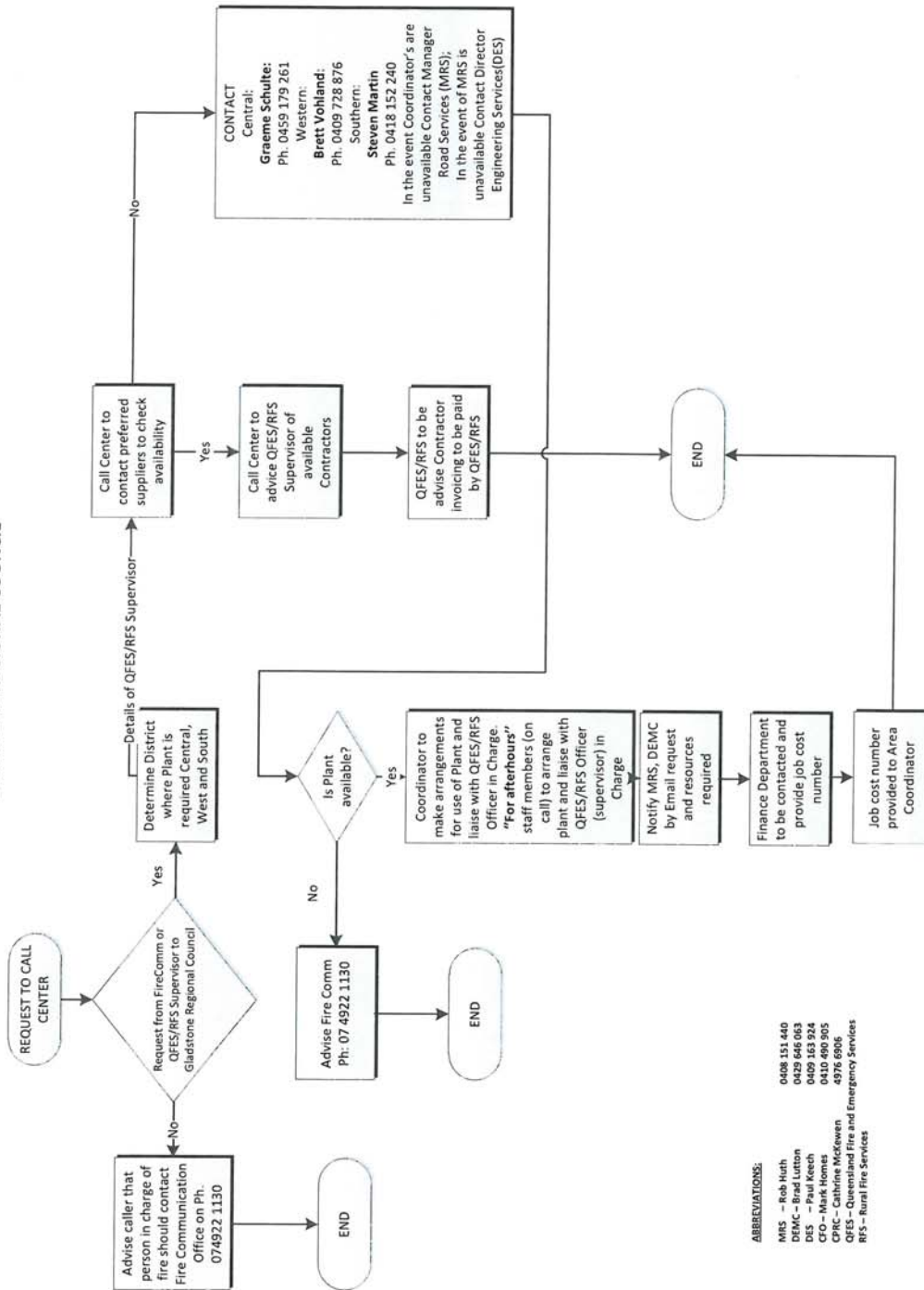
.....
STUART RANDLE
CHIEF EXECUTIVE OFFICER

ATTACHMENT 1



PROCEDURE FOR ISSUING PLANT TO RFS/QFES

GLADSTONE REGIONAL COUNCIL



- ABBREVIATIONS:
- MRS – Rob Huh 0408 151 440
 - DEMC – Brad Luton 0429 646 063
 - DES – Paul Keech 0409 163 924
 - CFO – Mark Homes 0410 490 905
 - CPIC – Cathrine McKewen 4976 6906
 - QFES – Queensland Fire and Emergency Services
 - RFS – Rural Fire Services