

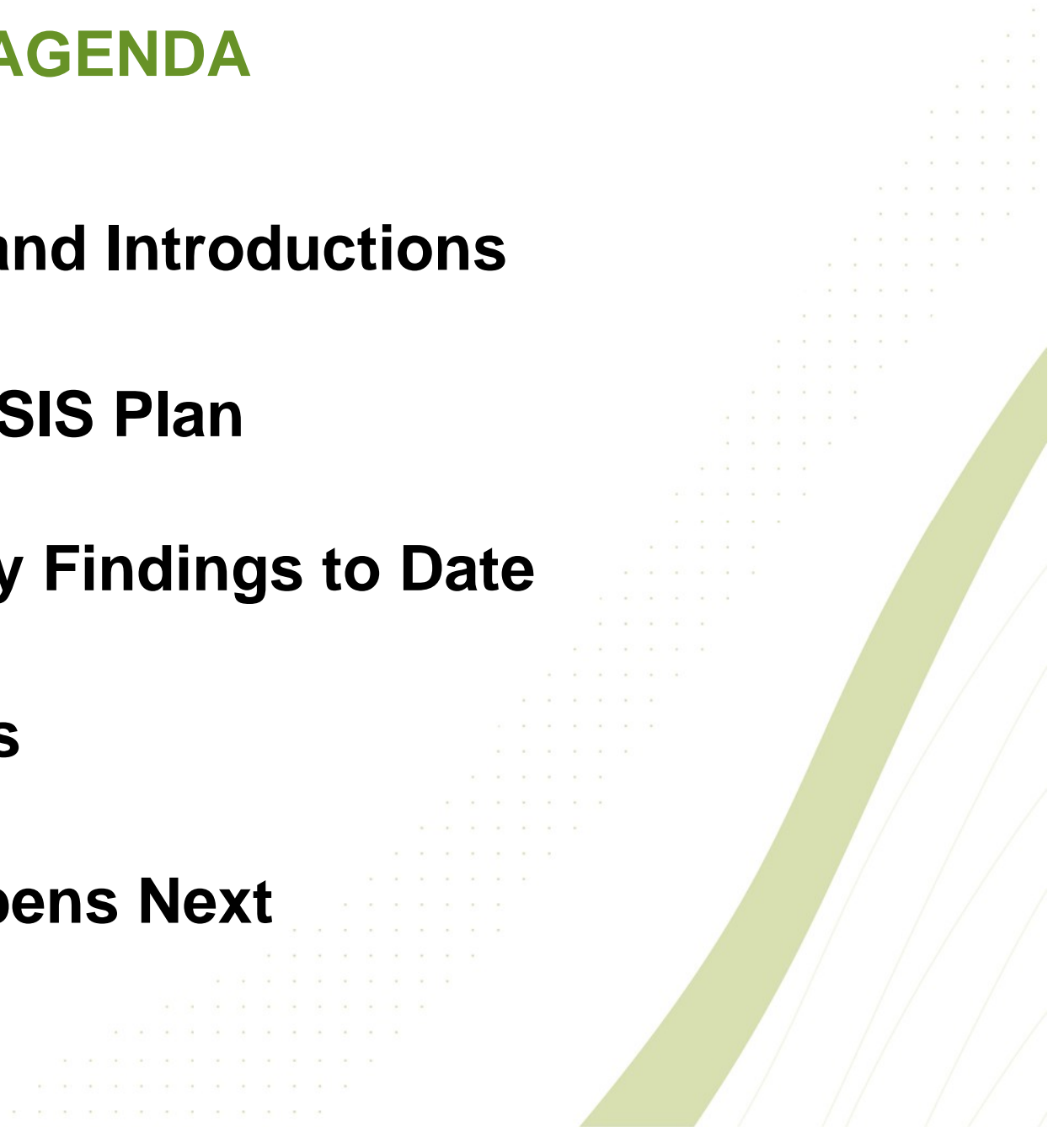
Social Infrastructure Strategic Plan for the Gladstone Region

Community Consultation Presentation
November 2009



PROPOSED AGENDA

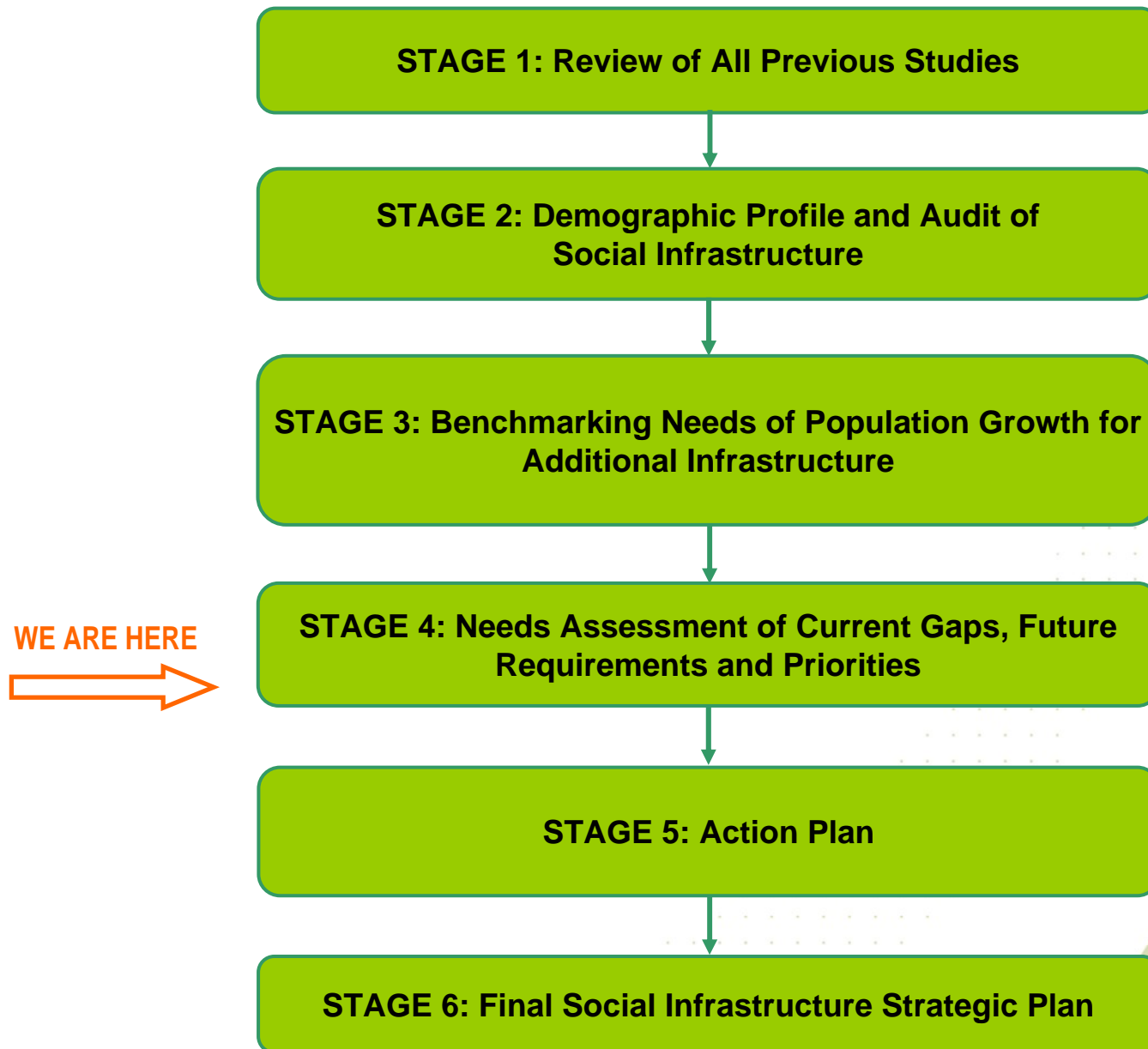
- **Welcome and Introductions**
- **About the SIS Plan**
- **Preliminary Findings to Date**
- **Your Views**
- **What Happens Next**



ABOUT THE SIS PLAN

- **The objective of the SIS Plan is to *‘inform and guide future planning activities and investment decisions for strategic social infrastructure in the region’* over the next 20 years**
- **What *is* Social Infrastructure?**
 - **Community Facilities** like schools, hospitals, police/fire/ambulance stations, child care centres, youth facilities, libraries, recreation facilities, facilities for older people and people with disabilities, halls and community centres
 - **Community Services** like health services, children’s and family services, multicultural services, youth development, welfare and support services
 - **Community Services Networks** like interagencies
- **Additionally the Project Outcomes Will:**
 - Identify possible funding sources
 - Help local government and the community sector to advocate for funding
 - Allow Council and State Government, and other providers, to better prioritise scarce social infrastructure funds.

WHAT WE'VE DONE – The Overall Process



WHAT WE'VE DONE - Consultation to Date

- **Project webpage (on Council's website)**
 - **Project Updates 'SIS Plan Update'**
 - **Proformas to service providers**
 - **Focus Groups**
 - **SIS Plan Working Group**
 - **Infrastructure Working Group (State Government)**
 - **Meetings with Industry**
 - **Community workshops (17th – 21st November)**
- 

Some Things We Have Learnt?

Demographic Profile

- **Population of Gladstone Council area will nearly double to 2031 (from 54,000 (2006 census figures) to just under 100,000 people)**
- **All areas will experience continued growth (subject to finalisation of new planning scheme) e.g. Gladstone urban area will increase from 30,900 to 39,300**
- **Boyne Island/Tannum Sands and Calliope will have the most significant growth up to 2031**
 - Boyne/Tannum 10,900 to 26,300
 - Calliope 3,700 to 16,800
- **Agnes Water/Seventeen Seventy is expected to experience high growth (but overall population will remain relatively low)**
 - Agnes Water 1,790 to 6,800 (without tourists)
- **Less growth other areas**
 - Rural South East/Miriam Vale 3,600 to 9,100
 - Rural West 2,900-3,700

Some Things We Have Learnt: Facilities and Services

- **Key regional facilities and services are mainly located in Rockhampton, some in Bundaberg**
- **Existing provision of facilities and services in Gladstone region is focused in Gladstone CBD**
- **Relatively poor provision of facilities and services in outer suburbs of Gladstone urban area**
- **Reasonable provision of facilities and services in outlying communities relative to size – many functioning in service roles beyond level of population**
- **Limited social infrastructure in small rural or coastal villages.**

Preliminary Findings to Date – Stage 4

- **Undertaken a Needs Assessment that synthesizes:**
 - the audit
 - demographic profile
 - literature review
 - benchmarking outcomes
 - consultation findings to date
- **Identified a set of preliminary needs for the region *to 2031***
- **We need to know if we are right**

What are the Needs in This Area?

Gladstone and Surrounds:

Short/Medium Term

- A one stop community centre including:
 - Community Advisory Service/Neighbourhood Centre functions
 - Youth drop-in centre
 - Multicultural Resource Centre
 - Children's and Family Centre
 - Centred around a cultural and artistic precinct (e.g. an amphitheatre, water park/sculpture park etc)
- Upgrading of the Entertainment Centre
- Upgrade to Gladstone Aquatic Centre
- More children's playgrounds in outer areas and improved playgrounds generally
- More long day child care places, more places for babies and more flexible child care
- More early intervention and family support programs

Gladstone and Surrounds Cont'd

- More facilities in parks for younger people
- More youth housing, financial and life skills programs
- More training to build the capacity of workers already in the area
- Another disability respite 24/7 facility
- A second aged care day respite centre
- A tri-care residential aged care facility
- Other appropriate housing for older people
- The proposed Murri Centre at Police Creek, including a larger indigenous health facility
- More public and community, crisis and transitional housing

Gladstone and Surrounds Cont'd

Longer Term

- An upgraded TAFE facility
- Possible expansion/ or relocation of Gladstone police, fire and ambulance stations
- Expansion of the Art Gallery/Museum
- Addition of an Arts Development Space in CBD
- A high standard multi-sporting complex including an indoor centre (staged to 2031)
- Possible need for a primary school to serve outer areas
- A second or expanded Botanic Gardens?
- Barney Point foreshore redevelopment, linked to CBD waterfront in longer term?

What are the Needs in This Area?

Calliope Catchment:

Short/Medium Term

- Expansion of the police station
- A possible second primary school
- Additional kindergartens
- Recreation facilities for young people

Calliope Catchment Cont'd

Longer Term

- A small community health centre
- A possible high school
- Expansion of Tannum Sands State High School
- Access to TAFE courses
- Expansion of the library
- A youth centre
- Recreation facilities for young people
- Appropriate accommodation for older people
- Additional playing fields and courts

What are the Needs in This Area?

Boyne Island/Tannum Sands Catchment:

Short/Medium Term

- A second kindergarten at Tannum Sands
- A child care facility at Benaraby
- A youth bus
- A youth centre
- Children's playgrounds and improved playgrounds generally
- More facilities in parks for younger people
- A swimming pool (within 5 years)
- Expansion of the community centre or a second smaller community centre at Tannum Sands
- A dedicated art gallery
- A day respite centre for older people

Boyne Island/Tannum Sands Catchment Cont'd

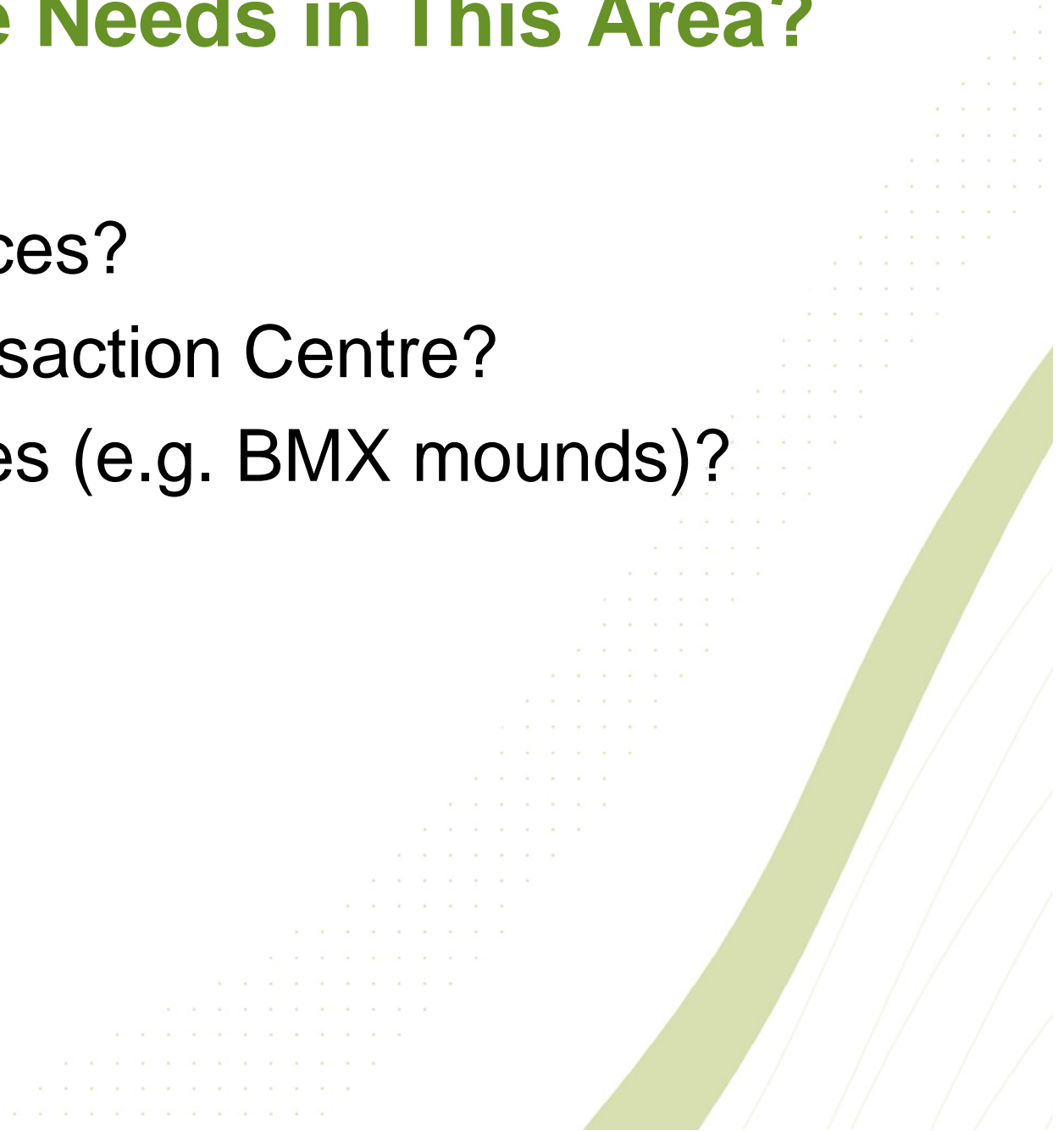
Longer Term

- A community health centre
- A possible additional primary school
- Expansion of Tannum Sands State High School
- A small TAFE facility
- Expansion of the library
- Possible second BMX track?
- Possible expansion of police and fire stations
- Additional playing fields and courts

What are the Needs in This Area?

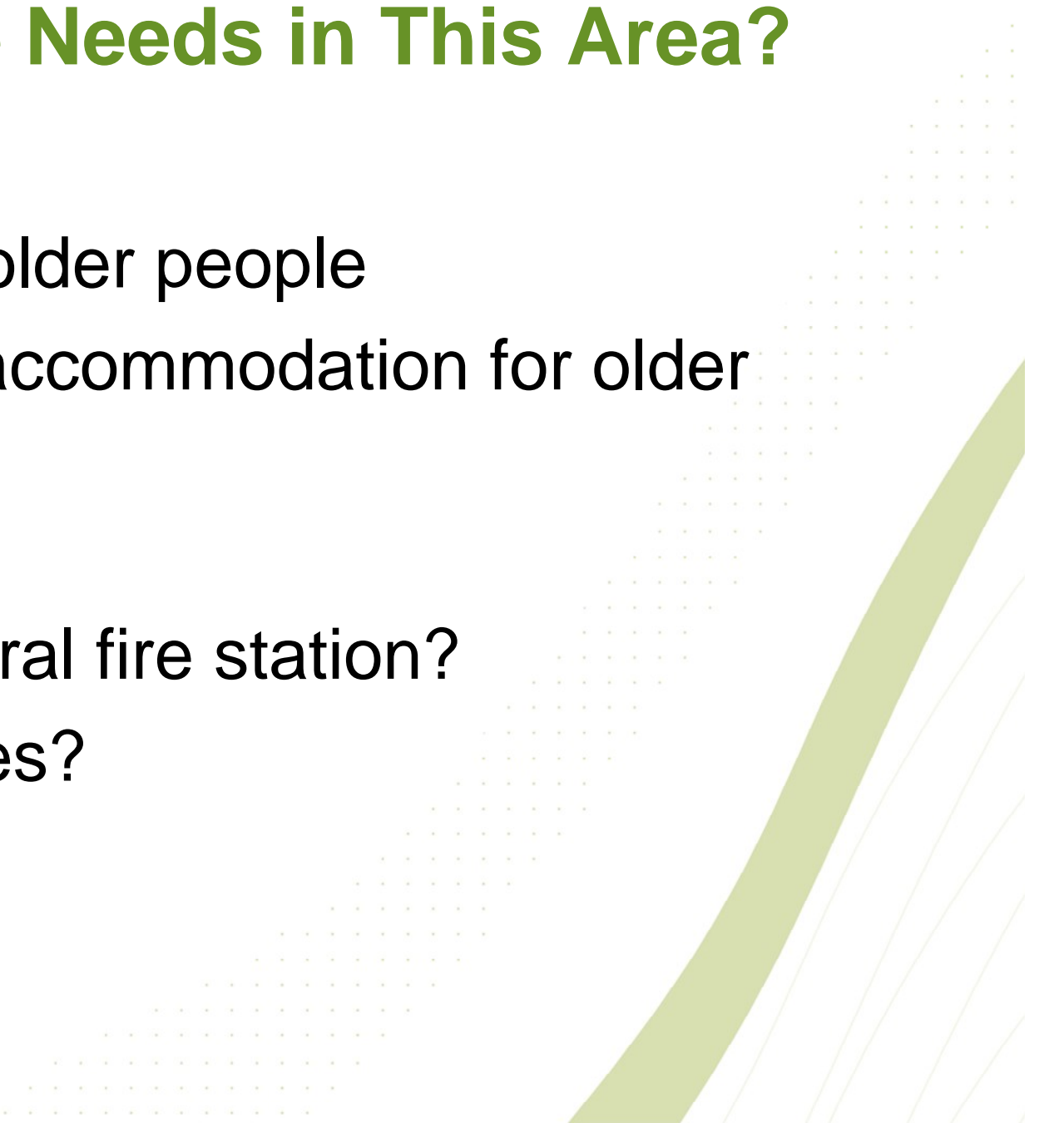
Boyne Valley:

- Library services?
- A Rural Transaction Centre?
- Youth facilities (e.g. BMX mounds)?



What are the Needs in This Area?

Mount Larcom:

- Services for older people
 - Appropriate accommodation for older people
 - Child care?
 - Need for a rural fire station?
 - Youth services?
- 

What are the Needs in This Area?

Rural South East / Miriam Vale Catchment:

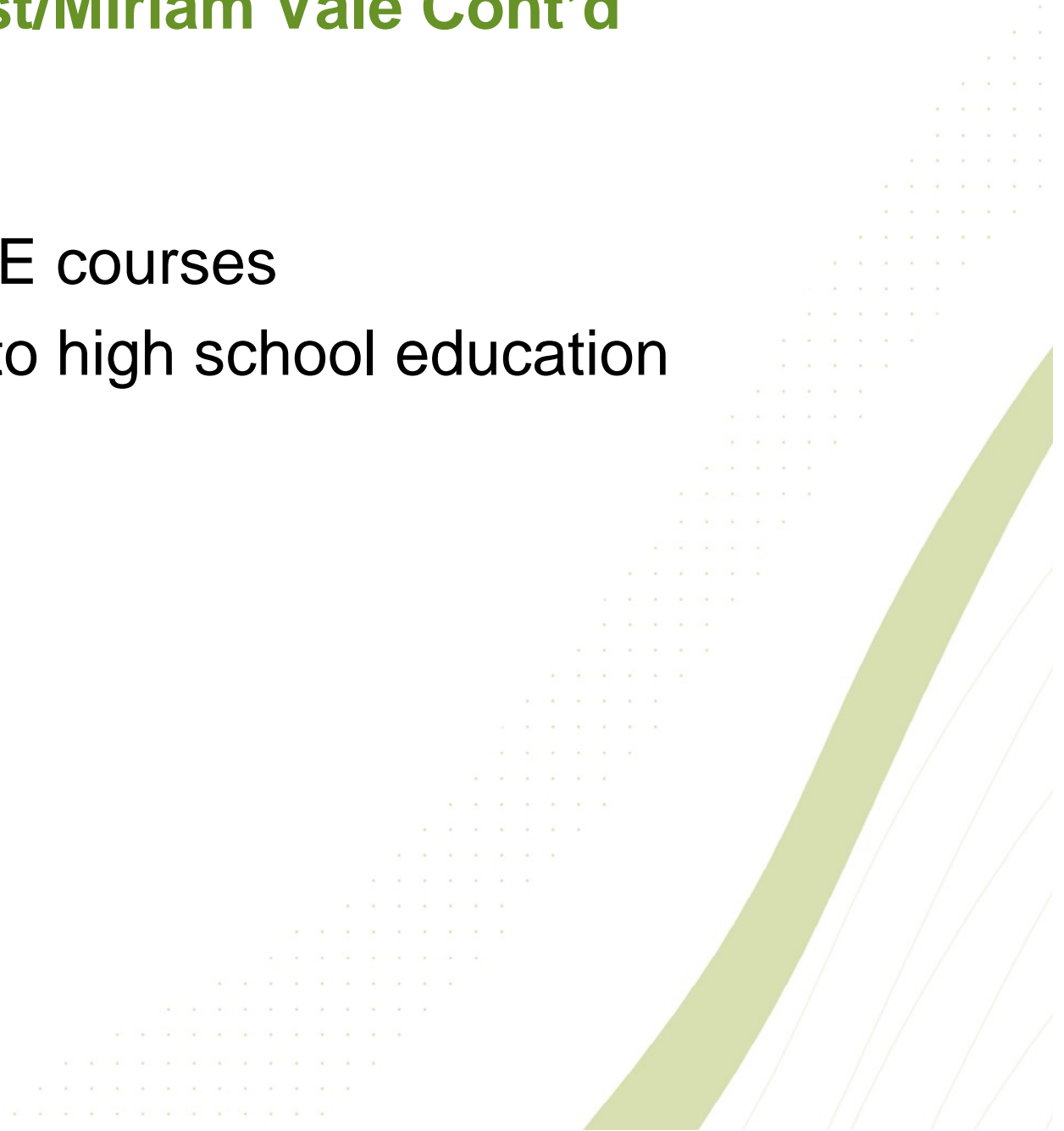
Short/Medium Term

- More access to Home and Community Care services for older people (awareness?)
- Need for appropriate accommodation for older people
- Community transport to access health and other services
- Child care?
- Recreational facilities for young people
- Hall at Baffle Creek?
- Police presence at Baffle Creek?
- Ongoing upgrading and maintenance of halls at Rosedale and Lowmead

Rural South East/Miriam Vale Cont'd

Longer Term

- Access to TAFE courses
- Better access to high school education



What are the Needs in This Area?

Agnes Water/Seventeen Seventy Catchment:

Short/ Medium Term

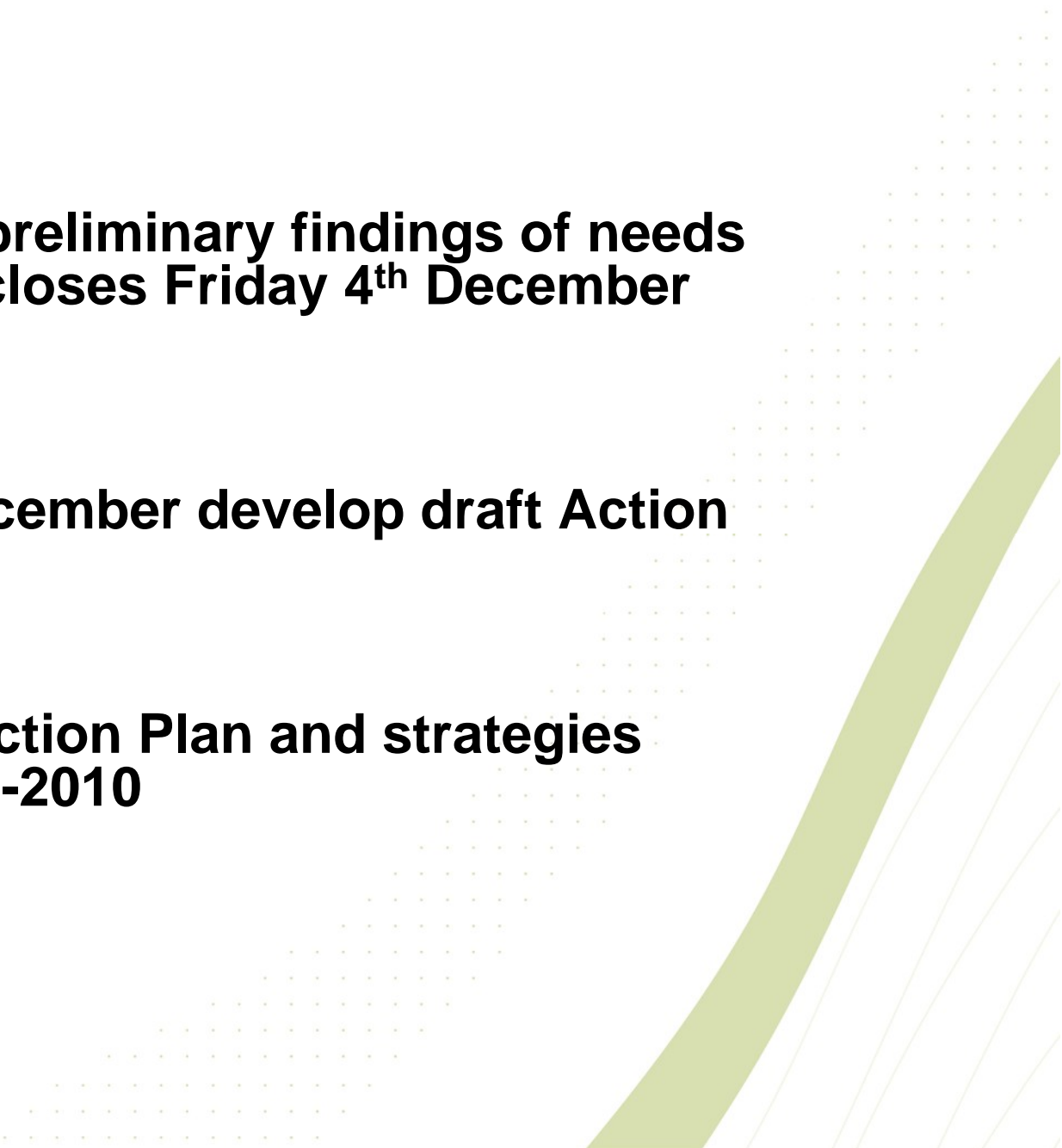
- Small community facility in Turkey Beach (meeting room and one to two offices)
- Appropriate accommodation for older people
- Funding for the youth group
- Community or public transport to access health and other services
- Family support and drug and alcohol services

Agnes Water/Seventeen Seventy Cont'd

Longer Term

- Expansion of the primary school
- Provision of high school education
- Access to TAFE courses
- Review of level of ambulance provision
- Review of policing levels, particularly at peak times

What Next?

- **Feedback on preliminary findings of needs assessment (closes Friday 4th December 2009)**
 - **November-December develop draft Action Plan**
 - **Displays on Action Plan and strategies February 2009-2010**
- 

This document was created with Win2PDF available at <http://www.daneprairie.com>.
The unregistered version of Win2PDF is for evaluation or non-commercial use only.