



Development Services

3/2013

Subject: DEVELOPMENT STATISTICS – JANUARY 2013

File Reference: DB10.2

The information below is provided for the month of November 2012 in the following areas:-

- New planning applications lodged
- Delegated planning approvals
- Council planning approvals
- Graph Showing Planning Lodgements & Approvals
- New operational works applications lodged
- Delegated Operational works approvals
- Graph Showing Operational Works Lodgements & Approvals
- Graph showing Building Searches completed for 2009-2012
- Graph showing Rate Searches completed 2010/2011/2012
- Graph showing New Dwelling Approval Comparison for 2009-2012
- Graph showing New Dwelling Approvals broken down into LG area.
- Graph showing Pool Safety Certificates Issued
- Graph showing Building & Plumbing Inspections conducted

PLANNING - NEW APPLICATIONS LODGED – January 2013

Application No.	Development	Location	Date Lodged
DA/782/2012	Indoor Entertainment	65-69 Dawson Road, WEST GLADSTONE QLD 4680	4/1/2013
DA/783/2012	Display Home Sites (8 sites) and 1 temporary car park (17 spaces)	Lot 904 SP 246177, Dixon Drive, NEW AUCKLAND QLD 4680	7/1/2013
DA/784/2013	Major Industry - Residue Storage Facility & ERA	Lot 52 CTN 198, Unnamed Road, WEST STOWE QLD 4680	15/1/2013
DA/785/2013	Duplex Unit	5 Deveney Drive, KIRKWOOD QLD 4680	17/1/2013
DA/787/2013	Advertising Sign	231 Dawson Highway, CLINTON QLD 4680	24/1/2013
DA/788/2013	Caravan Park - 2 Stage Development	72 Old Bruce Highway, BURUA QLD 4680	25/1/2013
DA/789/2013	Estate Sales Office	1 Spence Court, KIRKWOOD QLD 4680	29/1/2013
DA/790/2013	Duplex Unit	Lot 92 CTN 1871, Dawson Highway, BYELLEE QLD 4680	30/1/2013
DA/791/2013	Relative's Apartment	121 Dalrymple Drive, TOOLOOA QLD 4680	30/1/2013

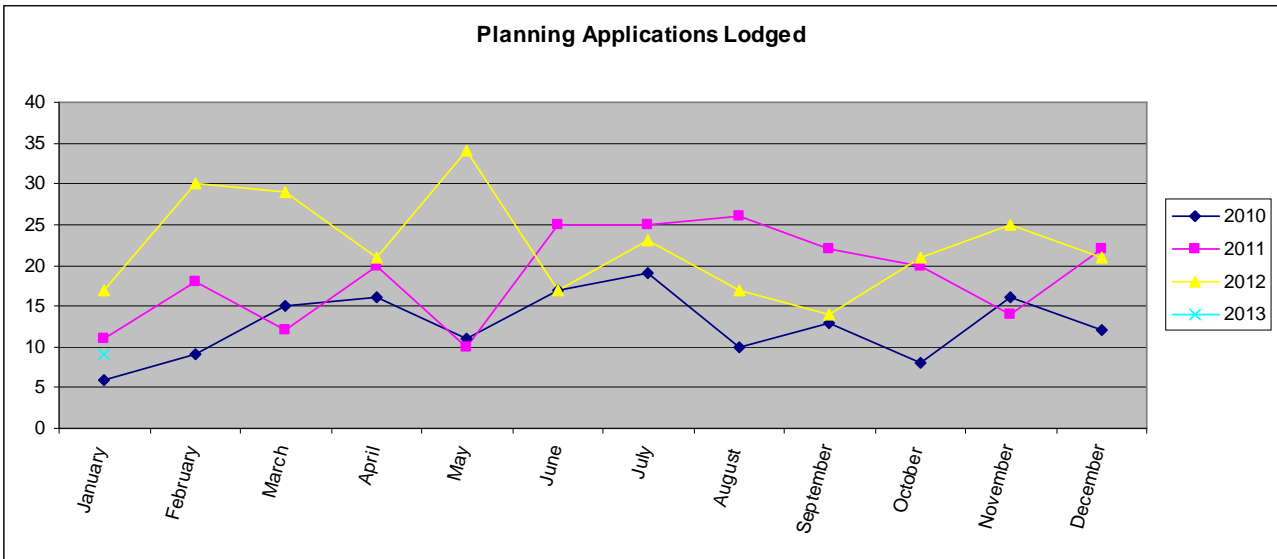
PLANNING - COUNCIL DECISIONS – January 2013

Application No.	Development	Location	Decision Date
DA/690/2012	Multiple Unit Residential (18 Units)	15 Kent Street, WEST GLADSTONE QLD 4680	15/1/2013
DA/568/2012	Multiple Unit Residential (12 Units)	4 Boles Street, WEST GLADSTONE QLD 4680	15/1/2013
DA/20629/2008	Change in Zone from Rural to Rural Residential & Reconfiguring a Lot - (1 into 83)	2402 Dawson Highway, CALLIOPE QLD 4680	15/1/2013
DA/701/2012	Duplex Unit	20 Boonderee Place, NEW AUCKLAND QLD 4680	15/1/2013
DA/711/2012	Multiple Units Residential (4 Units)	79 Off Lane, SOUTH GLADSTONE QLD 4680	15/1/2013
DA/692/2012	Child Care Centre	60 Findling Road, BOYNE ISLAND QLD 4680	15/1/2013

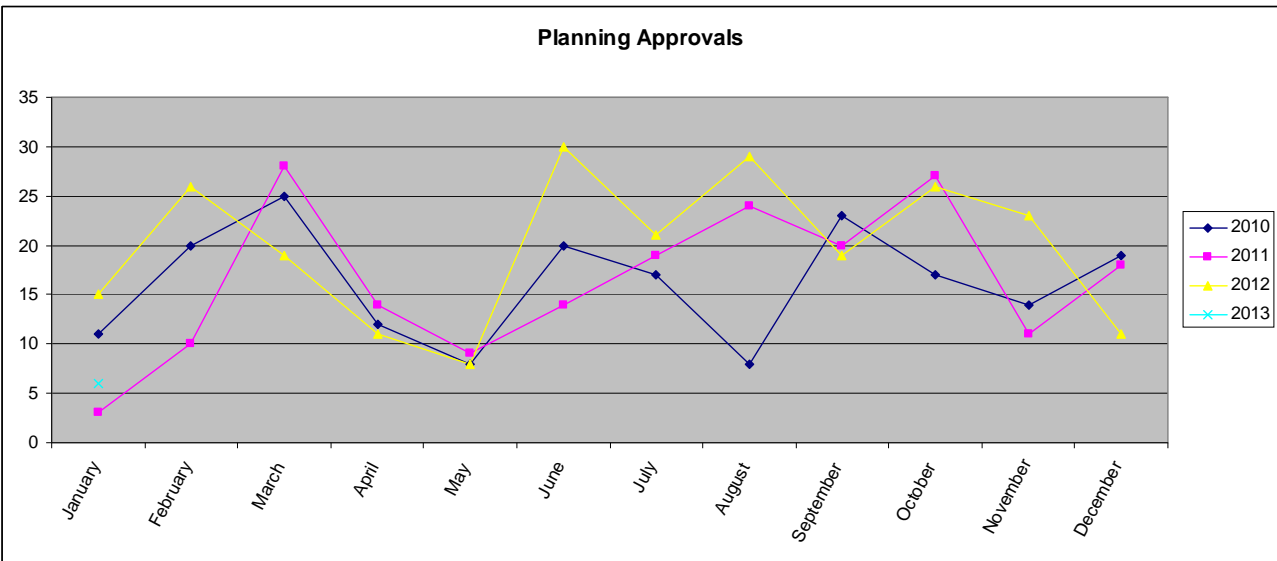
PLANNING – NEGOTIATED DECISIONS – January 2013

Application No.	Development	Location	Decision Date
DA/647/2012	Reconfiguring a lot (1 into 2)	7 Bursaria Court, KIN KORA QLD 4680	3/1/2012

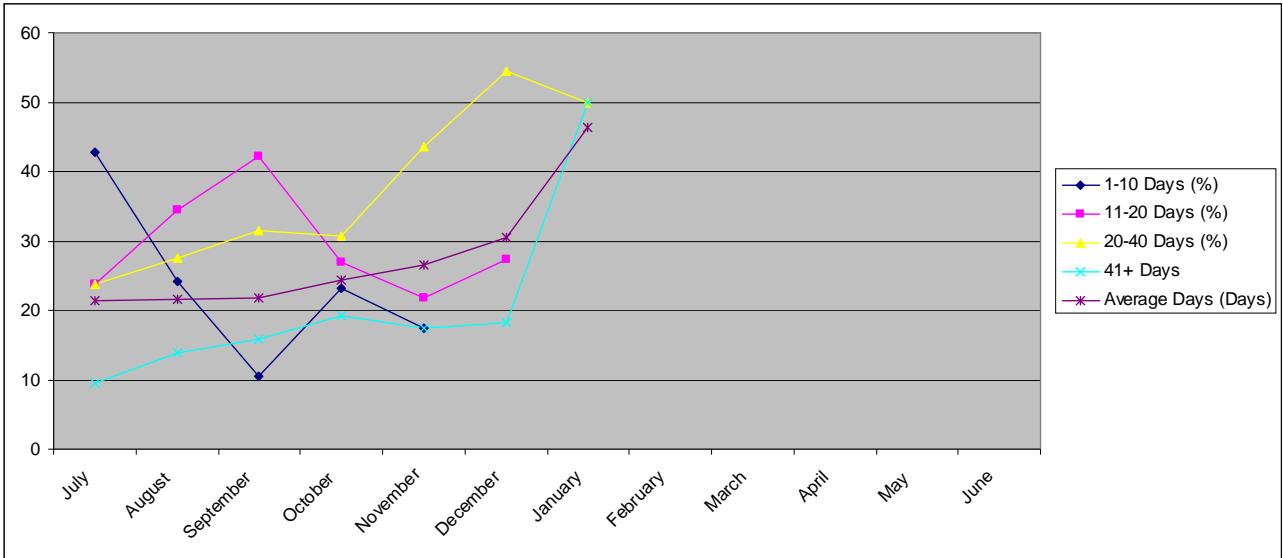
PLANNING APPLICATIONS LODGED 2010-2012



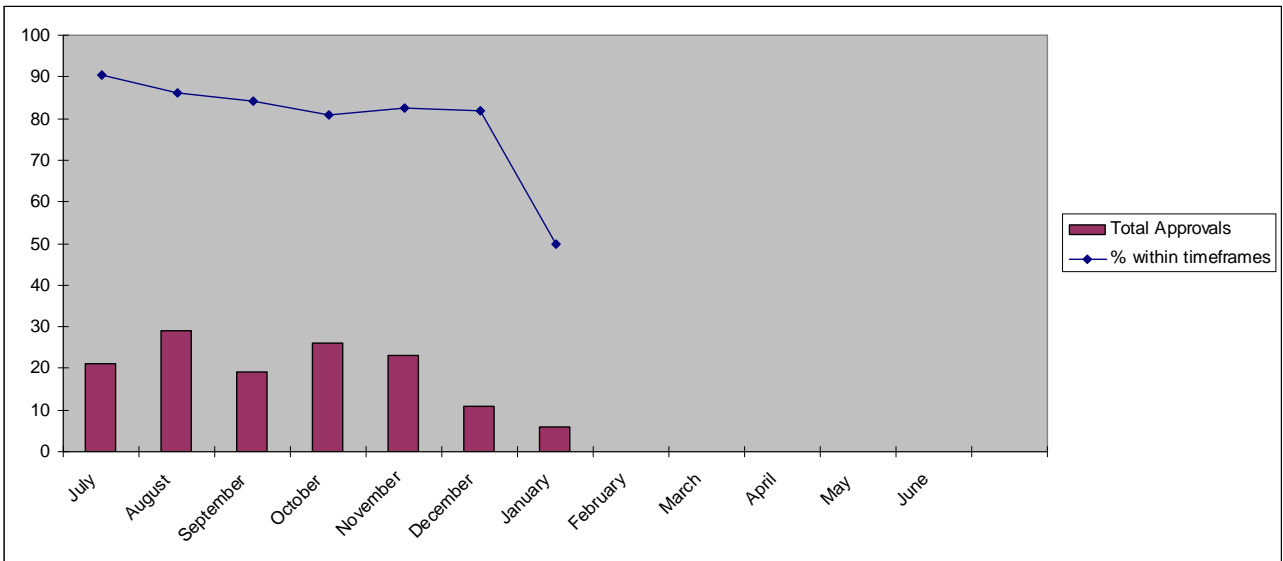
PLANNING APPLICATION APPROVALS 2010-2012



PLANNING APPROVAL TIMEFRAMES



TOTAL APPROVALS & TIMEFRAME %



OPERATIONAL WORKS - NEW APPLICATIONS LODGED - January 2013

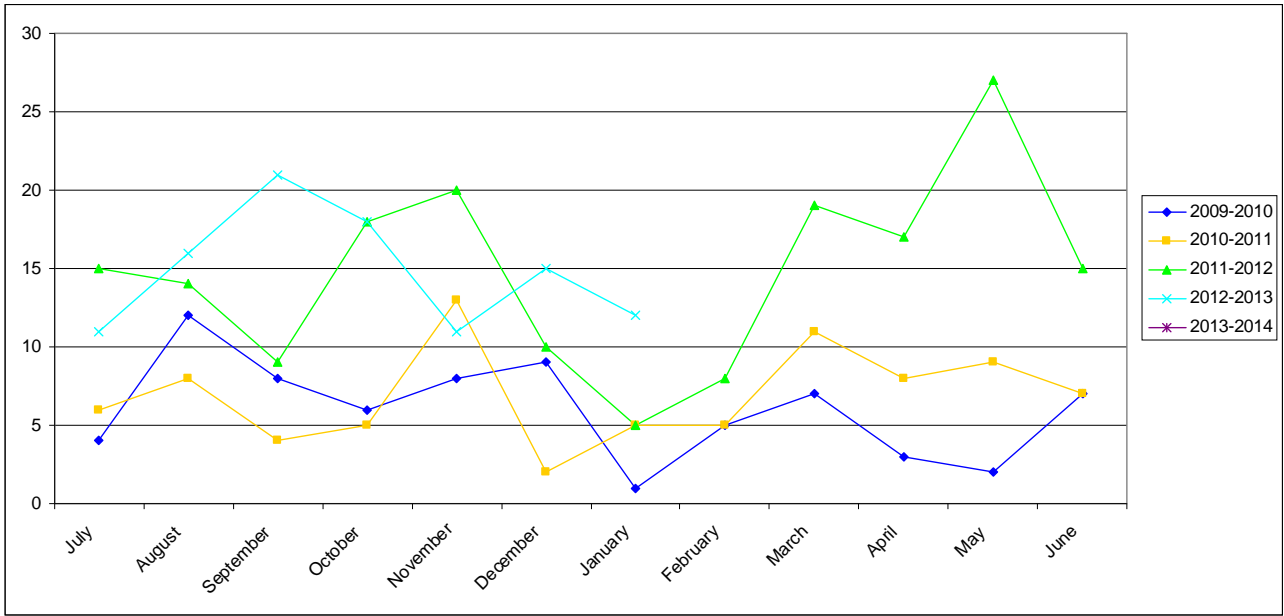
Application No.	Development	Location	Date Lodged
OPW/435/2012	Road Works, Stormwater, Water Infrastructure & Drainage Works	14 Ailsa Street, WEST GLADSTONE QLD 4680	3/1/2013
OPW/436/2012	Road Works, Stormwater, Water Infrastructure, Drainage Works, Earthworks, Sewerage Infrastructure & Landscaping	Lot 8 CP 860464, Unnamed Road, CURTIS ISLAND QLD 4680	7/1/2013
OPW/437/2013	Other - Driveway	1343 Tableland Road, MOUNT MARIA QLD 4674	7/1/2013
OPW/438/2013	Earthworks & Tidal Works (Concurrence Referral Agency)	Pt (b) Lot 192 SP 132778, Flinders Parade, GLADSTONE QLD 4680	9/1/2013
OPW/440/2013	Roadworks, Stormwater, Water Infrastructure, Drainage Works, Earthworks, Sewerage Infrastructure & Signage.	Lot 60 SP 165461, Broadacres Drive, TANNUM SANDS QLD 4680	10/1/2013
OPW/441/2013	Roadworks, Stormwater, Drainage Works, Earthworks & Signage.	7 Broadacres Drive, TANNUM SANDS QLD 4680	10/1/2013
OPW/443/2013	Roadworks, Stormwater, Water Infrastructure, Drainage Works, Earthworks, Sewerage Infrastructure, Landscaping & Signage.	4 Centenary Drive, BOYNE ISLAND QLD 4680	11/1/2013
OPW/444/2013	Stormwater & Earthworks	3 Crest Avenue, BOYNE ISLAND QLD 4680	11/1/2013
OPW/439/2013	Roadworks, Stormwater, Water Infrastructure, Drainage Works, Earthworks, Sewerage Infrastructure & Signage.	33 Bradford Road, TELINA QLD 4680	15/1/2013
OPW/442/2013	Stormwater, Drainage Works & Sewerage Infrastructure.	47 Harbour Terrace, GLADSTONE QLD 4680	16/1/2013
OPW/446/2013	Stormwater, Water Infrastructure & Sewerage Infrastructure	50 Trudy Avenue, CALLIOPE QLD 4680	22/1/2013
OPW/447/2013	Sewerage Repeater Station (Civil Works Only)	60 Findling Road, BOYNE ISLAND QLD 4680	31/1/2013

OPERATIONAL WORKS - DELEGATED DECISIONS - January 2013

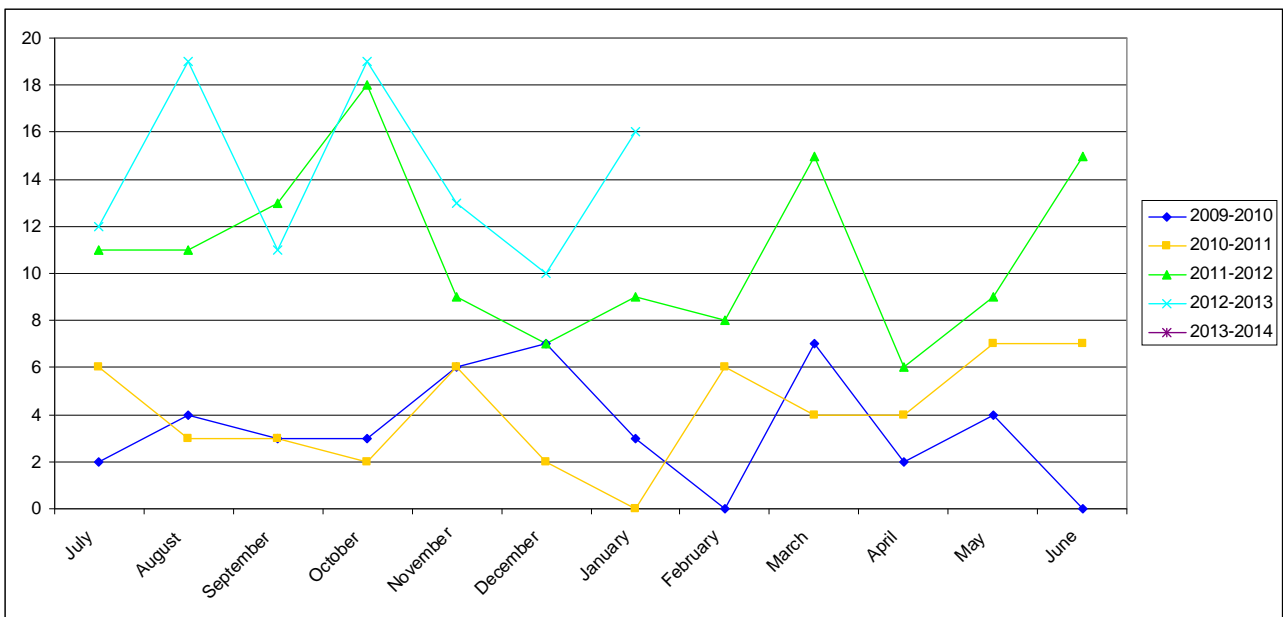
Application No.	Development	Location	Decision Date
OPW/350/2012	Roadworks, stormwater, water infrastructure & earthworks.	19 Yarroon Street & 58 Goondoon Street GLADSTONE QLD 4680	9/1/2013

OPW/438/2013	Earthworks & Tidal Works (Concurrence Referral Agency)	Lot 2 RP 610849, MacFarlan Drive, 25 – 31 Flinders Parade GLADSTONE QLD 4680	22/1/2013
OPW/380/2012	Earthworks	1906 Dawson Highway CALLIOPE QLD 4680	15/1/2013
OPW/377/2012	Landscaping	Lot 950 SP 246173, Kirkwood Road KIRKWOOD QLD 4680	7/1/2013
OPW/409/2012	Landscaping	Lot 951 SP 246155, Briffney Street KIRKWOOD QLD 4680	7/1/2013
OPW/391/2012	Road Works, Stormwater and Earthworks	6 Boowan Court CALLEMONDAH QLD 4680	21/1/2013
OPW/421/2012	Sewerage Infrastructure	Lot 908 SP 246178, Dixon Drive NEW AUCKLAND QLD 4680	24/1/2013
OPW/426/2012	Landscaping	Lot 907 SP 246178, Dixon Drive NEW AUCKLAND QLD 4680	10/1/2013
OPW/386/2012	Landscaping	Lot 500 SP 242954, Capricornia Drive CALLIOPE QLD 4680	7/1/2013
OPW/336/2012	Roadworks, stormwater, water infrastructure, drainage works, earthworks, sewerage infrastructure & signage.	Lot 500 SP 242954, Capricornia Drive CALLIOPE QLD 4680	7/1/2013
OPW/381/2012	Roadworks, stormwater, water infrastructure, drainage works, earthworks, sewerage infrastructure, signage & clearing vegetation under planning scheme.	Lot 201 SP 242764, Kirkwood Road O'CONNELL QLD 4680	22/1/2013
OPW/362/2012	Road Works, Stormwater and Earthworks	20-22 Herbert Street GLADSTONE QLD 4680	10/1/2013
OPW/329/2012	Roadworks, drainage works, earthworks & sewerage infrastructure.	39 Guerassimoff Road YARWUN QLD 4694	21/1/2013
OPW/356/2012	Stormwater, water infrastructure, earthworks, sewerage infrastructure & landscaping.	261 Auckland Street SOUTH GLADSTONE QLD 4680	23/1/2013
OPW/375/2012	Retaining Wall - Other	27 Telopea Place KIRKWOOD QLD 4680	2/1/2013
OPW/418/2012	Landscaping	Lot 508 SP 247064, Kirkwood Road NEW AUCKLAND QLD 4680	21/1/2013

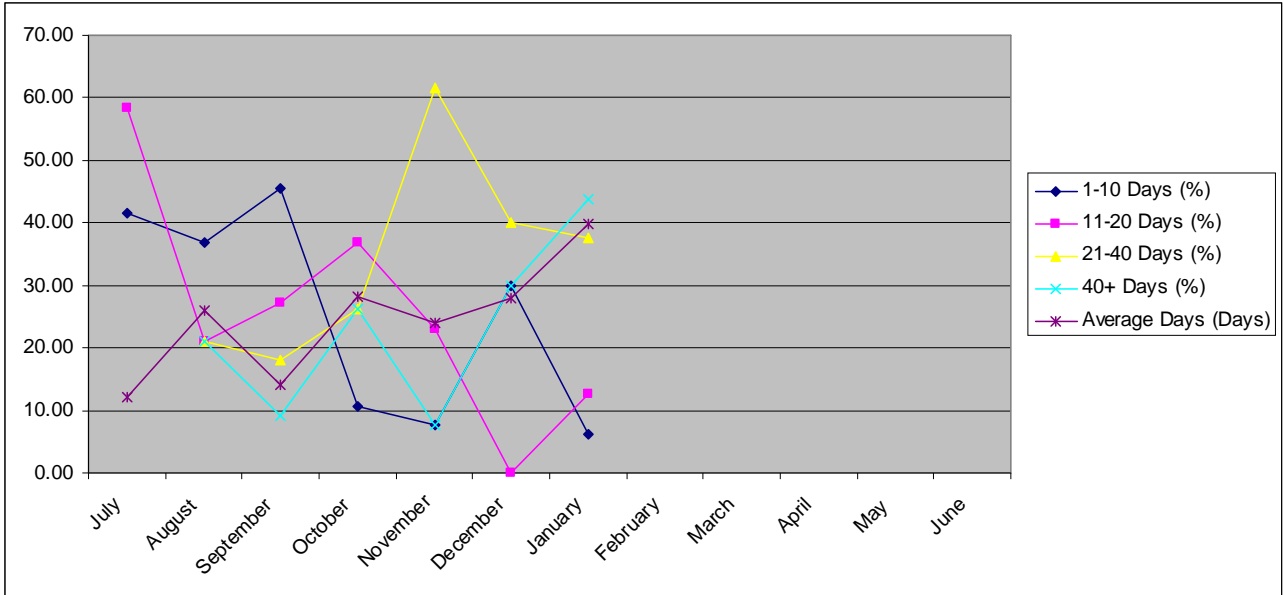
OPERATIONAL WORKS LODGEMENT 2009-2012



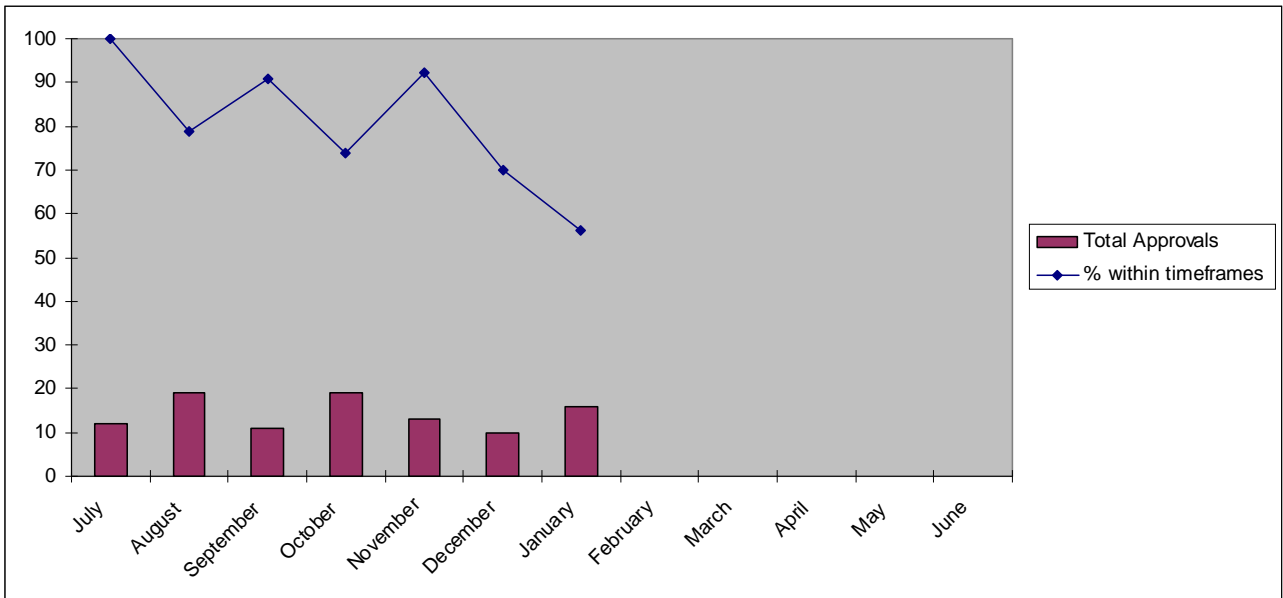
OPERATIONAL WORKS DECISIONS 2009-2012



OPERATIONAL WORKS APPROVAL TIMEFRAMES



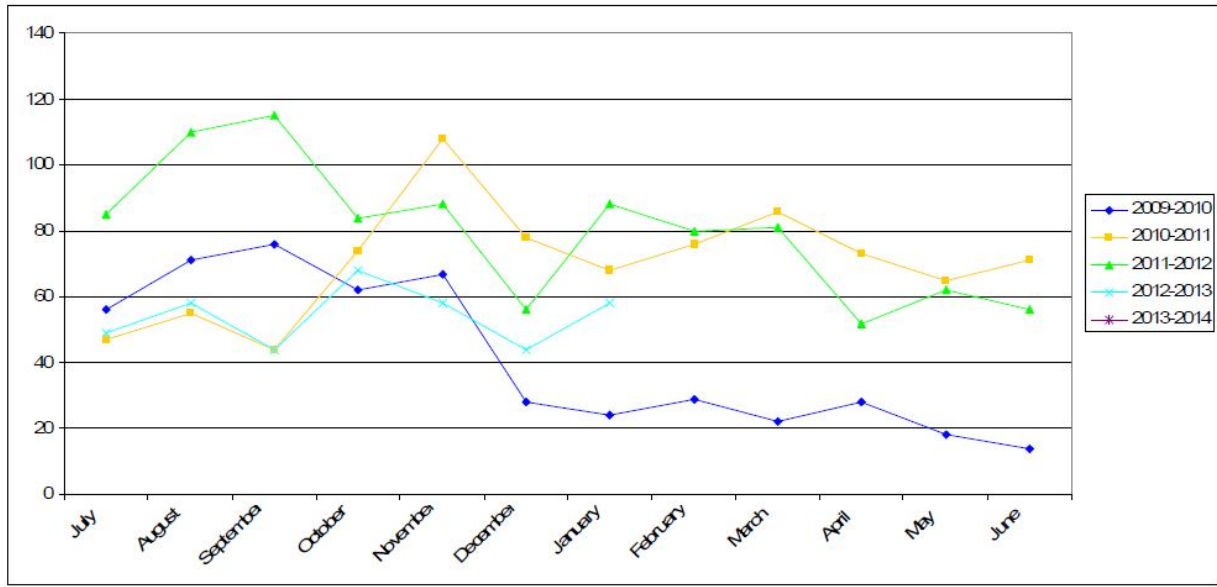
TOTAL APPROVALS & TIMEFRAME %



BUILDING SECTION STATISTICS

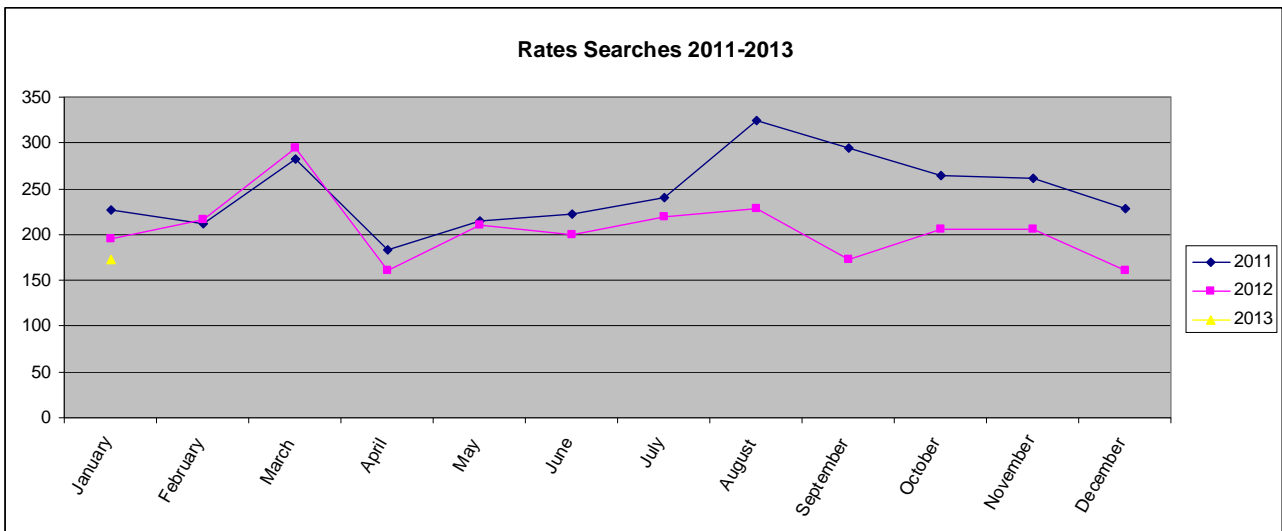
BUILDING SEARCHES CONDUCTED 2009-2013

TOTAL BUILDING SEARCHES

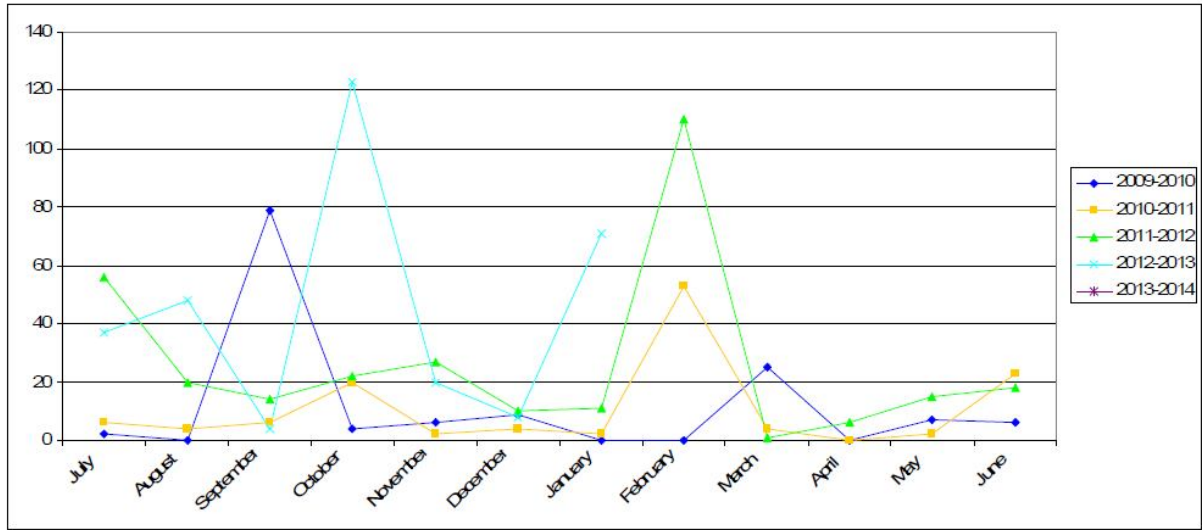


RATES SEARCHES 2011-2013

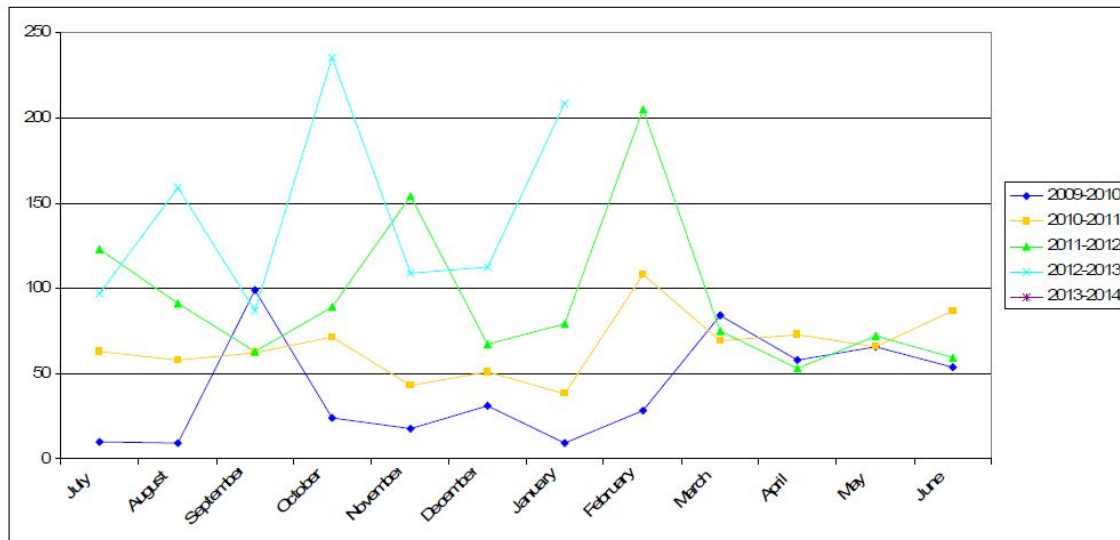
Rates Searches 2011-2013



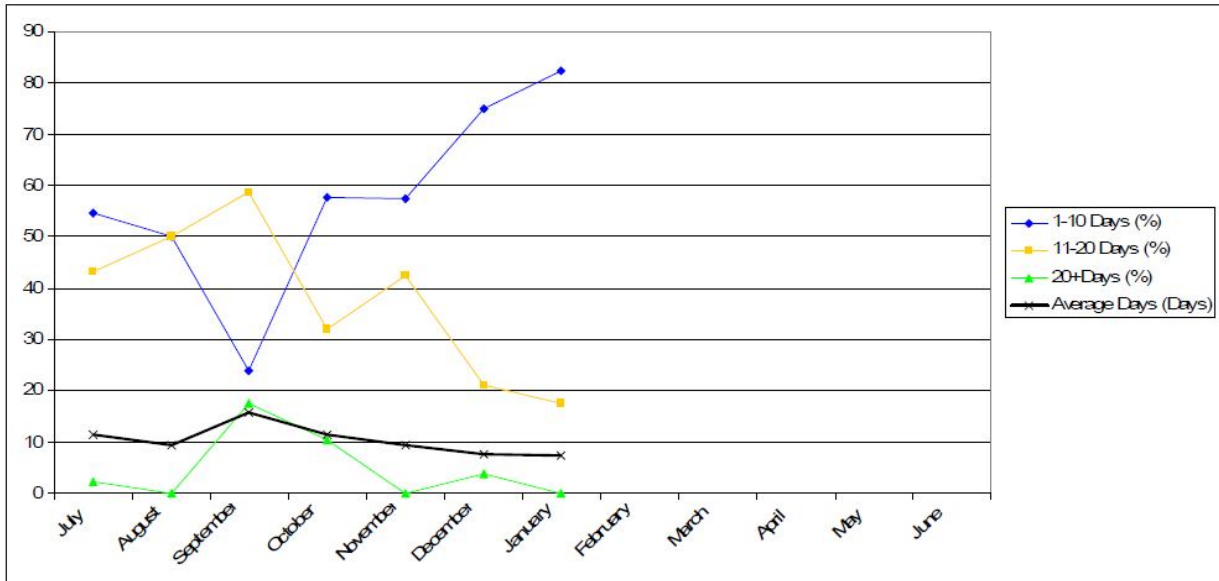
TOTAL UNIT/DUPLEX APPROVALS (NO. OF UNITS)



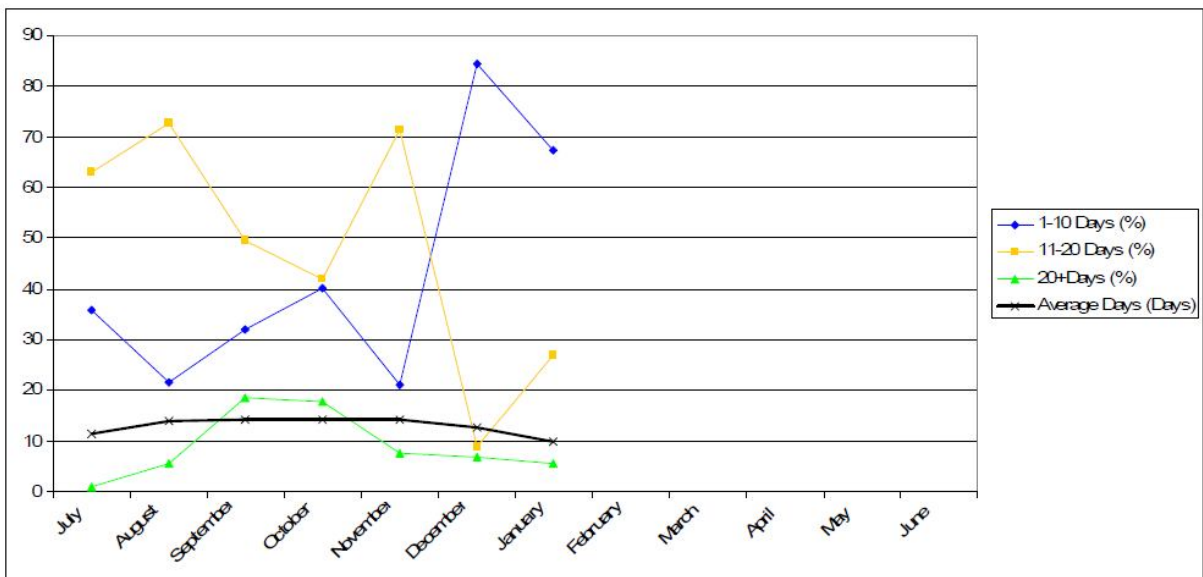
TOTAL HOUSING UNIT APPROVALS (DWELLING, DUPLEX, UNITS)



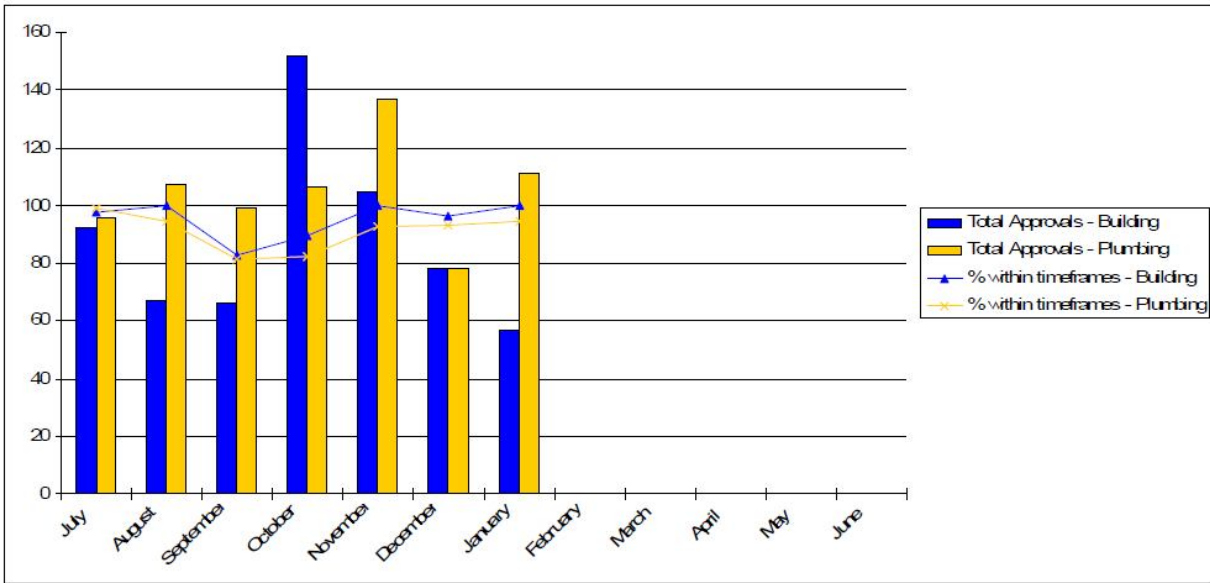
BUILDING APPROVAL TIMES – FROM 1 JULY 2012



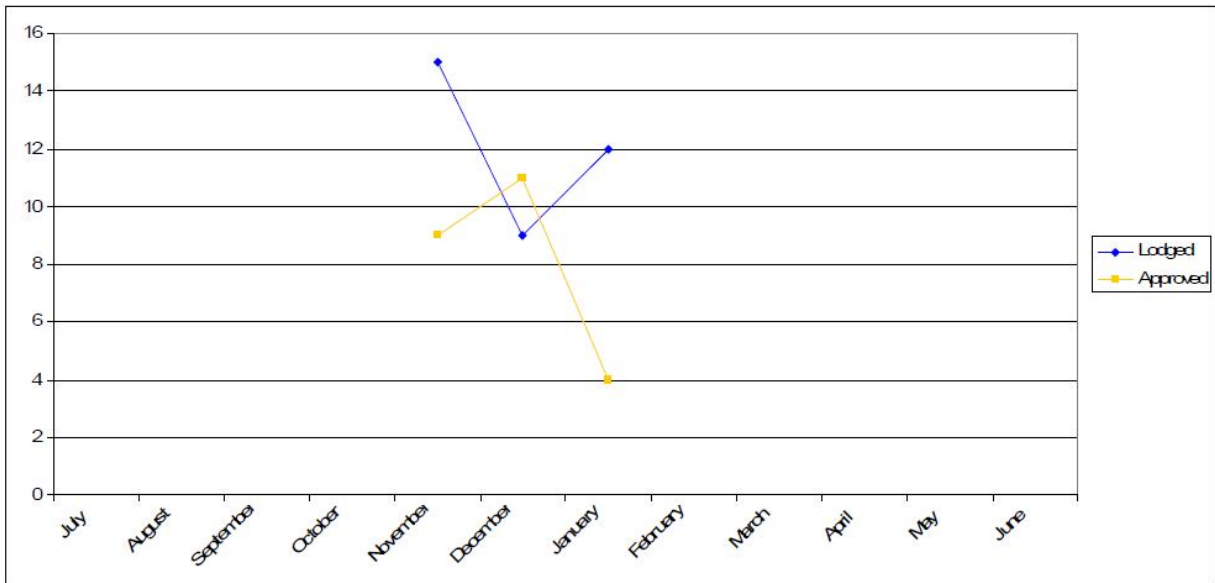
PLUMBING APPROVAL TIMES – FROM 1 JULY 2012



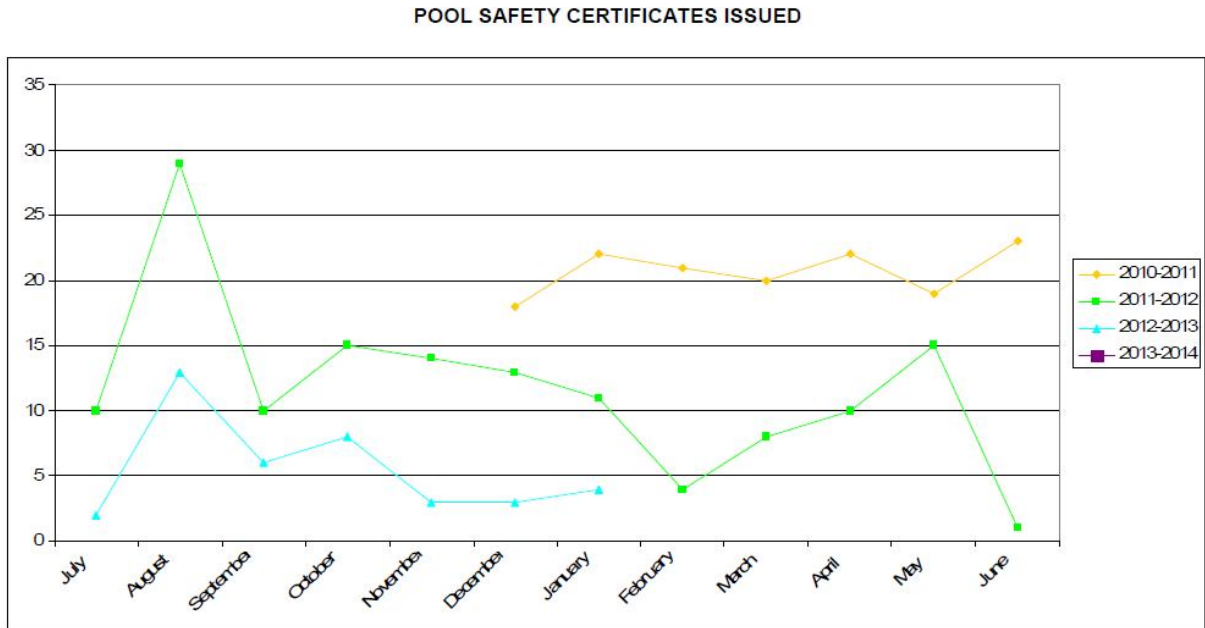
BUILDING & PLUMBING APPROVALS – WITHIN REGULATORY TIMEFRAMES – FROM 1 JULY 2012



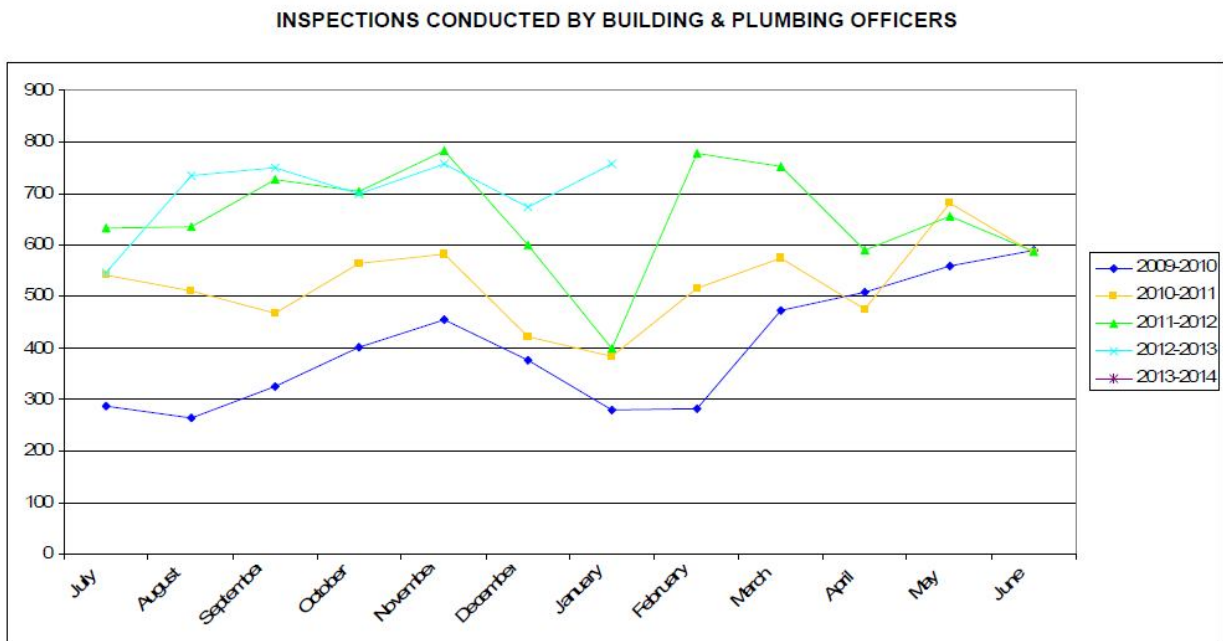
BOUNDARY RELAXATION APPLICATIONS – FROM 1 NOVEMBER 2012



BUILDING & PLUMBING – POOL SAFETY CERTIFICATES ISSUED



BUILDING & PLUMBING – BUILDING & PLUMBING INSPECTIONS



Jodie Clow
 Technical Officer – Planning
 7 February 2012