



Development Services

Development Statistics - August 2011

The information below is provided to Councillors for the month of August 2011 in the following areas:-

- New planning applications lodged
- Delegated planning approvals
- Council planning approvals
- Delegated operational works approvals
- Graph showing Building Searches completed for 2011
- Graph showing Rate Searches completed 2010/2011
- Graph showing New Dwelling Approval Comparison for 2010/2011
- Graph showing New Dwelling Approvals 2002-2011
- Graph showing New Dwelling Approvals 2011 broken down into LG area.

PLANNING - NEW APPLICATIONS LODGED - AUGUST 2011

Application No.	Development	Location	Date Lodged
DA/416/2011	Caravan Park Extension (27 cabins)	Awoonga Dam Road, Benaraby	31/08/2011
DA/415/2011	Local Industry (2 Tenancies)	1 Boowan Court, Callemondah	31/08/2011
DA/414/2011	RaL - 1 lot into 2	24 Orana Avenue, Boyne Island	31/08/2011
DA/413/2011	RaL - 1 lot into 2 (GPC)	Curtis Island	31/08/2011
DA/411/2011	RaL - 1 lot into 14 Stage 1 (7 lots), Stage 2 (7 lots)	11 John Dory Drive, Toolooa	26/08/2011
DA/410/2011	Duplex	3 Brando Lane, West Gladstone	26/08/2011
DA/409/2011	RaL - 5 lots into 6	57, 59, 63, 65, 67 Goondoon Street, Gladstone	24/08/2011
DA/408/2011	Temporary Use - Food Premises	149 Stowe Road, Calliope	24/08/2011

Application No.	Development	Location	Date Lodged
DA/407/2011	Boundary Realignment	Lot 251 Innamincka Way, Agnes Water	24/08/2011
DA/406/2011	RaL - 1 into 2 & small lot housing	11 Dartmouth Close, Clinton	23/08/2011
DA/405/2011	RaL - 1 into 28 lots - Stages 12 & 13A Calliope Chase Estate	Lot 800 Central Avenue, Calliope	19/08/2011
DA/404/2011	Local Industry (5 Industrial Tenancies)	15 Roseanna Street, Clinton	18/08/2011
DA/403/2011	Multiple Unit Residential (9 units)	23 Roberts Street, South Gladstone	15/08/2011
DA/402/2011	RaL - 1 lot into 46 lots (Stage 7 Vantage Estate)	Lot 504 Kirkwood Road, New Auckland	12/08/2011
DA/401/2011	Workers Accommodation (166 units - 498 persons - 2 Stages)	Lot 102 Hooke Road, Calliope	12/08/2011
DA/400/2011	Multiple Unit Residential (3 units)	97 Toolooa Street, South Gladstone	12/08/2011
DA/399/2011	Major Infrastructure (Powder Activated Carbon Plant - GAWB)	Lot 1 Fitzsimmons Street, South Gladstone	12/08/2011
DA/398/2011	Workers Accommodation (1017 Units) & ERA	Lot 45 Forest Road, Targinie	11/08/2011
DA/397/2011	Extractive Industry & ERA	Lot 6 Taunton Road, Taunton	11/08/2011
DA/396/2011	RaL - 1 lot into 3	Lot 1 Jacaranda Drive Boyne Island	11/08/2011
DA/395/2011	RaL - 1 lot into 2	2 Beezley Street, Glen Eden	11/08/2011
DA/394/2011	Boundary Realignment (2 into 2) - Stage 9A Beecher Heights	282 & 230 Jim Whyte Way, Beecher	08/08/2011
DA/393/2011	Vehicle Machinery Sales & Hire	18 Neil Street, Clinton	05/08/2011
DA/392/2011	Vehicle Repair Station	30-32 Callemondah Drive, Clinton	04/08/2011
DA/391/2011	RaL - 1 lot into 2	117 Randles Road, Bororen	04/08/2011
DA/390/2011	Storage Depot	17 Dalrymple Drive, Toolooa	01/08/2011

PLANNING - DELEGATED DECISIONS - AUGUST 2011

Application No.	Development	Location	Decision Date
DA/44596/2008	RaL - 1 lot into 69 lots (Hillside at 1770 Stages 12,13 & 14)	Lot 102 Round Hill Road, Agnes Water	17/08/2011
DA/44882/2009	RaL - 1 lot into 18 lots	Lot 2 Captain Cook Drive, Agnes Water	09/08/2011
DA/44883/2009	RaL - 1 lot into 20 lots	Lot 2 Captain Cook Drive, Agnes Water	08/08/2011
DA/44884/2009	RaL - 1 lot into 21 lots	Lot 2 Captain Cook Drive, Agnes Water	09/08/2011
DA/231/2010	RaL - 2 lots into 4	69 & 75 Stewart Road, Beecher	02/08/2011

Application No.	Development	Location	Decision Date
DA/263/2011	Parking & Access Easement	31-39 Glenlyon Street, Gladstone	09/08/2011 - Modified
DA/295/2011	RaL - 1 lot into 2	13 Mary Street, Calliope	03/08/2011
DA/309/2011	Multiple Unit Residential - 7 units	12 Leonard Street, South Gladstone	17/08/2011
DA/340/2011	PTW - Pipeline and associated temporary infrastructure - The Narrows Bundled Crossing - QCLNG	West Stowe	03/08/2011
DA/346/2011	Multiple Unit Residential - 4 Units	43 Butler Street, New Auckland	25/08/2011
DA/358/2011	Dwelling House	21 Jeffery Court, Agnes Water	15/08/2011
DA/177/2010	Warehouse & Shop	42 Bensted Road, Callemondah	16/08/2011
DA/335/2011	PTW - Saltwater Supply & Return Pipeline - RTA Yarwun	804 Hanson Road, Yarwun	17/08/2011
DA/357/2011	Extension to Vehicle Machinery Sales & Hire	56 Callemondah Drive, Clinton	18/08/2011
DA/362/2011	Commercial Premises, Vehicle & Machinery Sales	11 Drewe Street, Gladstone	22/08/2011
DA/366/2011	Boundary Realignment (3 into 3)	Leferink Road, Benaraby	17/08/2011
DA/373/2011	Boundary Realignment (2 into 2)	Agnes/Elizabeth Street, South Gladstone	19/08/2011
DA/375/2011	Boundary Realignment (2 into 2)	Bell/O'Connell Street, Barney Point	19/08/2011

PLANNING - COUNCIL DECISION - AUGUST 2011

Application No.	Development	Location	Decision Date
DA/245/2010	RaL/MCU - 2 lots into 87 residential lots (Gecko Valley Estate Stage 4)	16 Johnson Street, Glen Eden	03/08/2011
DA/298/2011	Office	15 Lord Street, Gladstone	03/08/2011
DA/304/2011	Stage 1 - Commercial Premises, Catering Premises & Shop	8 Agnes Street, Agnes Water	03/08/2011 (Stage 2 - Refused)
DA/344/2011	RaL/MCU - 1 lot into 2 lots & Small Lot Housing	1 Sarah Court, New Auckland	03/08/2011
DA/345/2011	RaL/MCU - 1 lot into 2 lots & Small Lot Housing	46 Scenery Street, West Gladstone	03/08/2011
DA/20621/2008	Preliminary Approval Overriding the Planning Scheme - Master Planned Urban Community - Heidelberg	Gladstone-Benaraby Road, Wurdong Heights	17/08/2011

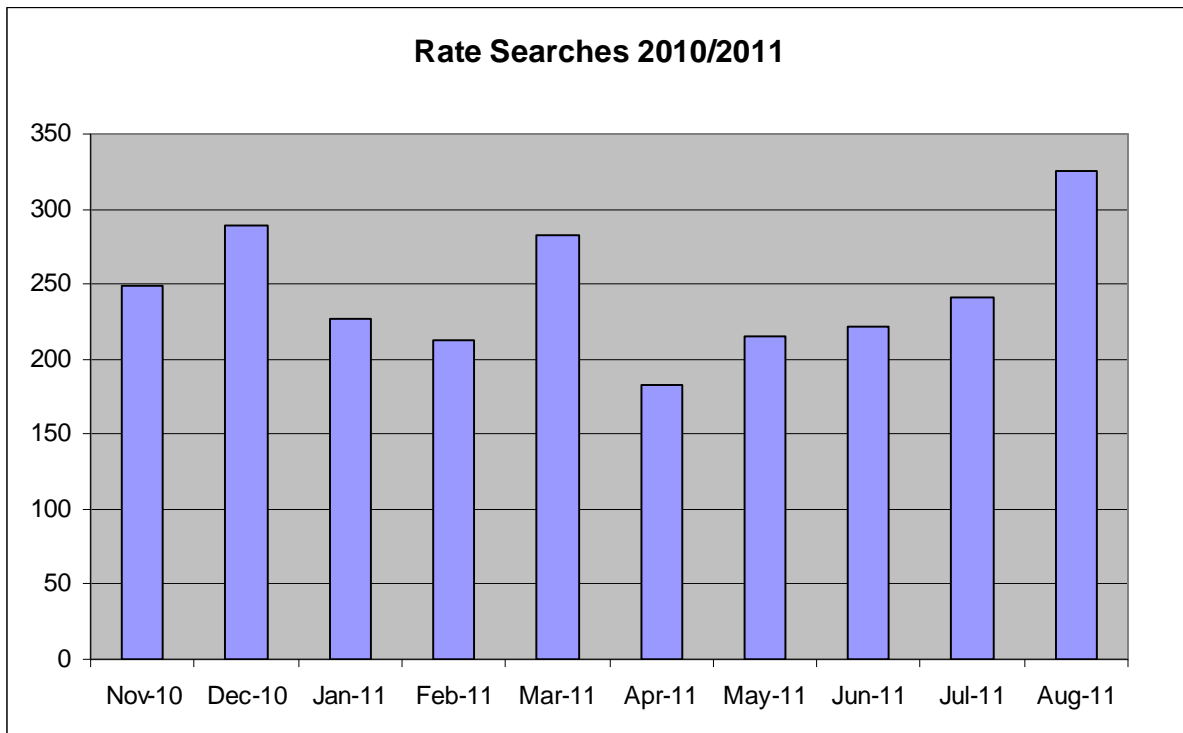
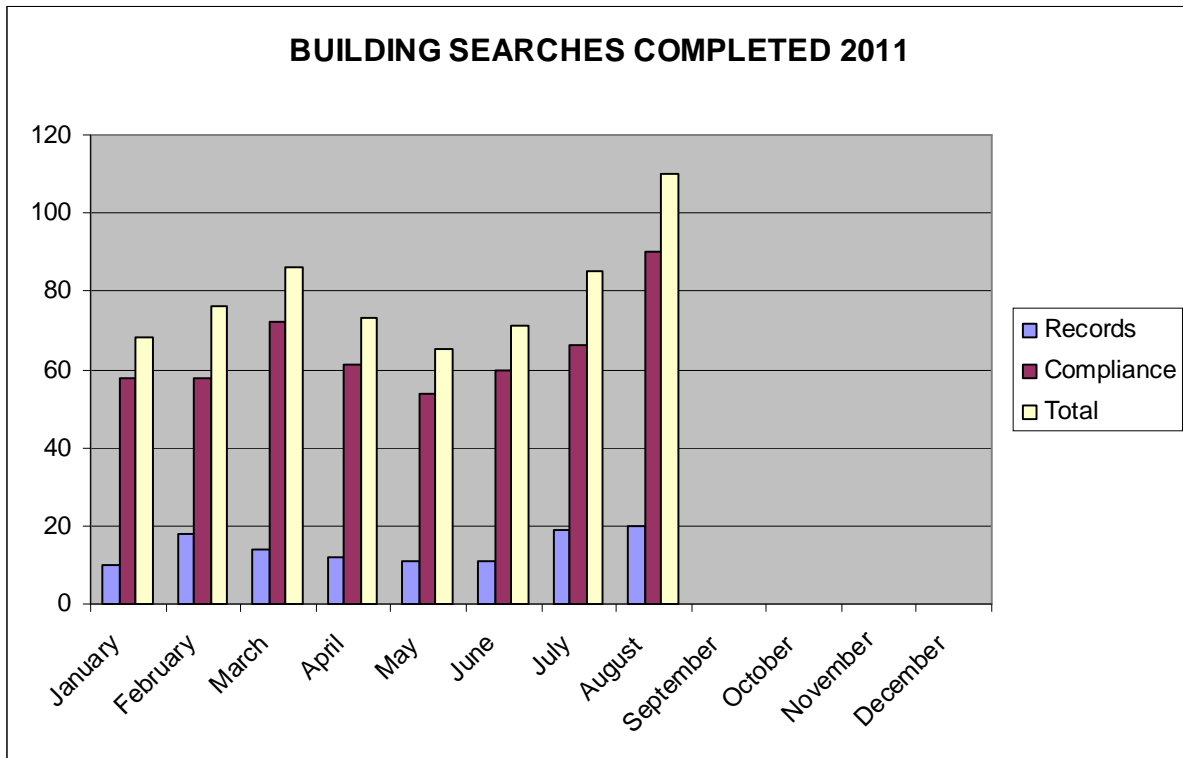
OPERATIONAL WORKS - NEW APPLICATIONS LODGED - AUGUST 2011

Application No.	Development	Location	Date Lodged
OPW/184/2011	Stormwater & Earthworks (3 units)	72 Ann Street, South Gladstone	30/08/2011
OPW/183/2011	Landscaping (Little Creek Estate - Park)	Lot 902 Kirkwood Road, Kirkwood	26/08/2011
OPW/182/2011	Landscaping (Little Creek Estate - External Works)	Lot 902 Kirkwood Road, Kirkwood	26/08/2011
OPW/181/2011	Landscaping (Little Creek Estate Stage 14)	Lot 902 Kirkwood Road, Kirkwood	26/08/2011
OPW/180/2011	Roadworks, Stormwater, Drainage Works, Earthworks & Sewerage Infrastructure (63 units)	64 Glenlyon Street, Gladstone	23/08/2011
OPW/179/2011	Stormwater, Drainage Works, Earthworks, Sewerage Infrastructure (1 into 2)	12 Lauren Court, South Gladstone	22/08/2011
OPW/178/2011	Roadworks, Stormwater, Drainage Works, Earthworks, Signage, Water & Sewerage Infrastructure (Elliot's Run Estate Stage 1)	Lot 101 Arthur Hulme Way, Calliope	16/08/2011
OPW/177/2011	Bulk Earthworks	23 South Trees Drive, South Trees	15/08/2011
OPW/176/2011	Roadworks, Stormwater, Drainage Works, Earthworks, Landscaping, Signage, Clearing Vegetation, Water & Sewerage Infrastructure (Little Creek Estate Stage 14)	Lot 902 Kirkwood Road, Kirkwood	13/08/2011
OPW/175/2011	Landscaping (Little Creek Estate Stage 12)	Lot 902 Kirkwood Road, Kirkwood	12/08/2011
OPW/173/2011	Landscaping (Little Creek Estate Stage 13)	Lot 902 Kirkwood Road, Kirkwood	03/08/2011
OPW/172/2011	Earthworks & Clearing Vegetation (Vantage Estate Stages 6 & 7)	Lot 504 Kirkwood Road, Kirkwood	02/08/2011
OPW/171/2011	Roadworks, Stormwater, Drainage Works, Earthworks, Landscaping & Signage (WICET)	Lot 106 Gladstone-Mount Larcom Road, Callemondah	02/08/2011
OPW/170/2011	Roadworks, Stormwater, Earthworks	51436 Bruce Highway, West Stowe	02/08/2011

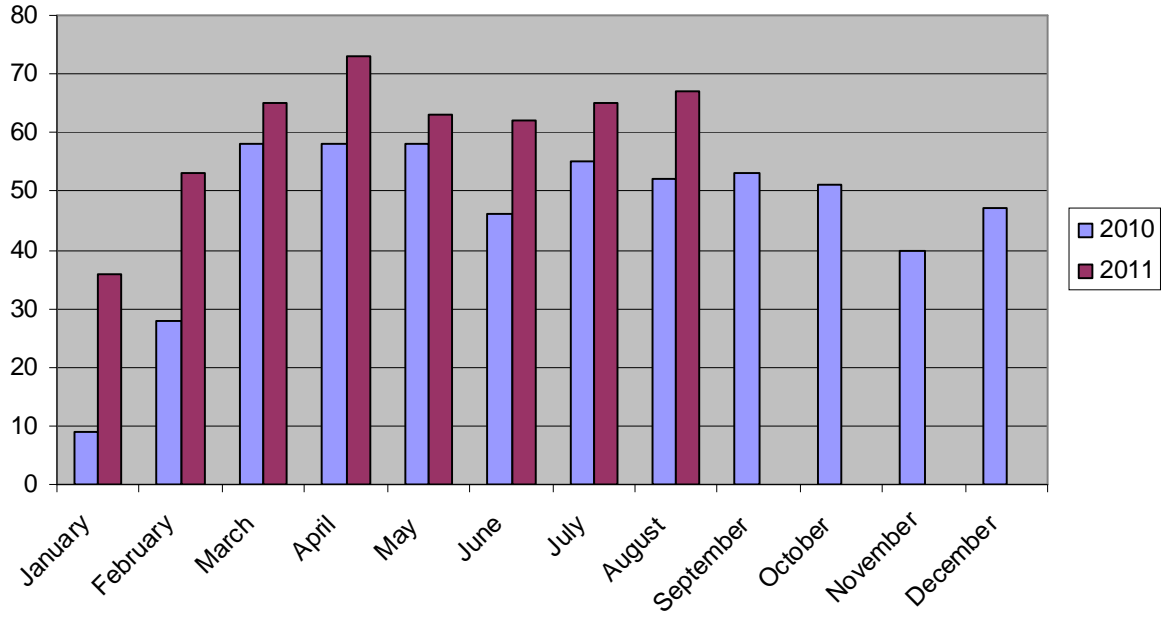
OPERATIONAL WORKS - DELEGATED DECISIONS - AUGUST 2011

Application No.	Development	Location	Decision Date
OPW/52/2010 25 lots	Roadworks, Stormwater, Earthworks, Water & Sewerage Infrastructure (Elliot's Run Estate Stage 1 - 40 lots)	15 Mingara Crescent, Calliope	17/08/2011
OPW/53/2010 15 lots	Roadworks, Stormwater, Earthworks, Water & Sewerage Infrastructure (Elliot's Run Estate Stage 1 - 40 lots)	15 Mingara Crescent, Calliope	17/08/2011
OPW/86/2010	Stormwater & Sewerage Infrastructure (7 units)	214 Oaka Street, South Gladstone	11/08/2011
OPW/128/2011	Landscaping (Little Creek Estate Stage 5)	Lot 901 Kirkwood Road, Kirkwood	22/08/2011
OPW/131/2011	Stormwater, Earthworks, Water & Sewerage Infrastructure (8 units)	5 Glenlyon Street, Gladstone	12/08/2011
OPW/135/2011	Landscaping (Little Creek Estate Stage 4A)	Lot 902 Kirkwood Road, Kirkwood	11/08/2011
OPW/141/2011	Landscaping (Oasis on Kirkwood Stage 1)	Lot 92 Dawson Highway, Byellee	26/08/2011
OPW/149/2011	Earthworks, Roadworks, Stormwater, Landscaping & Water Infrastructure (12 units)	5 Valley Vista Court, West Gladstone	23/08/2011
OPW/150/2011	Roadworks, Stormwater, Drainage Works, Earthworks, Landscaping, Signage, Clearing Vegetation, Water & Sewerage Infrastructure (Glen Eden Estate Stages 7 & 8 - 52 lots)	Glen Eden Drive, Glen Eden	12/08/2011
OPW/152/2011	Stormwater & Water Infrastructure (1 into 2)	29 Agnes Street, South Gladstone	05/08/2011
OPW/155/2011	Landscaping (Little Creek Estate Stage 8)	Lot 902 Kirkwood Road, Kirkwood	11/08/2011
OPW/162/2011	Roadworks, Drainage Works, Earthworks, Sewerage Infrastructure & Carpark (Yaralla Sports Club Extension)	26 Bell Street, Barney Point	25/08/2011

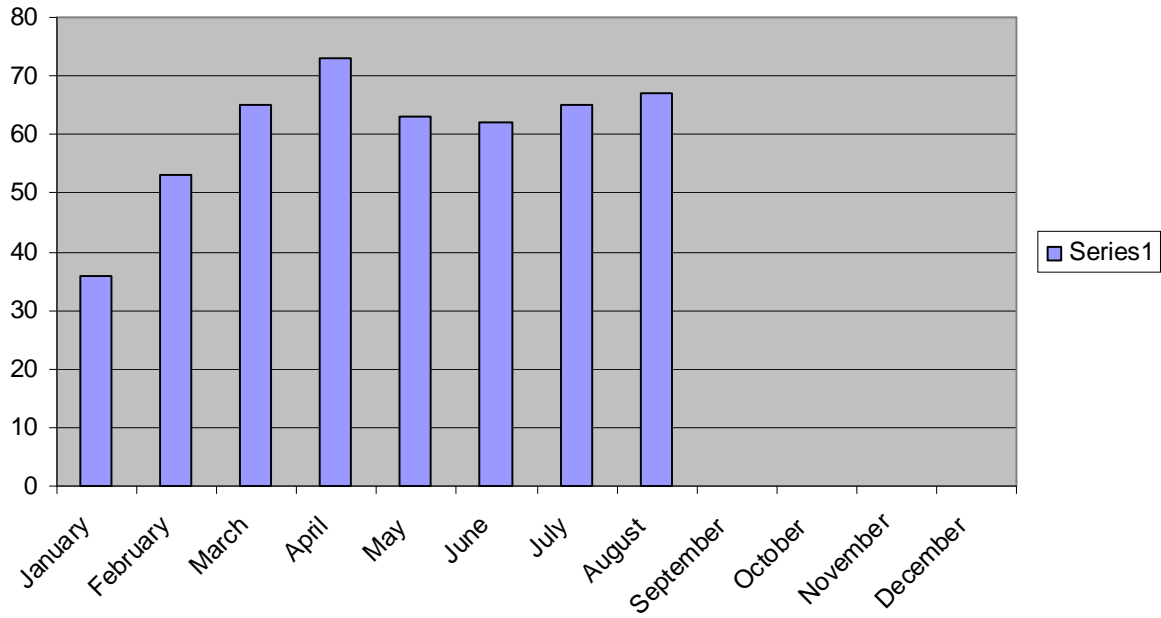
BUILDING SECTION STATISTICS

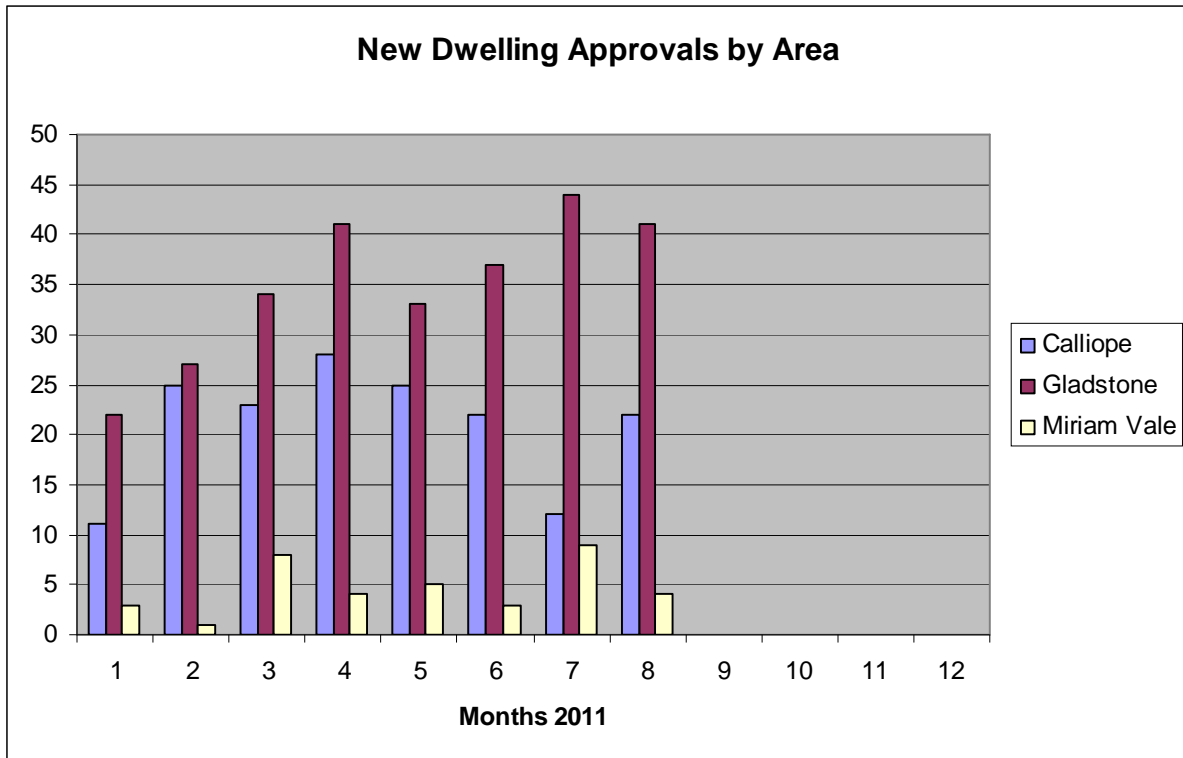


NEW DWELLING COMPARISON 2010/2011



NEW DWELLINGS 2011





5 September 2011