



Development Services

Development Statistics - October 2011

The information below is provided to Councillors for the month of October 2011 in the following areas:-

- New planning applications lodged
- Delegated planning approvals
- Council planning approvals
- Delegated operational works approvals
- Graph showing Building Searches completed for 2011
- Graph showing Rate Searches completed 2010/2011
- Graph showing New Dwelling Approval Comparison for 2010/2011
- Graph showing New Dwelling Approvals 2002-2011
- Graph showing New Dwelling Approvals 2011 broken down into LG area.

PLANNING - NEW APPLICATIONS LODGED - OCTOBER 2011

Application No.	Development	Location	Date Lodged
DA/459/2011	Multiple Unit Residential (4 units)	55 Toolooa Street, South Gladstone	31/10/2011
DA/455/2011	Medical Centre & Indoor Entertainment (Physio & Gym)	2041 Dawson Highway, Calliope	31/10/2011
DA/458/2011	Relatives Apartment	4 Mountain View Court, Calliope	27/10/2011
DA/457/2011	Duplex	6 Walnut Street, New Auckland	27/10/2011
DA/456/2011	Multiple Unit Residential (11 units)	1 Bayne Street, West Gladstone	27/10/2011
DA/454/2011	Bulk Store	8 Roy Swenson Close, Callemondah	26/10/2011
DA/453/2011	Shop & Offices	20 Herbert street, Gladstone	26/10/2011
DA/452/2011	Home Business	15 Selma Court, Tannum Sands	20/10/2011

Application No.	Development	Location	Date Lodged
DA/451/2011	Multiple Unit Residential (3 units)	58 Off Lane, South Gladstone	19/10/2011
DA/450/2011	Multiple Unit Residential (30 units)	6 Harvey Road, Clinton	18/10/2011
DA/449/2011	Shed on Vacant Land	7 Solander Close, Agnes Water	18/10/2011
DA/448/2011	Multiple Dwelling (3 units)	1 The Promenade, Agnes Water	18/10/2011
DA/447/2011	RaL - 1 lot into 6 lots in 2 stages	22 Joseph Banks Boulevard, Agnes Water	18/10/2011
DA/446/2011	Additional Tourist Cabins (4) & Caretakers Residence	754 Fingerfield Road, Deepwater	18/10/2011
DA/445/2011	Multiple Unit Residential (6 units)	27 Roberts Street, South Gladstone	14/10/2011
DA/444/2011	Small Lot Housing & RaL (1 into 2)	11 Cressbrook Street, Clinton	12/10/2011
DA/443/2011	Workers Accommodation (55 units)	1906 Dawson Highway, Calliope	12/10/2011
DA/442/2011	Extractive Industry & ERA 50 (Bulk Material Handling)	Charters Crossing Road, Taragoola	11/10/2011
DA/441/2011	RaL - Residential - 1 lot into 6 lots in 2 stages	41 McLeod Street, Boyne Island	11/10/2011
DA/440/2011	Boundary Realignment (2 into 2)	151 Oaka Lane, Gladstone	10/10/2011

PLANNING - DELEGATED DECISIONS - OCTOBER 2011

Application No.	Development	Location	Decision Date
DA/436/2011	Boundary Realignment (2 into 2)	31 Raglan Street, Mount Larcom	27/10/2011
DA/127/2010	RaL - 2 into 9 lots	49875 & 50007 Bruce Highway, Calliope	25/10/2011 (Negotiated)
DA/298/2011	Office	15 Lord Street, Gladstone	21/10/2011 (Negotiated)
DA/301/2011	Extension of Existing Premises (Hotel)	264 Coast Road, Baffle Creek	21/10/2011 (Negotiated)
DA/320/2011	Community Facility (Radio Station)	1 Uniting Place, Telina	25/10/2011
DA/327/2011	Bulk Store	42 Bensted Road, Callemondah	06/10/2011
DA/363/2011	Local Industry (5 Tenancy Industrial Complex)	8 Helen Street, Clinton	17/10/2011
DA/370/2011	RaL - 1 into 2	25 Siding Road, Beecher	24/10/2011
DA/393/2011	Vehicle Machinery Sales & Hire	18 Neil Street, Clinton	07/10/2011
DA/413/2011	RaL - 1 into 2 (GPC)	Curtis Island	24/10/2011
DA/417/2011	Shop	136 Goondoon Street, Gladstone	28/10/2011
DA/431/2011	Food Premises (Shop 4)	Shop 4, 11 Herbert Street, Gladstone	25/10/2011
DA/280/2011	Multiple Unit Residential (4 units)	2 Nothling Street, New Auckland	04/10/2011

PLANNING - COUNCIL DECISION - OCTOBER 2011

Application No.	Development	Location	Decision Date
DA/20634/2008	MCU & RaL - 1 into 45 residential lots (Pacific Rise Estate)	70 Silverton Drive, Tannum Sands	4/10/2011
DA/77/2009	Multiple Unit Residential (31 units)	Lot 2 Sun Valley Road, Kin Kora	04/10/2011
DA/255/2010	Multiple Unit Residential (41 units)	112 Sun Valley Road, Kin Kora	04/10/2011
DA/261/2010	Multiple Unit Residential (36 units) including Manager's Residence and Ancillary Community Centre	2 Pioneer Drive, Telina	04/10/2011
DA/328/2011	Warehouse & Shop	42 Bensted Road, Callemondah	04/10/2011
DA/332/2011	Multiple Unit Residential (4 units)	192 Auckland Street, South Gladstone	04/10/2011
DA/343/2011	Multiple Unit Residential (24 units)	8-10 Boles Street, West Gladstone	18/10/2011
DA/353/2011	Duplex	159 J Hickey Avenue, Clinton	18/10/2011
DA/354/2011	Service Station, Fuel Depot, Office & ERA	2 Boowan Court, Callemondah	18/10/2011
DA/365/2011	Duplex	7 Centaurus Close, Telina	18/10/2011
DA/367/2011	Multiple Unit Residential (8 units)	25 Rossella Street, West Gladstone	18/10/2011
DA/386/2011	Offices (Ground Floor)	143 Auckland Street, Gladstone	18/10/2011
DA/400/2011	Multiple Unit Residential (3 units)	97 Toolooa Street, South Gladstone	18/10/2011
DA/352/2011	Small Lot Housing & RaL - 1 into 2	26 Mellefont Street, West Gladstone	18/10/2011 (Refusal)

OPERATIONAL WORKS - NEW APPLICATIONS LODGED - OCTOBER 2011

Application No.	Development	Location	Date Lodged
OPW/212/2011	Landscaping (McDonalds)	31-37 Glenlyon Street, Gladstone	28/10/2011
OPW/211/2011	Earthworks (Eden Chase Stages 9 & 10)	Lot 900 Glen Eden Drive, Glen Eden	28/10/2011
OPW/210/2011	Stormwater, Drainage Works, Earthworks, Footpath, Driveway & Carparking (5 units)	14 Short Street, South Gladstone	28/10/2011
OPW/209/2011	Roadworks, Stormwater, Drainage Works, Earthworks, & Water Infrastructure (Brookview Estate - External Works)	Lot 1 Dean Street, Glen Eden	27/10/2011
OPW/208/2011	Advertising Signs (Forest Springs Estate)	Lot 903 Parksville Drive, Nw Auckland	26/10/2011

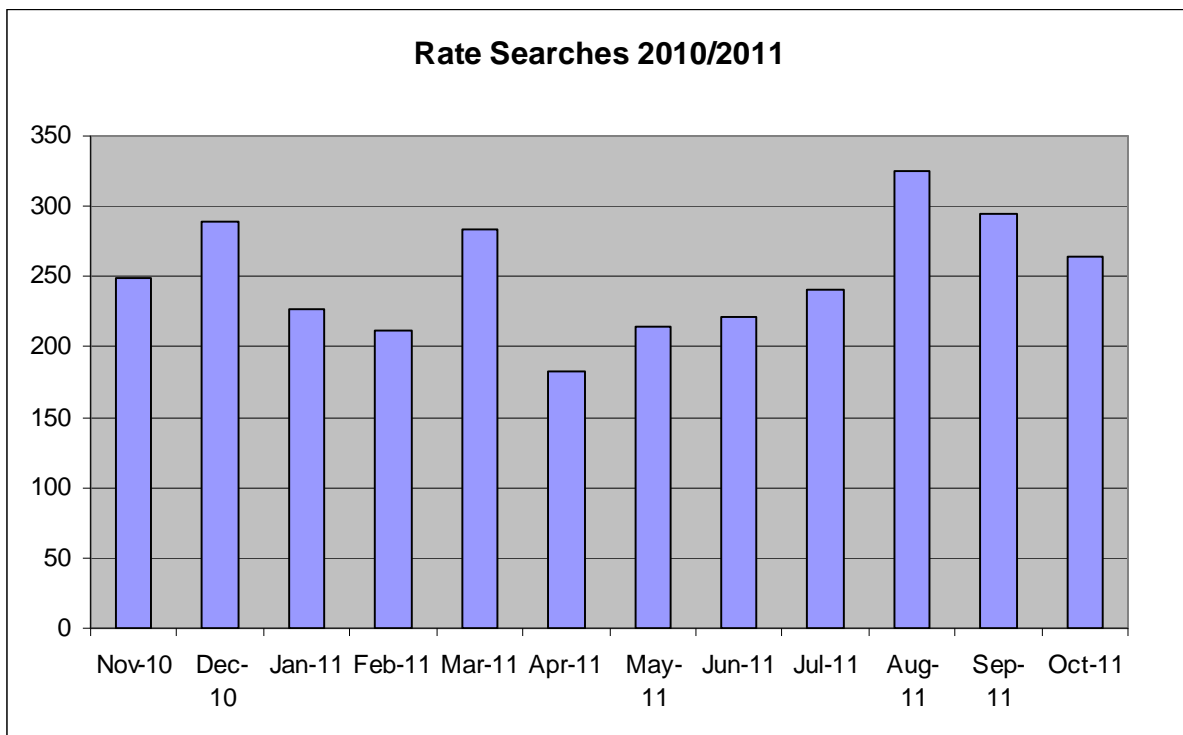
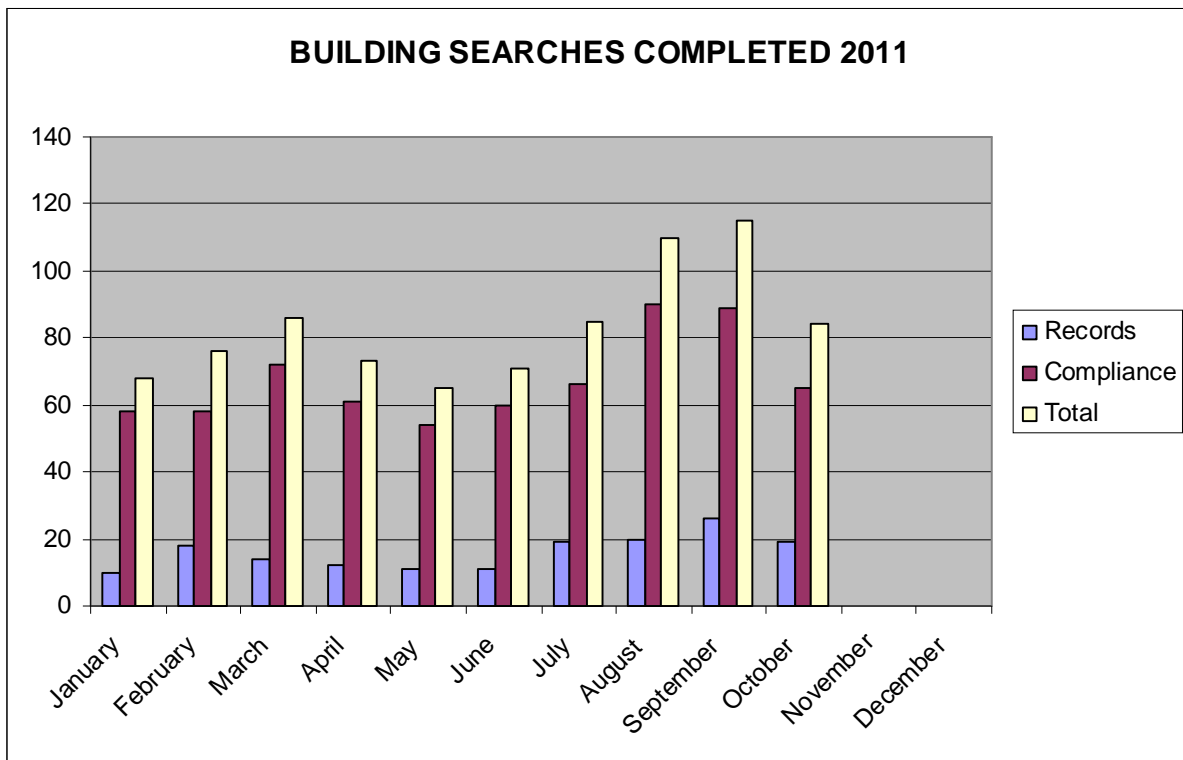
Application No.	Development	Location	Date Lodged
OPW/207/2011	Roadworks, Stormwater, Drainage Works & Earthworks (Calliope River Road Workers Accommodation - Stage 2 -	101 Calliope River Road, West Stowe	12/10/2011
OPW/206/2011	Earthworks (Stockwood Estate)	Lot 201 Kirkwood Road, O'Connell	12/10/2011
OPW/205/2011	Roadworks, Stormwater, Drainage Works, Water & Sewer Infrastructure (Stockwood Estate - 43 residential lots)	Lot 201 Kirkwood Road, O'Connell	12/10/2011
OPW/204/2011	Sewerage Infrastructure (Stockwood Estate - External Sewerage Infrastructure)	803 Glenlyon Road, Glen Eden	12/10/2011
OPW/203/2011	Roadworks, Stormwater, Water & Sewerage Infrastructure (Duplex)	3 Brando Lane, West Gladstone	12/10/2011
OPW/202/2011	Roadworks, Stormwater, Water & Sewerage Infrastructure (1 into 2)	1 Brando Lane, West Gladstone	12/10/2011
OPW/201/2011	Retaining Wall & Driveway (Duplex)	3 Gidgee Court, Kin Kora	11/10/2011 - NPM
OPW/200/2011	Advertising Signs (Harvey Road Tavern & Dan Murphys)	Lot 1 Harvey Road, Clinton	11/10/2011
OPW/199/2011	Roadworks, Drainage, Landscaping, Stormwater, Earthworks, Water & Sewerage Infrastructure (Byellee Estate - 75 rural residential lots)	Lot 95 Dawson Highway, Byellee	07/10/2011
OPW/198/2011	Earthworks, Water Infrastructure & Sewerage Infrastructure (1 into 3)	10 Golf View Drive, Boyne Island	07/10/2011 - NPM
OPW/197/2011	Stormwater & Driveway (Extension & Alteration to Shopping Centre)	2 Chapman Drive, Clinton	05/10/2011
OPW/196/2011	Roadworks, Stormwater, Drainage Works, Earthworks & Water Infrastructure (Araluen Park Estate Stage 1 - 15 rural residential lots)	2320 Dawson Highway, Calliope	03/10/2011
OPW/195/2011	Advertising Signs (Office)	130 Auckland Street, Gladstone	03/10/2011

OPERATIONAL WORKS - DELEGATED DECISIONS - OCTOBER 2011

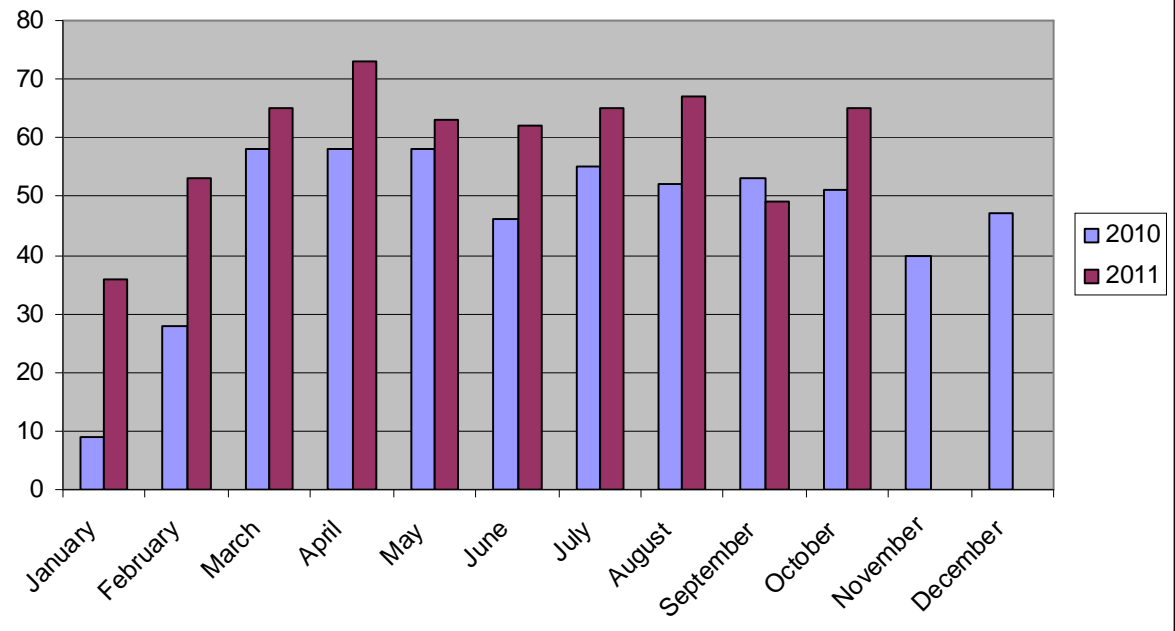
Application No.	Development	Location	Decision Date
OPW/122/2011	Landscaping, Driveway, Stormwater, Earthworks, Water & Sewer Infrastructure (3 lots)	12 Trinity Place, Sun Valley	06/10/2011
OPW/151/2011	Roadworks, Stormwater, Earthworks, Water & Sewer Infrastructure (Morris Avenue, 4 lots - Stage 2)	2041 Dawson Highway, Calliope	20/10/2011

Application No.	Development	Location	Decision Date
OPW/157/2011	Stormwater (Dan Murphys Bottle Shop)	Lot 1 Harvey Road, Clinton	26/10/2011
OPW/159/2011	Roadworks, Stormwater, Drainage Works, Earthworks, Water & Sewerage Infrastructure (Calliope Chase Estate Stages 11A & 11B - 37 lots)	Central Avenue, Calliope	18/10/2011
OPW/160/2011	Operational Works (Beecher Estate Stage 6 - 12 lots)	261 Jim Whyte Way, Beecher	18/10/2011
OPW/161/2011	Landscaping (10 units)	11 Glenlyon Street, Gladstone	07/10/2011
OPW/170/2011	Roadworks, Stormwater, Earthworks (Machinery & Transport Depot)	51436 Bruce Highway, West Stowe	19/10/2011
OPW/172/2011	Earthworks & Clearing Vegetation (Vantage Stage 6)	Lot 505 Kirkwood Road, New Auckland	13/10/2011
OPW/173/2011	Landscaping (Little Creek Estate Stage 13)	Lot 902 Kirkwood Road, Kirkwood	26/10/2011
OPW/175/2011	Landscaping (Little Creek Estate Stage 12)	Lot 902 Kirkwood Road, Kirkwood	26/10/2011
OPW/177/2011	Bulk Earthworks & Sewerage Infrastructure	South Trees Drive, South Trees	19/10/2011
OPW/180/2011	Roadworks, Stormwater, Drainage Works, Earthworks & Sewerage Infrastructure (63 units)	64 Glenlyon Street, Gladstone	26/10/2011
OPW/181/2011	Landscaping (Little Creek Estate Stage 14)	Lot 902 Kirkwood Road, Kirkwood	26/10/2011
OPW/182/2011	Landscaping (Little Creek Estate External Works)	Lot 902 Kirkwood Road, Kirkwood	26/10/2011
OPW/183/2011	Landscaping (Little Creek Estate Park)	Lot 902 Kirkwood Road, Kirkwood	26/10/2011
OPW/188/2011	Drainage Works, Earthworks, Vehicle Access (9 units)	4 The Promenade, Boyne Island	18/10/2011
OPW/192/2011	Stormwater, Water & Sewerage Infrastructure (2 lots)	18 Panorama Court, Glen Eden	26/10/2011
OPW/200/2011	Advertising Signs (Harvey Road Tavern & Dan Murphys)	Lot 1 Harvey Road, Clinton	21/10/2011

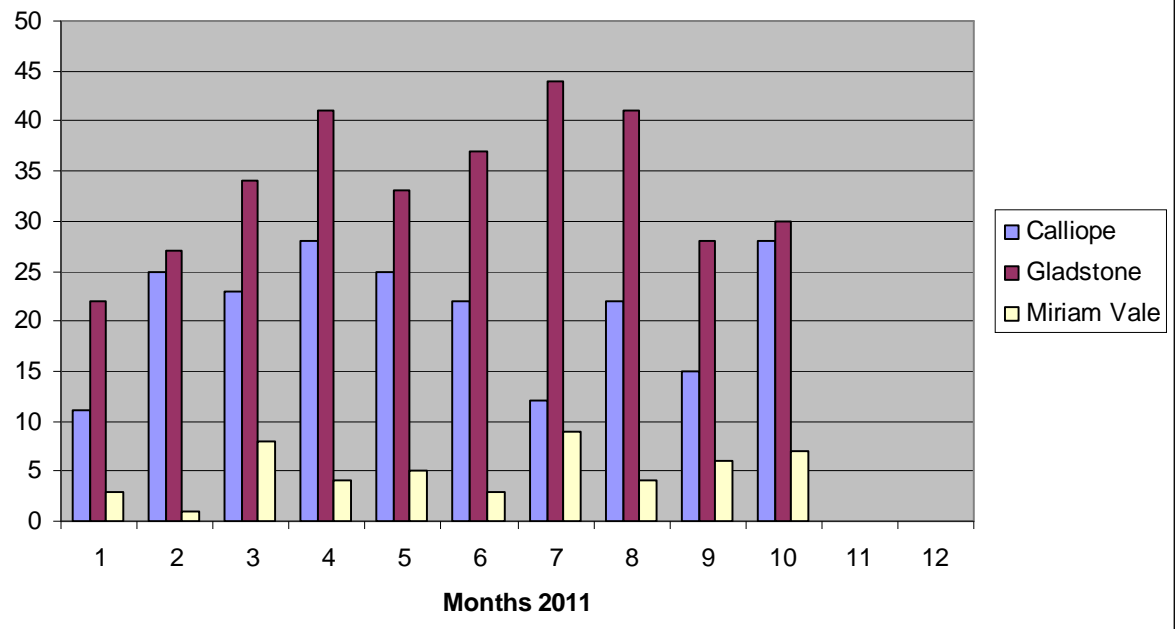
BUILDING SECTION STATISTICS

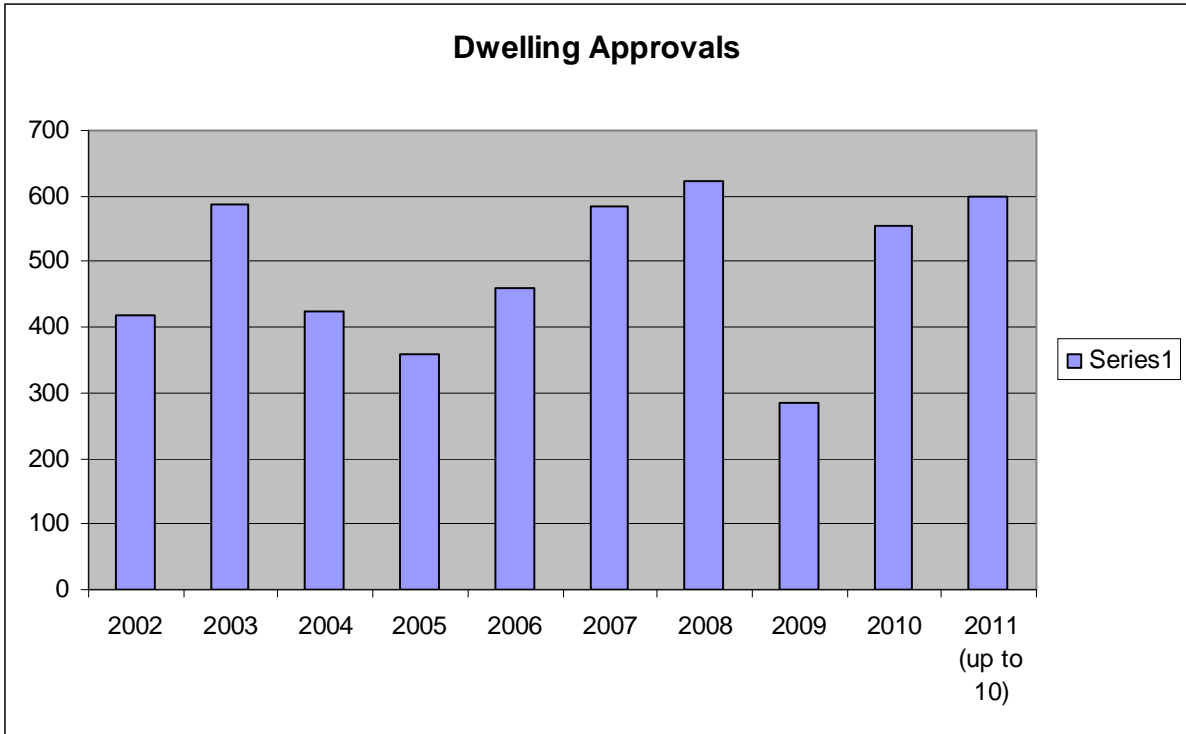


NEW DWELLING COMPARISON 2010/2011



New Dwelling Approvals by Area





2 November 2011