



Development Services

Development Statistics - November 2011

The information below is provided to Councillors for the month of November 2011 in the following areas:-

- New planning applications lodged
- Delegated planning approvals
- Council planning approvals
- Delegated operational works approvals
- Graph showing Building Searches completed for 2011
- Graph showing Rate Searches completed 2010/2011
- Graph showing New Dwelling Approval Comparison for 2010/2011
- Graph showing New Dwelling Approvals 2002-2011
- Graph showing New Dwelling Approvals 2011 broken down into LG area.

PLANNING - NEW APPLICATIONS LODGED - NOVEMBER 2011

Application No.	Development	Location	Date Lodged
DA/474/2011	Duplex	17 Koowin Drive, Kirkwood	25/11/2011
DA/473/2011	Reconfiguring a Lot - 2 into 30 (Beecher Estates Stage 8A)	204 Jim Whyte Way, Burua	23/11/2011
DA/472/2011	Shopping Centre	75 Dawson Highway, New Auckland	22/11/2011
DA/471/2011	Multiple Unit Residential (23 units)	40 Kent Street, West Gladstone	22/11/2011
DA/470/2011	Multiple Dwelling (6 units)	6 Ocean Ridge & 3 The Promenade, Agnes Water	22/11/2011
DA/469/2011	Reconfiguring a Lot - 1 into 32 & Small Lot Housing	33 Bradford Road, Telina	17/11/2011
DA/468/2011	Multiple Unit Residential (11 units)	39 Scenery Street, West Gladstone	17/11/2011

Application No.	Development	Location	Date Lodged
DA/467/2011	Preliminary Approval for a Material Change of Use - Change in Density (Rural Residential Zone to Residential Zone), Residential Secondary (Duplex) on Nominated 800m2 lots, Estate Sales, Display Home and Reconfiguration of a Lot (1 into 104 plus Balance Lot in Four Stages & Access Easements) - (Boundary Road Residential Estate)	10 Boundary Road, Beecher	16/11/2011
DA/466/2011	Dual Occupancy	16 Waterfront Drive, Agnes Water	14/11/2011
DA/465/2011	Extension to Medical Centre	2041 Dawson Highway, Calliope	10/11/2011
DA/464/2011	Boundary Realignment (2 into 2)	50148 Bruce Highway, Calliope	09/11/2011
DA/463/2011	Multiple Unit Residential (23 units)	97 Central Lane, Gladstone	08/11/2011
DA/462/2011	Motel (144 units) (The Grand Apartments)	79 Goondoon Street, Gladstone	07/11/2011
DA/445/2011	Multiple Unit Residential (6 units)	27 Roberts Street, South Gladstone	01/11/2011

PLANNING - DELEGATED DECISIONS - NOVEMBER 2011

Application No.	Development	Location	Decision Date
DA/350/2011	Workers Accommodation (51436 Bruce Highway, West Stowe	23/11/2011
DA/395/2011	RaL - 1 into 2	2 Beelzey Street, Glen Eden	11/11/2011
DA/422/2011	Medical Centre Extension	8 Tank Street, Gladstone	07/11/2011
DA/430/2011	Multiple Unit Residential (3 units)	17 French Street, South Gladstone	09/11/2011

PLANNING - COUNCIL DECISION - NOVEMBER 2011

Application No.	Development	Location	Decision Date
DA/310/2011	Multiple Unit Residential (11 units)	68 Glenlyon Street, Gladstone	16/11/2011
DA/337/2011	Multiple Unit Residential (18 units)	8 Scenery Street, West Gladstone	16/11/2011
DA/348/2011	MCU (Small Lot Housing) & RaL - 1 into 2	2 The Oaks Road, Tannum Sands	02/11/2011
DA/351/2011	Multiple Unit Residential (12 units)	5 Murray Street, West Gladstone	16/11/2011
DA/382/2011	Multiple Unit Residential (20 units)	38 & 38A Kent Street, West Gladstone	02/11/2011

Application No.	Development	Location	Decision Date
DA/188/2010	Multiple Unit Residential (3 Units) & RaL 1 into 2 & Boundary Realignment	12 Gapparis Street & 146 Sun Valley Road, Kin Kora	02/11/2011
DA/20621/2008	Preliminary Approval Overriding the Planning Scheme for a Master Planned Urban Community "Riverstone Rise"	Gladstone-Benaraby Road, Wurdong Heights	02/11/2011 - Negotiated

OPERATIONAL WORKS - NEW APPLICATIONS LODGED - NOVEMBER 2011

Application No.	Development	Location	Date Lodged
OPW/232/2011	Warehouse with Showroom & Offices	42 Bensted Road, Callemondah	30/11/2011
OPW/231/2011	Roadworks, Stormwater, Drainage Works, Earthworks, Signage, Clearing Vegetation, Water & Sewerage Infrastructure (Little Creek Stage 17A)	Lot 902 Kirkwood Road, Kirkwood	28/11/2011
OPW/230/2011	Roadworks, Stormwater, Drainage Works, Earthworks, Water & Sewerage Infrastructure (Brookview Estate Stage 1)	Lot 4 Glenlyon Road, Glen Eden	22/11/2011
OPW/229/2011	Roadworks, Stormwater, Drainage Works, Earthworks, Signage, Clearing Vegetation, Water & Sewerage Infrastructure (Little Creek Stage 16)	Lot 902 Kirkwood Road, Kirkwood	22/11/2011
OPW/228/2011	Roadworks, Stormwater, Drainage Works, Earthworks, Signage, Clearing Vegetation, Water & Sewerage Infrastructure (Panorama Estate Stages 1 & 2)	85 Morcom Street, Calliope	22/11/2011
OPW/227/2011	Bulk Earthworks (Calliope River Road Workers Accommodation)	101 Calliope River Road, West Stowe	22/11/2011
OPW/226/2011	Roadworks, Stormwater, Drainage Works, Water & Sewerage Infrastructure (2 lots)	31 John Dory Drive, Toolooa	17/11/2011
OPW/225/2011	Advertising Sign (Dan Murphys)	Lot 1 Harvey Road, Clinton	15/11/2011
OPW/224/2011	Roadworks, Stormwater, Drainage Works, Earthworks & Sewerage Infrastructure (Multiple Unit Residential 49 Units & Retail Food Premises)	30 Goondoon Street, Gladstone	15/11/2011
OPW/223/2011	Roadworks, Stormwater, Drainage Works, Earthworks, Signage, Clearing Vegetation, Water & Sewerage Infrastructure (Little Creek Stage 15)	Lot 902 Kirkwood Road, Kirkwood	15/11/2011

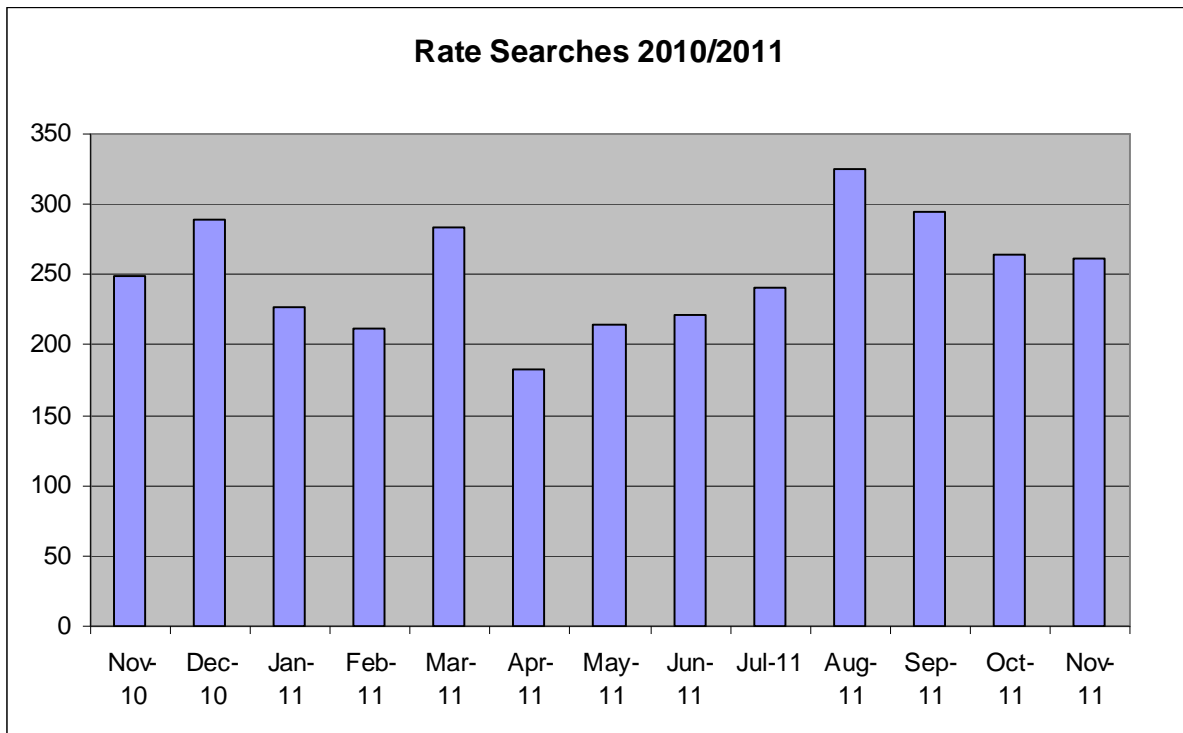
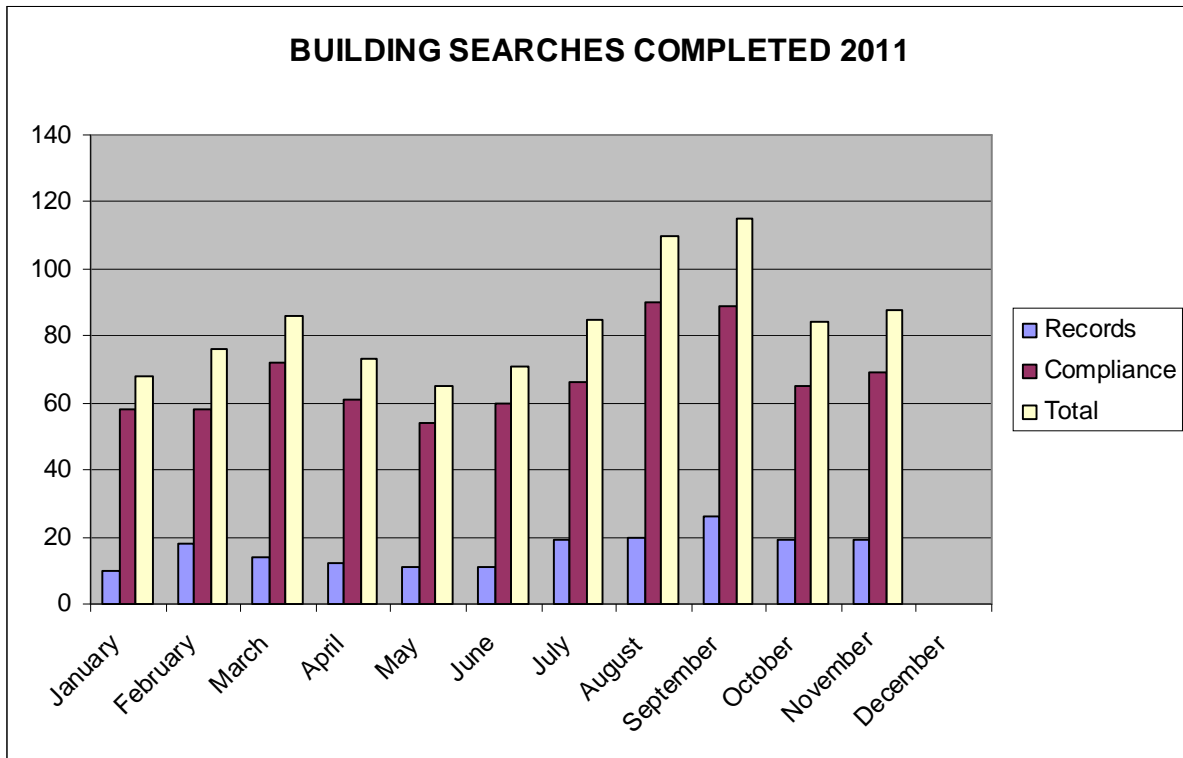
Application No.	Development	Location	Date Lodged
OPW/222/2011	Roadworks, Stormwater, Drainage Works, Earthworks, Water & Sewerage Infrastructure (Vantage Estate Stage 6)	Lot 505 Kirkwood Road, New Auckland	15/11/2011
OPW/221/2011	Stormwater, Drainage, Earthworks & Landscaping (4 townhouses)	230 Auckland Street, South Gladstone	14/11/2011
OPW/220/2011	Roadworks, Stormwater, Drainage Works, Earthworks, Signage, Water & Sewer Infrastructure (Elliot's Run Estate Stage 2)	Arthur Hulme Way, Calliope	09/11/2011 (NPM)
OPW/219/2011	Landscaping (Stockwood Estate)	Lot 201 Kirkwood Road, O'Connell	09/11/2011 (NPM)
OPW/218/2011	Roadworks, Stormwater, Drainage Works, Earthworks, Signage, Clearing Vegetation, Water & Sewerage Infrastructure (Little Creek Stage 20)	Lot 901 Kirkwood Road, Kirkwood	09/11/2011
OPW/217/2011	Roadworks, Stormwater & Earthworks (4 units)	192 Auckland Street, South Gladstone	09/11/2011
OPW/216/2011	Roadworks, Stormwater, Drainage Works, Earthworks, Water & Sewerage Infrastructure (7 units)	40 Yarroon Street, Gladstone	04/11/2011
OPW/215/2011	Stormwater, Drainage Works, Earthworks, Landscaping, Water & Sewerage Infrastructure (Woolworths Service Station)	Lot 901 Parksville Drive, New Auckland	04/11/2011
OPW/214/2011	Roadworks, Stormwater, Earthworks, Landscaping, Water & Sewerage Infrastructure (13 units)	26 Rossella Street, West Gladstone	03/11/2011
OPW/213/2011	Roadworks, Stormwater, Drainage Works, Earthworks, Signage, Water & Sewerage Infrastructure (Elliot's Run Estate Stage 3)	Arthur Hulme Way, Calliope	03/11/2011 (NPM)

OPERATIONAL WORKS - DELEGATED DECISIONS - NOVEMBER 2011

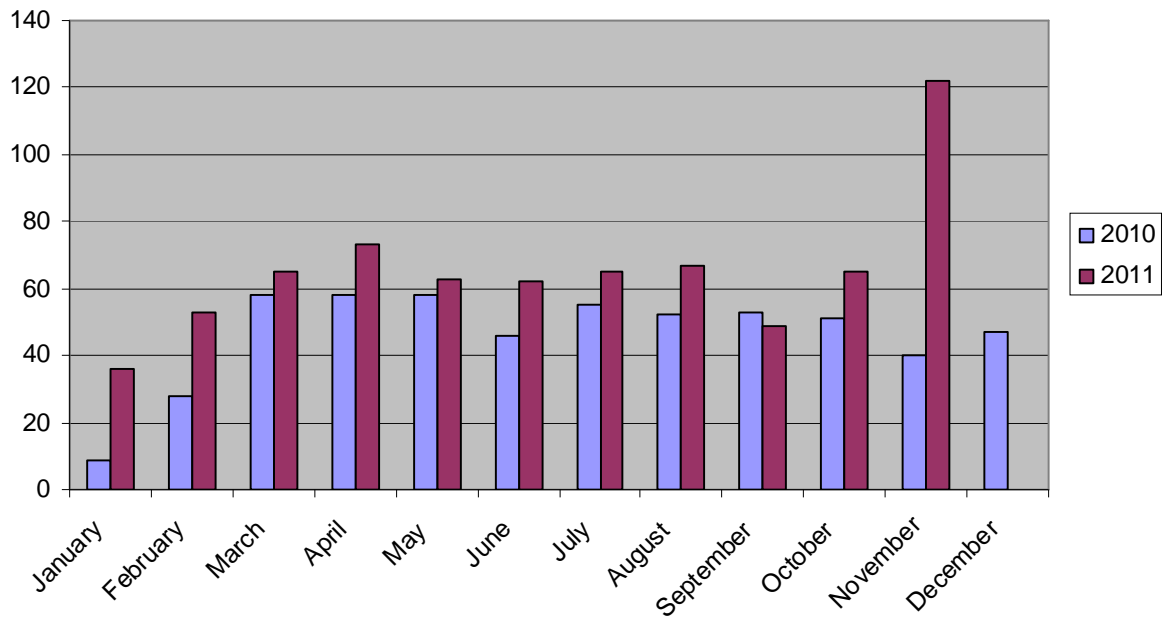
Application No.	Development	Location	Decision Date
OPW/8407/2007	Roadworks, Earthworks, Stormwater, Water & Sewerage Infrastructure (Forest Springs Estate Stage 1 & 2, 111 lots)	Lot 900 Parksville Drive, New Auckland	07/11/2011 - Modified

Application No.	Development	Location	Decision Date
OPW/178/2011	Roadworks, Stormwater, Drainage Works, Earthworks, Signage, Water & Sewerage Infrastructure (Elliot's Run Estate Stage 1, 35 lots)	Lot 101 Arthur Hulme Way, Calliope	09/11/2011
OPW/179/2011	Stormwater, Drainage Works, Earthworks, Sewerage Infrastructure (2 lots)	12 Lauren Court, South Gladstone	23/11/2011
OPW/194/2011	Roadworks, Stormwater, Drainage Works, Earthworks & Sewerage Infrastructure (34 units)	64 Glenlyon Street, Gladstone	07/11/2011
OPW/197/2011	Stormwater & Driveway (Shopping Centre)	2 Chapman Drive, Clinton	07/11/2011
OPW/208/2011	Advertising Signs (Forest Springs Estate)	Lot 903 Parksville Drive, New Auckland	03/11/2011
OPW/211/2011	Earthworks (Eden Chase Stage 9 & 10, 48 lots)	Lot 900 Glen Eden Drive, Glen Eden	08/11/2011
OPW/225/2011	Advertising Device (Dan Murphys)	Lot 1 Harvey Road, Clinton	16/11/2011
OPW/124/2011	Roadworks, Earthworks, Landscaping & Water Infrastructure (Beecher Estates Stage 10B1, 8 lots)	296 Jim Whyte Way, Beecher	14/11/2011 - modified

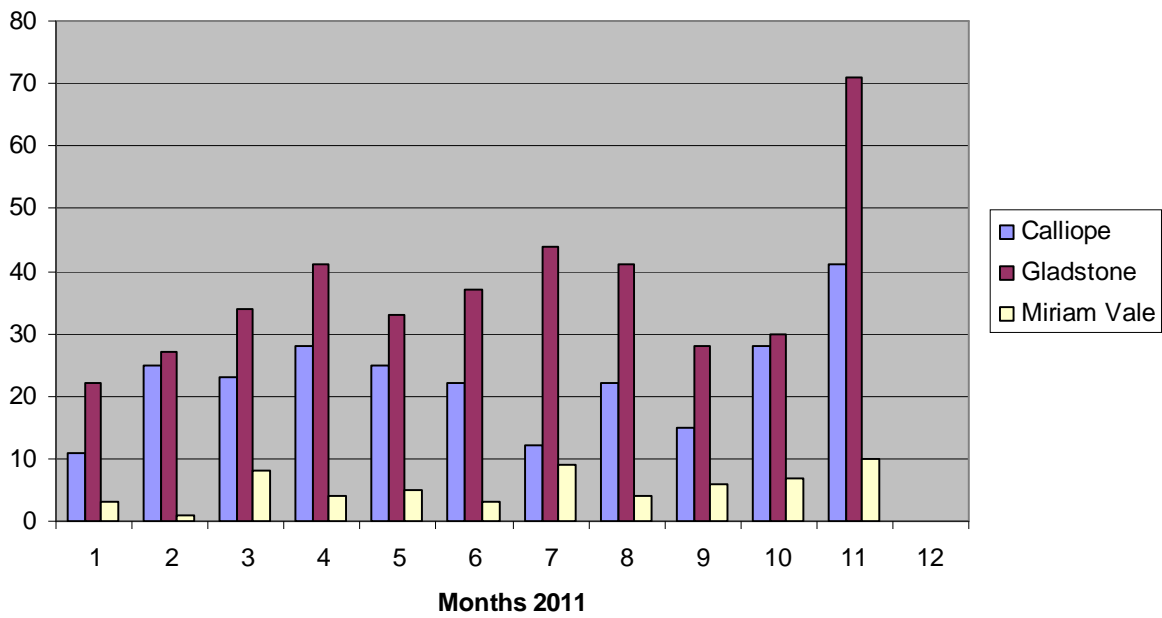
BUILDING SECTION STATISTICS

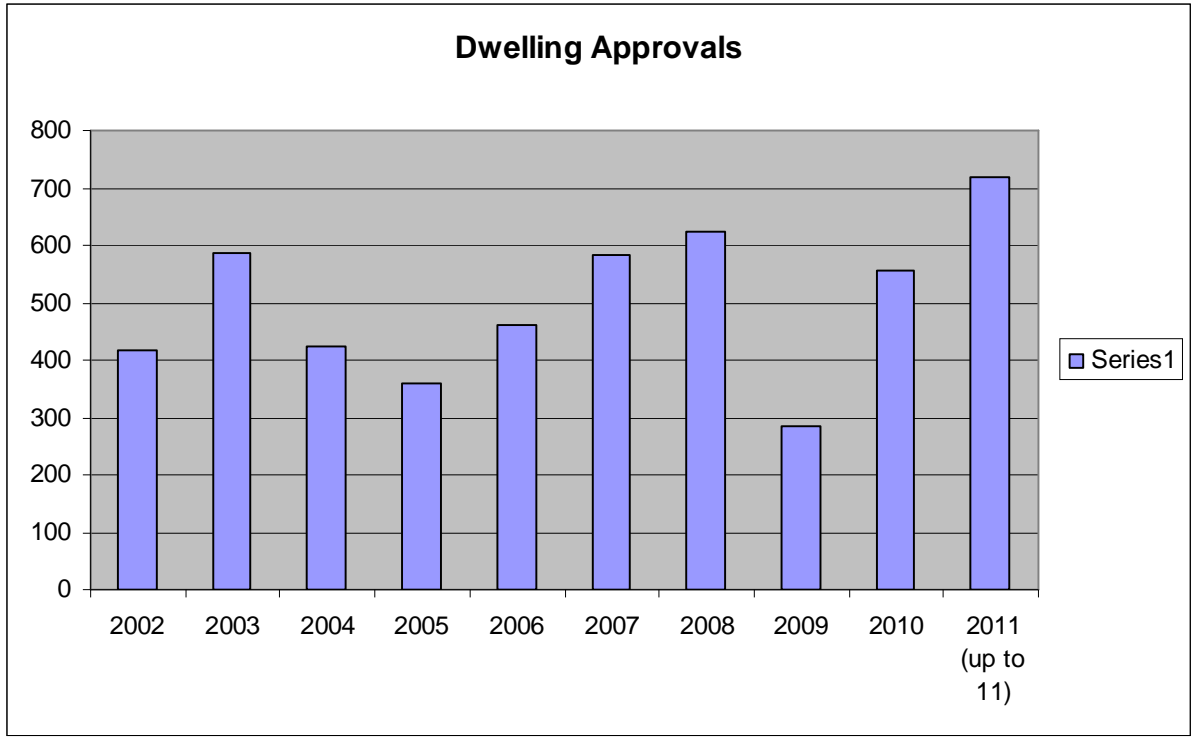


NEW DWELLING COMPARISON 2010/2011



New Dwelling Approvals by Area





2 December 2011