



Development Services

14/2012

Subject: DEVELOPMENT STATISTICS – AUGUST 2012

File Reference: DB10.2

The information below is provided for the month of August 2012 in the following areas:-

- New planning applications lodged
- Delegated planning approvals
- Council planning approvals
- Graph Showing Planning Lodgements & Approvals
- New operational works applications lodged
- Delegated Operational works approvals
- Graph Showing Operational Works Lodgements & Approvals
- Graph showing Building Searches completed for 2009-2012
- Graph showing Rate Searches completed 2010/2011/2012
- Graph showing New Dwelling Approval Comparison for 2009-2012
- Graph showing New Dwelling Approvals broken down into LG area.
- Graph showing Pool Safety Certificates Issued
- Graph showing Building & Plumbing Inspections conducted

PLANNING - NEW APPLICATIONS LODGED – August 2012

| Application No. | Development | Location | Date Lodged |
|------------------------|---|---|--------------------|
| DA/683/2012 | Multiple Unit Residential (5 Units) | 12 Ailsa Street, WEST GLADSTONE QLD 4680 | 7/8/2012 |
| DA/684/2012 | Multiple Unit Residential (66 Units) | 40 Glenlyon Street, GLADSTONE QLD 4680 | 7/8/2012 |
| DA/685/2012 | Reconfiguring a Lot (3 into 5) | 203 Jim Whyte Way, BURUA QLD 4680 | 9/8/2012 |
| DA/686/2012 | Duplex Unit | 2 Wentworth Place, GLEN EDEN QLD 4680 | 9/8/2012 |
| DA/687/2012 | Workers Accommodation & Supporting Ancillary Uses | 1195 Calliope River Road, WEST STOWE QLD 4680 | 13/8/2012 |
| DA/688/2012 | Transport & Storage (Warehouse) | 44 Toolooa Street, SOUTH GLADSTONE QLD 4680 | 16/8/2012 |
| DA/689/2012 | Residential / Industrial Land Use (Other Not Defined) and Reconfiguration of a Lot (1 into 2) | 47 Dickinson Road, NEW AUCKLAND QLD 4680 | 21/8/2012 |
| DA/690/2012 | Multiple Unit Residential (18 Units) | 15 Kent Street, WEST GLADSTONE QLD 4680 | 22/8/2012 |
| DA/691/2012 | Change to Residential & Reconfiguration of a Lot (1 into 12) and road dedication | 716 Glenlyon Road, GLEN EDEN QLD 4680 | 23/8/2012 |

| | | | |
|-------------|---|---|-----------|
| DA/692/2012 | Child Care Centre | 60 Findling Road, BOYNE ISLAND QLD 4680 | 23/8/2012 |
| DA/694/2012 | Display Home | 2 Creekview Drive, NEW AUCKLAND QLD 4680 | 24/8/2012 |
| DA/695/2012 | Multiple Unit Residential (30 Units) | 38 Barney Street, BARNEY POINT QLD 4680 | 27/8/2012 |
| DA/696/2012 | Shop | 35-37 Gladstone-Benaraby Road, TOOLOOA QLD 4680 | 28/8/2012 |
| DA/697/2012 | Showroom | 35 Gladstone-Benaraby Road, TOOLOOA QLD 4680 | 29/8/2012 |
| DA/698/2012 | Residential Other - Multiple Unit Residential | 39 Stirrat Street, CALLIOPE QLD 4680 | 31/8/2012 |
| DA/699/2012 | Expansion to existing Shopping Centre | Lot 87 RP 611756, Dawson Highway, WEST GLADSTONE QLD 4680 | 31/8/2012 |
| DA/700/2012 | Display Home | 1 Sundew Street, NEW AUCKLAND QLD 4680 | 31/8/2012 |

PLANNING - DELEGATED DECISIONS – August 2012

| Application No. | Development | Location | Decision Date |
|------------------------|--|---|----------------------|
| DA/571/2012 | Transport & Storage (Warehouse) | 6 Boowan Court, CALLEMONDAH QLD 4680 | 28/8/2012 |
| DA/553/2012 | Multiple Unit Residential (5 Units) | 3 Crest Avenue BOYNE ISLAND QLD 4680 | 28/8/2012 |
| DA/526/2012 | Office | 93 Goondoon Street GLADSTONE QLD 4680 | 22/8/2012 |
| DA/681/2012 | Local Surgery (Dentist) | 85 Sun Valley Road SUN VALLEY QLD 4680 | 24/8/2012 |
| DA/627/2012 | Warehouse and Showroom | 60 Hanson Road, GLADSTONE QLD 4680 | 24/8/2012 |
| DA/631/2012 | Boundary Realignment (3 into 3) | 180 Neil Creek Road, WOODERSON QLD 4680 | 15/8/2012 |
| DA/674/2012 | Boundary Realignment 2 into 2 | 17 & 19 Beach Avenue TANNUM SANDS QLD 4680 | 29/8/2012 |
| DA/613/2012 | Narrows Bundled Crossing Central (Narrows) Section | 820 Targinie Road TARGINIE QLD 4694 | 2/8/2012 |
| DA/624/2012 | Estate Sales Office & Site Office | Lot 903 SP 246177, Creekview Drive, NEW AUCKLAND QLD 4680 | 24/8/2012 |
| DA/376/2011 | Extension and Upgrade to Sewerage Treatment Plant (Public Utility (Major)) | Lot 21 SP 168519, Yabby Road ROUND HILL QLD 4677 | 1/8/2012 |
| DA/672/2012 | Sport and Recreation (Valley Grounds Club House) | Pt(zz) Lot 206 SP 111013, Anderson Street CLINTON QLD 4680 | 28/8/2012 |
| DA/678/20125 | Reconfiguring of a Lot (1 into 3) | TL 234259 : Lot 2 SP 228185, Curtis Unnamed Road CURTIS ISLAND QLD 4680 | 30/8/2012 |
| DA/497/2011 | Reconfiguring a Lot (1 into 4) | 33 Balfour Street, MOUNT LARCOM QLD 4695 | 2/8/2012 |

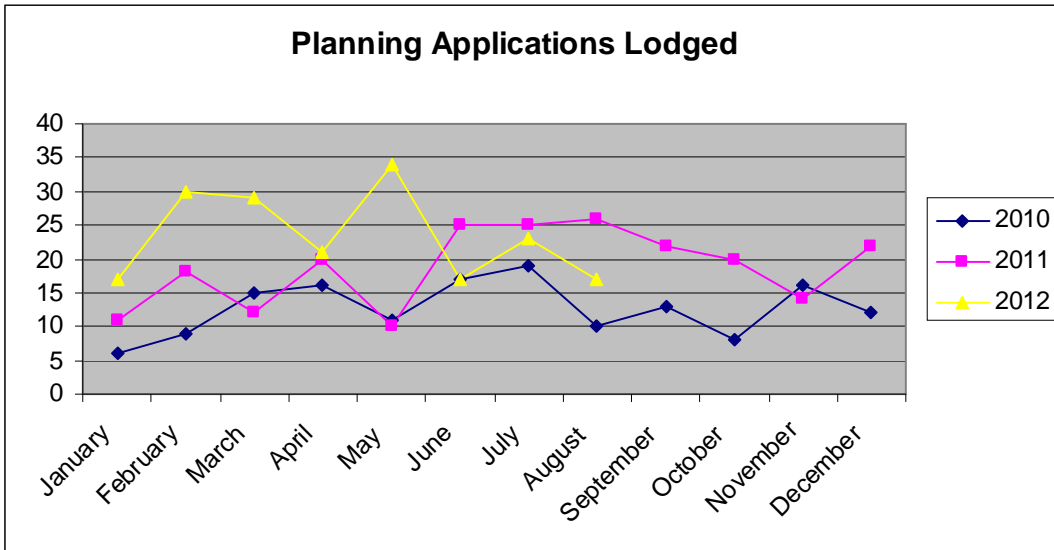
PLANNING – COUNCIL DECISIONS – August 2012

| Application No. | Development | Location | Decision Date |
|------------------------|--|--|----------------------|
| DA/556/2012 | Small lot Housing & Reconfiguring a Lot (3 into 4) | 40-44 Wattle Street NEW AUCKLAND QLD 4680 | 21/8/2012 |
| DA/628/2012 | Estate Sales Office | Lot 4 SP 225799, Glenlyon Road GLEN EDEN QLD 4680 | 21/8/2012 |
| DA/639/2012 | Duplex Unit | 89 Col Brown Avenue CLINTON QLD 4680 | 7/8/2012 |
| DA/570/2012 | Multiple Unit Residential (6 Town Houses) | 67 Flinders Parade GLADSTONE QLD 4680 | 7/8/2012 |
| DA/578/2012 | Medical Centre & Office (Business) | 2 Goondoon Street GLADSTONE QLD 4680 | 7/8/2012 |
| DA/597/2012 | Multiple Unit Residential (4 Units) | 133 Toolooa Street SOUTH GLADSTONE QLD 4680 | 7/8/2012 |
| DA/590/2012 | Workshop & Office Extensions to Vehicle & Machinery Sales and Hire (Industry Low Impact) | 58 Yarroon Street GLADSTONE QLD 4680 | 22/8/2012 |
| DA/614/2012 | Duplex Unit | 25 Beaver Avenue SOUTH GLADSTONE QLD 4680 | 21/8/2012 |
| DA/561/2012 | Duplex Unit | 81 Koowin Drive, KIRKWOOD QLD 4680 | 22/8/2012 |
| DA/610/2012 | Small Lot Housing & Reconfiguration of a Lot (1 into 2) | 6 Cressbrook Street CLINTON QLD 4680 | 23/8/2012 |
| DA/496/2011 | Motel, Caravan & Relocatable Home Park, and Travel Centre & Environmentally Relevant Activity 8 - Chemical Storage | 1906 Dawson Highway, CALLIOPE QLD 4680 | 7/8/2012 |
| DA/607/2012 | Duplex Unit | 11 Beaver Avenue SOUTH GLADSTONE QLD 4680 | 7/8/2012 |
| DA/541/2012 | Multiple Unit Residential (52 Units) | Lot 508 SP 247064, Kirkwood Road NEW AUCKLAND QLD 4680 | 7/8/2012 |
| DA/600/2012 | Multiple Unit Residential (6 Units) | 4 Norton Lane, WEST GLADSTONE QLD 4680 | 14/8/2012 |
| DA/594/2012 | Multiple Unit Residential (6 Units), Medical Centre & Offices | 5 -7 Booth Avenue, TANNUM SANDS QLD 4680 | 7/8/2012 |
| DA/397/2012 | Extractive Industry & Environmentally Relevant Activity No 16 (2) (c) & No 16 (3) (b) | 785 Tableland Road, TAUNTON QLD 4674 | 21/8/2012 |

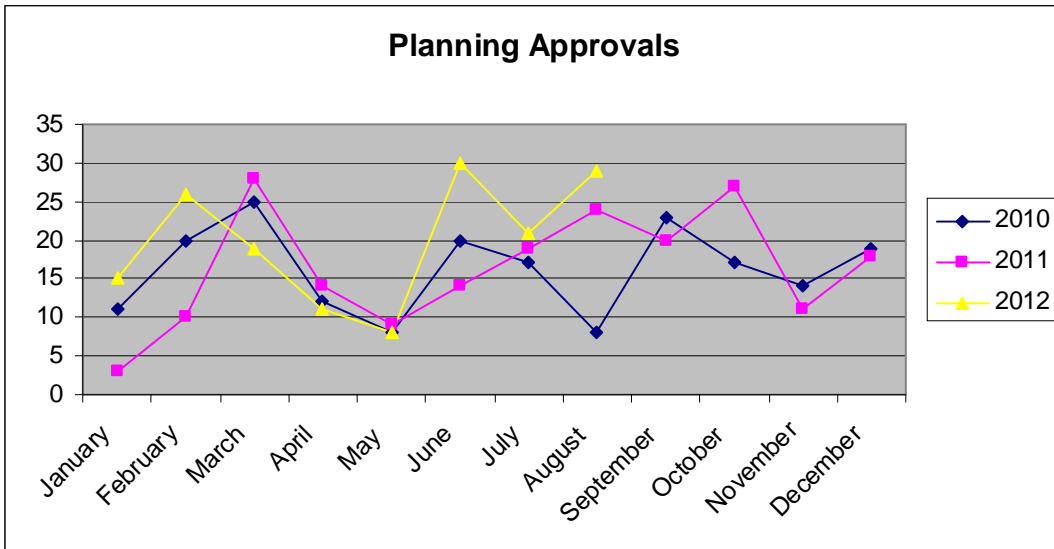
PLANNING - NEGOTIATED DECISIONS – August 2012

| Application No. | Development | Location | Date Approved |
|------------------------|---|---|----------------------|
| DA/419/2011 | Multiple Unit Residential (5 Units) | 5 Ormonde Street, WEST GLADSTONE QLD 4680 | 7/8/2012 |
| DA/507/2012 | Small Lot Housing & Reconfiguring a Lot (1 into 2) | 16 Leichhardt Court GLEN EDEN QLD 4680 | 20/8/2012 |
| DA/574/2012 | Multiple Unit Residential (24 Units) | 20-22 Flinders Street WEST GLADSTONE QLD 4680 | 20/8/2012 |
| DA/494/2011 | Multiple Unit Residential (168 units) & Reconfiguring a Lot (1 into 7) | Lot 4 SP 225799, Glenlyon Road, GLEN EDEN QLD 4680 | 02/8/2012 |
| DA/482/2011 | Motel (68 Units) | 8 Wenitong Street WEST GLADSTONE QLD 4680 | 23/8/2012 |
| DA/371/2011 | Residential Subdivision Stages 8, 9 & 10 & Reconfiguring a Lot (1 into 138) | Lot 508 SP 247064, Kirkwood Road, NEW AUCKLAND QLD 4680 | 6/8/2012 |
| DA/644/2012 | Dual Occupancy | 42 Grahame Colyer Drive, AGNES WATER QLD 4677 | 27/8/2012 |
| DA/588/2012 | Reconfiguring a Lot (1 into 2) | 8 Jenny Lind Court, BOYNE ISLAND QLD 4680 | 22/8/2012 |
| DA/601/2012 | Multiple Unit Residential (6 Units) | 214-216 Oaka Street, SOUTH GLADSTONE QLD 4680 | 24/8/2012 |
| DA/617/2012 | Multiple Unit Residential (5 Town houses) | 62 Flinders Street, WEST GLADSTONE QLD 4680 | 27/8/2012 |

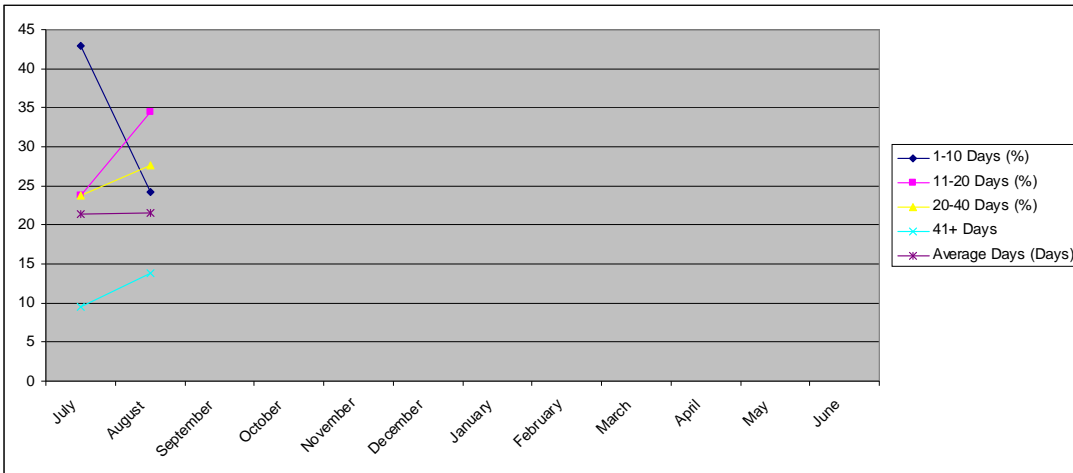
PLANNING APPLICATIONS LODGED 2010-2012



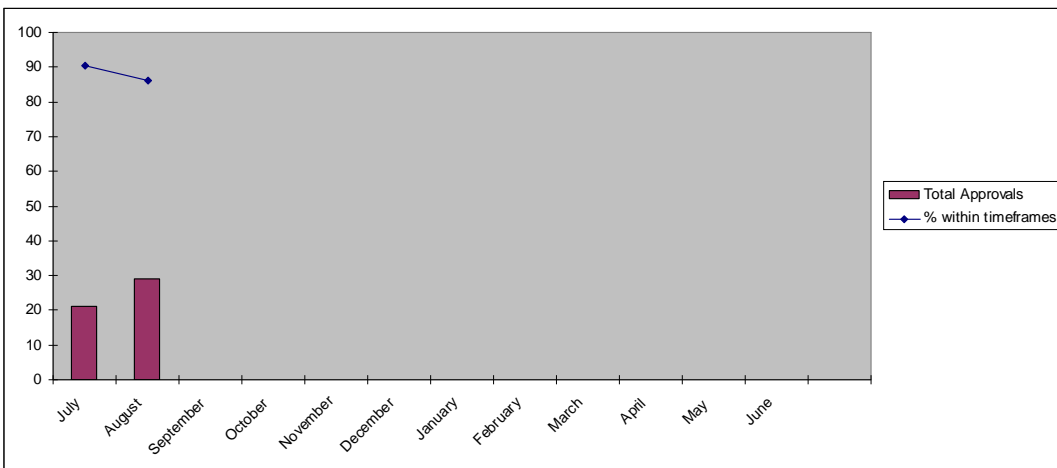
PLANNING APPLICATION APPROVALS 2010-2012



PLANNING APPROVAL TIMEFRAMES



TOTAL APPROVALS & TIMEFRAME %



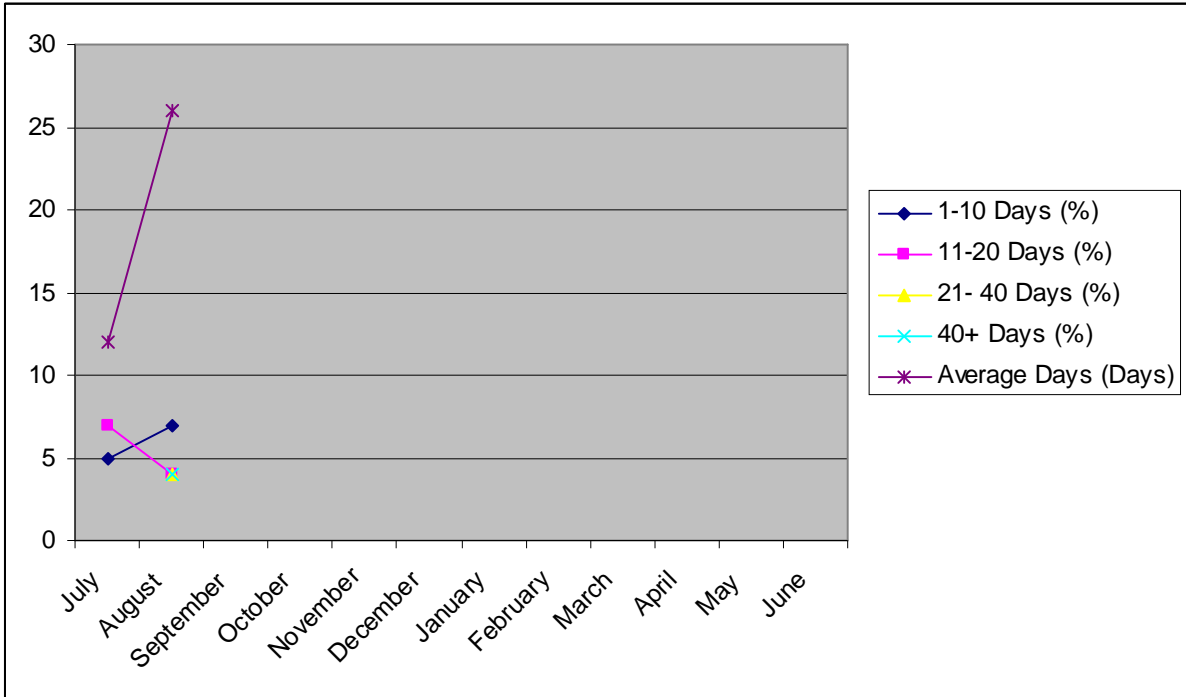
OPERATIONAL WORKS - NEW APPLICATIONS LODGED - August 2012

| Application No. | Development | Location | Date Lodged |
|------------------------|---|---|--------------------|
| OPW/346/2012 | Stormwater & Earthworks | 30 Reid Road, YARWUN QLD 4694 | 2/8/2012 |
| OPW/347/2012 | Earthworks | 1 Christian Court, GLEN EDEN QLD 4680 | 3/8/2012 |
| OPW/348/2012 | Sewerage Infrastructure | 17 Victoria Avenue, GLEN EDEN QLD 4680 | 6/8/2012 |
| OPW/349/2012 | Drainage Works, Earthworks, Landscaping, Signage & Driveway. | 20-22 Flinders Street, WEST GLADSTONE QLD 4680 | 9/8/2012 |
| OPW/350/2012 | Roadworks, stormwater, water infrastructure & earthworks. | 58 Goonoon Street, GLADSTONE QLD 4680 | 9/8/2012 |
| OPW/351/2012 | Landscaping | Lot 800 SP 231566, Central Avenue, CALLIOPE QLD 4680 | 10/8/2012 |
| OPW/353/2012 | Roadworks, Stormwater, Water Infrastructure, Drainage Works, Earthworks, Sewerage Infrastructure & Signage. | Lot 508 SP 247064, Kirkwood Road, NEW AUCKLAND QLD 4680 | 10/8/2012 |
| OPW/354/2012 | Stormwater, water infrastructure, sewerage infrastructure & landscaping. | 1 The Promenade, AGNES WATER QLD 4677 | 16/8/2012 |
| OPW/355/2012 | Landscaping | 9 Wuruma Court, CLINTON QLD 4680 | 20/8/2012 |
| OPW/356/2012 | Stormwater, water infrastructure, earthworks, sewerage infrastructure & landscaping. | 261 Auckland Street, SOUTH GLADSTONE QLD 4680 | 21/8/2012 |
| OPW/357/2012 | Road Works and Stormwater | 14 Ambrose Lane, BEECHER QLD 4680 | 22/8/2012 |
| OPW/358/2012 | Stormwater & Earthworks | 30 Reid Road, YARWUN QLD 4694 | 24/8/2012 |
| OPW/359/2012 | Landscaping | Lot 904 SP 246177, Dixon Drive, NEW AUCKLAND QLD 4680 | 28/8/2012 |
| OPW/360/2012 | Road Works, Stormwater, Water Infrastructure, Drainage Works, Earthworks, Sewerage Infrastructure and Signage | Lot 508 SP 247064, Kirkwood Road, NEW AUCKLAND QLD 4680 | 28/8/2012 |
| OPW/361/2012 | Road Works, Stormwater, Water Infrastructure, Drainage Works, Earthworks, Sewerage Infrastructure and Signage | Lot 508 SP 247064, Kirkwood Road, NEW AUCKLAND QLD 4680 | 28/8/2012 |

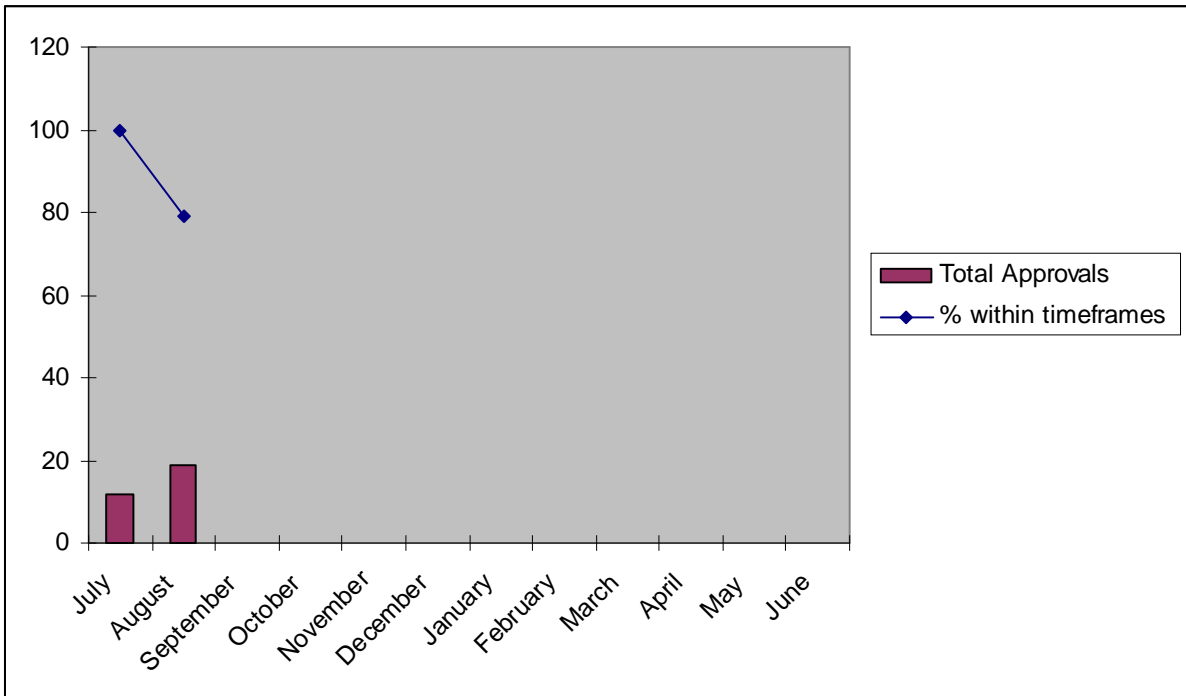
OPERATIONAL WORKS - DELEGATED DECISIONS - August 2012

| Application No. | Development | Location | Decision Date |
|------------------------|--|--|----------------------|
| OPW/254/2012 | Road works, stormwater, drainage works, earthworks, sewerage infrastructure & landscaping. | 52 Oaka Lane GLADSTONE QLD 4680 | 21/8/2012 |
| OPW/265/2012 | Road Works, Stormwater, Water Infrastructure, Drainage Works, Earthworks, Sewerage Infrastructure, Signage and Clearing Vegetation Under The Planning Scheme | Lot 950 SP 246171, Kirkwood Road KIRKWOOD QLD 4680 | 28/8/2012 |
| OPW/228/2011 | Roadworks, Stormwater, Drainage Works, Earthworks, Signage, Clearing Vegetation, Water & Sewerage Infrastructure | 42 Walker Drive CALLIOPE QLD 4680 | 14/8/2012 |
| OPW/279/2012 | Stormwater & Landscaping | 12 Leonard Street SOUTH GLADSTONE QLD 4680 | 27/8/2012 |
| OPW/275/2012 | Landscaping | 11 John Dory Drive TOOLOOA QLD 4680 | 1/8/2012 |
| OPW/340/2012 | Landscaping | Lot 901 SP 221484, Little Creek Boulevard KIRKWOOD QLD 4680 | 22/8/2012 |
| OPW/290/2012 | Road Works, Drainage Works and Earthworks | 104-106 Central Lane, GLADSTONE QLD 4680 | 3/8/2012 |
| OPW/321/2012 | Road Works, Stormwater, Earthworks, Sewerage Infrastructure and Landscaping. | 100 Glenlyon Street GLADSTONE QLD 4680 | 3/8/2012 |
| OPW/260/2012 | Roadworks, Stormwater, Water Infrastructure, Drainage Works & Sewerage Infrastructure. | Lot 904 SP 246177, Dixon Drive NEW AUCKLAND QLD 4680 | 23/8/2012 |
| OPW/220/2011 | Roadworks, Stormwater, Drainage Works, Earthworks, Signage, Water & Sewer Infrastructure | Lot 101 RP 836843, Tarrawonga Drive CALLIOPE QLD 4680 | 6/8/2012 |
| OPW/253/2012 | Roadworks, drainage works, stormwater, earthworks, signage, water infrastructure, sewerage infrastructure. | Lot 101 RP 836843, Tarrawonga Drive CALLIOPE QLD 4680 | 30/8/2012 |
| OPW/337/2012 | Landscaping | Lot 101 RP 836843, Tarrawonga Drive CALLIOPE QLD 4680 | 30/8/2012 |
| OPW/338/2012 | Drainage & Earthworks | 79 Goonoon Street GLADSTONE QLD 4680 | 9/8/2012 |
| OPW/283/2012 | Road Works, Stormwater, Water Infrastructure, Drainage Works, Sewerage Infrastructure and Other | 60 Findling Road BOYNE ISLAND QLD 4680 | 27/8/2012 |
| OPW/311/2012 | Sewerage Infrastructure and Prescribed Tidal Works | 60 Findling Road BOYNE ISLAND QLD 4680 | 28/8/2012 |

OPERATIONAL WORKS APPROVAL TIMEFRAMES

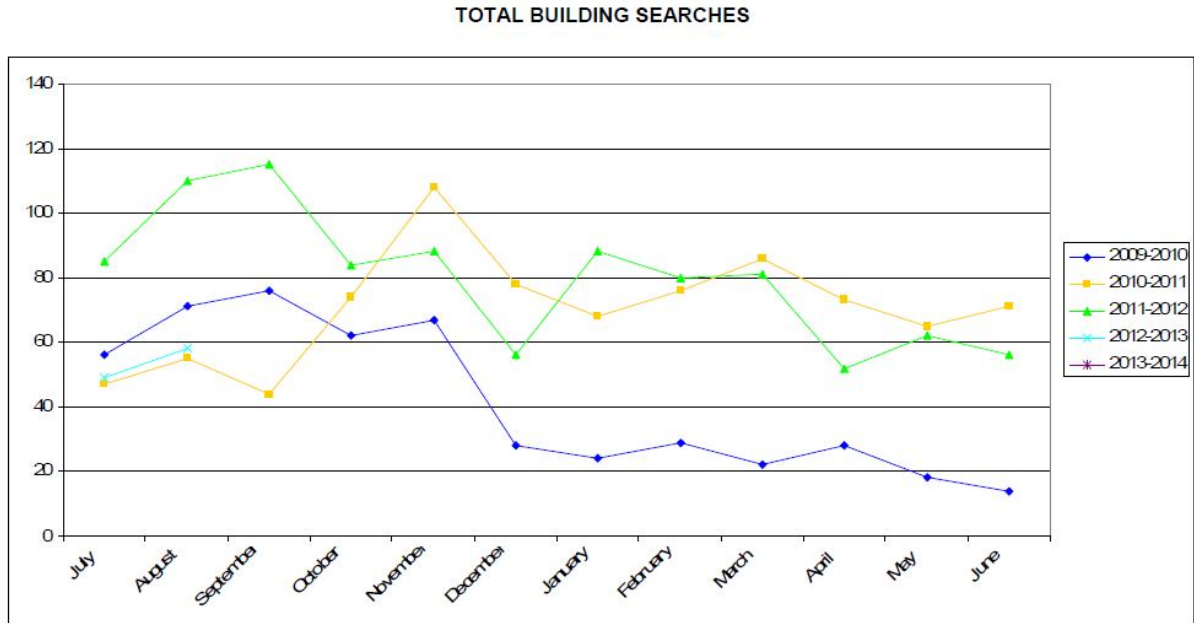


TOTAL APPROVALS & TIMEFRAME %

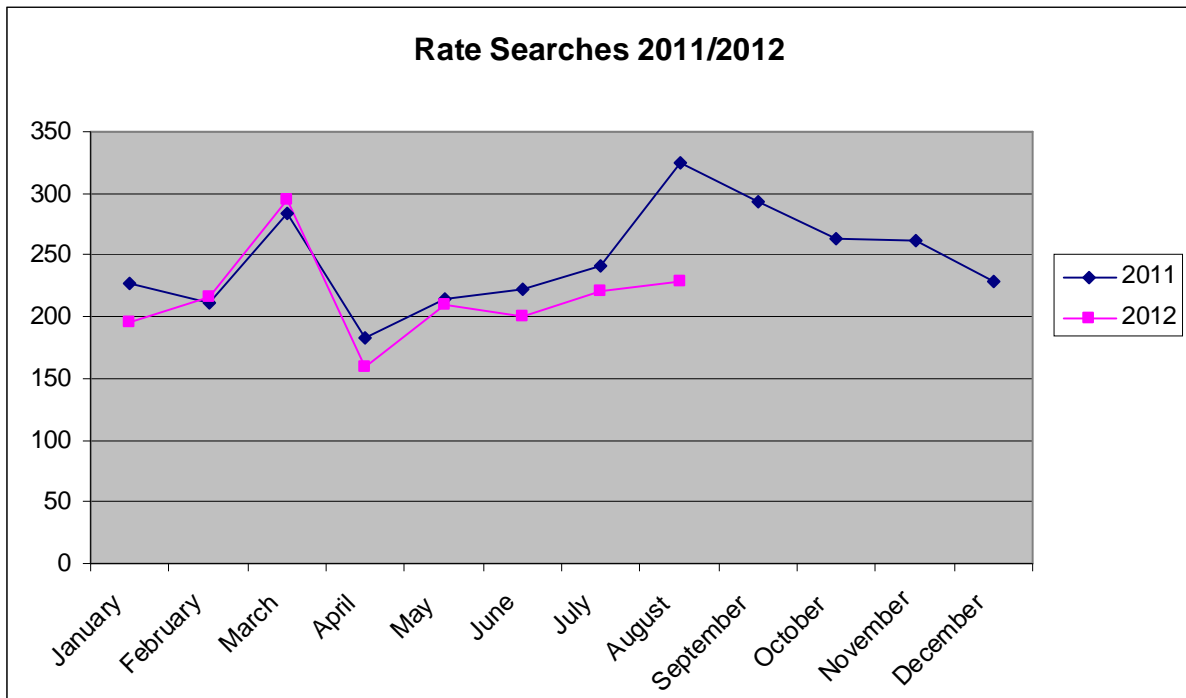


BUILDING SECTION STATISTICS

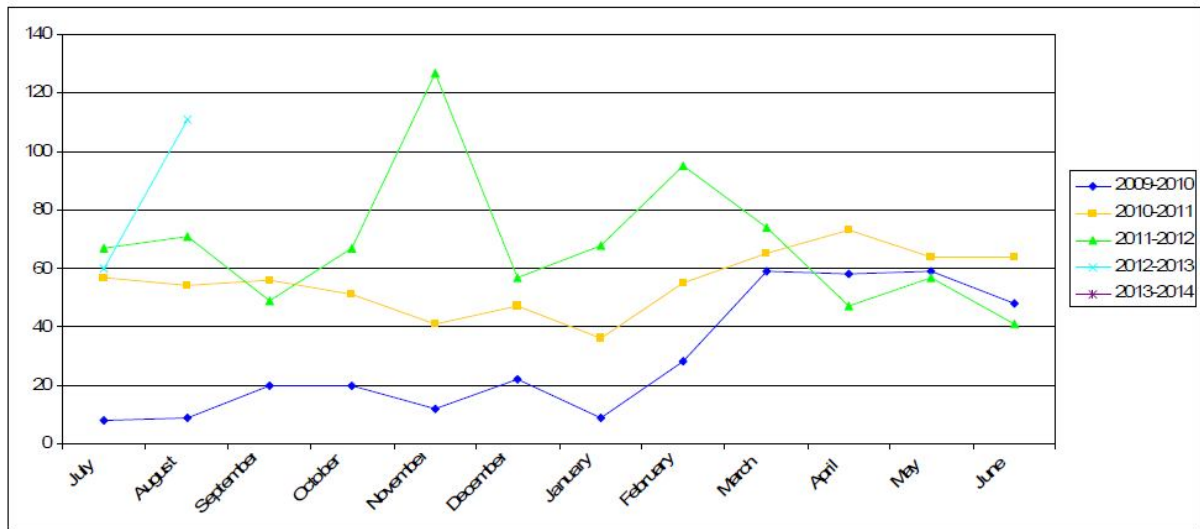
BUILDING SEARCHES CONDUCTED 2009-2012



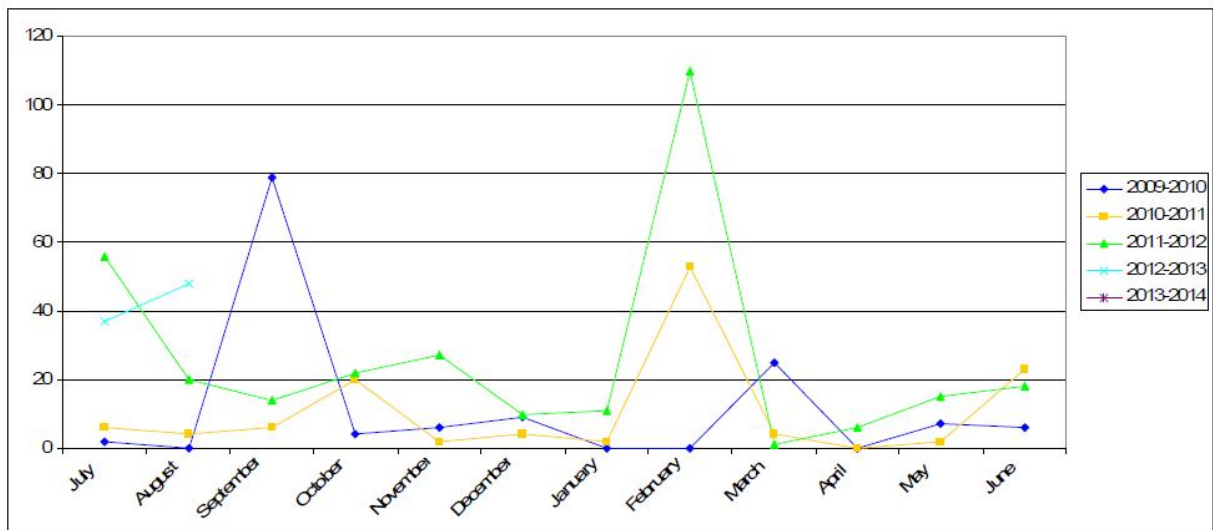
RATES SEARCHES 2011/2012



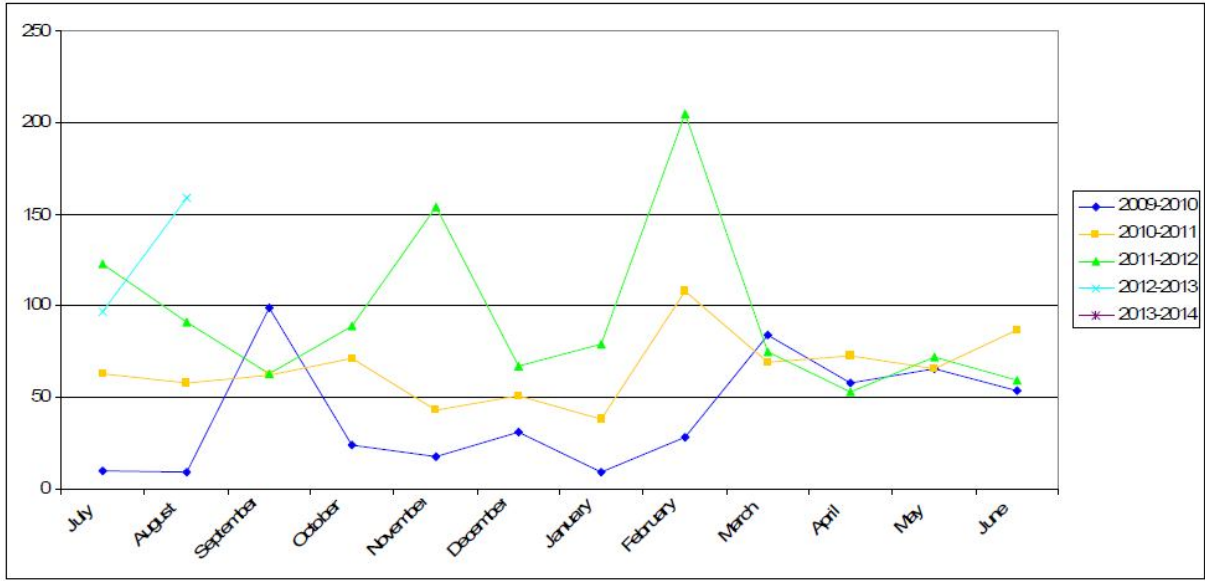
TOTAL DWELLING APPROVALS



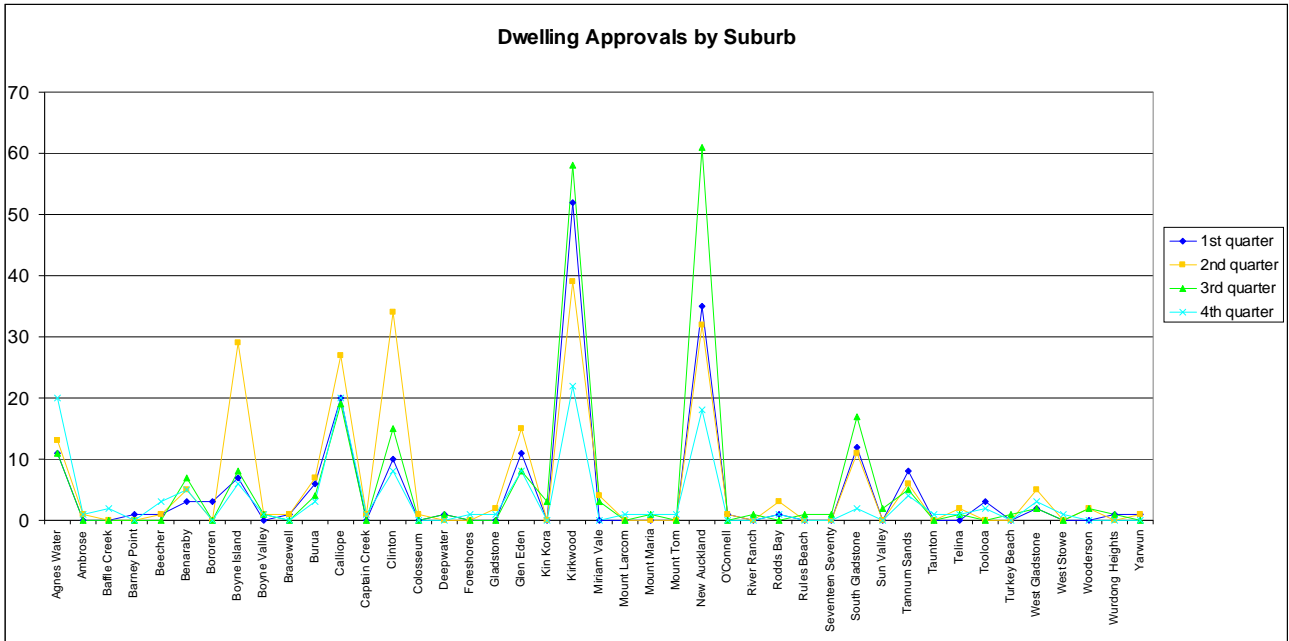
TOTAL UNIT/DUPLEX APPROVALS (NO. OF UNITS)



TOTAL HOUSING UNIT APPROVALS (DWELLING, DUPLEX, UNITS)

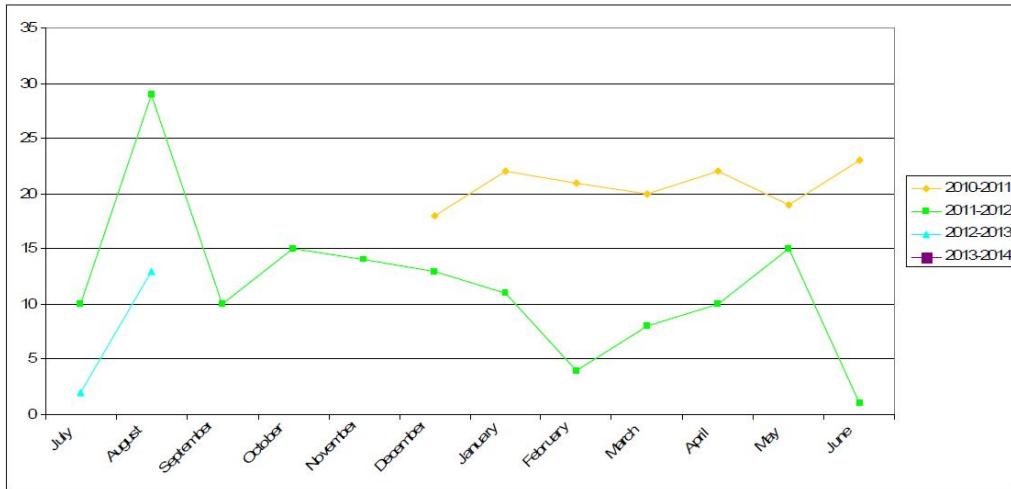


Dwelling Approvals by Suburb



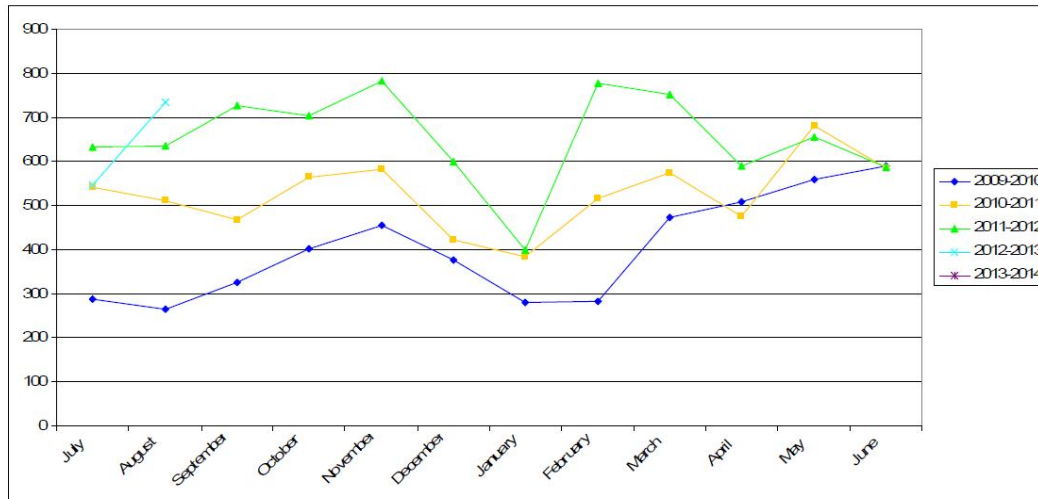
BUILDING & PLUMBING – POOL SAFETY CERTIFICATES ISSUED

POOL SAFETY CERTIFICATES ISSUED

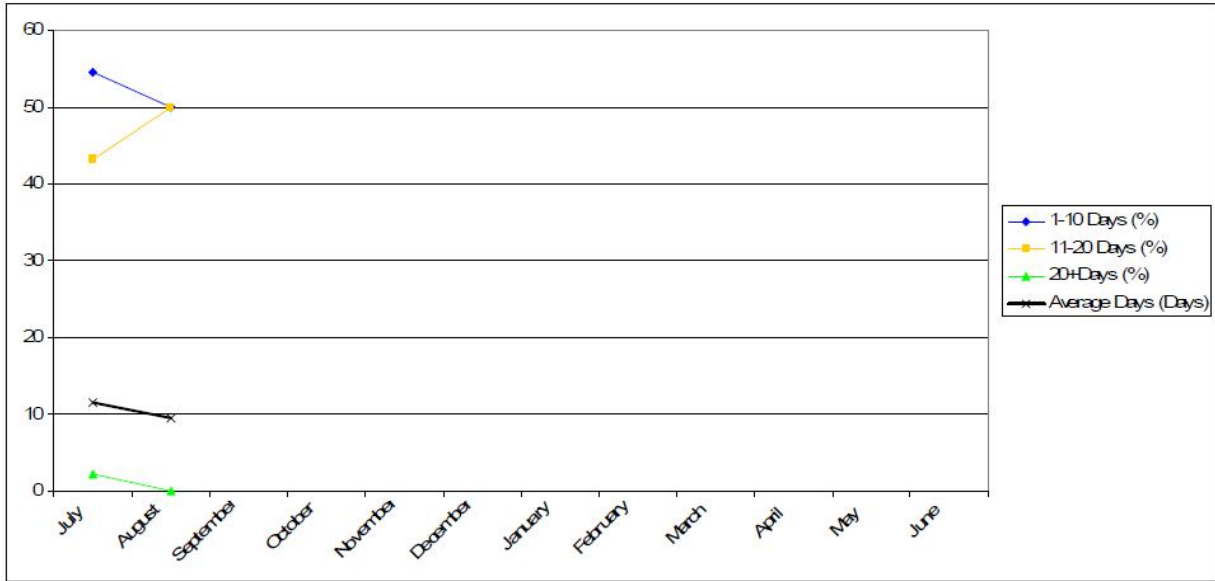


BUILDING & PLUMBING – BUILDING & PLUMBING INSPECTIONS

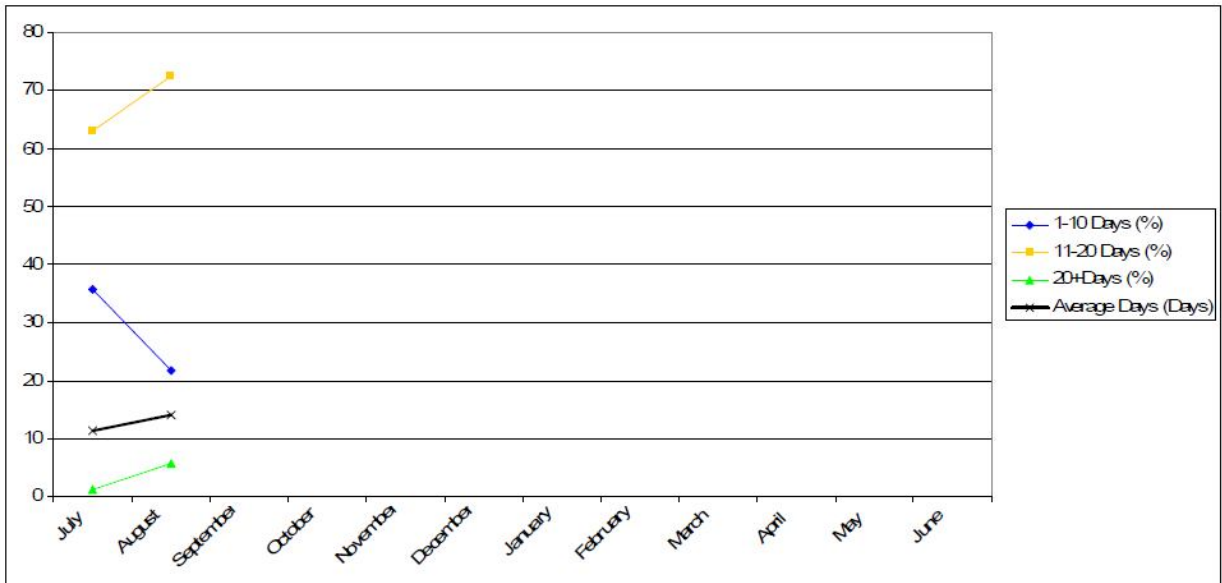
INSPECTIONS CONDUCTED BY BUILDING & PLUMBING OFFICERS



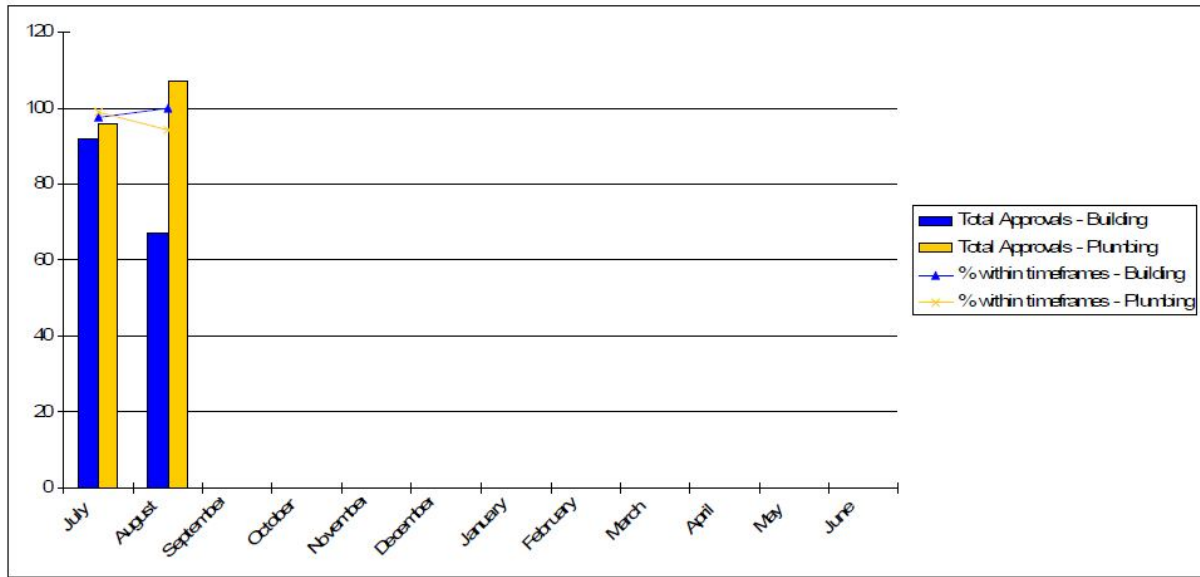
BUILDING APPROVAL TIMES – FROM 1 JULY 2012



PLUMBING APPROVAL TIMES – FROM 1 JULY 2012



BUILDING & PLUMBING APPROVALS – WITHIN REGULATORY TIMEFRAMES – FROM 1 JULY 2012



Jodie Clow
Technical Officer - Planning
6 September 2012