



Development Services

DEVELOPMENT STATISTICS - JULY 2011

The information below is provided to Councillors for the month of July 2011 in the following areas:-

- New planning applications lodged
- Delegated planning approvals
- Council planning approvals
- Delegated operational works approvals
- Graph showing Building Searches completed for 2011
- Graph showing Rate Searches completed 2010/2011
- Graph showing New Dwelling Approval Comparison for 2010/2011
- Graph showing New Dwelling Approvals 2002-2011
- Graph showing New Dwelling Approvals 2011 broken down into LG area.

PLANNING - NEW APPLICATIONS LODGED - JULY 2011

Application No.	Development	Location	Date Lodged
DA/389/2011	Duplex	26 Beaver Avenue, South Gladstone	29/07/2011
DA/388/2011	Multiple Unit Residential (43 units) & existing dwelling	1 Collins Lane, Kin Kora	27/07/2011
DA/387/2011	Industrial Subdivision (1 lot into 10)	47 Bensted Road, Callemondah	27/07/2011
DA/386/2011	Offices (Ground Floor)	143 Auckland Street, Gladstone	25/07/2011
DA/385/2011	Multiple Unit Residential (38 units)	2 Beezley Street, Glen Eden	22/07/2011
DA/384/2011	RaL - 1 into 313 plus 2 parks & Balance Lot (Elliot's Run - Stages 2-9)	Arthur Hulme Way, Calliope	20/07/2011
DA/383/2011	Duplex	7 Lawson Court, Glen Eden	14/07/2011

Application No.	Development	Location	Date Lodged
DA/382/2011	Multiple Unit Residential (20 units)	38 Kent Street, West Gladstone	11/07/2011
DA/380/2011	Multiple Unit Residential (5 units)	6 Ormonde Street, West Gladstone	08/07/2011
DA/379/2011	1 lot into 16 lots (Stage 20) - Little Creek Estate	Kirkwood Road, Kirkwood	08/07/2011
DA/377/2011	Workers Accommodation (Stage 2) - 1152 units	101 Calliope River Road, West Stowe	07/07/2011
DA/376/2011	Extension & Upgrade to Sewerage Treatment Plant - Public Utility (Major)	Lot 21 Yabby Road, Round Hill	07/07/2011
DA/375/2011	Boundary Realignment (2 into 2)	26 Bell Street, Barney Point	07/07/2011
DA/378/2011	MCU Small Lot Housing & Reconfiguring a Lot - 1 lot into 2	3 Brando Lane, West Gladstone	06/07/2011
DA/360/2011	MCU Small Lot Housing & Reconfiguring a Lot - 1 lot into 2	1 Brando Lane, West Gladstone	05/07/2011
DA/373/2011	Boundary Realignment (2 into 2)	35 Agnes Street, South Gladstone	04/07/2011
DA/372/2011	Office (Arrow LNG)	55 Goondoon Street, Gladstone	04/07/2011
DA/374/2011	Office (Ozcare)	Lot 10 Breslin Street, West Gladstone	01/07/2011
DA/369/2011	Sport & Recreation (Aquatic Centre)	Lot 1 Jacaranda Drive, Boyne Island	01/07/2011
DA/368/2011	Extractive Industry - Increase in Scale of Existing Extractive Industry (Boral)	168 Silica Road, Tannum Sands	01/07/2011
DA/367/2011	Multiple Unit Residential (8 units)	25 Rossella Street, West Gladstone	01/07/2011
DA/366/2011	Boundary Realignment (3 into 3)	174 Leferink Road, Benaraby	01/07/2011
DA/365/2011	Duplex	7 Centaurus Close, Telina	01/07/2011
DA/364/2011	Multiple Unit Residential (6 units)	2 View Street, West Gladstone	01/07/2011
DA/363/2011	Local Industry (5 tenancy industrial complex)	8 Helen Street, Clinton	01/07/2011

PLANNING - DELEGATED DECISIONS - JULY 2011

Application No.	Development	Location	Decision Date
DA/44705/2009	RaL (1 into 8 standard format freehold lots)	16 Orton Court, Seventeen Seventy	29/07/2011 - Amended
DA/67/2009	2 lots into 14 lots (Beecher Estates Stage 10B)	Jim Whyte Way, Beecher	07/07/2011 - Modified
DA/68/2009	3 lots into 7 lots (Beecher Estates Stage 10C)	Jim Whyte Way, Beecher	08/07/2011 - Negotiated
DA/215/2010	Restaurant and Takeaway Food Outlet (McDonalds)	31-39 Glenlyon Street, Gladstone	07/07/2011 - Negotiated

Application No.	Development	Location	Decision Date
DA/273/2011	RaL - 1 lot into 2 lots	65 Broadacres Drive, Tannum Sands	18/07/2011
DA/308/2011	RaL - 1 lot into 2 lots	Kirkwood Road, New Auckland	01/07/2011
DA/316/2011	Display Village (8 Display Homes)	46-52 & 63-67 Koowin Drive, Kirkwood	14/07/2011
DA/321/2011	PTW - Carrying out work in a Coastal Management District & Damaging Marine Plants (reclamation of tidal inundation area, provision of rock wall armouring, construction of sediment ponds and outfalls) - APLNG	Curtis Island	18/07/2011
DA/324/2011	Duplex	24 Hawkesbury Road, Calliope	25/07/2011
DA/325/2011	RaL - 1 lot into 18 & Balance Lot (Oaks Estate Stage 6)	Lot 8 The Oaks Road, Tannum Sands	27/07/2011
DA/355/2011	PTW - Temporary Reverse Osmosis, Sewerage Treatment Plant and Sea Water Intake and Outfall Infrastructure (QCLNG)	Curtis Island	25/07/2011

PLANNING - COUNCIL DECISION - JULY 2011

Application No.	Development	Location	Decision Date
DA/20648/2008	PA Overriding the Planning Scheme - 220 Dwellings & Commercial Land Use & RaL 1 into 225 under community management scheme & ERA.	53785 Bruce Highway, Mount Larcom	19/07/2011
DA/209/2010	PA - Tannum Pub Redevelopment	Pacific Avenue, Tannum Sands	05/07/2011
DA/229/2010	Medical Centre (GP Super Clinic)	Philip Street, Kin Kora	05/07/2011
DA/284/2011	Tourist Facility (Quad Bikes)	Quarry Road, Round Hill	05/07/2011
DA/296/2011	Multiple Unit Residential (4 units)	57 Toolooa Street, South Gladstone	05/07/2011
DA/301/2011	Extension of Existing Premises (Hotel)	264 Coast Road, Baffle Creek	19/07/2011
DA/315/2011	Multiple Unit Residential (4 units)	230 Auckland Street, South Gladstone	19/07/2011
DA/322/2011	Telecommunications Facility	68 Wyndham Road, Beecher	19/07/2011 - Refused

OPERATIONAL WORKS - NEW APPLICATIONS LODGED - JULY 2011

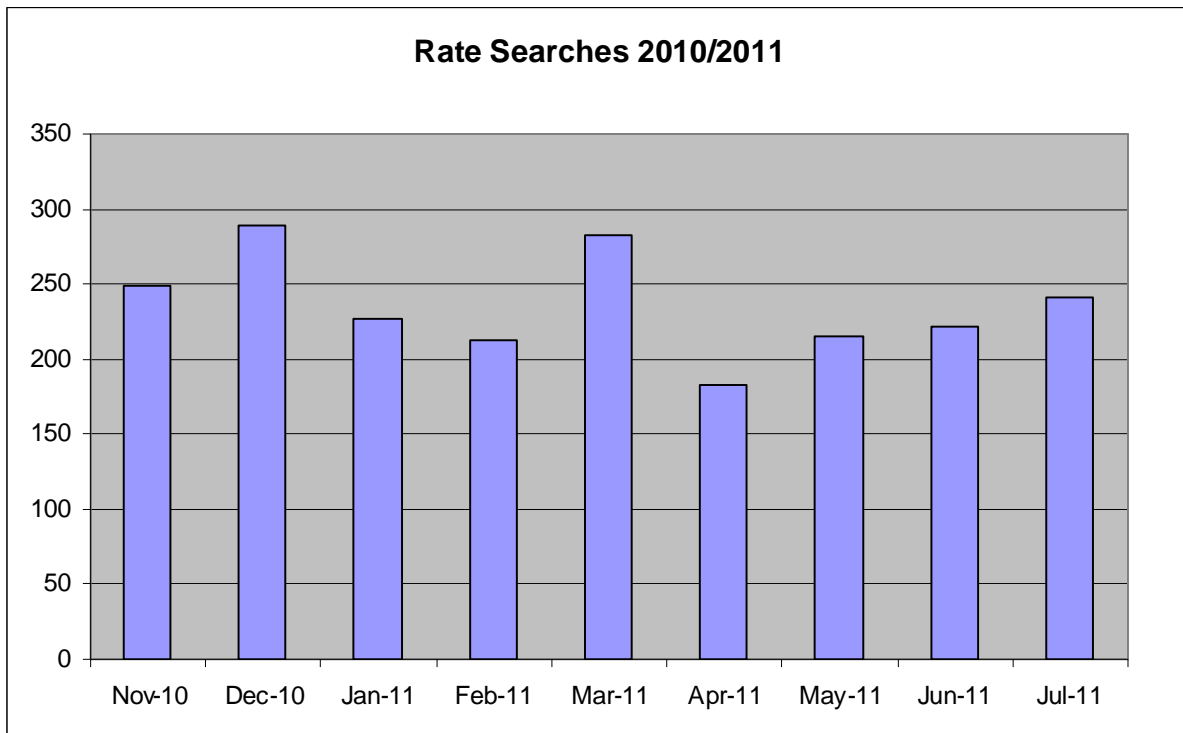
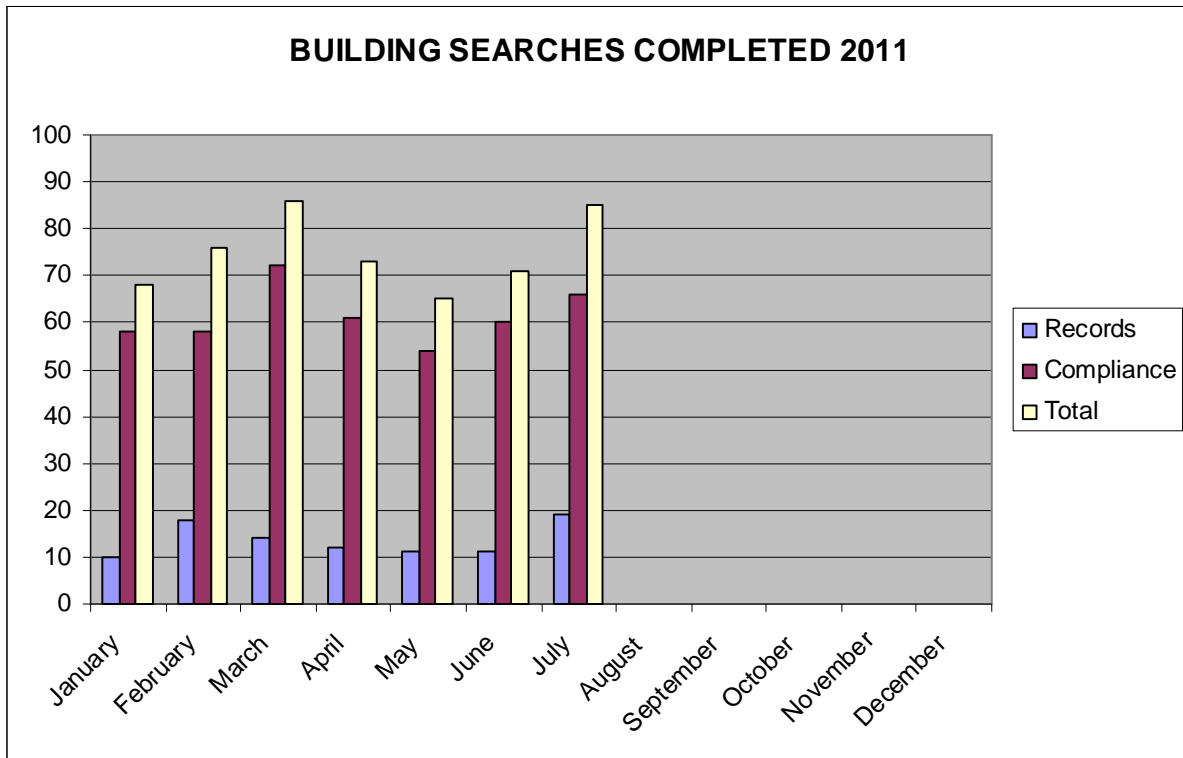
Application No.	Development	Location	Date Lodged
OPW/169/2011	External Works, Roadworks, Stormwater, Drainage Works, Earthworks, Signage, Clearing Vegetation & Water (2 nd intersection Kirkwood Road - Little Creek Estate)	Lot 902 Kirkwood Road, Kirkwood	28/07/2011
OPW/168/2011	Roadworks, Stormwater, Landscaping, Signage, Water & Sewerage Infrastructure (GP Super Clinic)	Philip Street, Kin Kora	28/07/2011
OPW/167/2011	Roadworks, Stormwater, Drainage Works, Earthworks, Signage, Clearing Vegetation, Water & Sewerage Infrastructure (Little Creek Estate Stage 13)	Kirkwood Road, Kirkwood	27/07/2011
OPW/165/2011	Earthworks (Dwelling)	27 Agnes Street, South Gladstone	21/07/2011
OPW/164/2011	Earthworks (Dwelling)	6 Kroombit Terrace, New Auckland	20/07/2011
OPW/163/2011	Earthworks (Dwelling)	4 Kroombit Terrace, New Auckland	20/07/2011
OPW/162/2011	Roadworks, Drainage Works, Earthworks, Sewerage Infrastructure & Carpark (Yaralla Sports Club Extension)	26 Bell Street, Barney Point	19/07/2011
OPW/161/2011	Landscaping (10 units)	11 Glenlyon Street, Gladstone	19/07/2011
OPW/166/2011	Roadworks, Stormwater, Water Infrastructure, Drainage Works, Sewerage Infrastructure, Signage & Clearing Vegetation (Stage 12 Little Creek Estate)	Kirkwood Road, Kirkwood	15/07/2011
OPW/160/2011	Operational Works (Beecher Estate Stage 6)	261 Jim Whyte Way, Beecher	13/07/2011
OPW/159/2011	Roadworks, Stormwater, Drainage Works, Earthworks, Water & Sewerage Infrastructure (Calliope Chase Stage 11A & 11B)	Central Avenue, Calliope	05/07/2011
OPW/158/2011	Roadworks, Stormwater, Drainage Works & Earthworks (Fishermans Landing Northern Expansion)	Serrant Road, Yarwun	05/07/2011
OPW/157/2011	Stormwater (Dan Murphy's Bottle Shop)	Lot 1 Harvey Road, Clinton	05/07/2011

Application No.	Development	Location	Date Lodged
OPW/156/2011	Roadworks, Stormwater, Drainage Works, Earthworks, Landscaping, Signage, Clearing Vegetation, Water & Sewerage Infrastructure (Stage 8 Little Creek Estate)	Kirkwood Road, Kirkwood	01/07/2011
OPW/155/2011	Landscaping (Stage 8 Little Creek Estate)	Kirkwood Road, Kirkwood	01/07/2011

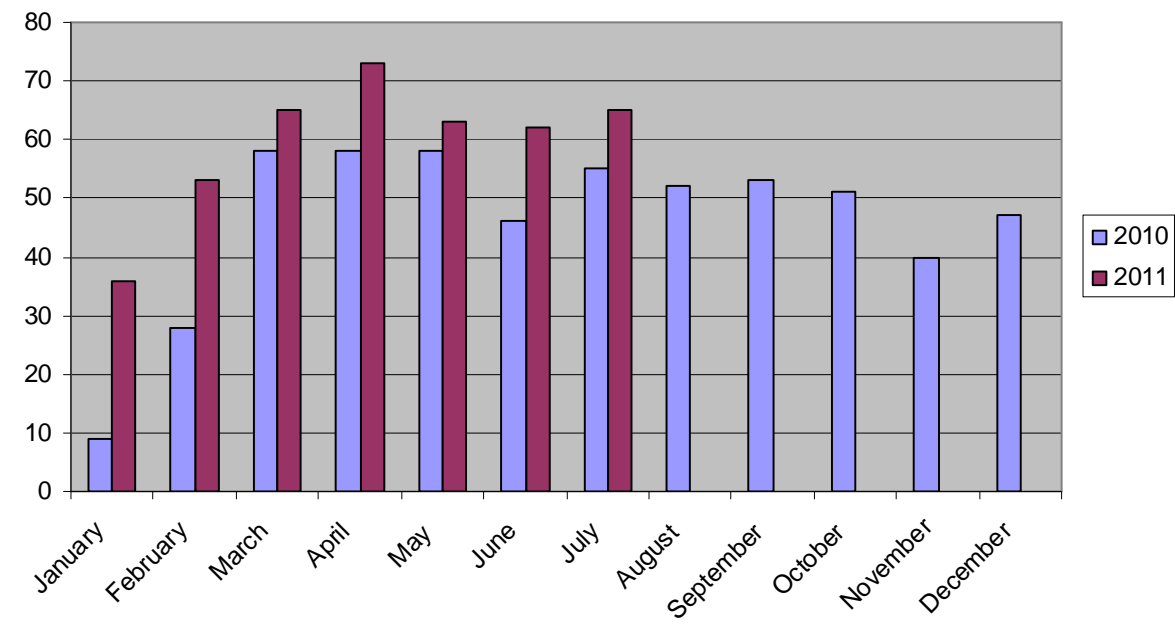
OPERATIONAL WORKS - DELEGATED DECISIONS - JULY 2011

Application No.	Development	Location	Decision Date
OPW/20558/2007	Earthworks, Stormwater, Roadworks & Water Infrastructure (18 rural residential lots)	114 Lorna Crescent, Beecher	15/07/2011 (modified)
OPW/74/2010	Road Upgrade/Link Road	435 Brendonna Road, Burua	15/07/2011
OPW/121/2011	Stormwater, Water & Sewerage Infrastructure (2 lots)	15 Sanctuary Place, South Gladstone	12/07/2011
OPW/124/2011	Roadworks, Earthworks, Landscaping & Water Infrastructure (Beecher Estate Stage 10B)	396 Jim Whyte Way, Beecher	05/07/2011
OPW/125/2011	Stormwater & Earthworks (7 units)	1 Cavella Drive, Glen Eden	22/07/2011
OPW/134/2011	Roadworks, Drainage Works, Water & Sewerage Infrastructure (2 lots)	1 Dorado Court, Telina	14/07/2011
OPW/142/2011	Roadworks, Stormwater, Drainage Works, Earthworks, Water & Sewerage Infrastructure (2 lots)	22 Jeana Close, Boyne Island	14/07/2011
OPW/143/2011	Earthworks & Clearing Vegetation (43 lots)	2 Lorikeet Avenue, New Auckland	14/07/2011
OPW/146/2011	Roadworks, Stormwater & Sewerage Infrastructure (Offices & Retail)	165 Auckland Street, Gladstone	05/07/2011
OPW/148/2011	Drainage Works & Sewerage Infrastructure (20 Units)	9-11 Kent Street, West Gladstone	12/07/2011
OPW/156/2011	Roadworks, Stormwater, Drainage Works, Earthworks, Landscaping, Signage, Clearing Vegetation, Water & Sewerage Infrastructure (Stage 8 Little Creek Estate)	Kirkwood Road, Kirkwood	20/07/2011

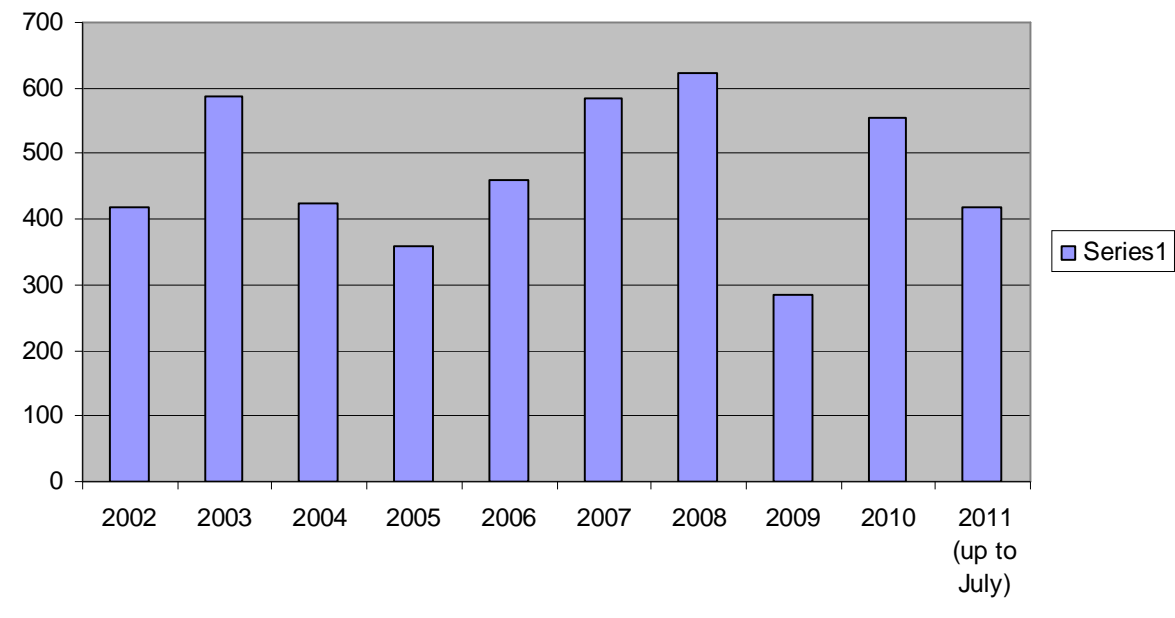
BUILDING SECTION STATISTICS



NEW DWELLING COMPARISON 2010/2011



Dwelling Approvals



New Dwelling Approvals by Area

