



Development Services

1/2013

Subject: DEVELOPMENT STATISTICS – DECEMBER 2012

File Reference: DB10.2

The information below is provided for the month of November 2012 in the following areas:-

- New planning applications lodged
- Delegated planning approvals
- Council planning approvals
- Graph Showing Planning Lodgements & Approvals
- New operational works applications lodged
- Delegated Operational works approvals
- Graph Showing Operational Works Lodgements & Approvals
- Graph showing Building Searches completed for 2009-2012
- Graph showing Rate Searches completed 2010/2011/2012
- Graph showing New Dwelling Approval Comparison for 2009-2012
- Graph showing New Dwelling Approvals broken down into LG area.
- Graph showing Pool Safety Certificates Issued
- Graph showing Building & Plumbing Inspections conducted

PLANNING - NEW APPLICATIONS LODGED – December 2012

Application No.	Development	Location	Date Lodged
DA/761/2012	Access Easement	40 Goonoon Street, GLADSTONE QLD 4680	3/12/2012
DA/762/2012	Extension to Child Care Centre & Reconfiguration of a Lot (2 into 3)	12 Uniting Place, TELINA QLD 4680	3/12/2012
DA/763/2012	6 Display Homes	Lot 60 SP 165461, Broadacres Drive, TANNUM SANDS QLD 4680	4/12/2012
DA/764/2012	14 Display Homes & Reconfiguration of a Lot (1 into 14)	19 Applin Place, TANNUM SANDS QLD 4680	4/12/2012
DA765/2012	Dog Boarding Kennels	356 Mount Larcom-Bracewell Road, MACHINE CREEK QLD 4680	5/12/2012
DA/766/2012	Fuel Depot	42 Bensted Road, CALLEMONDAH QLD 4680	6/12/2012
DA/767/2012	Reconfiguring a lot 1 into 2	15 Bensted Road, CALLEMONDAH QLD 4680	7/12/2012
DA/768/2012	Multiple Unit Residential (32 Units)	7-11 Fisher Street, WEST GLADSTONE QLD 4680	7/12/2012
DA/769/2012	Home Business	8 Chapman Street, WEST GLADSTONE QLD 4680	11/12/2012
DA/770/2012	Multiple Unit Residential	7 Ailsa Street, WEST	12/12/2012

	(10 Units)	GLADSTONE QLD 4680	
DA/771/2012	(1 into 3) & Access Easements B – C	2 Beezley Street, GLEN EDEN QLD 4680	12/12/2012
DA/772/2012	Duplex Unit	52 Fisher Street, WEST GLADSTONE QLD 4680	13/12/2012
DA/773/2012	Duplex Unit	9 Gumnut Place, KIRKWOOD QLD 4680	14/12/2012
DA/774/2012	Duplex Unit	15 Keeling Court, NEW AUCKLAND QLD 4680	17/12/2012
DA/775/2012	Extension of Shopping Centre	75 Dawson Highway, NEW AUCKLAND QLD 4680	17/12/2012
DA/776/2012	Extensions to Accommodation Building (6 Rooms)	Lot 1 SP120844, Captain Cook Drive, AGNES WATER QLD 4680	18/12/2012
DA/777/2012	Multiple Unit Residential (3 Units)	102 Off Lane, SOUTH GLADSTONE QLD 4680	18/12/2012
DA/778/2012	Multiple Unit Residential (10 Units in 4 Stages)	79 Central Lane, GLADSTONE QLD 4680 40 – 42 Bramston Street, GLADSTONE QLD 4680	19/12/2012
DA/779/2012	Contractor's Depot, Bulk Store and Caretaker's Residence	35-37 Gladstone-Benaraby Road, TOOLOOA QLD 4680	20/12/2012
DA/780/2012	Extractive Industry (Quarry), Reconfiguring a Lot (Boundary Realignment), Caretakers Residence and Workers Accommodation (4 Units) ERA 16 (2B and 3B) and 8 (3A)	4131 Dawson Highway, WOODERSON QLD 4680 4035 Dawson Highway, WOODERSON QLD 4680	21/12/2012
DA/781/2012	Multiple Unit Residential (11 Units)	60 Flinders Street, WEST GLADSTONE QLD 4680	24/12/2012

PLANNING - DELEGATED DECISIONS – December 2012

Application No.	Development	Location	Decision Date
DA/612/2012	Local Industry (Additional Workshop & Office)	3 Hixon Street, SOUTH GLADSTONE QLD 4680	21/12/2012
DA/709/2012	Extension to Indoor Entertainment Facility - Jetts Fitness Health Studio/Gymnasium	36 Far Street, WEST GLADSTONE QLD 4680	6/12/2012
DA/732/2012	Food Premises (Chinese Takeaway/Restaurant)	34 Tank Street, GLADSTONE QLD 4680	20/12/2012
DA/642/2012	Road Dedication and Balance Lot	19 Applin Place, TANNUM SANDS QLD 4680	18/12/2012
DA/718/2012	Reconfiguring a lot 1 into 2	43 Chamberlain Road, BURUA QLD 4680	20/12/2012

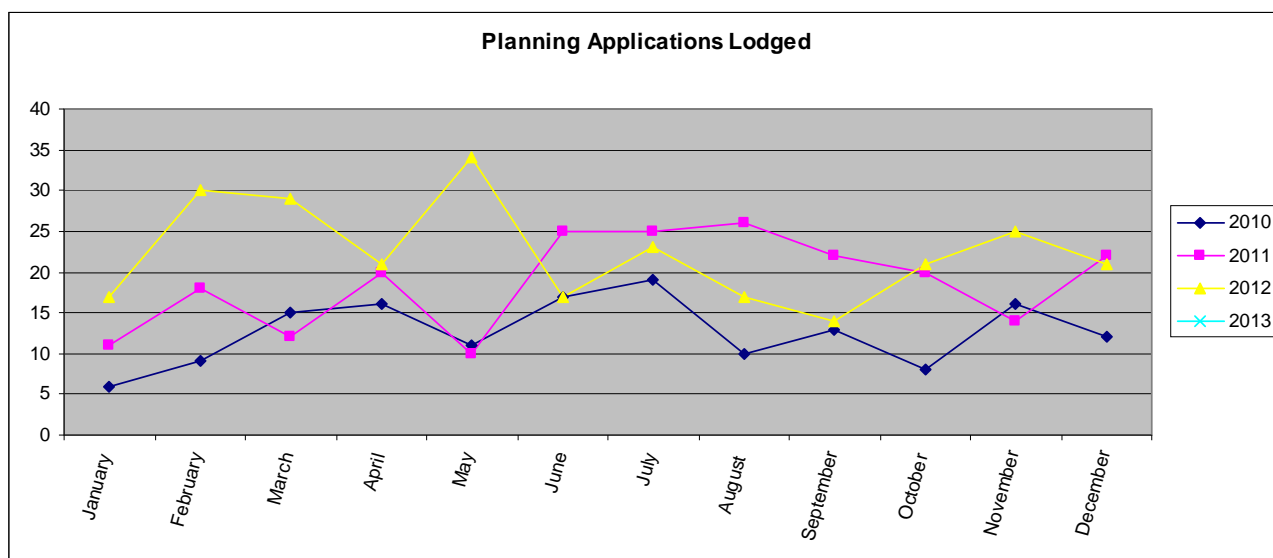
PLANNING – COUNCIL DECISIONS – December 2012

Application No.	Development	Location	Decision Date
DA/669/2012	Material Change of Use of Premises – Duplex Unit	14 Telopea Place, KIRKWOOD QLD 4680	18/12/2012
DA/516/2012	Material Change of Use of Premises – Small lot housing & Reconfiguring a lot 1 into 2	36 Perhouse Street, BARNEY POINT QLD 4680	18/12/2012
DA/710/2012	Material Change of Use of Premises – Commercial Premises (Legal Office)	6 Roseberry Street, GLADSTONE QLD 4680	18/12/2012
DA/706/2012	Material Change of Use of Premises – Duplex Unit	16 Boonderee Place, NEW AUCKLAND QLD 4680	18/12/2012
DA/549/2012	Material Change of Use of Premises – Food Premises (Business)	49-51 Yarroon Street, 26 Hanson Road & 31-37 Glenlyon Street, Gladstone	18/12/2012
DA/703/2012	Reconfiguring a Lot (2 into 4) Stage 10D Proposed Lot 457 & 711 SP252989	Lot 457 SP 239706, Jim Whyte Way, BURUA QLD 4680	1/12/2012

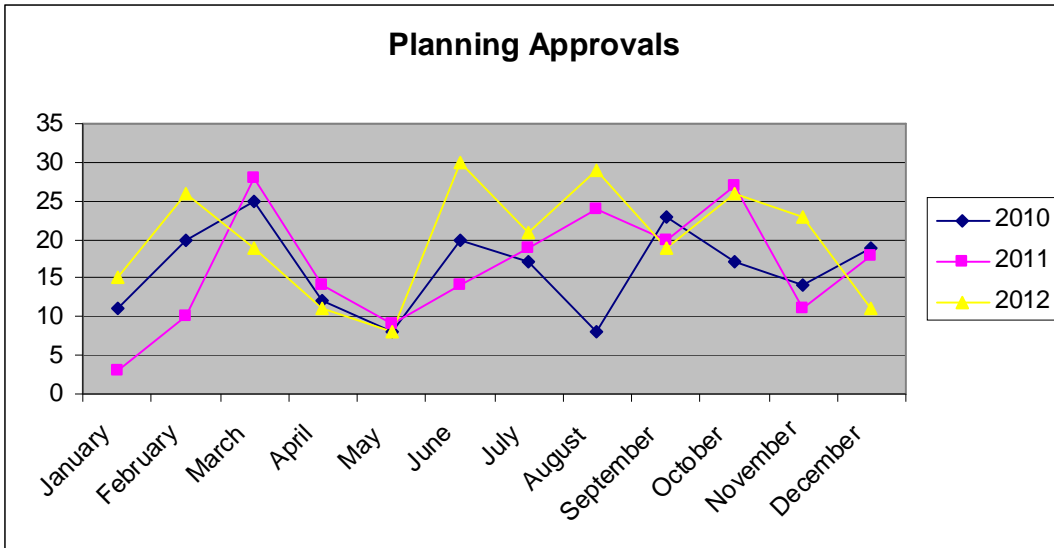
PLANNING – NEGOTIATED DECISIONS – December 2012

Application No.	Development	Location	Decision Date
DA/482/2011	Motel (52 Units)	8 Wenitong Street, WEST GLADSTONE QLD 4680	6/12/2012
DA/566/2012	Local Industry - Workshop Extensions & Improvements	42-44 Chapple Street, GLADSTONE QLD 4680	4/12/2012
DA/633/2012	Multiple Unit Residential (4 units)	2 Mylne Street, WEST GLADSTONE QLD 4680	19/12/2012
DA/491/2011	Reconfiguring a lot 1 into 4	40 Corfield Drive, AGNES WATER QLD 4677	21/12/2012

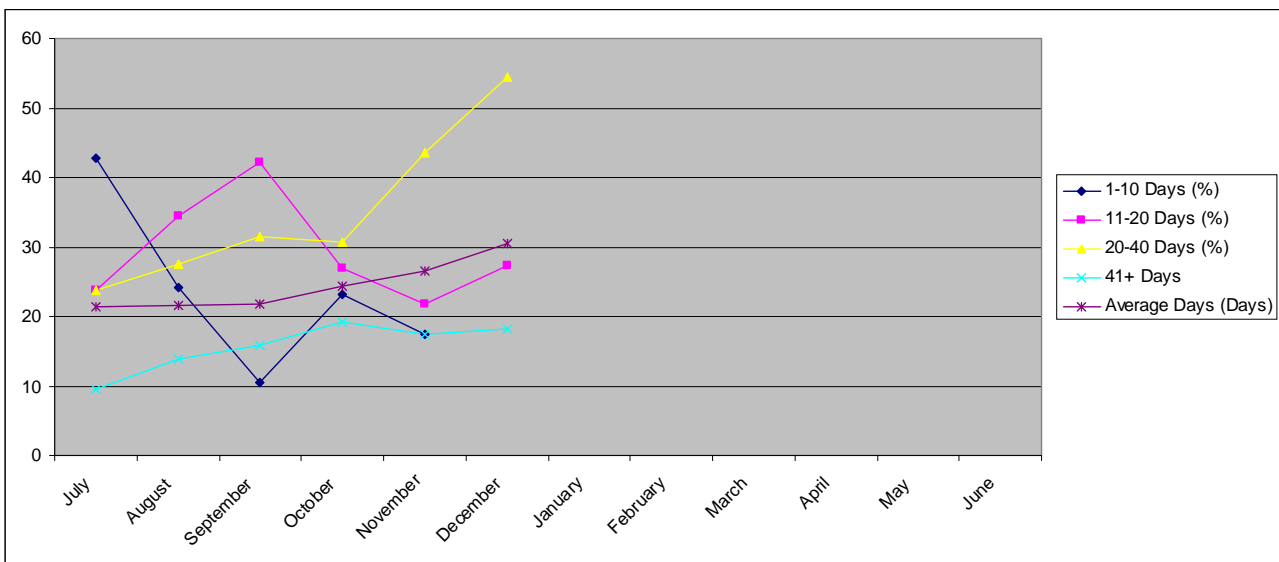
PLANNING APPLICATIONS LODGED 2010-2012



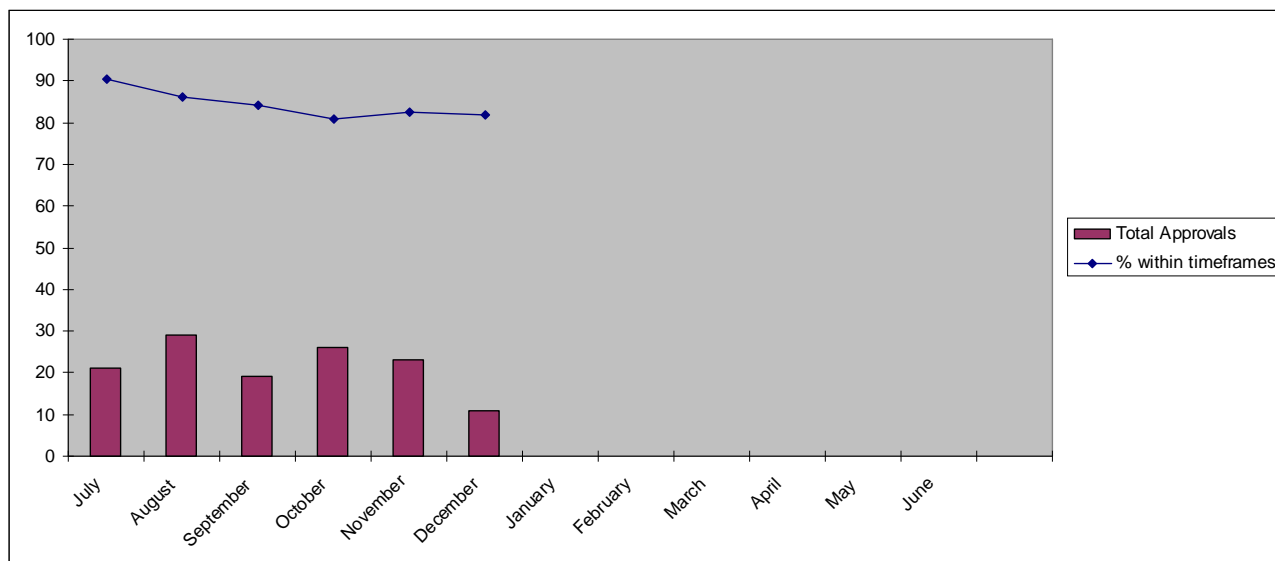
PLANNING APPLICATION APPROVALS 2010-2012



PLANNING APPROVAL TIMEFRAMES



TOTAL APPROVALS & TIMEFRAME %



OPERATIONAL WORKS - NEW APPLICATIONS LODGED - December 2012

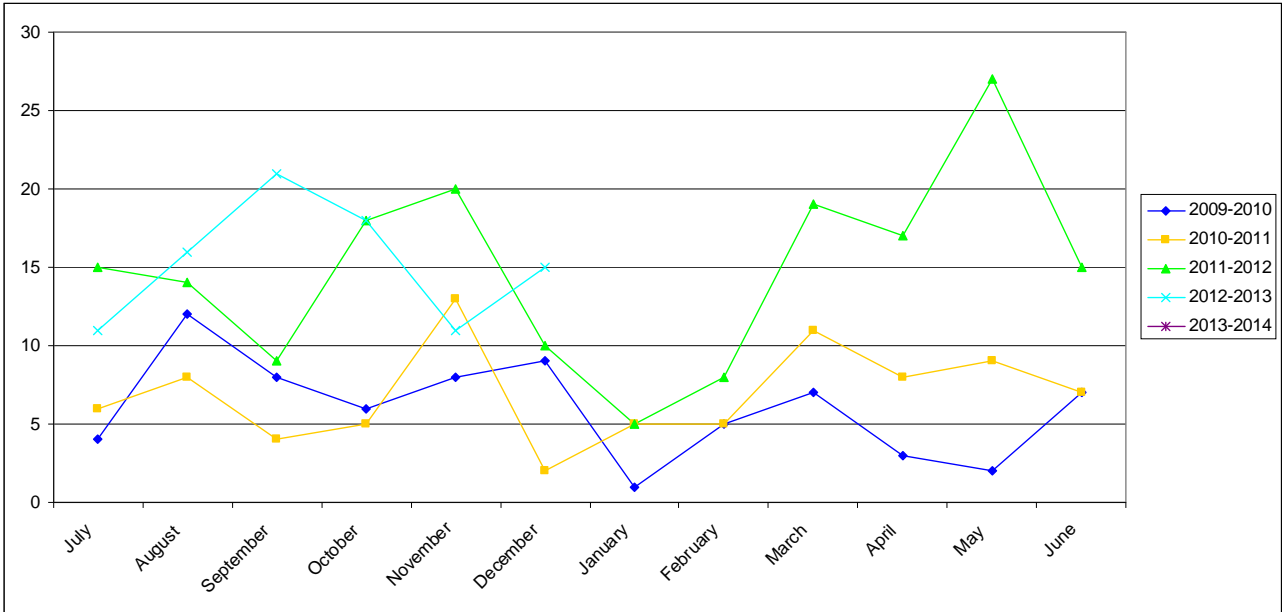
Application No.	Development	Location	Date Lodged
OPW/415/2012	Stormwater, Water Infrastructure & Sewerage Infrastructure	61 Ann Street, SOUTH GLADSTONE QLD 4680	4/12/2012
OPW/416/2012	Road Works, Stormwater, Water Infrastructure, Drainage Works, Sewerage Infrastructure	6 Little Street, SOUTH GLADSTONE QLD 4680	4/12/2012
OPW/417/2012	Road Works, Stormwater, Water Infrastructure, Drainage Works, Earthworks, Sewerage Infrastructure & Signage	Lot 508 SP 247064, Kirkwood Road, NEW AUCKLAND QLD 4680	17/12/2012
OPW/418/2012	Landscaping	Lot 508 SP 247064, Kirkwood Road, NEW AUCKLAND QLD 4680	17/12/2012
OPW/419/2012	Landscaping	Lot 508 SP 247064, Kirkwood Road, NEW AUCKLAND QLD 4680	17/12/2012
OPW/420/2012	Sewerage Infrastructure	550 Kirkwood Road, KIRKWOOD QLD 4680	17/12/2012
OPW/421/2012	Sewerage Infrastructure	Lot 907 SP 246178, Dixon Drive, NEW AUCKLAND QLD 4680 Lot 908 SP 246178, Dixon Drive, NEW AUCKLAND QLD 4680	17/12/2012
OPW/422/2012	Earthworks	Lot 200 CTN 2173, Blain Drive, WEST GLADSTONE QLD 4680	17/12/2012
OPW/423/2012	Roadworks, Stormwater, Water Infrastructure, Drainage Works,	Lot 2 SP 221743, Round Hill Road, AGNES WATER QLD 4677	17/12/2012

	Earthworks, Sewerage Infrastructure & Clearing Vegetation Under The Planning Scheme		
OPW/424/2012	Roadworks, Stormwater, Water Infrastructure and Drainage works	6 Wyndham Avenue, BOYNE ISLAND QLD 4680	18/12/2012
OPW/432/2012	Earthworks	Lot 904 SP 246177, Dixon Drive, NEW AUCKLAND QLD 4680 Lot 3 SP 188635, Kirkwood Road, KIRKWOOD	18/12/2012
OPW/434/2012	Landscaping	Lot 60 SP 165461, Broadacres Drive, TANNUM SANDS QLD 4680	19/12/2012
OPW/425/2012	Roadworks, Stormwater, Water Infrastructure and Earthworks	Lot 711 SP 252989, Lisa Marie Crescent, BURUA QLD 4680	20/12/2012
OPW/426/2012	Landscaping	Lot 907 SP 246178, Dixon Drive, NEW AUCKLAND QLD 4680	21/12/2012
OPW/431/2012	Earthworks & Clearing Vegetation Under the Planning Scheme	Lot 102 RP 802833, Hooke Road, CALLIOPE QLD 4680	21/12/2012
OPW/427/2012	Road Works, Stormwater, Water Infrastructure, Drainage Works, Earthworks, Sewerage Infrastructure, Signage & Clearing Vegetation Under the Planning Scheme	Lot 951 SP 246155, Briffney Street, KIRKWOOD QLD 4680	24/12/2012
OPW/428/2012	Road Works, Stormwater, Water Infrastructure, Drainage Works, Earthworks, Sewerage Infrastructure, Signage & Clearing Vegetation Under the Planning Scheme	Lot 951 SP 246155, Briffney Street, KIRKWOOD QLD 4680	24/12/2012
OPW/429/2012	Road Works, Stormwater, Water Infrastructure, Drainage Works & Sewerage Infrastructure	Lot 902 SP 246177, Kahler Close, NEW AUCKLAND QLD 4680	24/12/2012
OPW/430/2012	Landscaping	Lot 951 SP 246155, Briffney Street, KIRKWOOD QLD 4680	24/12/2012

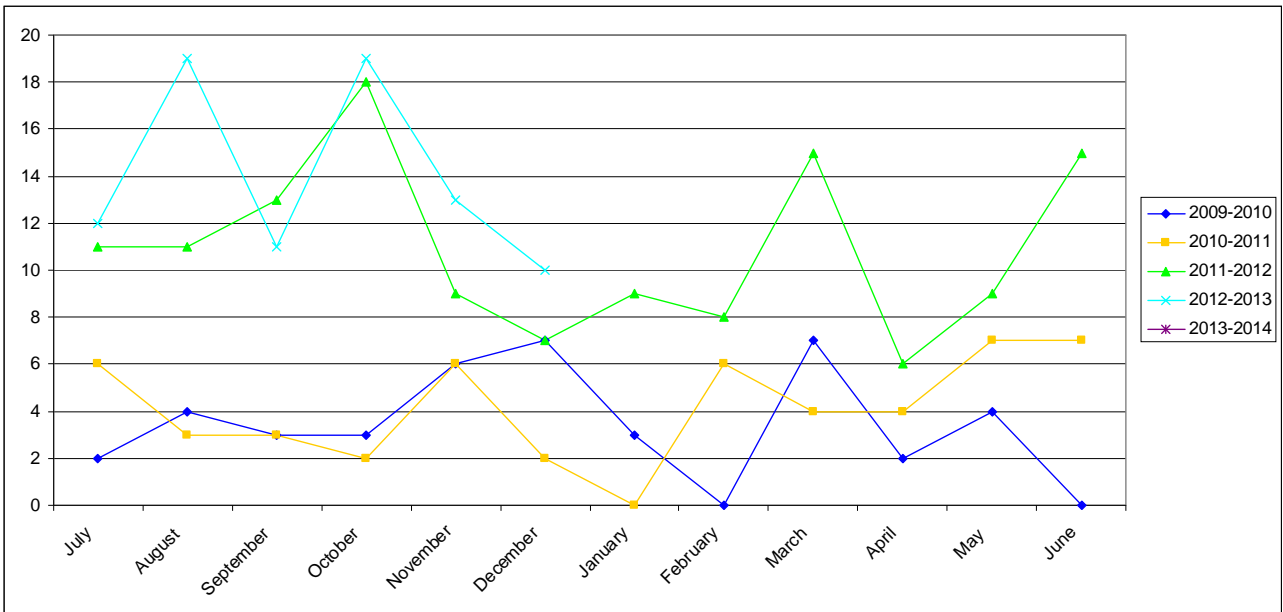
OPERATIONAL WORKS - DELEGATED DECISIONS - December 2012

Application No.	Development	Location	Decision Date
OPW/323/2012	Roadworks, stormwater, earthworks & clearing vegetation under the planning scheme.	Lot 1 CL 40323, East Stowe & Lot 2 SP 246140, East Stowe	5/12/2012
OPW/360/2012	Road Works, Stormwater, Water Infrastructure, Drainage Works, Earthworks, Sewerage Infrastructure and Signage	Lot 508 SP 247064, Auckland	18/12/2012
OPW/361/2012	Road Works, Stormwater, Water Infrastructre, Drainage Works, Earthworks, Sewerage Infrastructure and Signage	Lot 508 SP 247064, Auckland	21/12/2012
OPW/99/2010	Roadworks, Drainage Works, Stormwater, Earthworks, Water & Sewerage Infrastructure	Lot 23 SP 177775, Gladstone	18/12/2012
OPW/370/2012	Stormwater and Earthworks	Lot 148 SP 207287, Auckland	4/12/2012
OPW/264/2012	Road Works and Earthworks	Lot 902 SP 246026, Auckland	21/12/2012
OPW/318/2012	Road Works, Stormwater, Water Infrastructure, Drainage Works, Earthworks, Sewerage Infrastructure, Signage and Clearing Vegetation under the Planning Scheme	Lot 951 SP 246155, Auckland	11/12/2012
OPW/343/2012	Stormwater, Earthworks and Landscaping.	Lot 5 SP 231264, Auckland	11/12/2012
OPW/328/2012	Roadworks, stormwater, water infrastructure, drainage works, earthworks and sewerage infrastructure.	Lot 75 RP 606558, Gladstone	3/12/2012
OPW/359/2012	Landscaping	Lot 904 SP 246177, Auckland & Lot 3 SP 188635, Auckland	17/12/2012

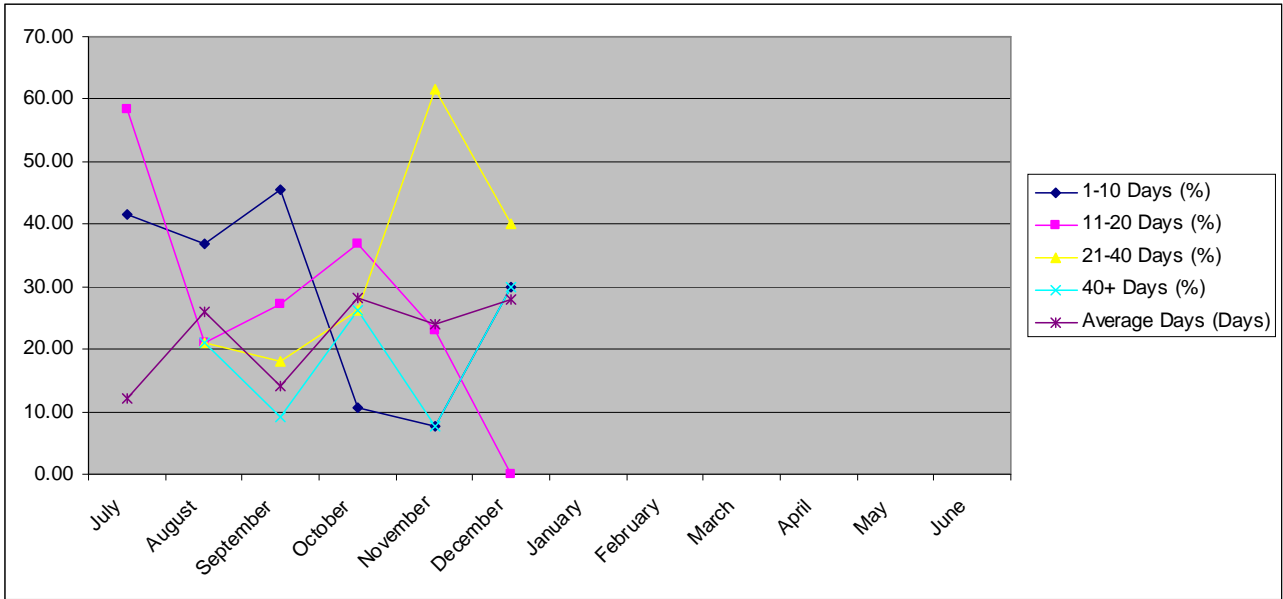
OPERATIONAL WORKS LODGEMENT 2009-2012



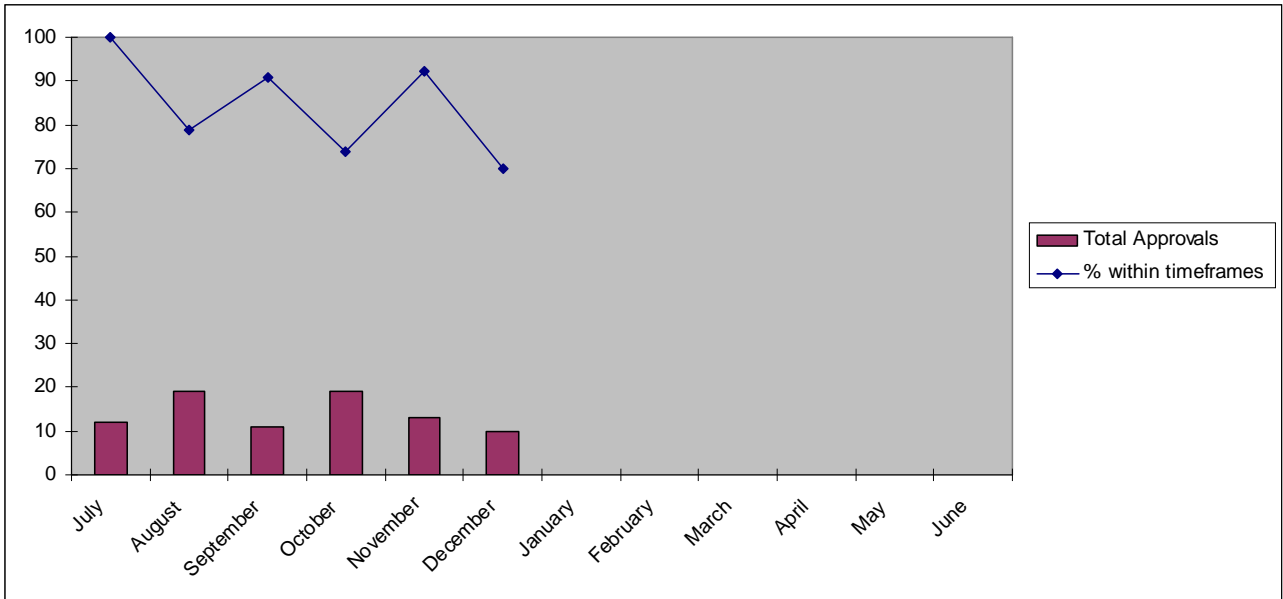
OPERATIONAL WORKS DECISIONS 2009-2012



OPERATIONAL WORKS APPROVAL TIMEFRAMES



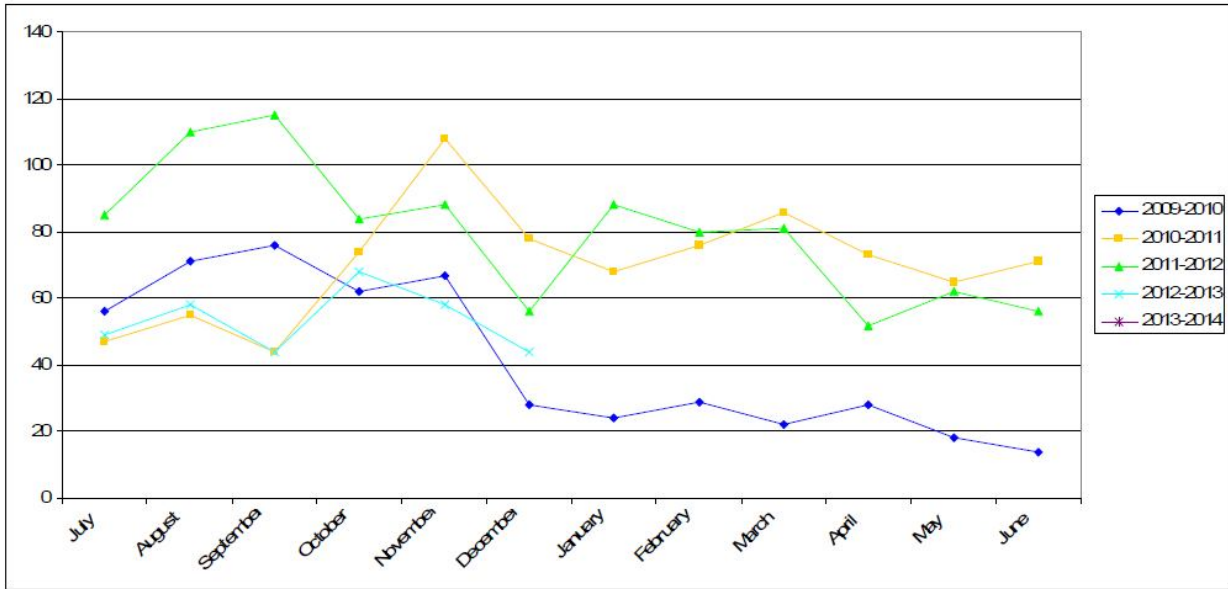
TOTAL APPROVALS & TIMEFRAME %



BUILDING SECTION STATISTICS

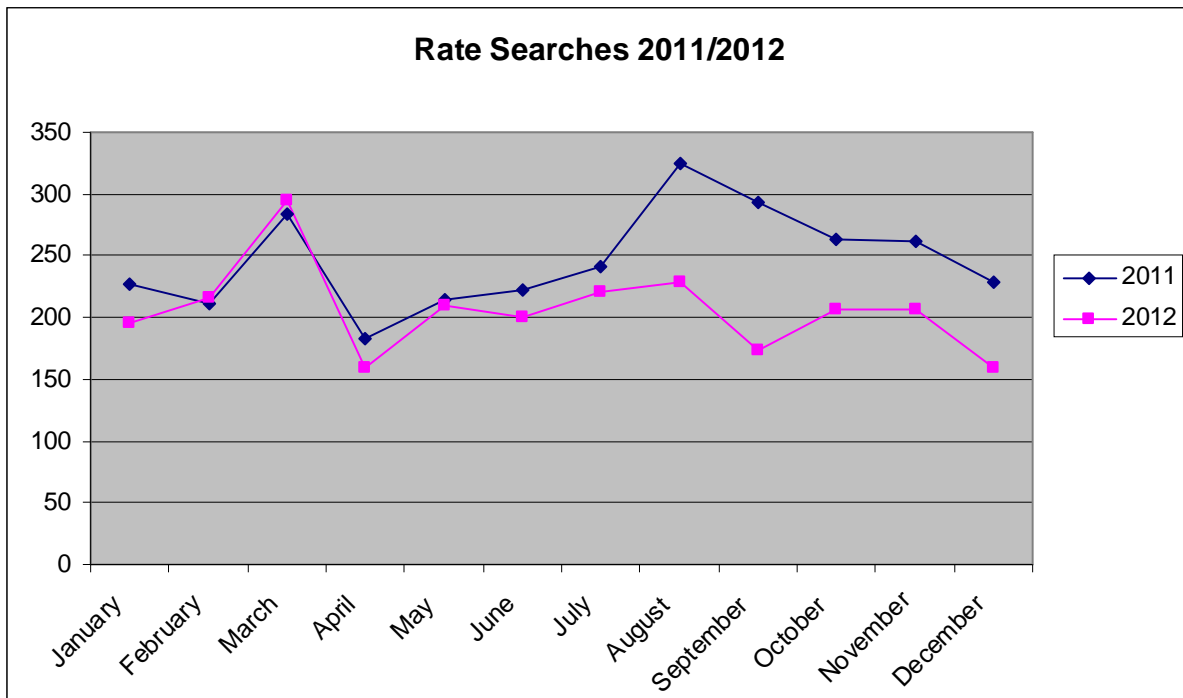
BUILDING SEARCHES CONDUCTED 2009-2012

TOTAL BUILDING SEARCHES

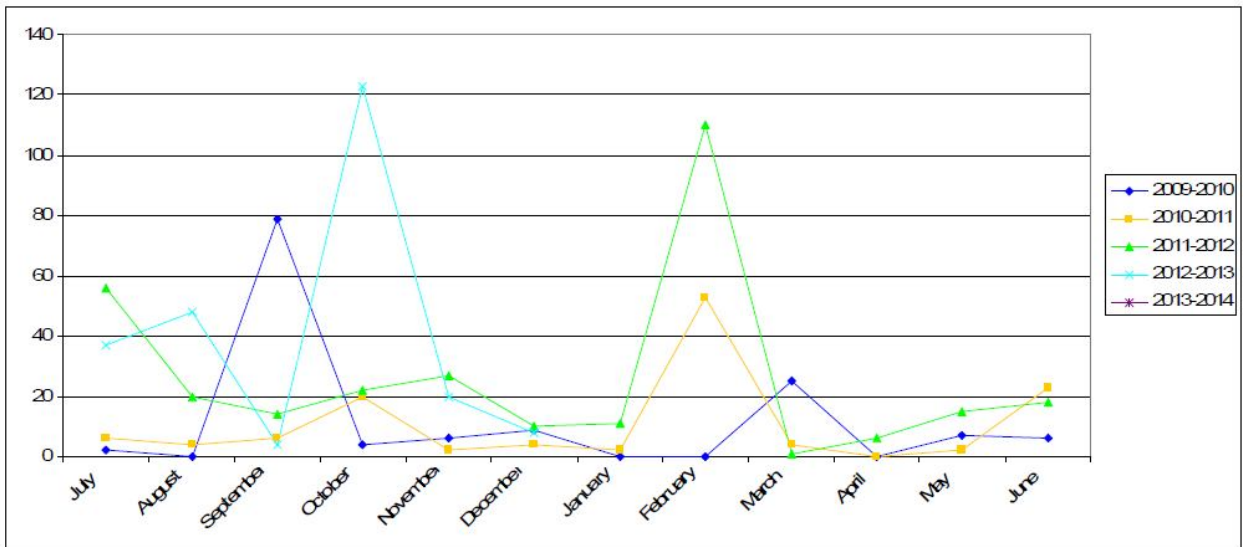


RATES SEARCHES 2011/2012

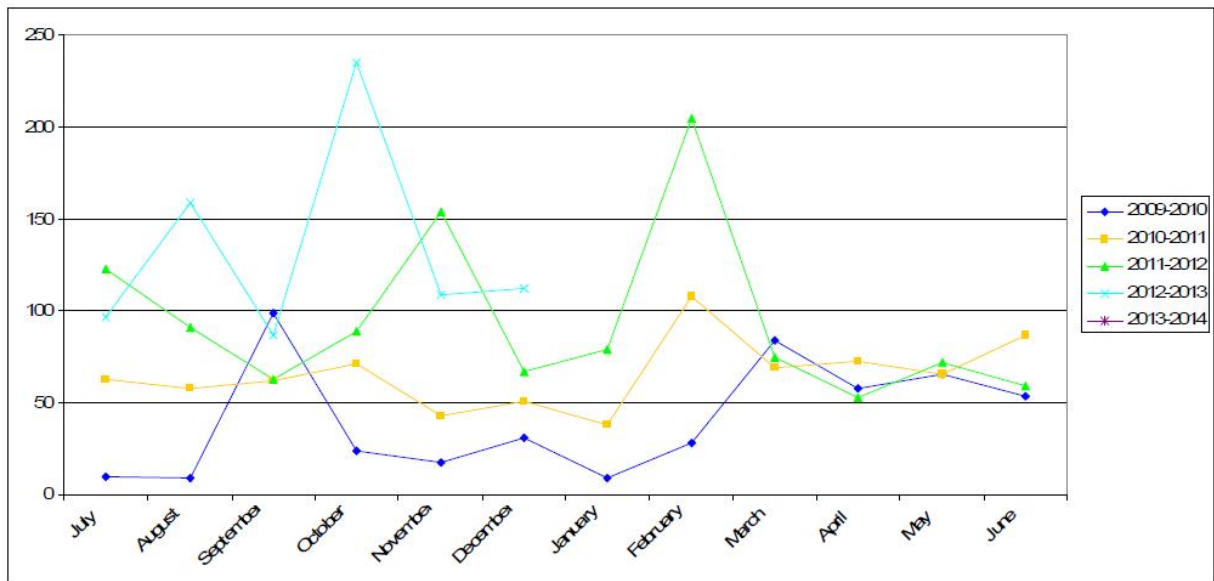
Rate Searches 2011/2012



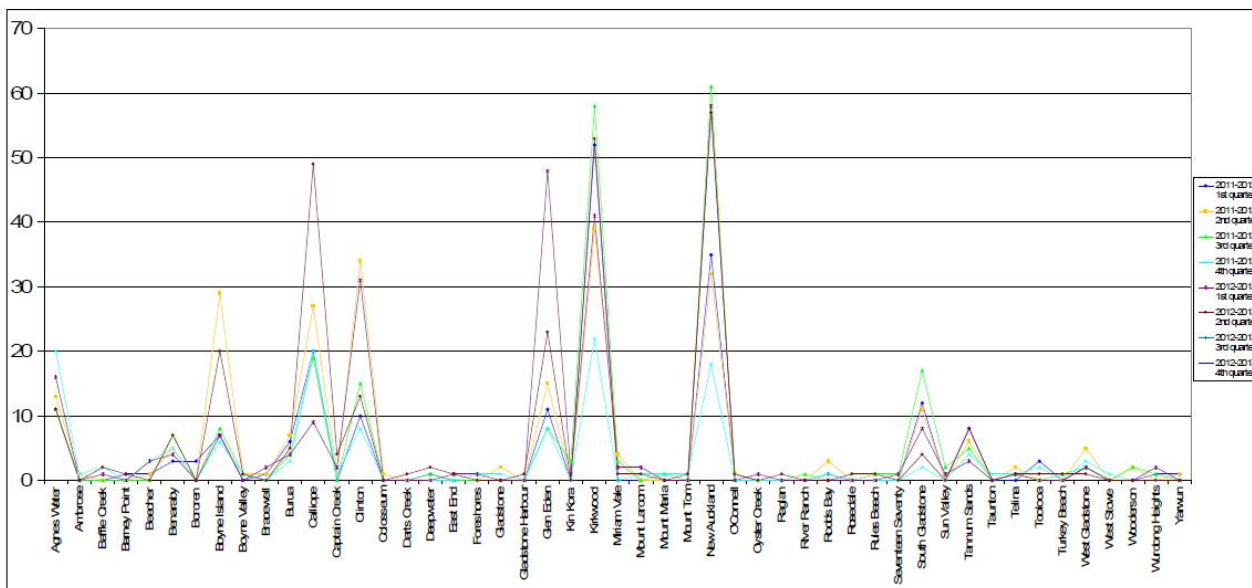
TOTAL UNIT/DUPLEX APPROVALS (NO. OF UNITS)



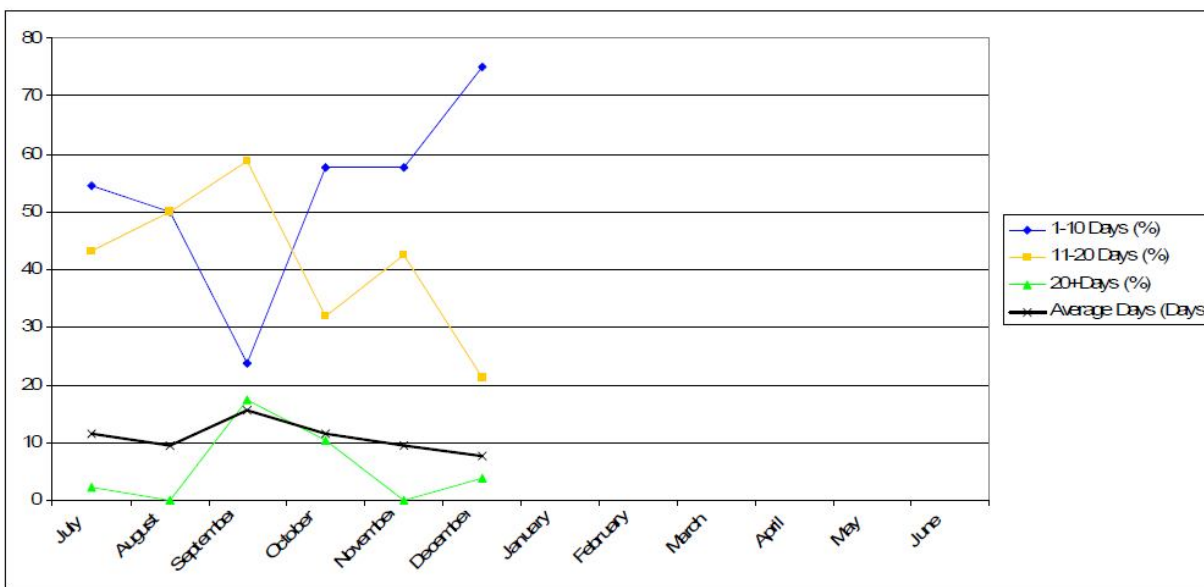
TOTAL HOUSING UNIT APPROVALS (DWELLING, DUPLEX, UNITS)



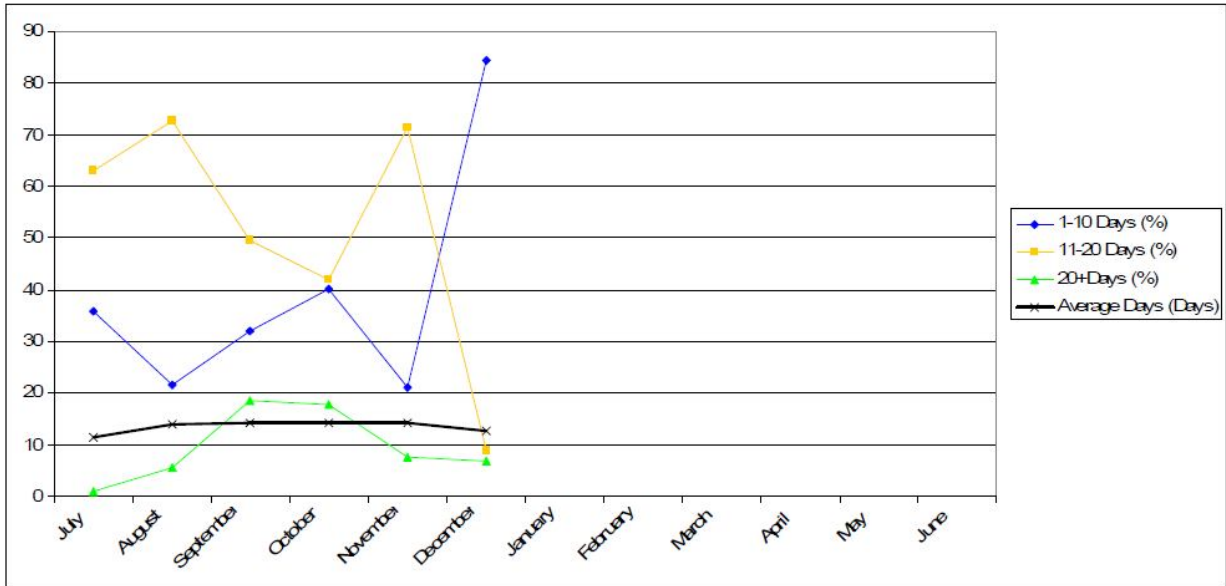
DWELLING APPROVALS BY SUBURB
JULY 2011 – DECEMBER 2012



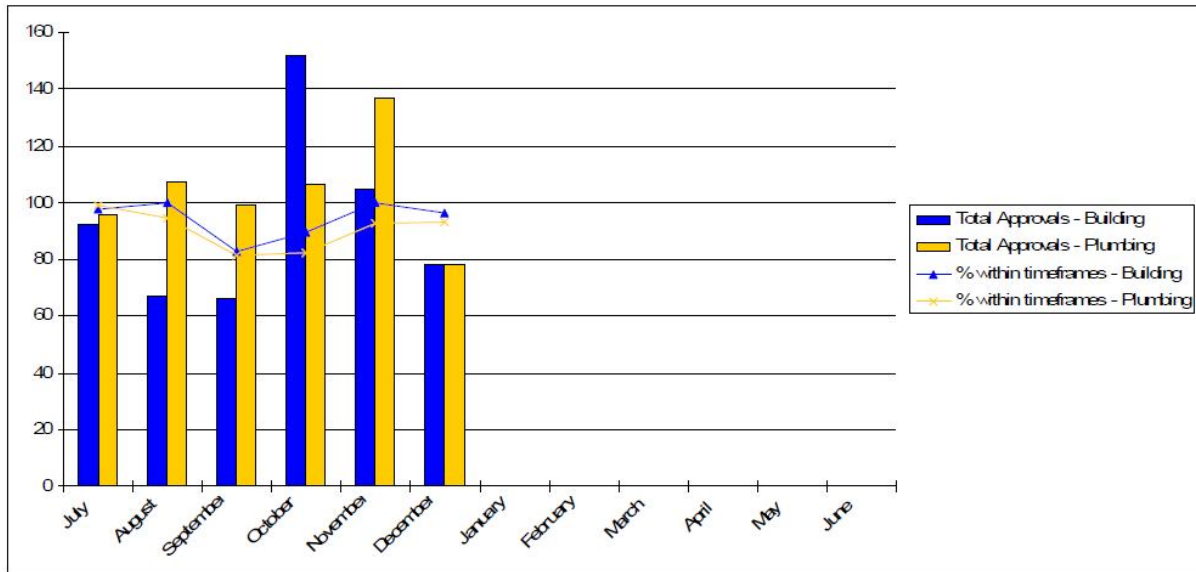
BUILDING APPROVAL TIMES – FROM 1 JULY 2012



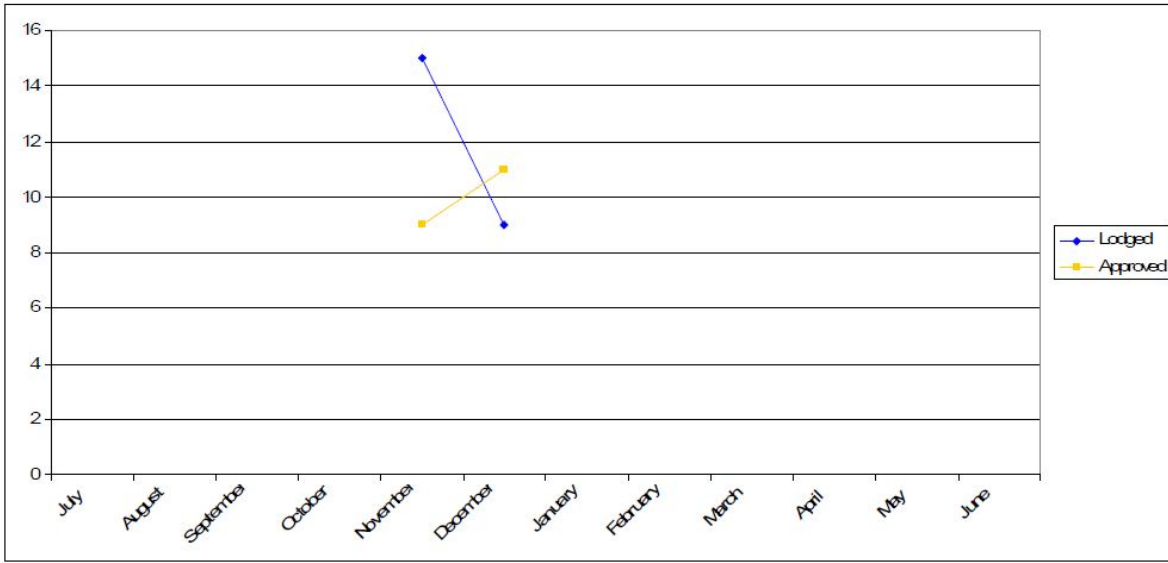
PLUMBING APPROVAL TIMES – FROM 1 JULY 2012



BUILDING & PLUMBING APPROVALS – WITHIN REGULATORY TIMEFRAMES – FROM 1 JULY 2012

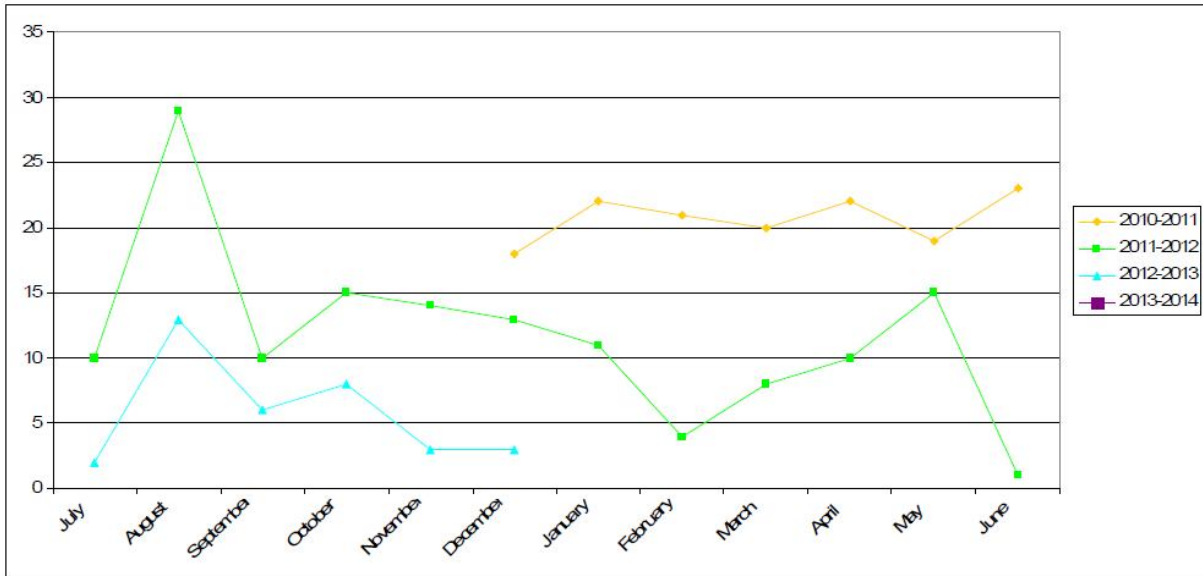


BOUNDARY RELAXATION APPLICATIONS – FROM 1 NOVEMBER 2012



BUILDING & PLUMBING – POOL SAFETY CERTIFICATES ISSUED

POOL SAFETY CERTIFICATES ISSUED



BUILDING & PLUMBING – BUILDING & PLUMBING INSPECTIONS

INSPECTIONS CONDUCTED BY BUILDING & PLUMBING OFFICERS



Jodie Clow
Technical Officer – Planning
10 January 2013