



Development Services

18/2012

Subject: DEVELOPMENT STATISTICS – NOVEMBER 2012

File Reference: DB10.2

The information below is provided for the month of November 2012 in the following areas:-

- New planning applications lodged
- Delegated planning approvals
- Council planning approvals
- Graph Showing Planning Lodgements & Approvals
- New operational works applications lodged
- Delegated Operational works approvals
- Graph Showing Operational Works Lodgements & Approvals
- Graph showing Building Searches completed for 2009-2012
- Graph showing Rate Searches completed 2010/2011/2012
- Graph showing New Dwelling Approval Comparison for 2009-2012
- Graph showing New Dwelling Approvals broken down into LG area.
- Graph showing Pool Safety Certificates Issued
- Graph showing Building & Plumbing Inspections conducted

PLANNING - NEW APPLICATIONS LODGED – November 2012

Application No.	Development	Location	Date Lodged
DA/736/2012	Multiple Unit Residential (Stage 2 - 2 additional Units)	5 Murray Street, WEST GLADSTONE QLD 4680	1/11/2012
DA/737/2012	Host Farm (6 Cabins)	435 Ferguson Road, WEST STOWE QLD 4680	6/11/2012
DA/738/2012	Duplex Unit	17 Telopea Place, KIRKWOOD QLD 4680	6/11/2012
DA/739/2012	Multiple Unit Residential (8 Units)	19 Side Street, WEST GLADSTONE QLD 4680	7/11/2012
DA/740/2012	Duplex Unit	6 Fitzroy Avenue, CLINTON QLD 4680	8/11/2012
DA/741/2012	Extension to Warehouse	97 Hanson Road, GLADSTONE QLD 4680	8/11/2012
DA/742/2012	Dwelling within the front 6m	17 Grahame Colyer Drive, AGNES WATER QLD 4677	8/11/2012
DA/743/2012	Reconfiguration of a Lot (1 into 3)	100 Callemondah Drive, CLINTON QLD 4680	9/11/2012
DA/744/2012	Multiple Unit Residential (4 Units)	48 Stirrat Street, CALLIOPE QLD 4680	14/11/2012
DA/745/2012	Duplex Unit	31 Agnes Street, SOUTH GLADSTONE QLD 4680	15/11/2012
DA/746/2012	Bulk Store (Portable	37 Bensted Road,	16/11/2012

	Buildings)	CALLEMONDAH QLD 4680	
DA/747/2012	Multiple Unit Residential (9 Units)	8 Railway Street, WEST GLADSTONE QLD 4680	16/11/2012
DA/748/2012	Reconfiguring a Lot (1 into 3)	Lot 44 CTN 260, East End Road, BRACEWELL QLD 4680	16/11/2012
DA/749/2012	Commerical Premises (Car Wash)	1 Olsen Avenue, KIN KORA QLD 4680	19/11/2012
DA/750/2012	Multiple Unit Residential (3 Units)	29 Leonard Street, SOUTH GLADSTONE QLD 4680	19/11/2012
DA/751/2012	Reconfiguration of a Lot (1 into 2)	58 Goondoon Street, GLADSTONE QLD 4680	20/11/2012
DA/752/2012	Multiple Unit Residential (21 Townhouses) (Proposed Lot 309)	Lot 25 SP 206873, Col Brown Avenue, CLINTON QLD 4680	20/11/2012
DA/753/2012	Boundary Realignment (2 into 2), Access Easement and Services Easement	60 Findling Road, BOYNE ISLAND QLD 4680	20/11/2012
DA/754/2012	Reconfiguring a Lot (1 into 4)	199 Awoonga Dam Road, BENARABY QLD 4680	21/11/2012
DA/755/2012	Workers Accommodation Camp	101 Calliope River Road, WEST STOWE QLD 4680	22/11/2012
DA/756/2012	Duplex Unit	20 Marringing Road, BENARABY QLD 4680	26/11/2012
DA/757/2012	Multiple Unit Residential (3 Units)	14 Roberts Street, SOUTH GLADSTONE QLD	26/11/2012
DA/758/2012	Sporting Complex	360 Tannum Sands Road, TANNUM SANDS QLD 4680	28/11/2012
DA/759/2012	Reconfiguration of Lot (1 into 2)	Lot 1 SP 231717, Fernfield Road, DEEPWATER QLD 4674	30/11/2012
DA/760/2012	Medical Centre	3 Captain Cook Drive, AGNES WATER QLD 4677	30/11/2012

PLANNING - DELEGATED DECISIONS – November 2012

Application No.	Development	Location	Decision Date
DA/723/2012	Vehicle & Machinery Sales & Hire (Industry Low Impact)	5 Beckinsale Street GLADSTONE QLD 4680	28/11/2012
DA/712/2012	Indoor Entertainment (24hr Gym)	184 Goondoon Street GLADSTONE QLD 4680	6/11/2012
DA/398/2011	Worker's Accommodation (405 Units) and Environmentally Relevant Activity (ERA no. 63 Sewerage Treatment)	Lot 45 SP 235946, Forest Road TARGINIE QLD 4694	21/11/2012
DA/731/2012	Dwelling within the Costal Management Overlay	29 North Break Drive AGNES WATER QLD 4677	13/11/2012
DA/633/2012	Multiple Unit Residential (4 units)	2 Mylne Street WEST GLADSTONE QLD 4680	28/11/2012
DA/699/2012	Expansion to existing Shopping Centre	Lot 87 RP 611756, Dawson Highway WEST GLADSTONE QLD	21/11/2012

		4680	
DA/717/2012	Relatives Apartment	6 Plimsoll Court TANNUM SANDS QLD 4680	19/11/2012
DA/705/2012	Expansion to Commercial Premises	143 Auckland Street GLADSTONE QLD 4680	21/11/2012
DA/519/2012	Reconfiguring a Lot (1 into 4)	96 Butcher Road WURDONG HEIGHTS QLD 4680	20/11/2012
DA/532/2012	Reconfiguring a Lot (3 into 4)	48352 Bruce Highway IVERAGH QLD 4680	6/11/2012
DA/506/2012	Reconfiguring a Lot (1 into 4)	25 Jeana Close BOYNE ISLAND QLD 4680	19/11/2012
DA/685/2012	Reconfiguring a Lot (3 into 5)	203 Jim Whyte Way, Lot 621 & 622 Jim Whyte Way BURUA QLD 4680	29/11/2012
DA/704/2012	Dwelling higher than 9m, within front 6m and 1.5m side boundary	9 Groper Street, TANNUM SANDS QLD 4680	19/11/2012
DA/650/2012	Reconfiguring a Lot (1 into 5)	268 Schulze Road, BEECHER QLD 4680	12/11/2012
DA/703/2012	Reconfiguring a Lot (2 into 4) Stage 10D Proposed Lot 457 & 711 SP252989	Lot 457 SP 239706, Jim Whyte Way, BURUA QLD 4680	30/11/2012

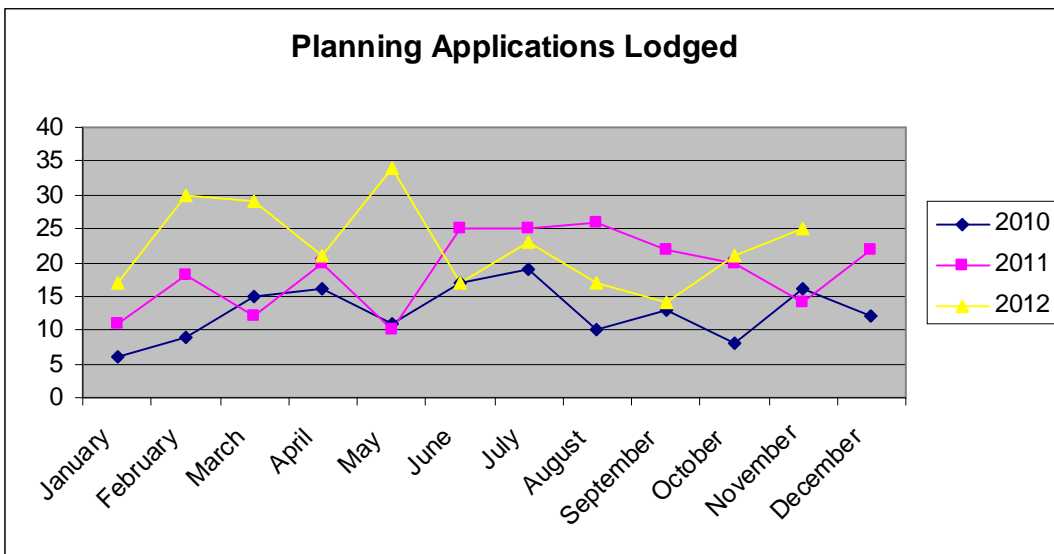
PLANNING – COUNCIL DECISIONS – November 2012

Application No.	Development	Location	Decision Date
DA/686/2012	Duplex Unit	2 Wentworth Place GLEN EDEN QLD 4680	6/11/2012
DA/664/2012	Multiple Unit Residential (52 Units)	550 Kirkwood Road, KIRKWOOD QLD 4680	6/11/2012
DA/641/2012	Change in Zone from Rural Residential to Village & Reconfiguration of a Lot (1 into 11)	22 Morcom Street, CALLIOPE QLD 4680	6/11/2012
DA/688/2012	Transport & Storage (Warehouse)	44 Toolooa Street SOUTH GLADSTONE QLD 4680	6/11/2012
DA/689/2012	47 Dickinson Road NEW AUCKLAND QLD 4680	Change in Zone from Rural to Park Residential & Reconfiguration of a Lot (1 into 2)	6/11/2012
DA/671/2012	Shop 1- 3/83 Sun Valley Road, KIN KORA QLD 4680	Place of Worship & Commercial Premises	17/11/2012
DA/555/2012	81 Hanson Road, GLADSTONE QLD 4680	Office	17/11/2012
DA/473/2012	Lot 501 SP 209118 & Lot 807 SP 250624 Jim Whyte Way, BURUA QLD 4680	Reconfiguring a Lot (2 into 30) - Stage 8A and Material Change of Use - from Rural to Rural Residential	17/11/2012

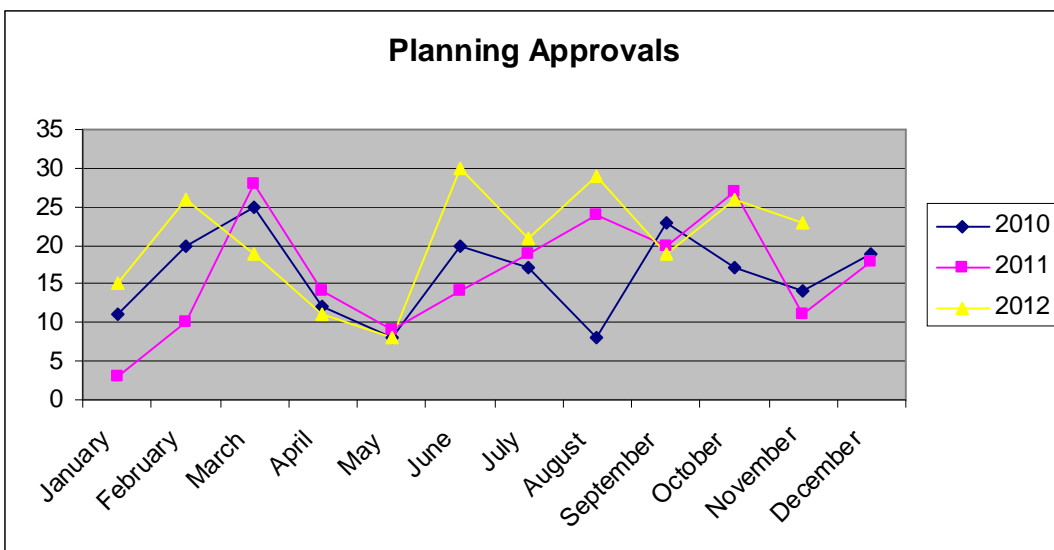
PLANNING – NEGOTIATED DECISIONS – November 2012

Application No.	Development	Location	Decision Date
DA/541/2012	Multiple Unit Residential (52 Units)	Lot 508 SP 247064, Kirkwood Road NEW AUCKLAND QLD 4680	20/11/2012
DA/651/2012	Multiple Unit Residential (33 Units)	Lot 6 RP 604140, Gladstone	30/11/2012

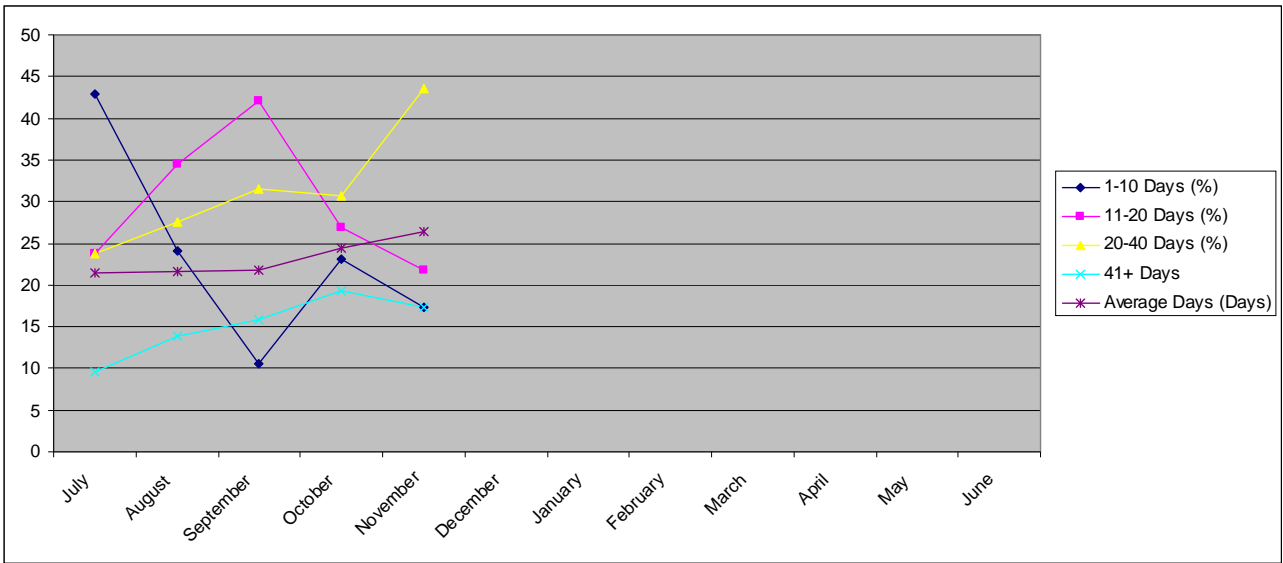
PLANNING APPLICATIONS LODGED 2010-2012



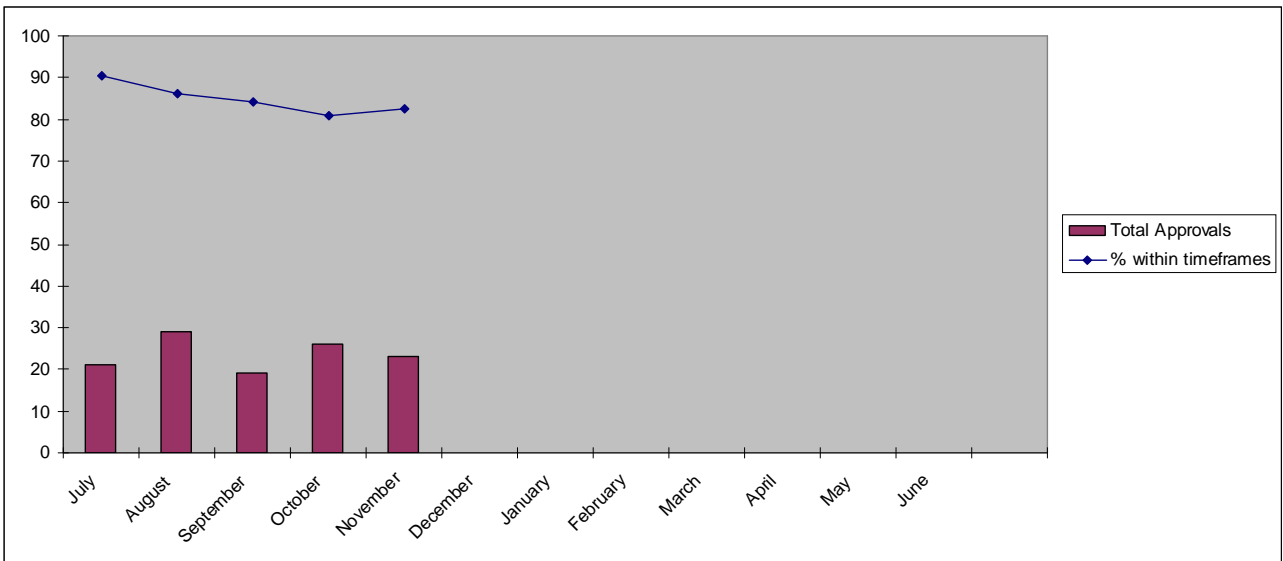
PLANNING APPLICATION APPROVALS 2010-2012



PLANNING APPROVAL TIMEFRAMES



TOTAL APPROVALS & TIMEFRAME %



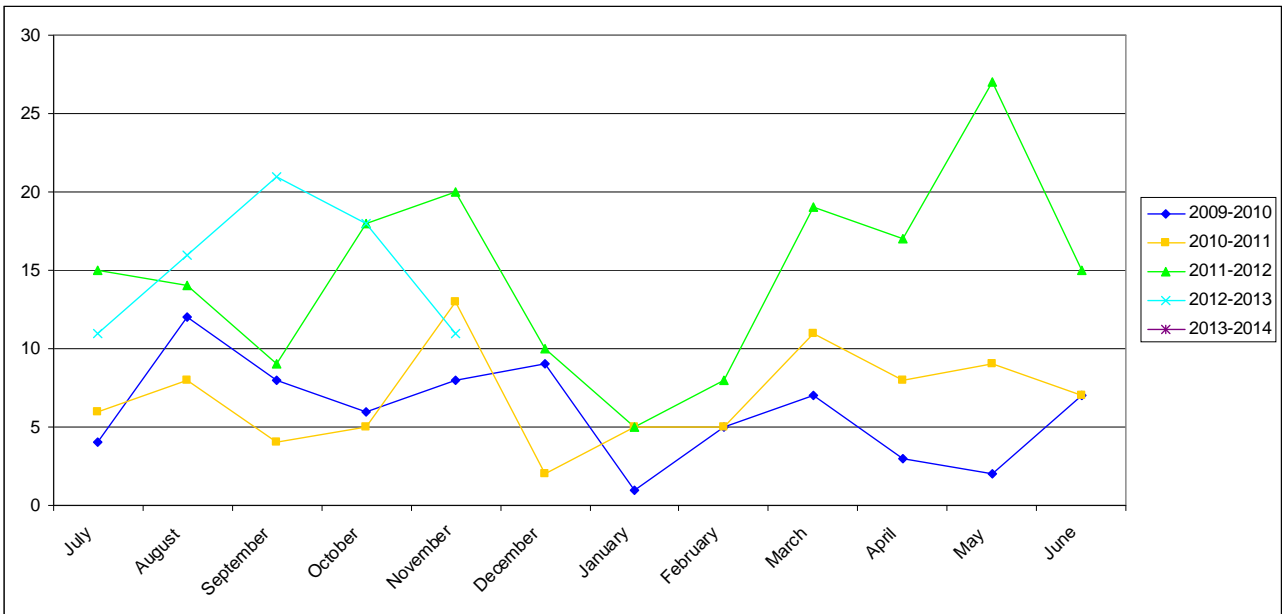
OPERATIONAL WORKS - NEW APPLICATIONS LODGED - October 2012

Application No.	Development	Location	Date Lodged
OPW/403/2012	Stormwater, Earthworks & Sewerage Infrastructure	4 Norton Lane WEST GLADSTONE QLD 4680	1/11/2012
OPW/404/2012	Road Works	Lot 20 SP 182692, The Esplanade TANNUM SANDS QLD 4680	2/11/2012
OPW/405/2012	Stormwater, Water Infrastructure & Sewerage Infrastructure	12 Linville Court KIN KORA QLD 4680	2/11/2012
OPW/406/2012	Roadworks, Stormwater, Drainage Works, Earthworks & Landscaping	39 Bensted Road CALLEMONDAH QLD 4680	5/11/2012
OPW/407/2012	Road Works, Stormwater, Water Infrastructure, Drainage Works, Earthworks, Sewerage Infrastructure & Clearing Vegetation Under the Planning Scheme	Lot 951 SP 246155, Briffney Street KIRKWOOD QLD 4680	12/11/2012
OPW/408/2012	Signage	19 Applin Place TANNUM SANDS QLD 4680	14/11/2012
OPW/409/2012	Landscaping	Lot 951 SP 246155, Briffney Street KIRKWOOD QLD 4680	16/11/2012
OPW/410/2012	Road Works, Stormwater, Water Infrastructure, Drainage Works, Earthworks, Sewerage Infrastructure, Landscaping and Clearing Vegetation Under the Planning Scheme	10 Wyndham Avenue BOYNE ISLAND QLD 4680	20/11/2012
OPW/411/2012	Road Works, Stormwater, Water Infrastructure, Earthworks & Sewerage Infrastructure	19 Worthington Street WEST GLADSTONE QLD 4680	22/11/2012
OPW/412/2012	Road Works, Stormwater, Water Infrastructure, Drainage Works, Earthworks, Sewerage Infrastructure, Landscaping & Signage	16 Johnson Street GLEN EDEN QLD 4680	30/11/2012
OPW/413/2012	Stormwater & Sewerage Infrastructure	8 Wenitong Street WEST GLADSTONE QLD 4680	30/11/2012

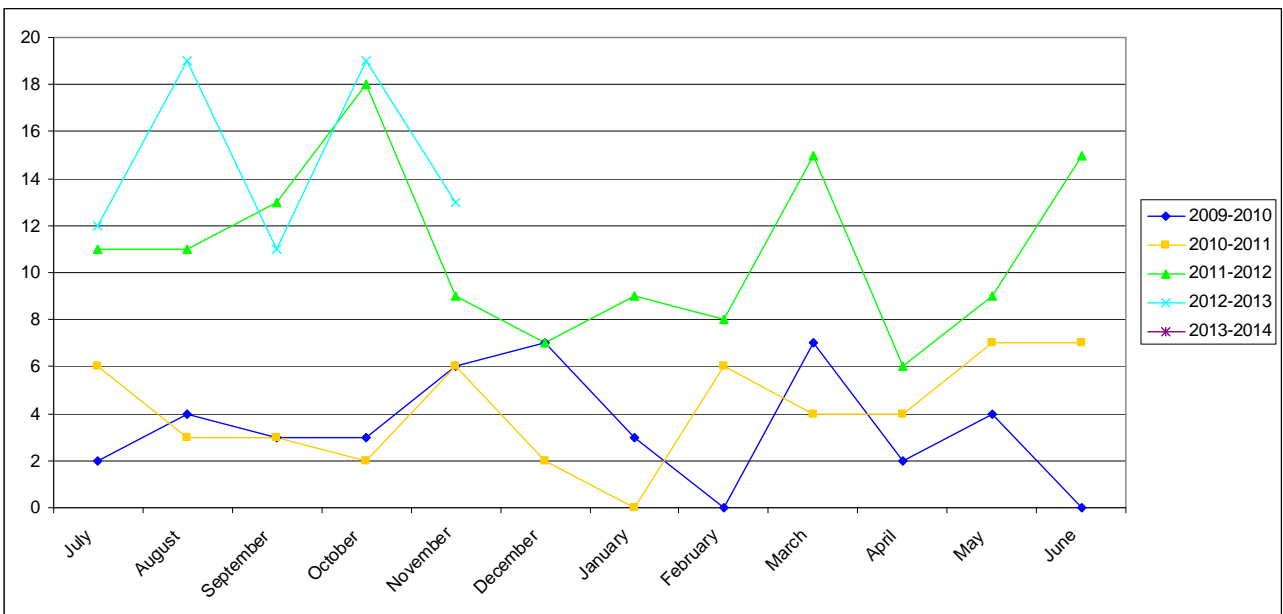
OPERATIONAL WORKS - DELEGATED DECISIONS - October 2012

Application No.	Development	Location	Decision Date
OPW/392/2012	Landscaping	Lot 800 SP 231566, Central Avenue CALLIOPE QLD 4680	12/11/2012
OPW/376/2012	Landscaping	Lot 950 SP 246172, Kirkwood Road KIRKWOOD QLD 4680	5/11/2012
OPW/379/2012	Landscaping	Lot 950 SP 246172, Kirkwood Road KIRKWOOD QLD 4680	7/11/2012
OPW/345/2012	Roadworks (Driveway), Stormwater, Drainage Works, Earthworks and Landscaping	23 Roberts Street SOUTH GLADSTONE QLD 4680	14/11/2012
OPW/367/2012	Road Works, Water & Sewerage Infrastructure	Lot 904 SP 246177, Dixon Drive NEW AUCKLAND QLD 4680	26/11/2012
OPW/388/2012	Landscaping	Lot 101 RP 836843, Tarrawonga Drive CALLIOPE QLD 4680	16/11/2012
OPW/385/2012	Earthworks	22 Cania Way CLINTON QLD 4680	2/11/2012
OPW/273/2012	Roadworks, stormwater, water infrastructure, drainage works, earthworks, sewerage infrastructure, signage & clearing vegetation under the planning scheme.	1 Collins Lane KIN KORA QLD 4680	12/11/2012
OPW/364/2012	Stormwater and Driveway	46 Chapple Street GLADSTONE QLD 4680	8/11/2012
OPW/348/2012	Sewerage Infrastructure	17 Victoria Avenue GLEN EDEN QLD 4680	2/11/2012
OPW/373/2012	Earthworks	Lot 504 SP 233801, Kirkwood Road NEW AUCKLAND QLD 4680	14/11/2012
OPW/353/2012	Roadworks, Stormwater, Water Infrastructure, Drainage Works, Earthworks, Sewerage Infrastructure & Signage.	Lot 508 SP 247064, Kirkwood Road NEW AUCKLAND QLD 4680	26/11/2012
OPW/233/2011	Roadworks, Stormwater, Drainage Works, Earthworks, Sewerage Infrastructure & Landscaping	57 Toolooa Street SOUTH GLADSTONE QLD 4680	14/11/2012

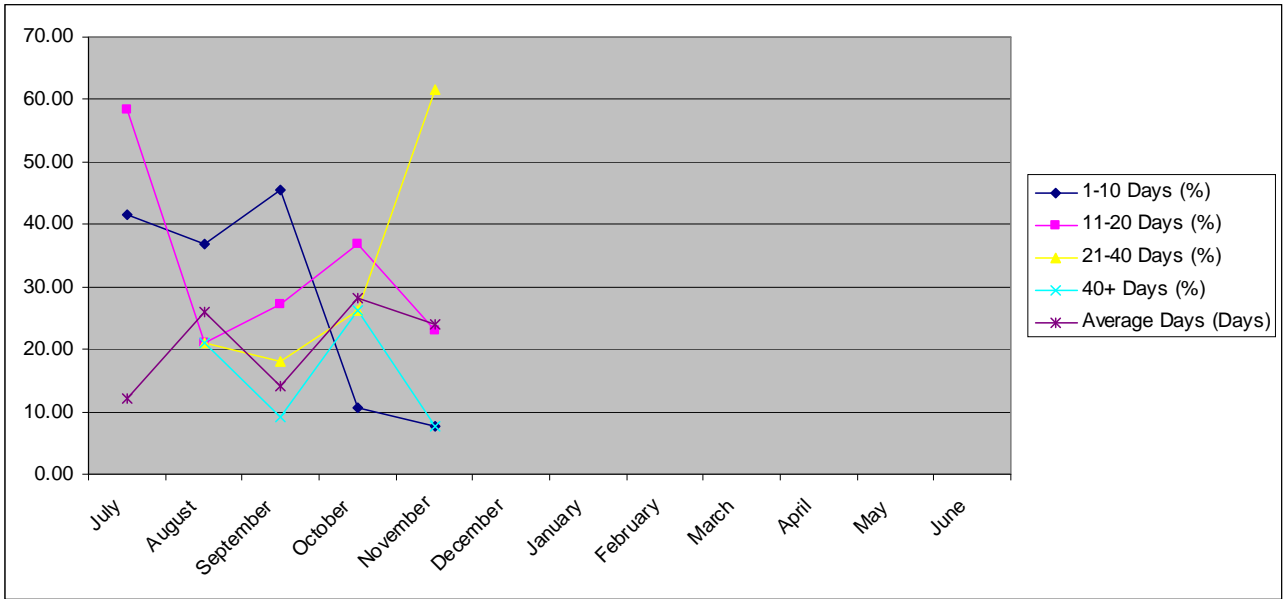
OPERATIONAL WORKS LODGEMENT 2009-2012



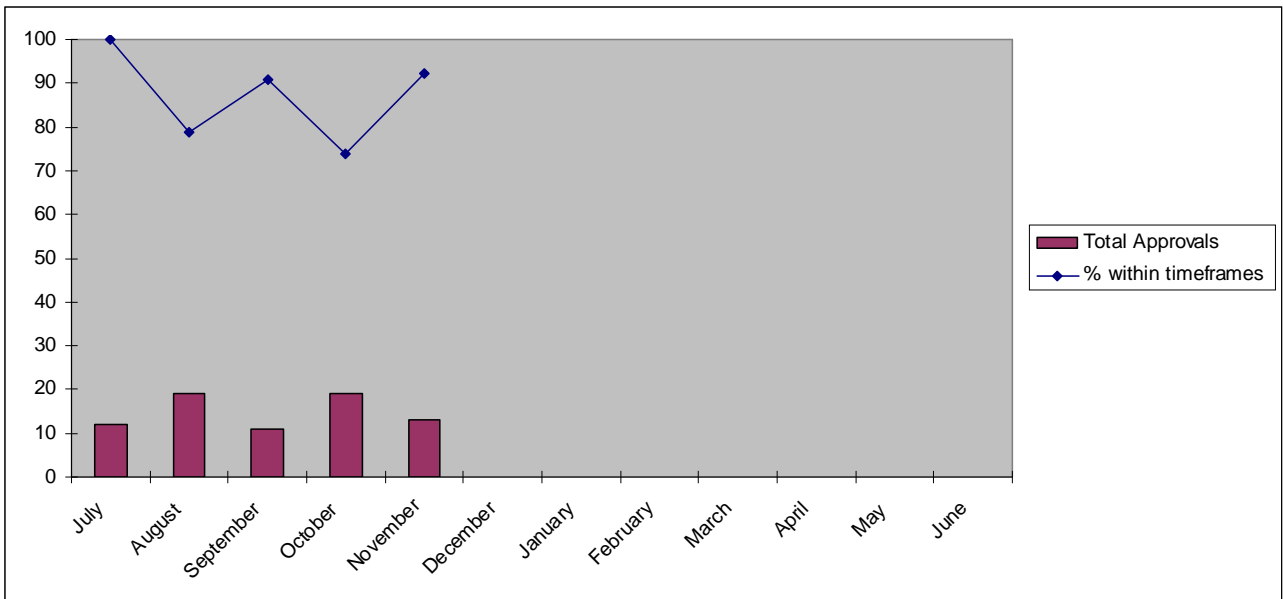
OPERATIONAL DECISIONS 2009-2012



OPERATIONAL WORKS APPROVAL TIMEFRAMES



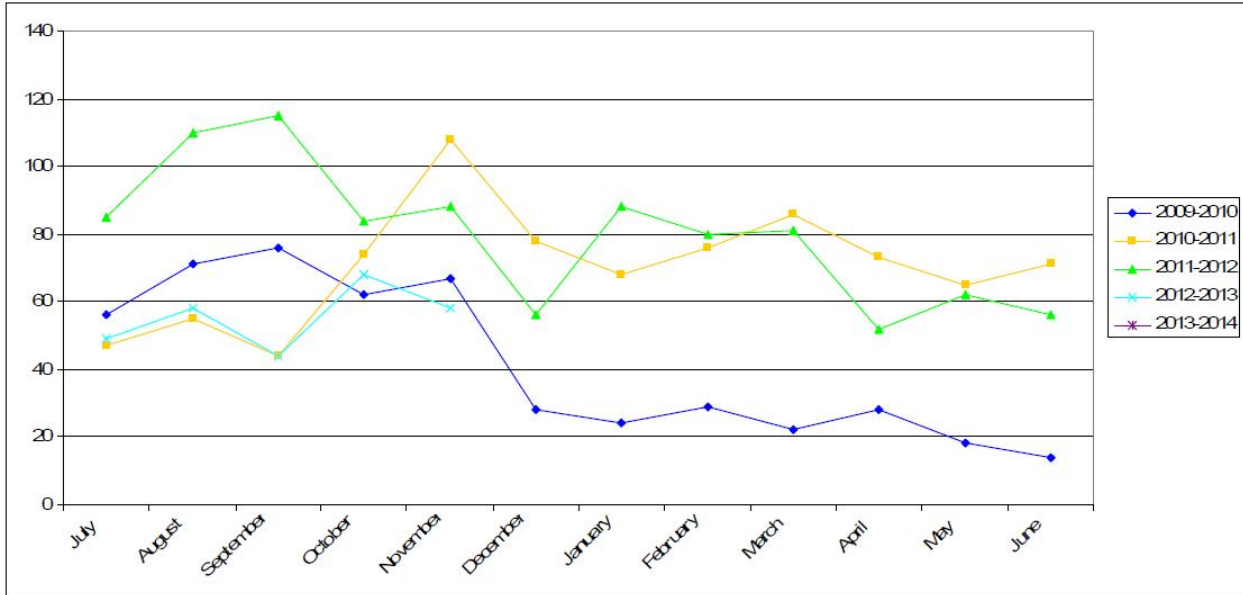
TOTAL APPROVALS & TIMEFRAME %



BUILDING SECTION STATISTICS

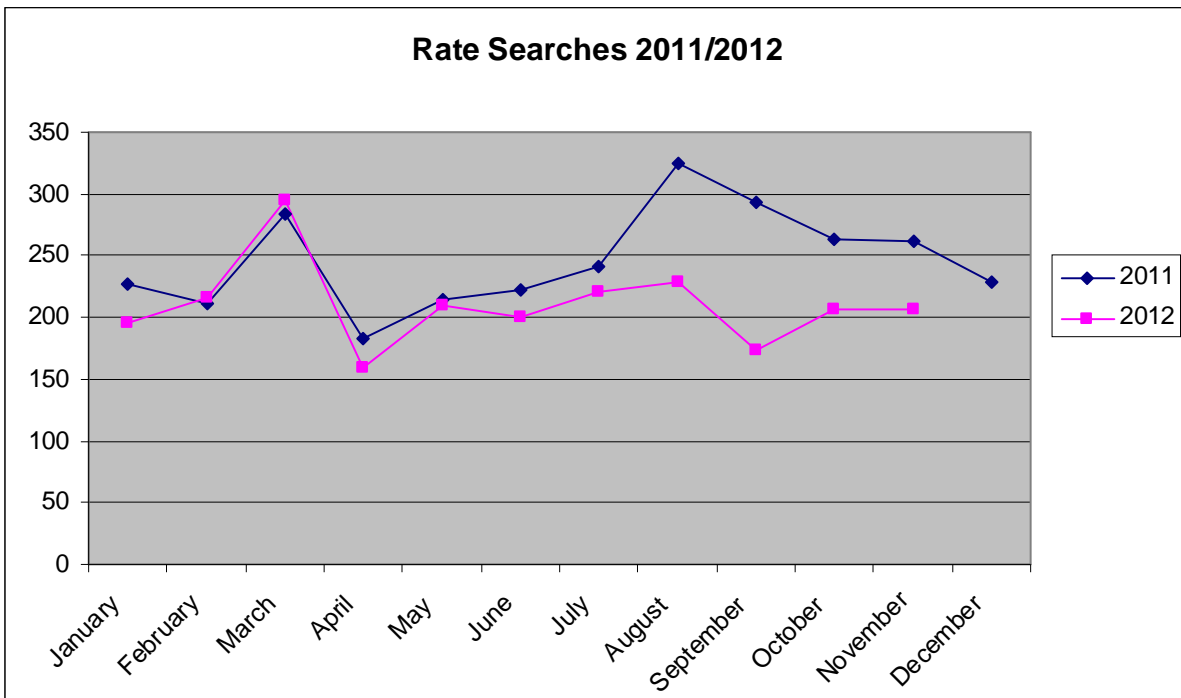
BUILDING SEARCHES CONDUCTED 2009-2012

TOTAL BUILDING SEARCHES

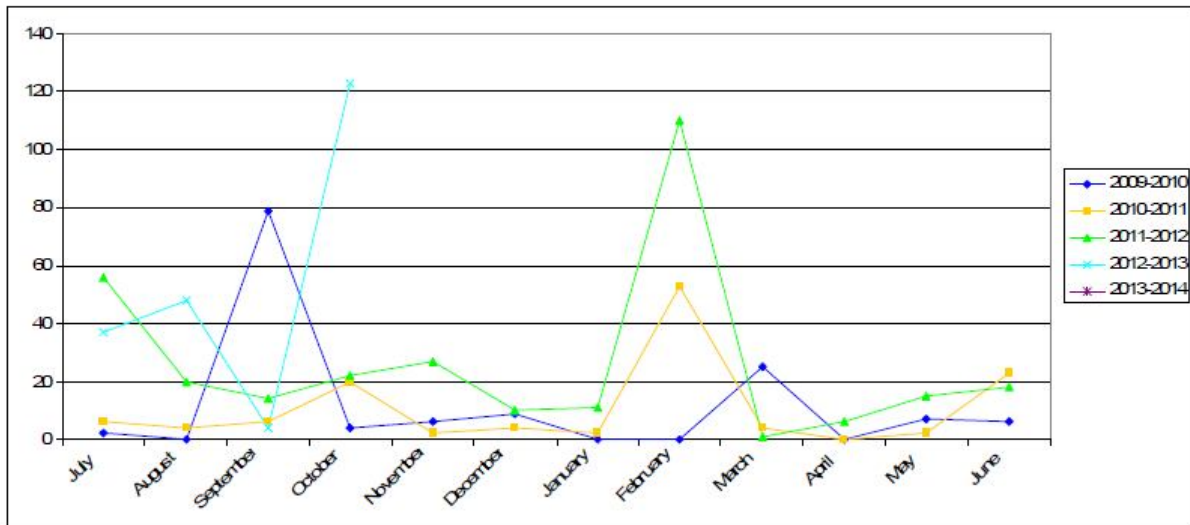


RATES SEARCHES 2011/2012

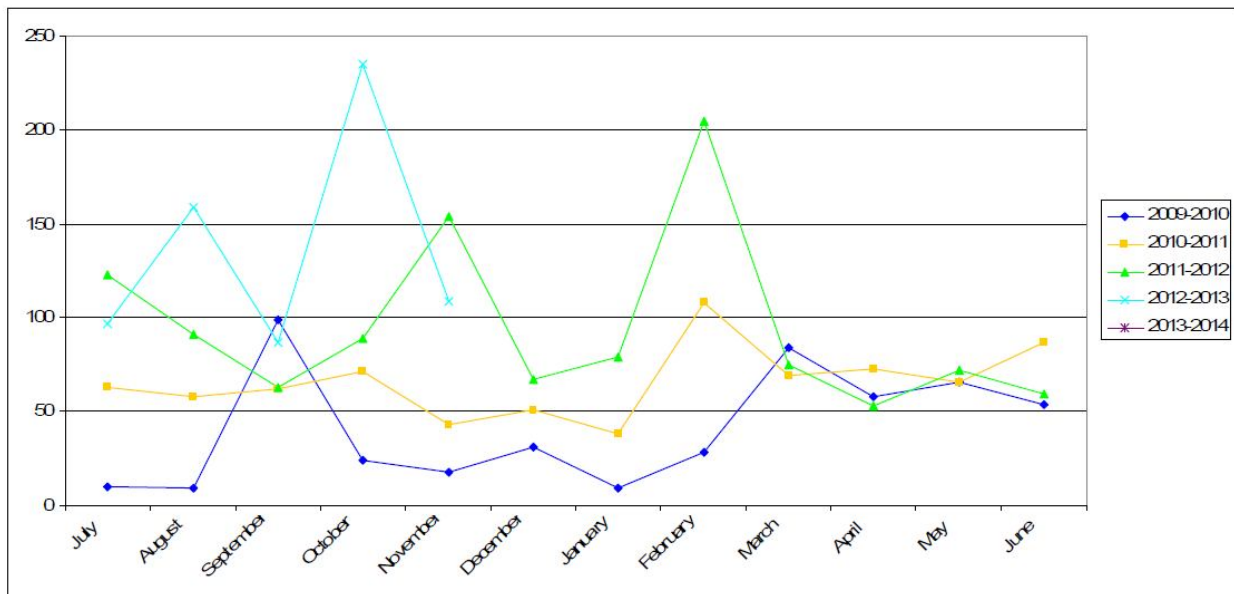
Rate Searches 2011/2012



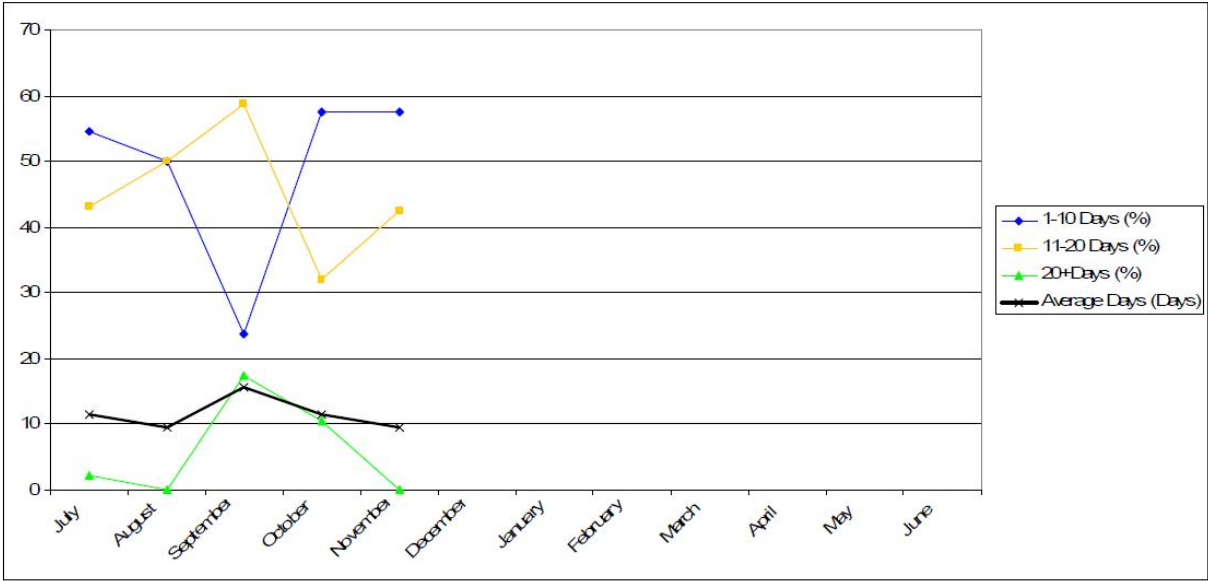
TOTAL UNIT/DUPLEX APPROVALS (NO. OF UNITS)



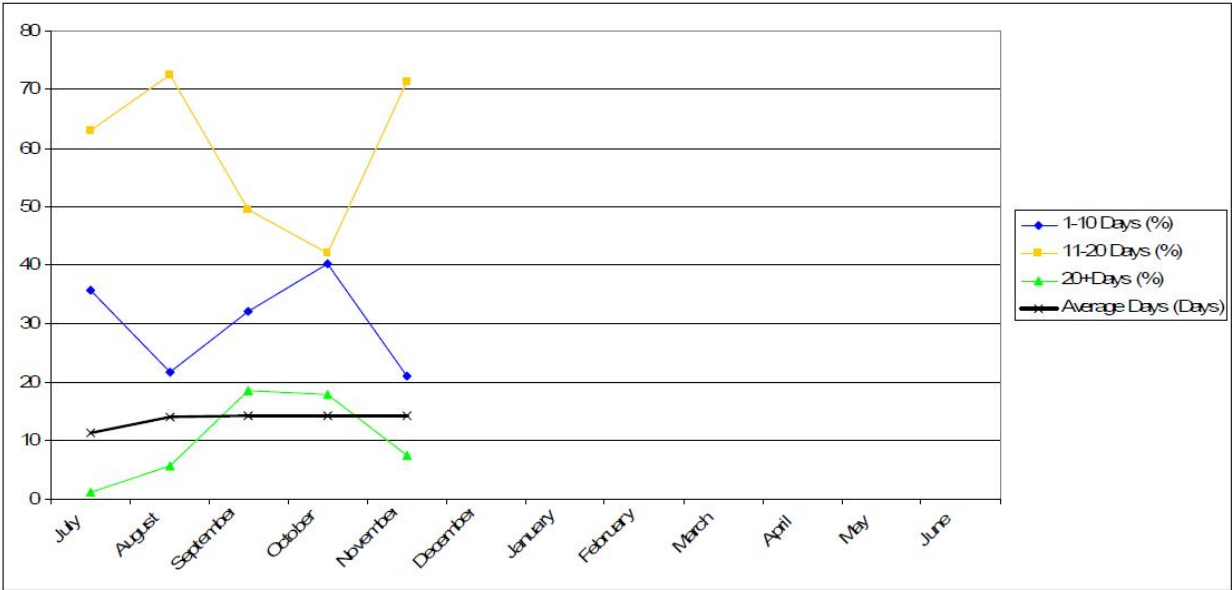
TOTAL HOUSING UNIT APPROVALS (DWELLING, DUPLEX, UNITS)



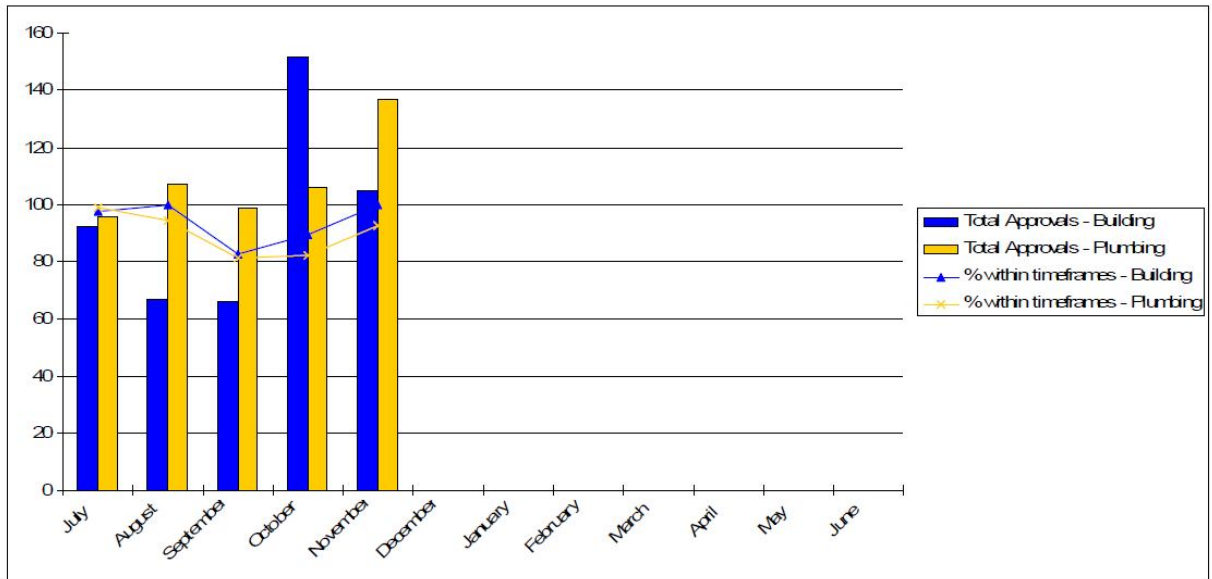
BUILDING APPROVAL TIMES – FROM 1 JULY 2012



PLUMBING APPROVAL TIMES – FROM 1 JULY 2012

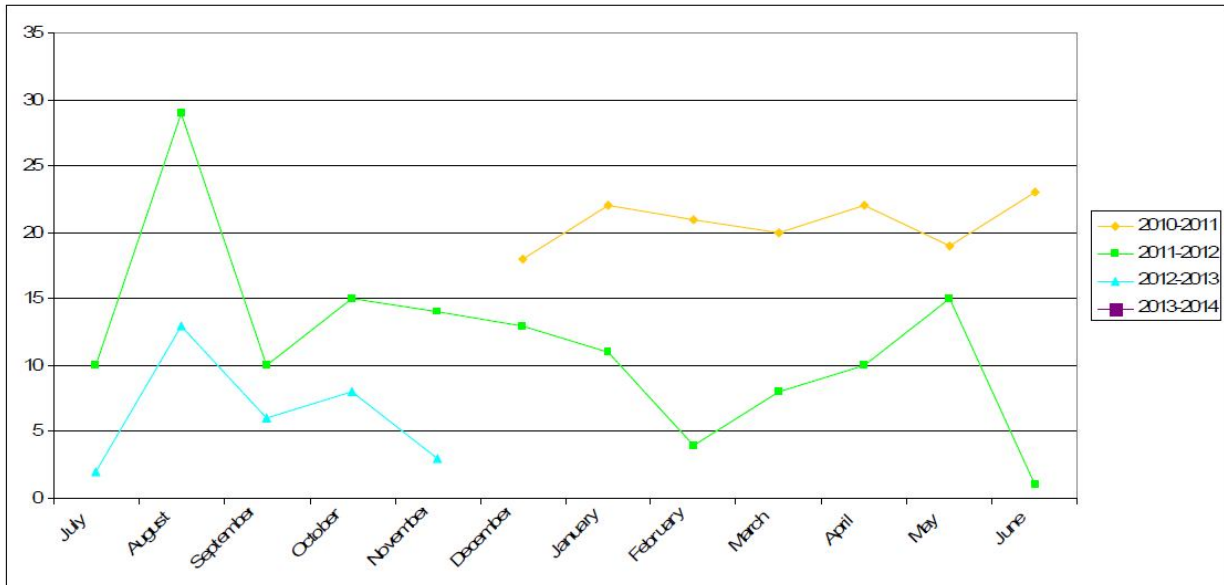


BUILDING & PLUMBING APPROVALS – WITHIN REGULATORY TIMEFRAMES – FROM 1 JULY 2012



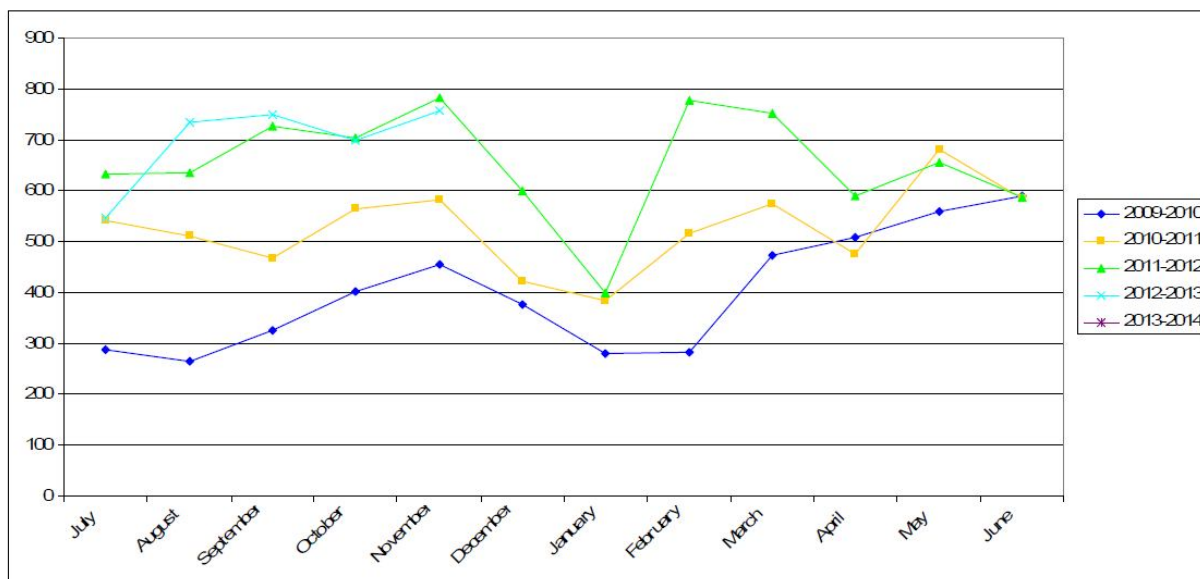
BUILDING & PLUMBING – POOL SAFETY CERTIFICATES ISSUED

POOL SAFETY CERTIFICATES ISSUED



BUILDING & PLUMBING – BUILDING & PLUMBING INSPECTIONS

INSPECTIONS CONDUCTED BY BUILDING & PLUMBING OFFICERS



Jodie Clow
Technical Officer – Planning
12 December 2012