



## Development Services

13/2012

**Subject: DEVELOPMENT STATISTICS – JULY 2012**

**File Reference: DB10.2**

The information below is provided for the month of July 2012 in the following areas:-

- New planning applications lodged
- Delegated planning approvals
- Council planning approvals
- Graph Showing Planning Lodgements & Approvals
- New operational works applications lodged
- Delegated Operational works approvals
- Graph Showing Operational Works Lodgements & Approvals
- Graph showing Building Searches completed for 2009-2012
- Graph showing Rate Searches completed 2010/2011/2012
- Graph showing New Dwelling Approval Comparison for 2009-2012
- Graph showing New Dwelling Approvals broken down into LG area.
- Graph showing Pool Safety Certificates Issued
- Graph showing Building & Plumbing Inspections conducted

### **PLANNING - NEW APPLICATIONS LODGED – July 2012**

Application No.	Development	Location	Date Lodged
DA/660/2012	Transport & Storage (Warehouse & Ancillary Offices)	3 Boowan Court, CALLEMONDAH QLD 4680	2/7/2012
DA/661/2012	Commercial Premises (Public Laundromat)	111 Emmadale Drive, NEW AUCKLAND QLD 4680	2/7/2012
DA/662/2012	Industry (Low Impact)	8 Side Street, GLADSTONE QLD 4680	2/7/2012
DA/663/2012	Workers Accommodation - 450 Rooms (Stage 2)	149 Stowe Road, CALLIOPE QLD 4680	3/7/2012
DA/664/2012	Food Premises (3 Tenancies), Medical Centre (Physiotherapy), Indoor Entertainment (Gymnasium), Extension to Shopping Centre & Reconfiguration of a Lot (1 into 2 plus access easement)	550 Kirkwood Road, KIRKWOOD QLD 4680	3/7/2012
DA/665/2012	Stage 2 'Super Lot' and Balance Land	Lot 60 SP 165461, Broadacres Drive, TANNUM SANDS QLD 4680	4/7/2012
DA/666/2012	Stage 3 'Super Lot' and Balance Land	Lot 60 SP 165461, Broadacres Drive, TANNUM SANDS QLD 4680	4/7/2012

DA/667/2012	Road Dedication	Lot 60 SP 165461, Broadacres Drive, TANNUM SANDS QLD 4680	4/7/2012
DA/668/2012	Reconfiguring a Lot (1 into 43)	Lot 950 SP 246171, Kirkwood Road, KIRKWOOD QLD 4680	4/7/2012
DA/669/2012	Residential Secondary (Duplex Unit)	14 Telopea Place, KIRKWOOD QLD 4680	5/7/2012
DA/670/2012	Local Industry & Contractors	39 Bensted Road, CALLEMONTDAH QLD 4680	9/7/2012
DA/671/2012	Place of Worship & Commercial Premises	Shop 1-3, 83 Sun Valley Road, KIN KORA QLD 4680	10/7/2012
DA/672/2012	Sport and Recreation (Valley Grounds Club House)	Lot 206 SP 111013, Anderson Street, CLINTON QLD 4680	12/7/2012
DA/673/2012	Duplex Unit	4 Phoenix Place, TELINA QLD 4680	12/7/2012
DA/674/2012	Boundary Realignment 2 into 2	17 Beach Avenue, TANNUM SANDS QLD 4680	16/7/2012
DA/675/2012	Multiple Unit Residential (11 Units)	11 Pacific Court, KIN KORA QLD 4680	17/07/2012
DA/676/2012	Small Lot Housing & Reconfiguration of a Lot (1 into 2)	1 Eugenie Court, GLEN EDEN QLD 4680	17/07/2012
DA/677/2012	Reconfiguring a Lot (3 into 27)	Lot 333 CTN 1657, Hanson Road, GLADSTONE QLD 4680	18/7/2012
DA/678/2012	Reconfiguring of a Lot (1 into 3)	ot 2 SP 228185, Curtis Unnamed Road, CURTIS ISLAND QLD 4680	19/7/2012
DA/679/2012	Development Permit for MCU for residential development Development Permit for Stage 1 of staged reconfiguration of a lot (1 into 36) & new road Preliminary Approval over- riding a Planning Scheme from Rural to Residential (S242) for all stages	50081 Bruce Highway, CALLIOPE QLD 4680	20/7/2012
DA/680/2012	Multiple Unit Residential (3 units)	260 Auckland Street, SOUTH GLADSTONE QLD 4680	25/7/2012
DA/681/2012	Local Surgery (Dentist)	85 Sun Valley Road, SUN VALLEY QLD 4680	31/7/2012
DA/682/2012	Commercial Premises (Business)	35-37 Gladstone-Benaraby Road, TOOLOOA QLD 4680	31/7/2012

**PLANNING - DELEGATED DECISIONS – July 2012**

<b>Application No.</b>	<b>Development</b>	<b>Location</b>	<b>Decision Date</b>
DA/643/2012	Home Occupation	8 Starfish Street AGNES WATER QLD 4677	5/7/2012
DA/488/2011	Multiple Use Residential (10 Units)	3 French Street SOUTH GLADSTONE QLD 4680	10/7/2012
DA/644/2012	Dual Occupancy	42 Grahame Colyer Drive AGNES WATER QLD 4677	19/7/2012
DA/611/2012	Relatives Apartment	407 Anderson Way AGNES WATER QLD 4677	30/7/2012
DA/617/2012	Multiple Unit Residential (5 Town houses)	62 Flinders Street WEST GLADSTONE QLD 4680	30/7/2012
DA/654/2012	Relatives Apartment	25 Luana Crescent BURUA QLD 4680	23/7/2012
DA/492/2011	Boundary Realignment (2 into 2)	7547 Dawson Highway & 6902 Dawson Highway MOUNT ALMA QLD 4680	23/7/2012
DA/551/2012	Reconfiguring a Lot (1 into 2)	12 Linville Court KIN KORA QLD 4680	10/7/2012
DA/629/2012	1 into 2	13 Gibbons Court AGNES WATER QLD 4677	10/7/2012
DA/603/2012	Product Loading Facility	Lot 1 SP 228184, Curtis Unnamed Road CURTIS ISLAND QLD 4680	24/7/2012
DA/634/2012	Area 15 Shore Protection Works	Lot 1 SP 235007, Unnamed Road, CURTIS ISLAND QLD 4680`	5/7/2012

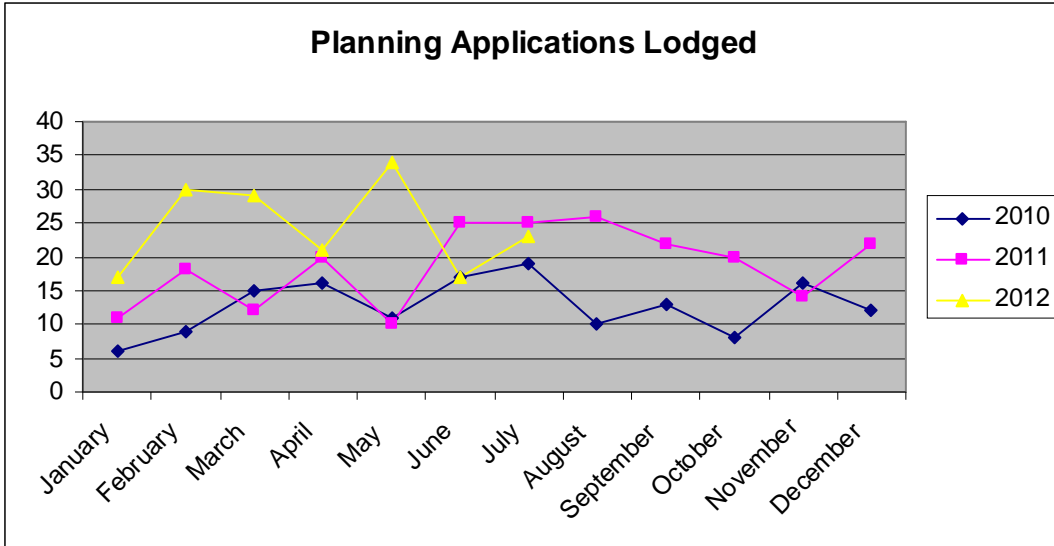
**PLANNING – COUNCIL DECISIONS – July 2012**

<b>Application No.</b>	<b>Development</b>	<b>Location</b>	<b>Decision Date</b>
DA/569/2012	Small Lot Housing & Reconfiguration of a Lot (1 into 2)	4 Dorado Court TELINA QLD 4680	3/7/2012
DA/554/2012	Multiple Unit Residential (3 Units)	6 Little Street SOUTH GLADSTONE QLD 4680	17/07/2012
DA/565/2012	Small Lot Housing & Reconfiguring a Lot (1 into 2) & Access Easement	49 Ann Street SOUTH GLADSTONE QLD 4680	17/7/2012
DA/574/2012	Multiple Unit Residential (24 Units)	20 - 22 Flinders Street WEST GLADSTONE QLD 4680	18/7/2012
DA/489/2011	Reconfiguring a Lot (1 into 2) and Material Change of Use (Small Lot Housing)	8 Cairncross Street SUN VALLEY QLD 4680	17/7/2012
DA/608/2012	Duplex Unit	29 Telopea Place KIRKWOOD QLD 4680	18/7/2012
DA/544/2012	Multiple Unit Residential (3 Units)	261 Auckland Street, SOUTH GLADSTONE QLD 4680	9/7/2012
DA/270/2011	Multiple Unit Residential (20 Units), Shops & Office	1 & 3 Pacific Avenue, TANNUM SANDS QLD 4680	3/7/2012
DA/573/2012	Material Change of Use - Small Lot Housing & Reconfiguring a Lot (1 into 2)	13 The Esplanade, BARNEY POINT QLD 4680	17/7/2012
DA/510/2012	Resort (Tourist Facility)	Lot 2 DS 214, Turtle Island GLADSTONE HARBOUR QLD 4680	18/7/2012

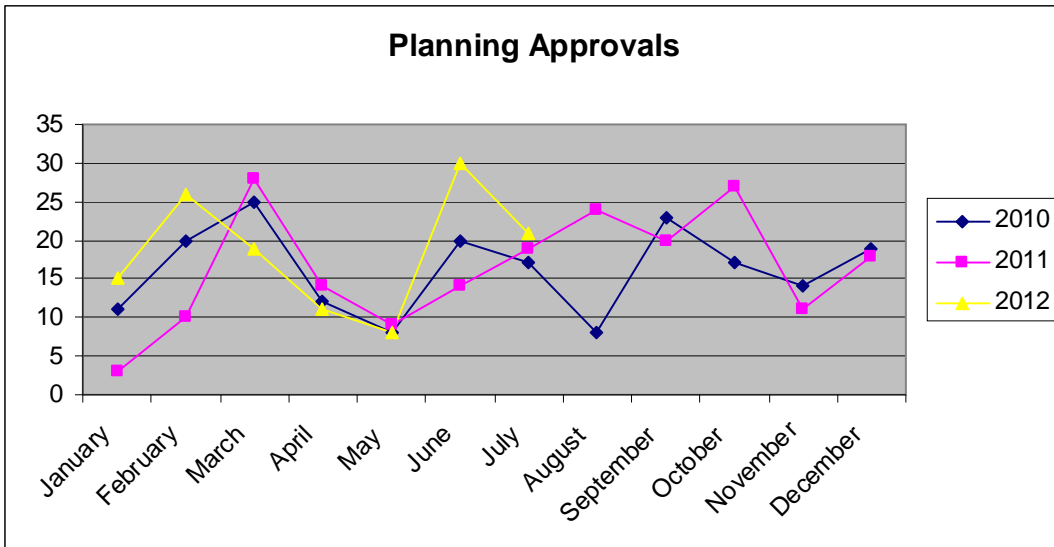
**PLANNING - NEGOTIATED DECISIONS – July 2012**

<b>Application No.</b>	<b>Development</b>	<b>Location</b>	<b>Date Approved</b>
DA/485/2011	Extension to Storage Depot (58 additional Self Storage Units)	4 Shaw Street NEW AUCKLAND QLD 4680	24/7/2012
DA/445/2011	Multiple Unit Residential (6 Units)	27 Roberts Street SOUTH GLADSTONE QLD 4680	30/7/2012
DA/402/2011	Stage 7 Residential Subdivision & Reconfiguring a Lot (1 into 46, Plus 1- Park Lot & Balance Lot)	Lot 508 SP 247064, Kirkwood Road NEW AUCKLAND QLD 4680	3/7/2012

**PLANNING APPLICATIONS LODGED 2010-2012**



**PLANNING APPLICATION APPROVALS 2010-2012**



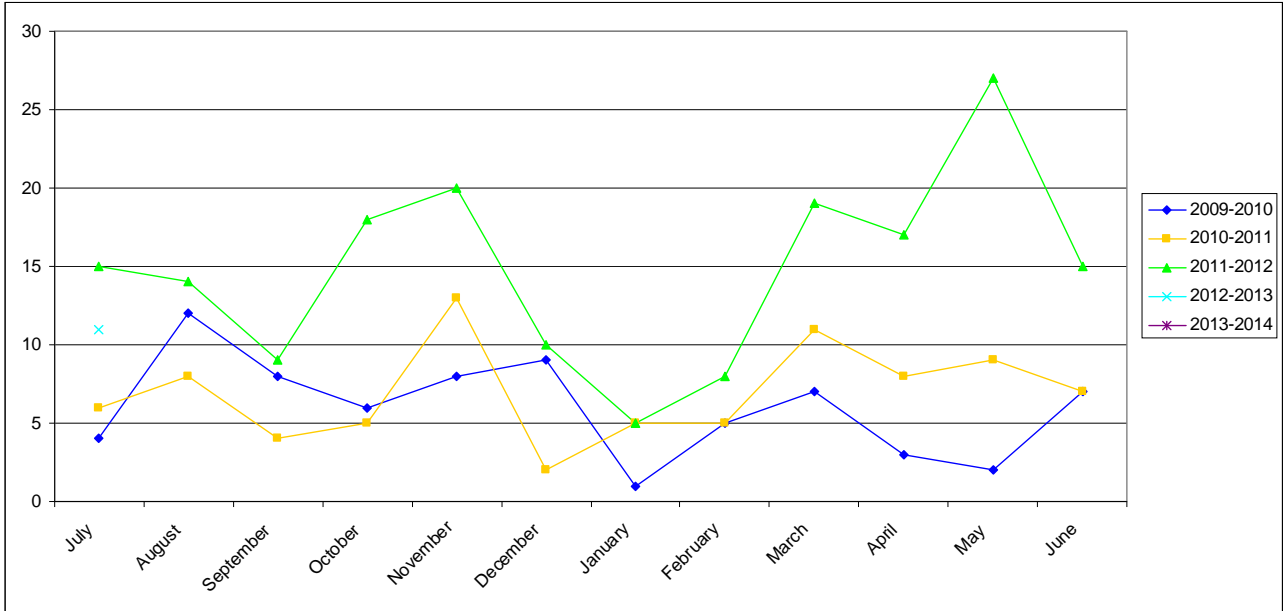
**OPERATIONAL WORKS - NEW APPLICATIONS LODGED - July 2012**

<b>Application No.</b>	<b>Development</b>	<b>Location</b>	<b>Date Lodged</b>
OPW/335/2012	Stormwater	Lot 16 DS 277, Mattson Road, DARTS CREEK QLD 4695	4/7/2012
OPW/336/2012	Roadworks, stormwater, water infrastructure, drainage works, earthworks, sewerage infrastructure & signage	Lot 101 RP 836843, Tarrawonga Drive, CALLIOPE QLD 4680	4/7/2012
OPW/337/2012	Landscaping	Lot 101 RP 836843, Tarrawonga Drive, CALLIOPE QLD 4680	4/7/2012
OPW/338/2012	Stormwater, drainage, earthworks & clearing vegetation under the planning scheme.	79 Goonoon Street, GLADSTONE QLD 4680	4/7/2012
OPW/339/2012	Water Infrastructure, Drainage Works and Sewerage Infrastructure	5 O'Malley Street, WEST GLADSTONE QLD 4680	17/07/2012
OPW/340/2012	Landscaping	Lot 901 SP 221484, Little Creek Boulevard, KIRKWOOD QLD 4680	20/7/2012
OPW/341/2012	Road Works, Stormwater, Water Infrastructure, Drainage Works, Earthworks and Sewerage Infrastructure	9 Wuruma Court, CLINTON QLD 4680	24/7/2012
OPW/342/2012	Stormwater & Earthworks	2A Dalrymple Drive, TOOLOOA QLD 4680	25/7/2012
OPW/343/2012	Stormwater, Earthworks and Landscaping.	3 Boowan Court, CALLEMONDAH QLD 4680	25/7/2012
OPW/344/2012	Street Lighting	Lot 900 SP 246026, Harvey Road, CLINTON QLD 4680	25/7/2012
OPW/345/2012	Roadworks (Driveway), Stormwater, Drainage Works, Earthworks and Landscaping	23 Roberts Street, SOUTH GLADSTONE QLD	31/7/2012

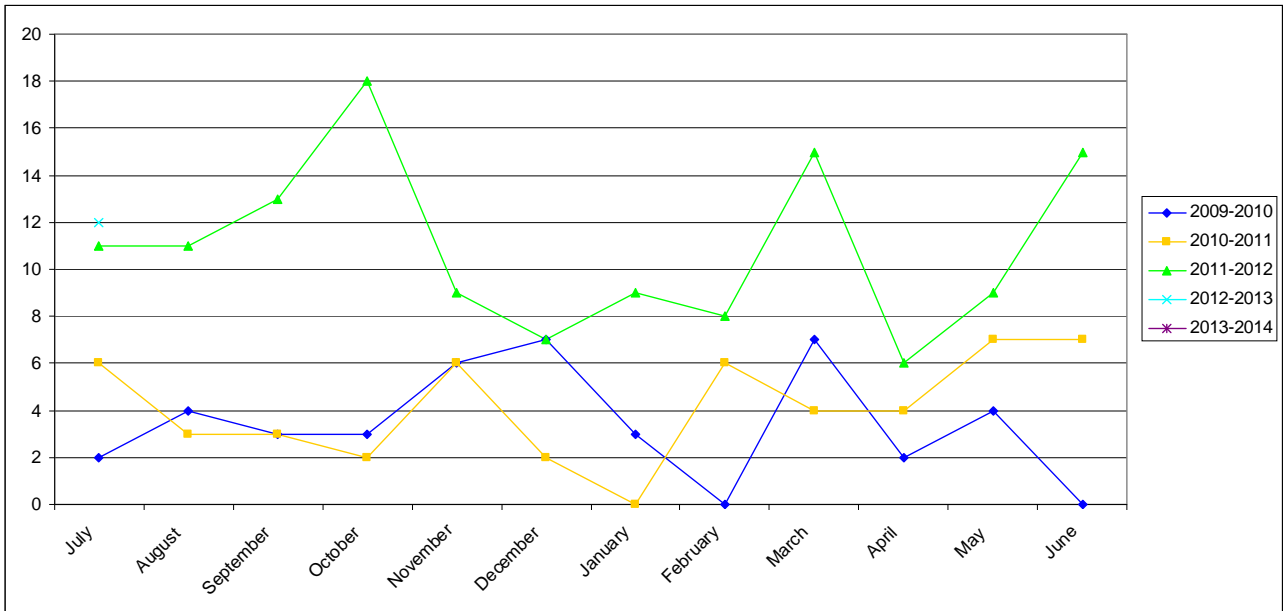
**OPERATIONAL WORKS - DELEGATED DECISIONS - July 2012**

<b>Application No.</b>	<b>Development</b>	<b>Location</b>	<b>Decision Date</b>
OPW/201/2011	Roadworks (Driveway), Earthworks and Stormwater	3 Gidgee Court KIN KORA QLD 4680	24/7/2012
OPW/285/2012	Landscaping	60 Findling Road BOYNE ISLAND QLD 4680	20/7/2012
OPW/240/2011	Landscaping	60 Findling Road BOYNE ISLAND QLD 4680	19/7/2012
OPW/284/2012	Sewerage Infrastructure	104 - 106 Central Lane GLADSTONE QLD 4680	30/7/2012
OPW/268/2012	Earthworks	Lot 130 SP 228535, Trudy Avenue CALLIOPE QLD 4680	9/7/2012
OPW/292/2012	Stormwater, Earthworks & Landscaping	2 Boowan Court CALLEMONTAH QLD 4680	16/7/2012
OPW/294/2012	Landscaping	104 - 106 Central Lane GLADSTONE QLD 4680	19/7/2012
OPW/322/2012	Road Works, Stormwater, Earthworks, Sewerage Infrastructure and Landscaping	10-12 Flinders Street & 40-42 Kent Street WEST GLADSTONE QLD 4680	11/7/2012
OPW/295/2012	Landscaping	64 Glenlyon Street GLADSTONE QLD 4680	2/7/2012
OPW/297/2012	Sewerage Infrastructure and Other	1 Nothling Street NEW AUCKLAND QLD 4680	9/7/2012
OPW/319/2012	Water Infrastructure, Sewerage Infrastructure and Driveway	16 Waterfront Drive AGNES WATER QLD 4677	23/7/2012
OPW/304/2012	Landscaping	Lot 508 SP 247064, Kirkwood Road NEW AUCKLAND QLD 4680	16/7/2012

**OPERATIONAL WORKS LODGEMENT 2009-2012**



**OPERATIONAL DECISIONS 2009-2012**

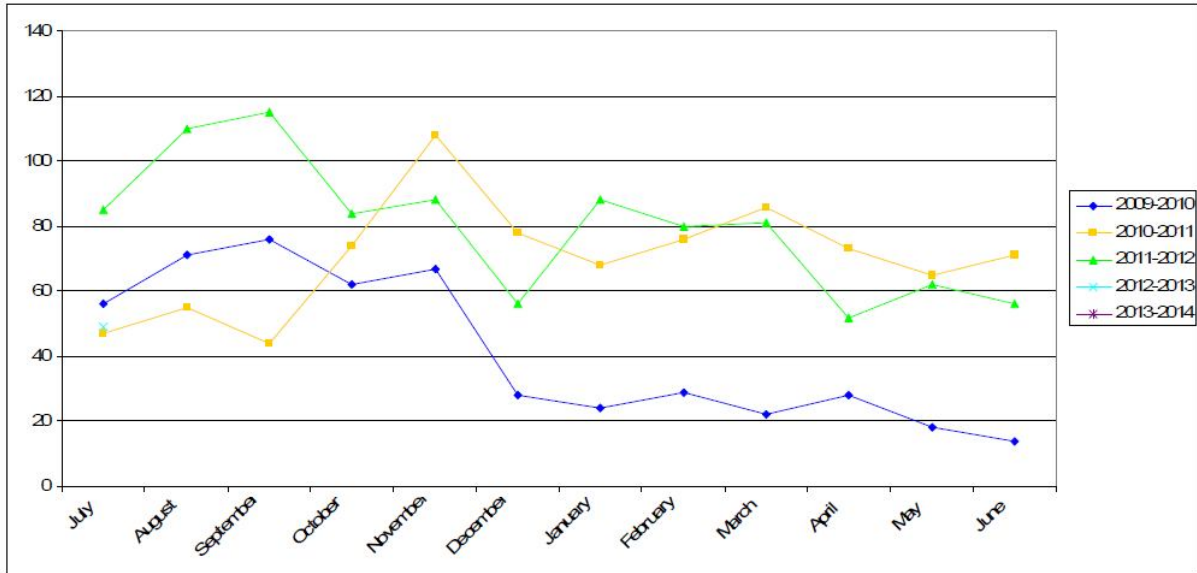




## BUILDING SECTION STATISTICS

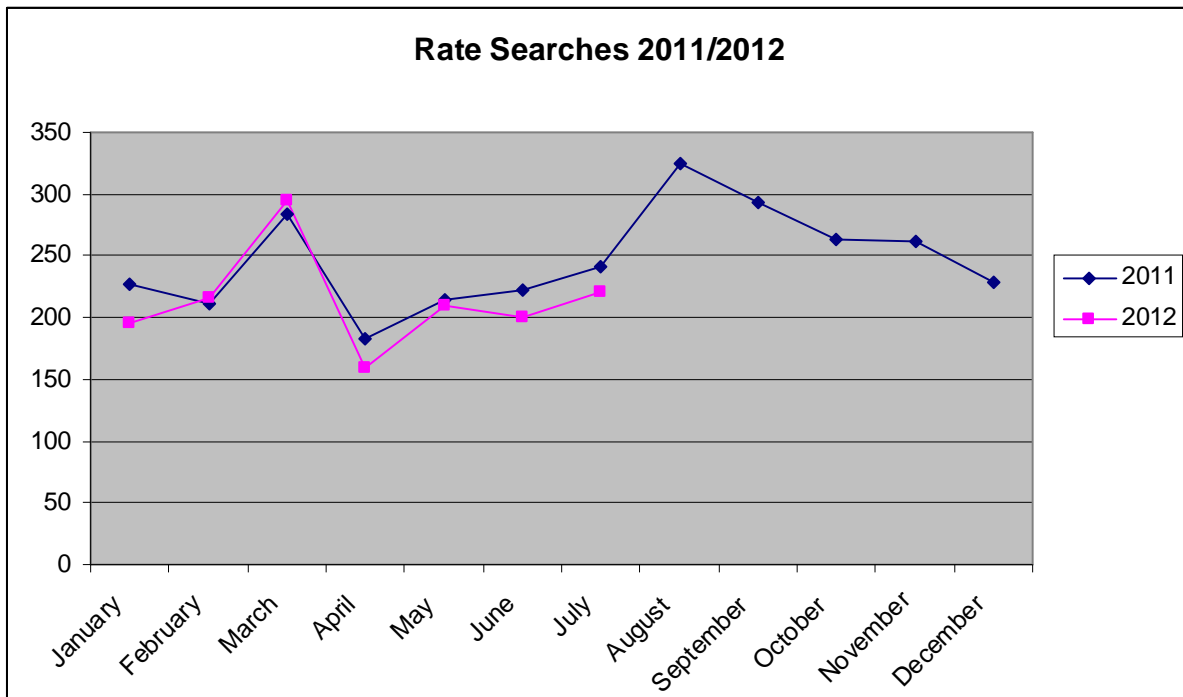
### *BUILDING SEARCHES CONDUCTED 2009-2012*

TOTAL BUILDING SEARCHES

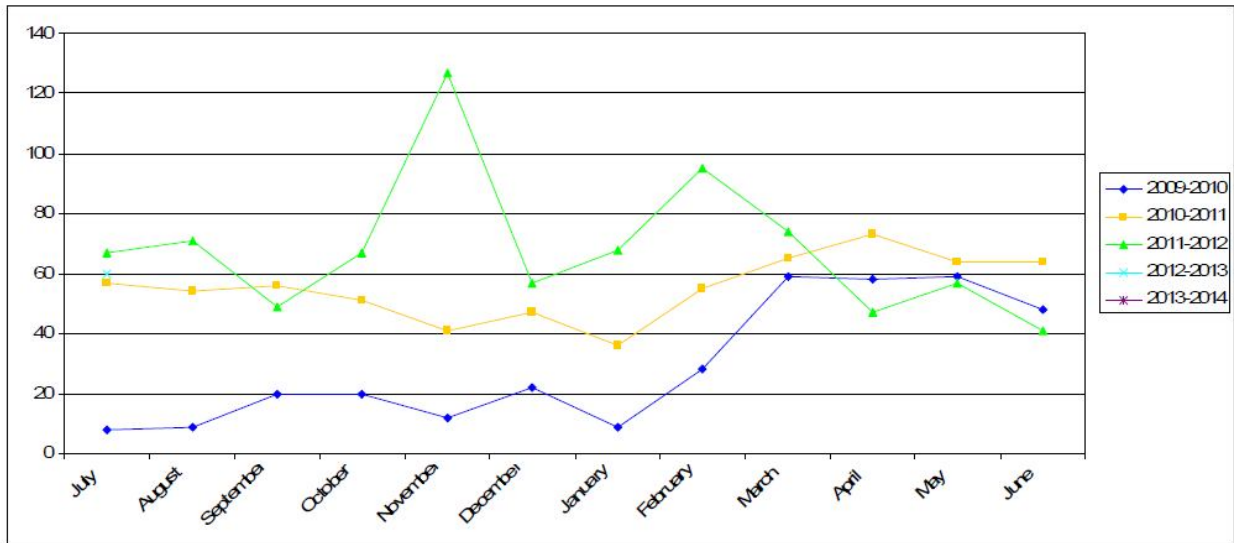


### *RATES SEARCHES 2011/2012*

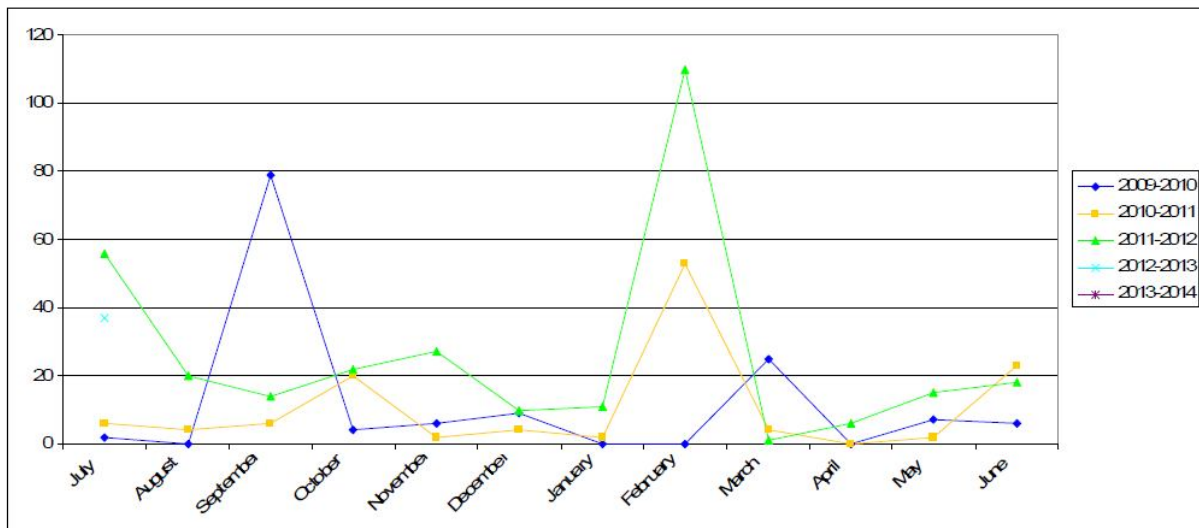
Rate Searches 2011/2012



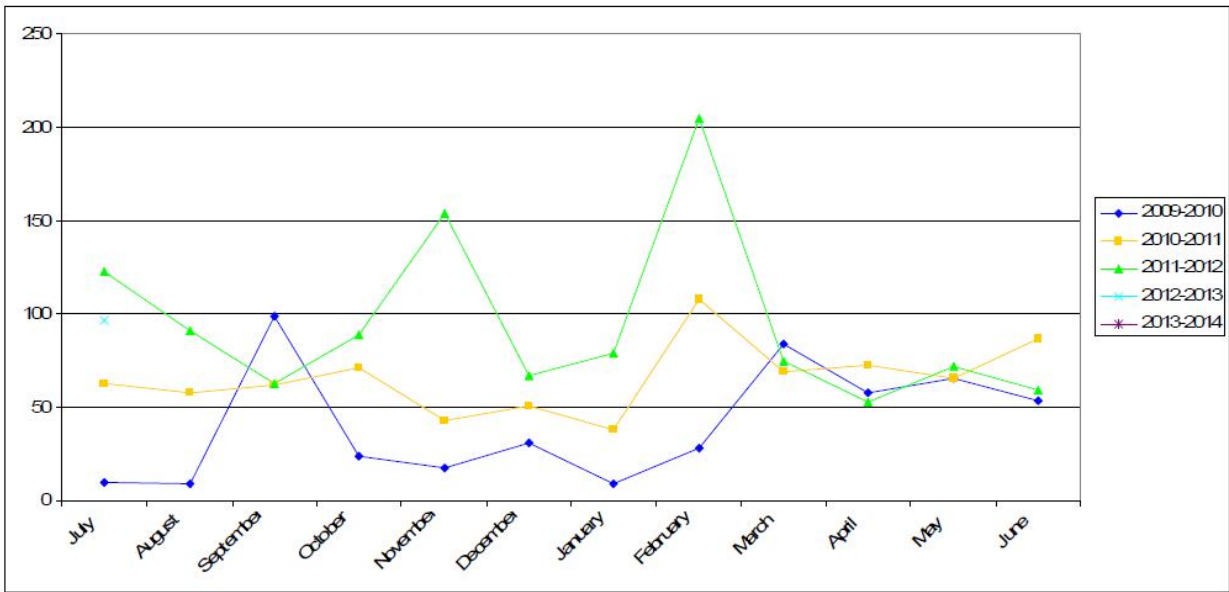
### TOTAL DWELLING APPROVALS



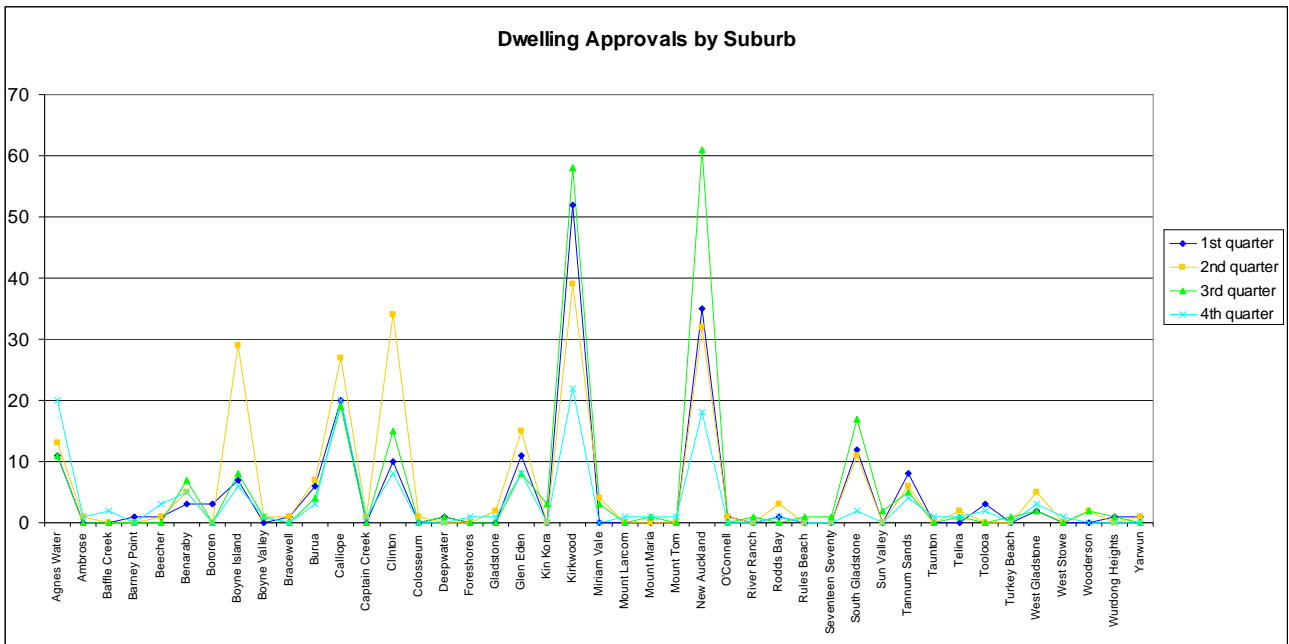
### TOTAL UNIT/DUPLEX APPROVALS (NO. OF UNITS)



### TOTAL HOUSING UNIT APPROVALS (DWELLING, DUPLEX, UNITS)



### Dwelling Approvals by Suburb



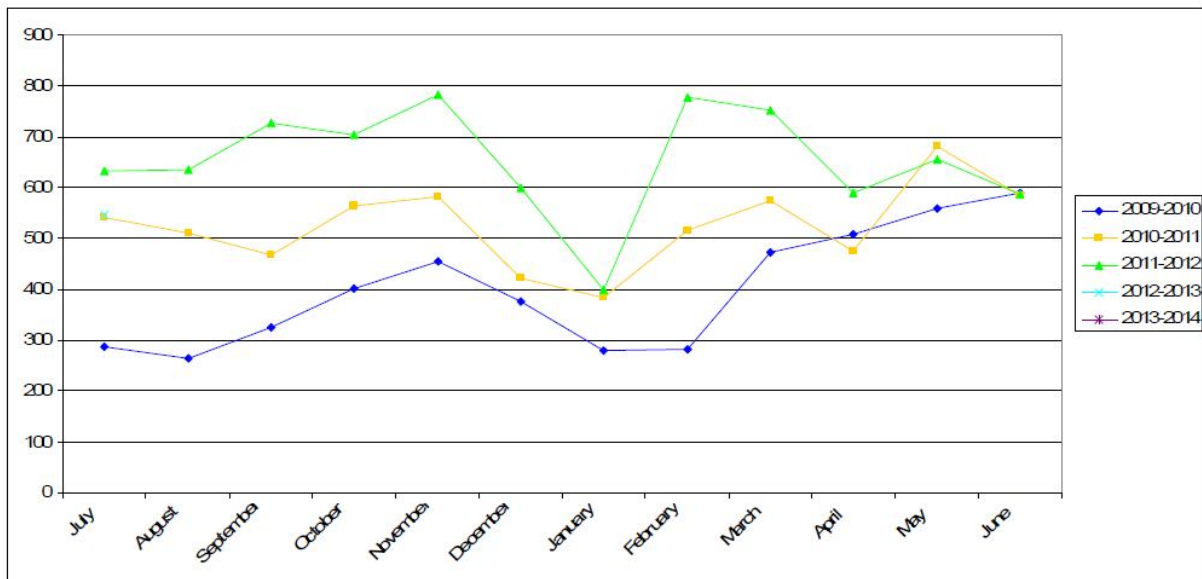
**BUILDING & PLUMBING – POOL SAFETY CERTIFICATES ISSUED**

POOL SAFETY CERTIFICATES ISSUED



**BUILDING & PLUMBING – BUILDING & PLUMBING INSPECTIONS**

INSPECTIONS CONDUCTED BY BUILDING & PLUMBING OFFICERS



Jodie Clow  
 Technical Officer - Planning  
 1 August 2012