



## Development Services

**Subject: DEVELOPMENT STATISTICS – JANUARY 2012**

**File Reference: DB10.2**

The information below is provided to Councillors for the month of December 2011 in the following areas:-

- New planning applications lodged
- Delegated planning approvals
- Council planning approvals
- Graph Showing Planning Lodgements & Approvals
- New operational works applications lodged
- Delegated Operational works approvals
- Graph Showing Operational Works Lodgements & Approvals
- Graph showing Building Searches completed for 2011/2012
- Graph showing Rate Searches completed 2010/2011/2012
- Graph showing New Dwelling Approval Comparison for 2010/2011/2012
- Graph showing New Dwelling Approvals broken down into LG area.
- Graph showing Pool Safety Certificates Issued

### **PLANNING - NEW APPLICATIONS LODGED – JANUARY 2012**

<b>Application No.</b>	<b>Development</b>	<b>Location</b>	<b>Date Lodged</b>
DA/500/2012	Multiple Unit Residential (31 Units)	Lot 951 SP 246150, Kirkwood Road KIRKWOOD QLD 4680	3/1/2012
DA/502/2012	Vehicle and Machinery Sales and Hire (Industry (Low Impact))	40 Callemondah Drive CLINTON QLD 4680	5/1/2012
DA/503/2012	Local Industry (Low Impact)	10 Dennis Street BOYNE ISLAND QLD 4680	19/1/2012
DA/504/2012	Multiple Unit Residential (14 Townhouses)	2041 Dawson Highway CALLIOPE QLD 4680	12/1/2012
DA/505/2012	Shopping Centre	2 Sidey Close GLEN EDEN QLD 4680	13/1/2012
DA/506/2012	Reconfiguring a Lot (1 into 4)	25 Jeana Close BOYNE ISLAND QLD 4680	19/1/2012
DA/507/2012	Small Lot Housing & Reconfiguring a Lot (1 into 2)	16 Leichhardt Court GLEN EDEN QLD 4680	19/1/2012
DA/508/2012	Duplex	39 Cairncross Street SUN VALLEY QLD 4680	19/1/2012
DA/509/2012	Preliminary Approval - Change in	90 Boles Street	19/1/2012

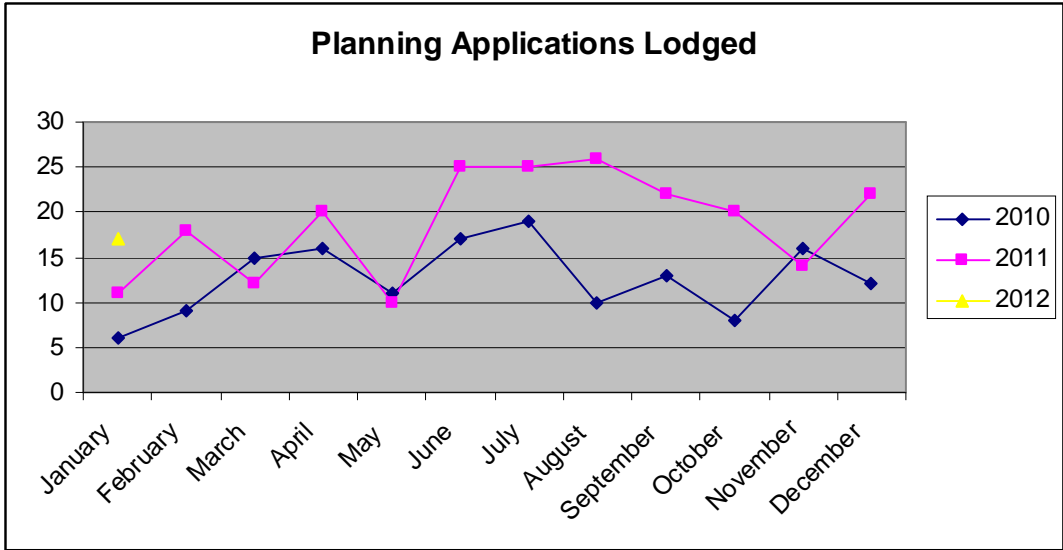
	Zone from Community Purpose to Residential & Development Permit for Residential Subdivision Reconfiguring a Lot (1 into 23)	WEST GLADSTONE QLD 4680	
DA/510/2012	Tourist Attraction (Tourist Facility)	Lot 2 DS 214, Turtle Island GLADSTONE HARBOUR QLD 4680	20/1/2012
DA/511/2012	Tourist Facility (3 Bedroom bed & Breakfast)	9 Cobalt Crescent TANNUM SANDS QLD 4680	23/1/2012
DA/512/2012	(1 into 2) & access easement	Lot 901 SP 235957, Parksville Drive NEW AUCKLAND QLD 4680	23/1/2012
DA/514/2012	Workers Accommodation	76 Adelaide Street SOUTH GLADSTONE QLD 4680	25/1/2012
DA/515/2012	Boundary Realignment	6 Marine Avenue TANNUM SANDS QLD 4680	30/1/2012
DA/516/2012	Small Lot Housing & Reconfiguring a Lot (1 into 2)	36 Pershouse Street BARNEY POINT QLD 4680	31/1/2012
DA/517/2012	Boundary Realignment	20 & 30 Zwisler Road & 84 Dalga Road BOYNE VALLEY QLD 4680	31/1/2012
DA/518/2012	Veterinary Surgery	15 Drynan Drive CALLIOPE QLD 4680	31/1/2012

#### **PLANNING - DELEGATED DECISIONS – JANUARY 2012**

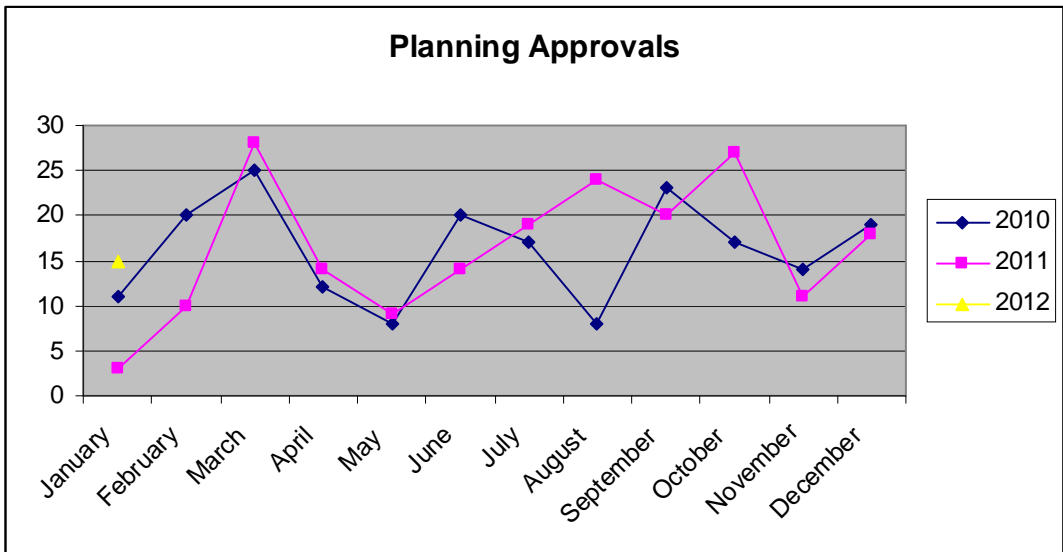
<b>Application No.</b>	<b>Development</b>	<b>Location</b>	<b>Decision Date</b>
DA/361/2011	Storage Facility (Bus Depot) & Caretakers Residence	23 Corfield Drive, AGNES WATER QLD 4677	3/01/2012
DA/449/2011	Boundary Relaxation - Shed on Vacant Land (Low Density Residential Zone)	7 Solander Close, AGNES WATER QLD 4677	4/01/2012
DA/424/2011	Prescribed Tidal Works - Material Offloading Facility and Reclamation	Lot 3 SP 228454, Unnamed Road, CURTIS ISLAND QLD 4680	12/1/2012
DA/434/2011	Multiple Unit Residential (5 Additional Units)	6 Wyndham Avenue, BOYNE ISLAND QLD 4680	18/1/2012
DA/440/2011	Boundary Realignment (2 into 2)	216 Goondoon St & 151 Oaka Lane, GLADSTONE QLD 4680	31/1/2012

#### **PLANNING - COUNCIL DECISION – JANUARY 2012**

<b>Application No.</b>	<b>Development</b>	<b>Location</b>	<b>Decision Date</b>
DA/399/2011	Major Infrastructure (Powdered Activated Carbon Plant)	Lot 1 RP 612775, Fitzsimmons Street SOUTH GLADSTONE QLD 4680	17/1/2012
DA/389/2011	Duplex	26 Beaver Avenue SOUTH GLADSTONE QLD 4680	17/1/2012
DA/387/2011	Industrial Subdivision (1 into 10)	47 Bensted Road CALLEMONDAH QLD 4680	17/1/2012
DA/388/2011	Multiple Unit Residential (43 Units) and existing dwelling	1 Collins Lane KIN KORA QLD 4680	17/1/2012
DA/385/2011	Multiple Unit Residential (38 Units)	2 Beezley Street GLEN EDEN QLD 4680	17/1/2012
DA/419/2011	Multiple Unit Residential (5 Units)	5 Ormonde Street WEST GLADSTONE QLD 4680	17/1/2012
DA/241/2010	Workers Accommodation - 3000 Rooms (Development Permit for Stages 1 to 3 & Preliminary Approval for Stages 4 to 10)	149 Stowe Road CALLIOPE QLD 4680	17/1/2012
DA/401/2011	Workers Accommodation Staged (166 Units - 498 Persons) & Environmentally Relevant Activity 63 Sewerage Treatment	Lot 102 RP 802833, Hooke Road, CALLIOPE QLD 4680	17/1/2012
DA/20395/2008	MCU & Reconfiguring a Lot - The Ridge on Calliope - Mobile Home Park	2120 Dawson Highway, CALLIOPE QLD 4680	17/1/2012
DA/20455/2008	Reconfiguring a lot - 1 into 2 and new Road Reserve	2120 Dawson Highway, CALLIOPE QLD 4680	17/1/2012



**PLANNING APPLICATION APPROVALS 2010-2012**



**OPERATIONAL WORKS - NEW APPLICATIONS LODGED - DECEMBER 2011**

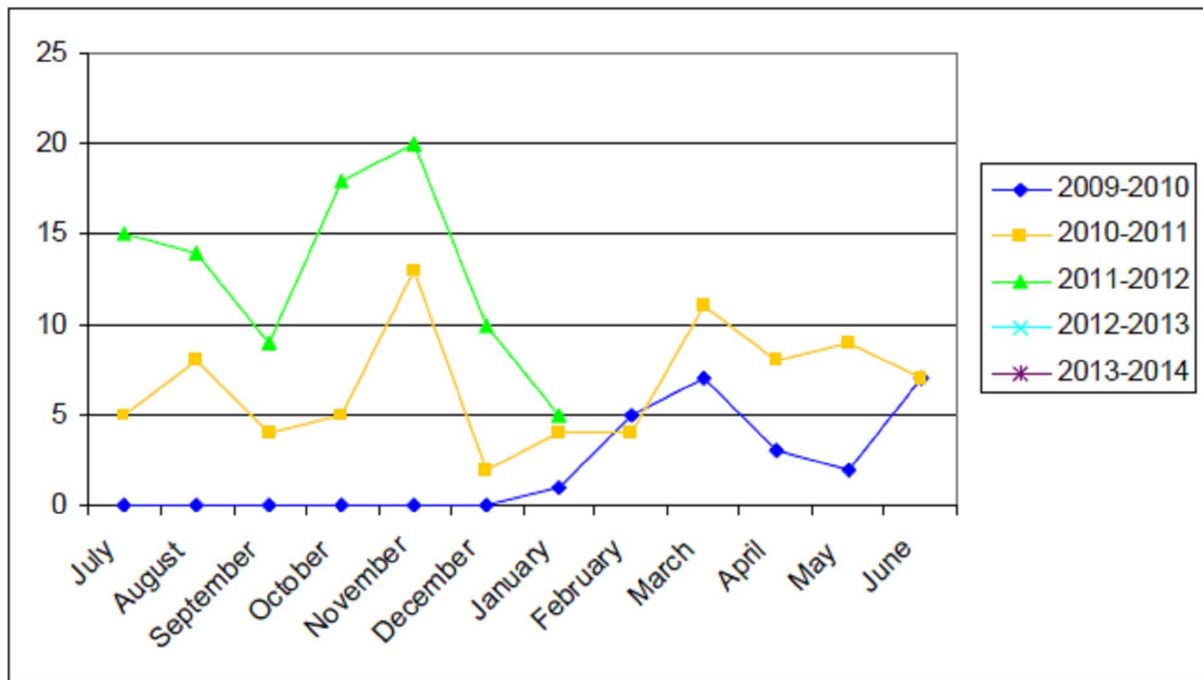
Application No.	Development	Location	Date Lodged
-----------------	-------------	----------	-------------

OPW/244/2012	Stormwater & Drainage Works	101 Calliope River Road WEST STOWE QLD 4680	13/1/2012
OPW/245/2012	Roadworks, Stormwater, Earthworks, Water & Sewerage Infrastructure	11 Dartmouth Close CLINTON QLD 4680	18/1/2012
OPW/246/2012	Roadworks, Stormwater, Water Infrastructure, Earthworks, Sewerage Infrastructure & Landscaping	5 Cressbrook Street CLINTON QLD 4680	20/1/2012
OPW/247/2012	Roadworks, Stormwater, Water Infrastructure, Earthworks, Sewerage Infrastructure	42 Cania Way CLINTON QLD 4680	20/1/2012
OPW/243/2012	Asphalt seal existing surface	40 Callemondah Drive CLINTON QLD 4680	9/1/2012

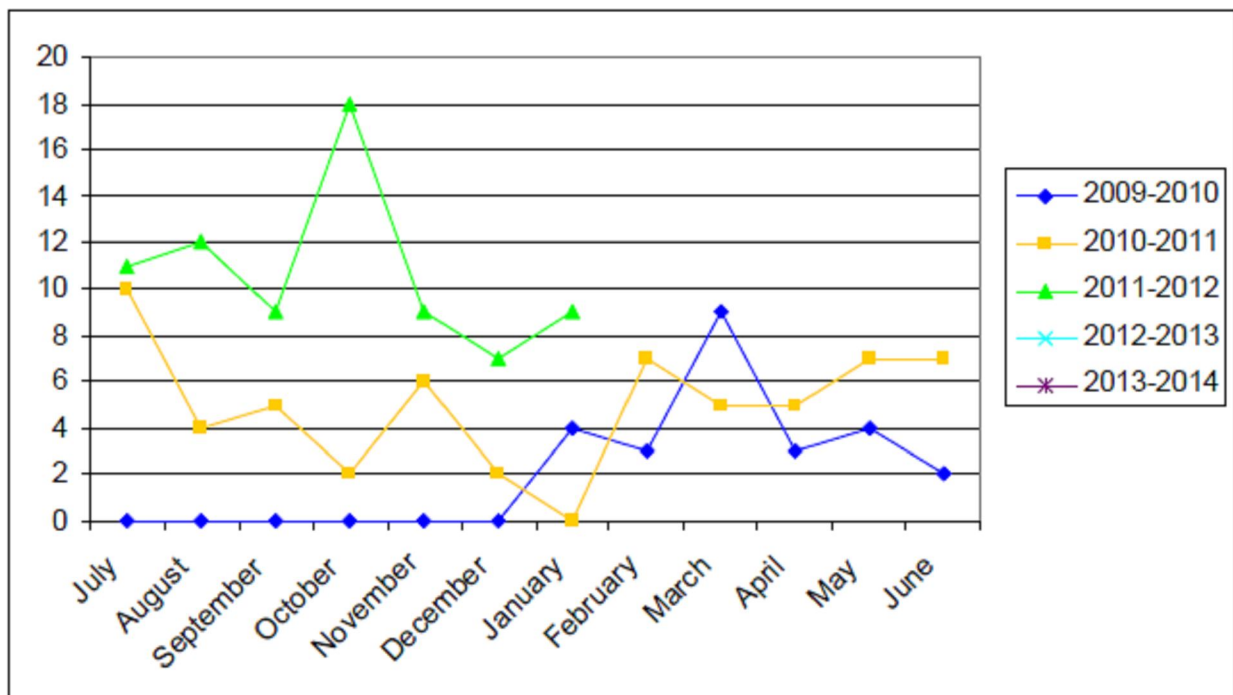
### **OPERATIONAL WORKS - DELEGATED DECISIONS - DECEMBER 2011**

<b>Application No.</b>	<b>Development</b>	<b>Location</b>	<b>Decision Date</b>
OPW/215/2011	Stormwater, Drainage Works, Earthworks, Landscaping, Signage, Water & Sewerage Infrastructure	Lot 901 SP 235957, Parksville Drive NEW AUCKLAND QLD 4680	4/1/2012
OPW/191/2011	Roadworks, Stormwater, Drainage Works, Earthworks, Signage, Water Infrastructure, Sewerage Infrastructure, Erosion & Sediment Control	31-37 Glenlyon Street GLADSTONE QLD 4680	10/1/2012
OPW/234/2011	Landscaping	Lot 951 SP 246150, Kirkwood Road KIRKWOOD QLD 4680	25/1/2012
OPW/235/2011	Landscaping	Lot 951 SP 246150, Kirkwood Road KIRKWOOD QLD 4680	25/1/2012
OPW/236/2011	Landscaping	Lot 951 SP 246150, Kirkwood Road KIRKWOOD QLD 4680	25/1/2012
OPW/237/2011	Landscaping	Lot 951 SP 246150, Kirkwood Road KIRKWOOD QLD 4680	25/1/2012
OPW/184/2011	Stormwater & Earthworks	72 Ann Street SOUTH GLADSTONE QLD 4680	19/1/2012
OPW/189/2011	Roadworks, Stormwater, Drainage Works, Earthworks, Landscaping, Signage, Clearing Vegetation, Water & Sewerage Infrastructure	Lot 900 SP 190798, Glen Eden Drive GLEN EDEN QLD 4680	11/1/2012
OPW/212/2011	Landscaping	31-37 Glenlyon Street GLADSTONE QLD 4680	18/1/2012

### OPERATIONAL WORKS LODGEMENTS

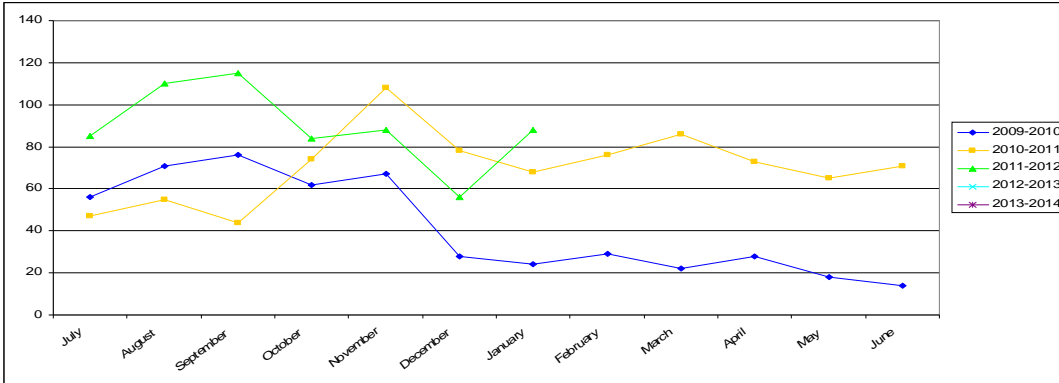


### OPERATIONAL WORKS DECISIONS

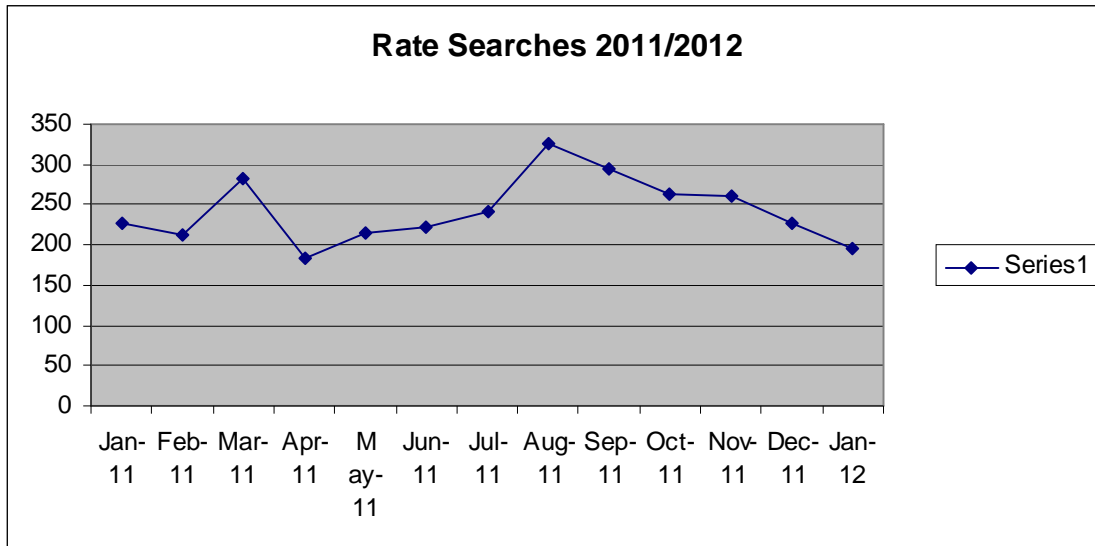


## BUILDING SECTION STATISTICS

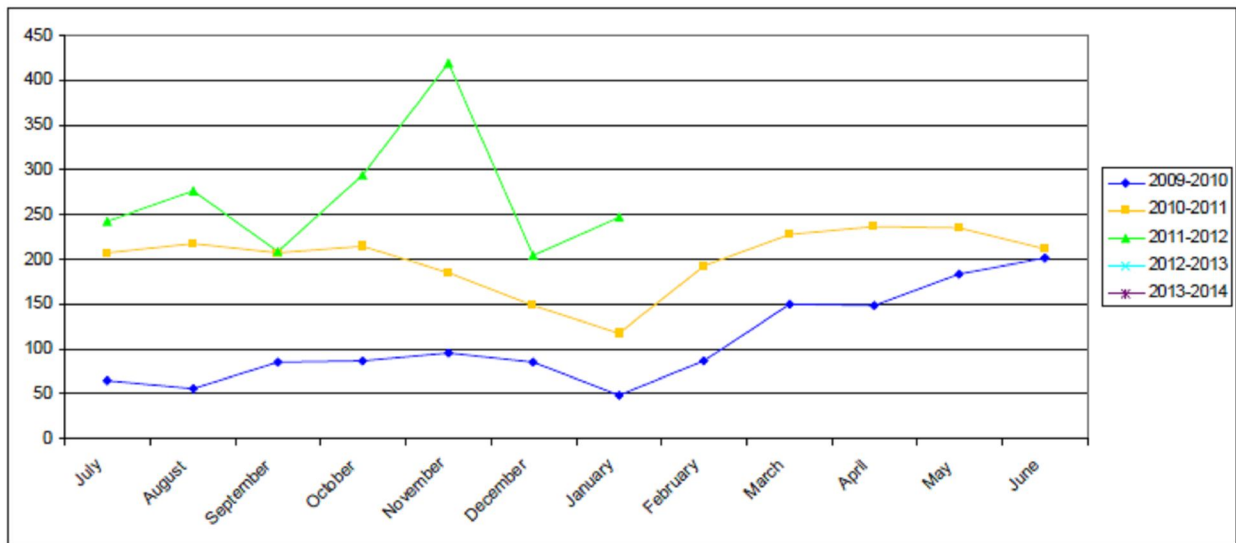
### BUILDING SEARCHES CONDUCTED



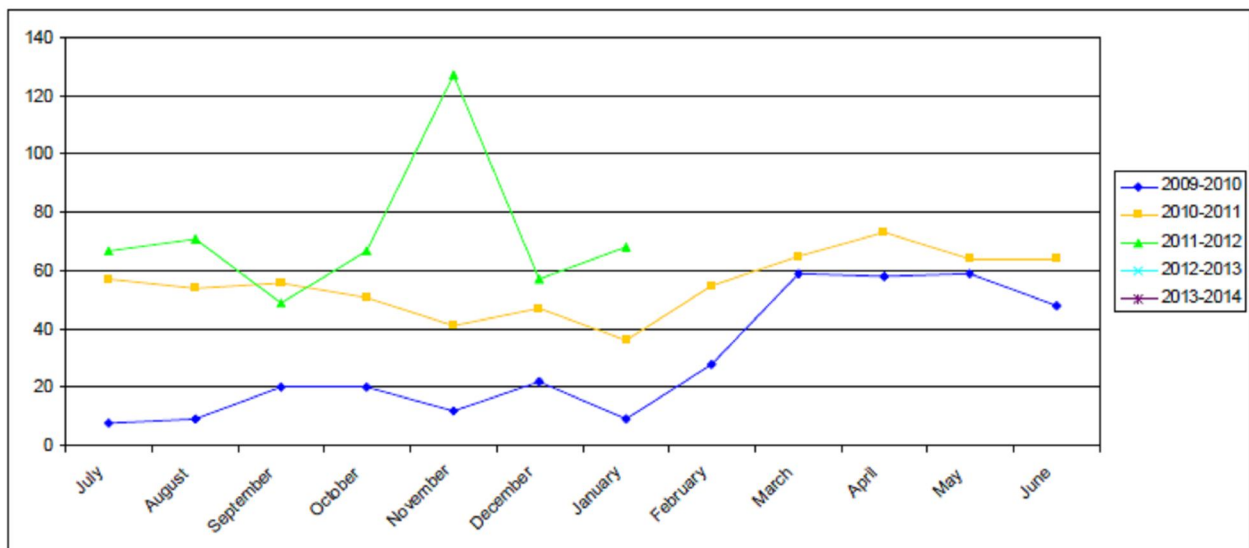
### RATES SEARCHES 2011/2012



### TOTAL BUILDING & PLUMBING APPROVALS

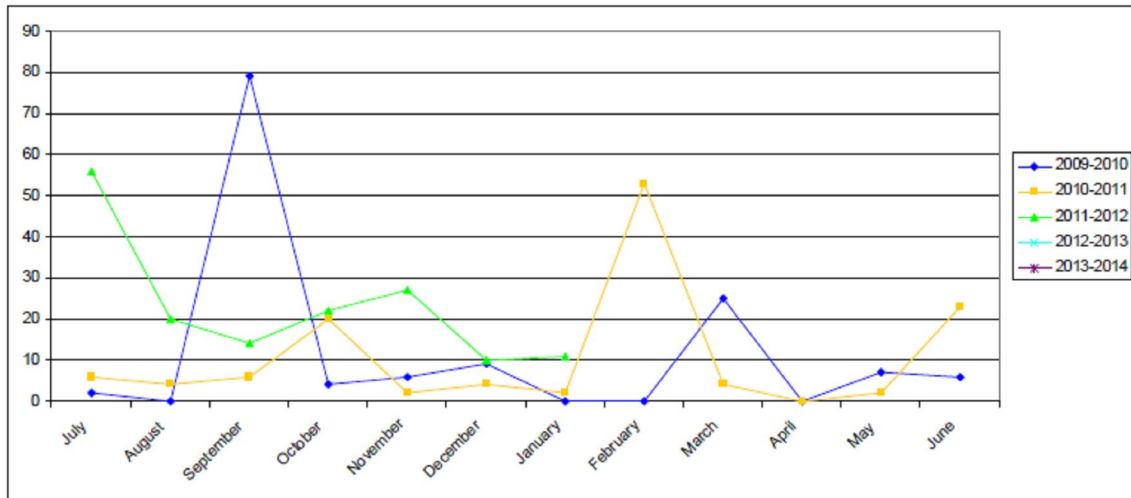


### TOTAL DWELLING APPROVALS



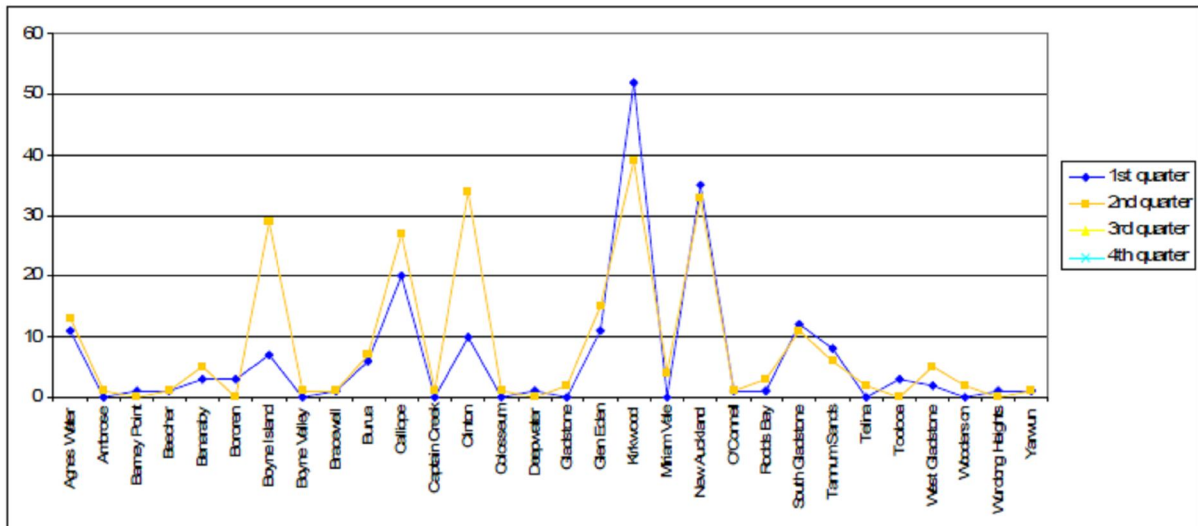


**TOTAL UNIT/DUPLEX APPROVALS (NO. OF UNITS)**

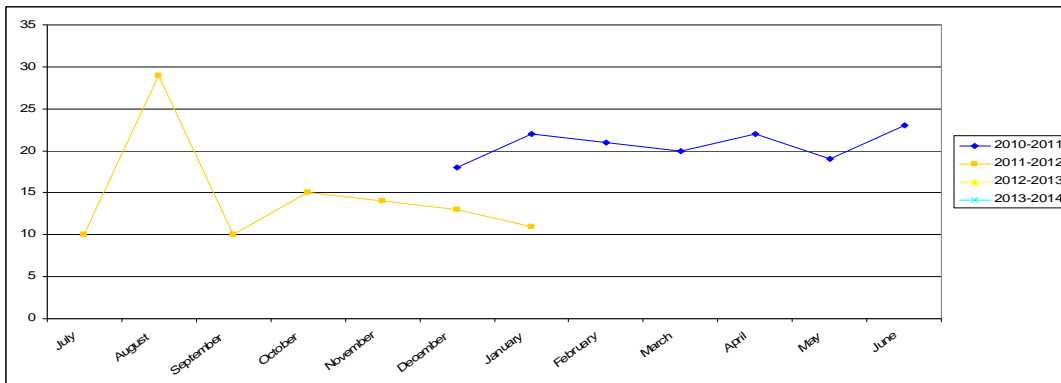


**DWELLING APPROVALS BY SUBURB**

Year to Date = 436



**BUILDING & PLUMBING – POOL SAFETY CERTIFICATES ISSUED**



Jodie Clow  
PA – Manager Development Assessment  
6 February 2012